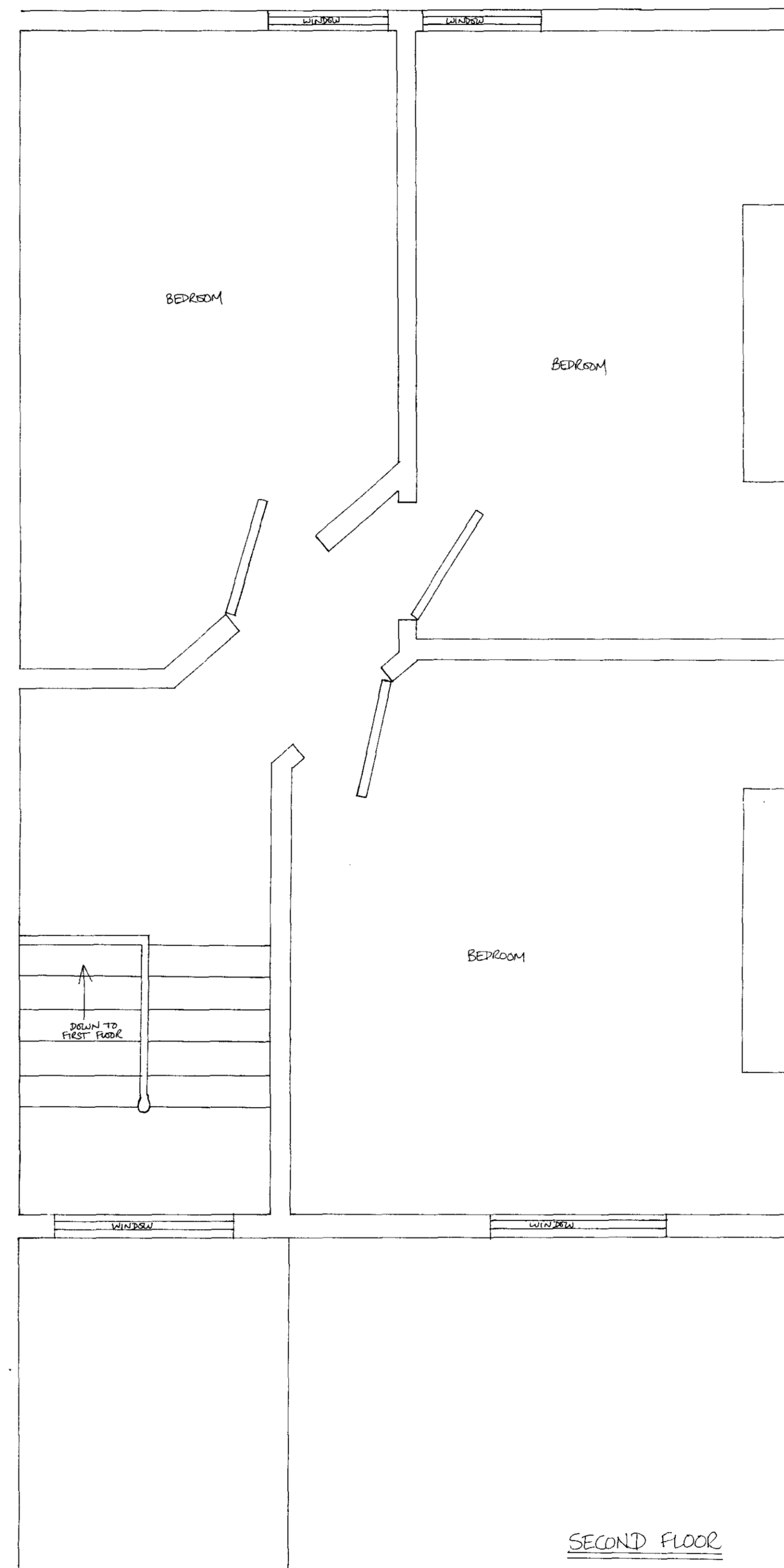


FIRST FLOOR

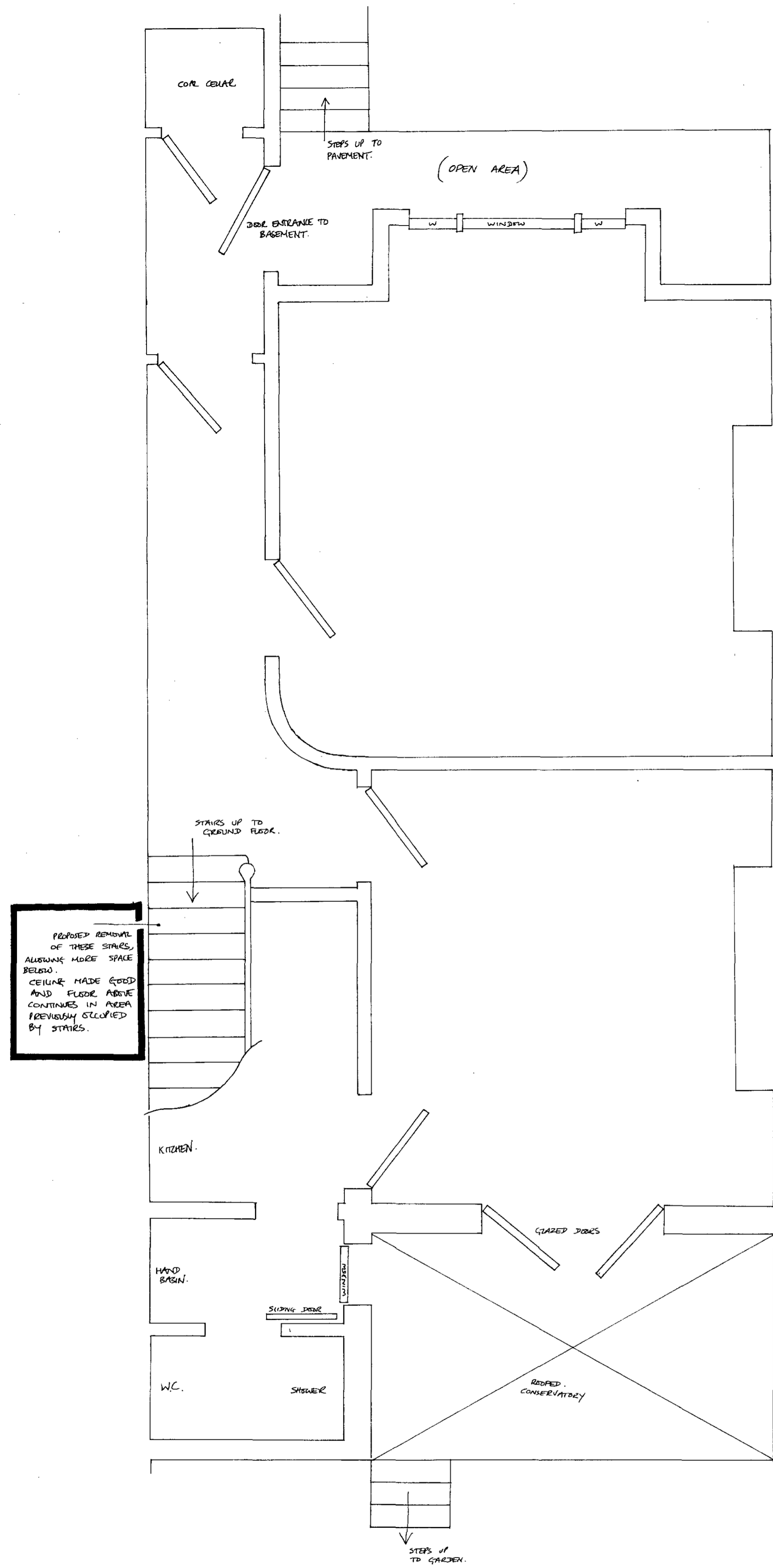


SECOND FLOOR

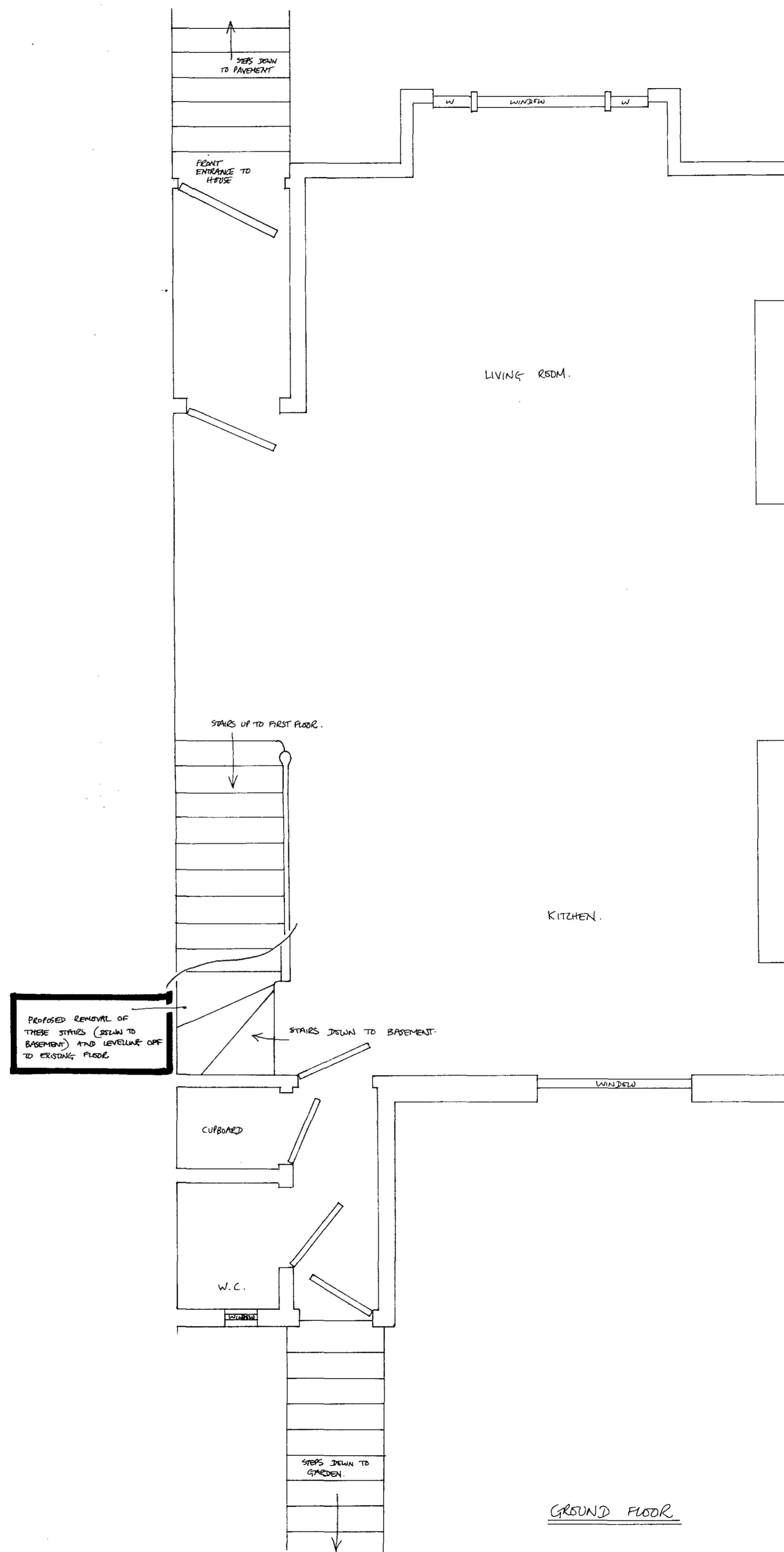
LONDON BOROUGH OF CAMDEN
TOWN AND COUNTRY PLANNING ACTS
29 APR 1987
APPROVED
PLANS NOT REVISED
ON BEHALF OF THE COUNCIL

17, GORDON HOUSE ROAD NWS	DRAWING / 2 NO 2 / DRAWINGS
SHOWING EXISTING FLOOR PLANS.	
DRAWN TO SCALE 1MM = 1 INCH / 26.3.1987	

A. John



BASEMENT LEVEL.



GROUND FLOOR

17, GORDON HOUSE ROAD. NWS.	DRAWING 1/2 No 1. PENNIES
SHOWING EXISTING FLOOR PLANS AND INDICATING STAIRCASE BETWEEN THE BASEMENT AND GROUND FLOORS	
DRAWN TO SCALE. 1/4" = 1" / 26.3.1987	

B. Summ.