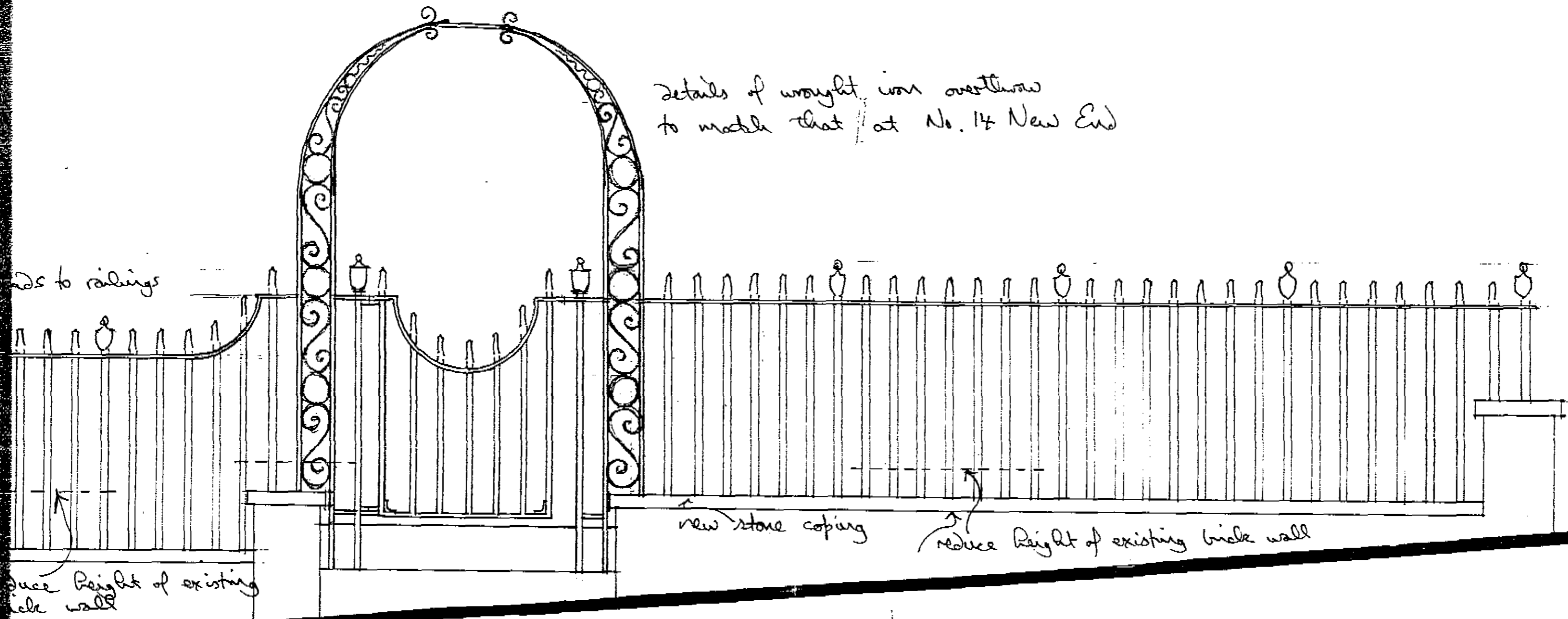
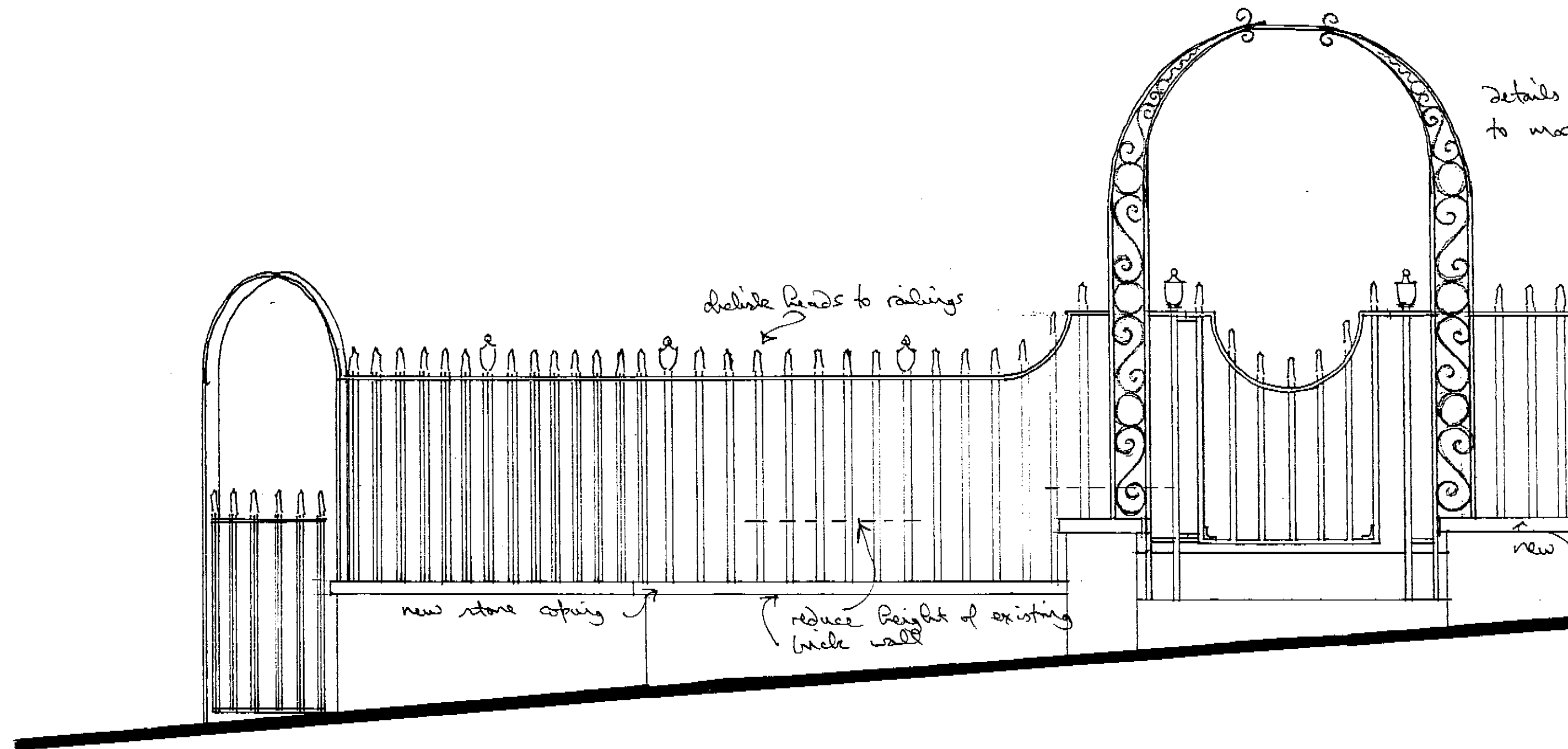


Details of wrought iron overthrow  
to match that at No. 14 New End



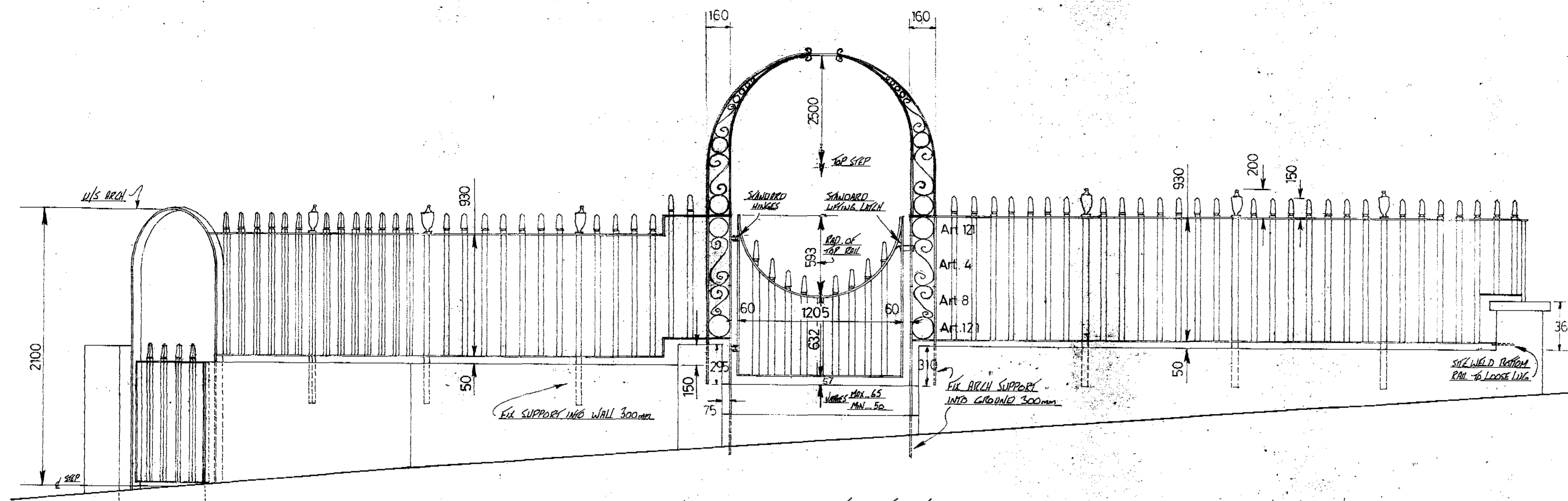
LONDON BOROUGH OF CAMDEN  
PLANNING AND TRANSPORT  
DEPARTMENT  
26 MAY 1989  
RECEIVED

No 18 New End Square  
revised elevation of proposed new railings  
4/5/1989 scale 1:20



LONDON COUNTY OF CINDEN  
PLANNING DEPARTMENT  
26 MAY 1989  
RECEIVED

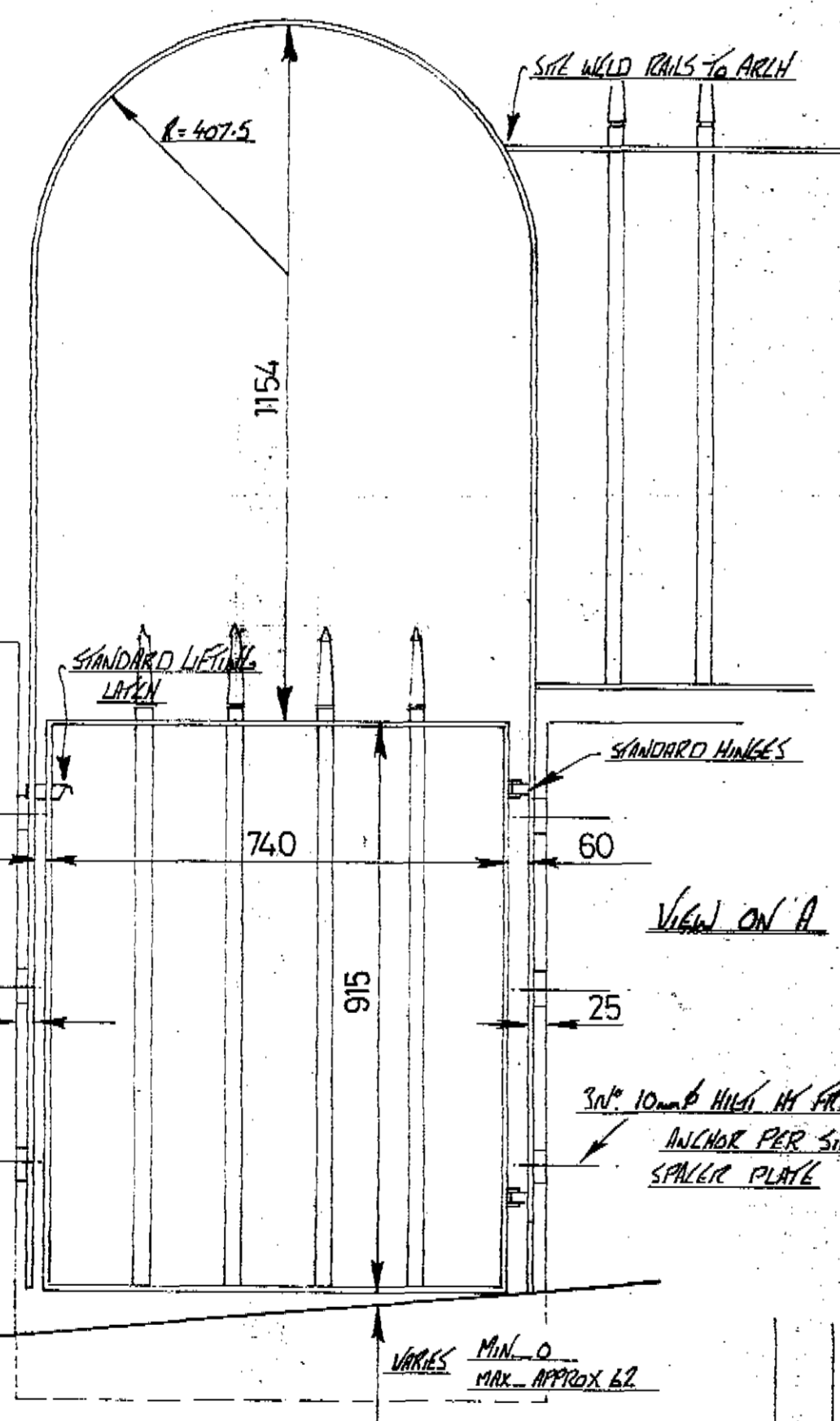
RECEIVED  
18 AUG 1983  
DEPARTMENT  
PLANNING AND TRANSPORT  
LONDON BOROUGH OF CAMDEN



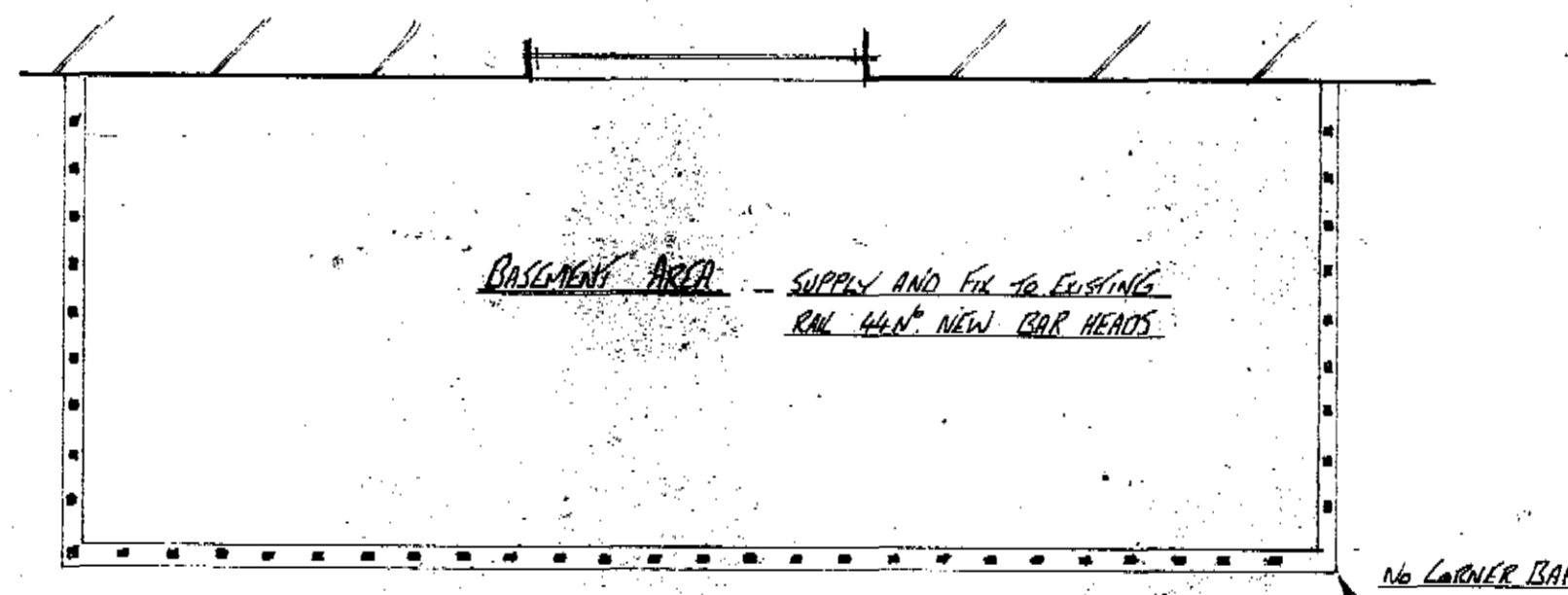
FRONT ELEVATION

SPECIFICATION

- OBELISK BAR HEADS TO 25mm SQ SOLID BARS
- HEAD REF. BEAD TO NEWEL POSTS
- 50x10mm FLAT TOP RAIL, ARCHES AND END STAYS
- 25mm SQ SOLID INFILL BARS AT 100mm CENTRES
- 30mm SQ SOLID NEWEL POSTS
- 40x10mm FLAT BOTTOM RAIL
- OBELISK BAR HEAD TO BOTH GATES
- 50x10mm FLAT GATE FRAME
- 25x25x2.5mm SHS INFILL BARS TO GATE
- 20x4mm FLAT INFILL SCROLLS TO ARCH ABOVE MAIN GATE
- FINISH ONE COAT GREY PRIMER, ONE COAT BLACK GLOSS



VIEW ON A



DETAIL OF ARCH

150mm SQ OPEN FRAME TO TOP OF ARCH CONSTRUCTED FROM 15mm SQ SOLID FOR FUTURE LAMP  
Ends of arch members turned back as scrolls.

- Rings cut from:
- 26.090 CHS
  - 33.790 CHS
  - 42.490 CHS
  - 48.390 CHS

Art. 8  
Semi-circular arch members.

Art. 121

Art. 4  
Standard scrolls & rings used to suit.

Art. 121

538

DETAIL OF ARCH

HB 8870608

SUPPLY & ERECT

**TURNER & ROSS LTD.**

North Way, CS-6,  
Bounds Green Industrial Estate,  
Bounds Green Road, London, N11 2UN 01-358-7656

CONTRACT:  
18 NEW END SQUARE

DRAWING:  
FRONT RAILINGS

SCALE: 1/20, 1/10, 1/5

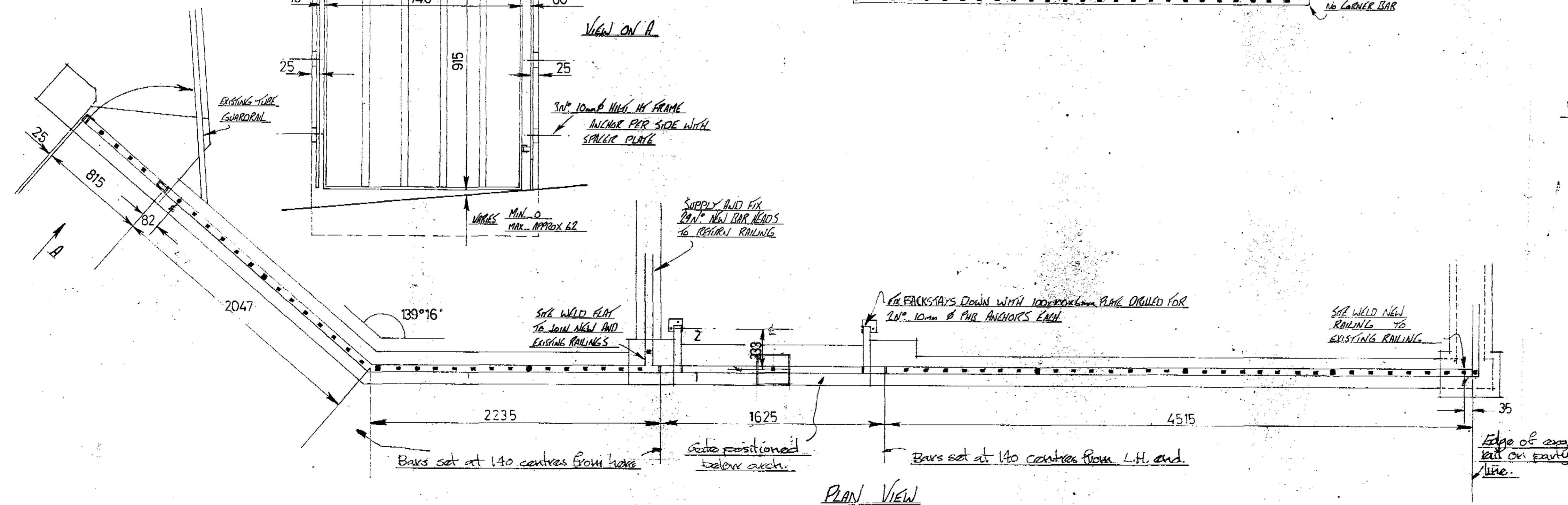
DRAWN BY: AM

DATE: 4.7.83

CHECKED BY: MR & MRS PARDOE

DATE: 4.7.83

All Measures Cut and Make Good by Others



PLAN VIEW