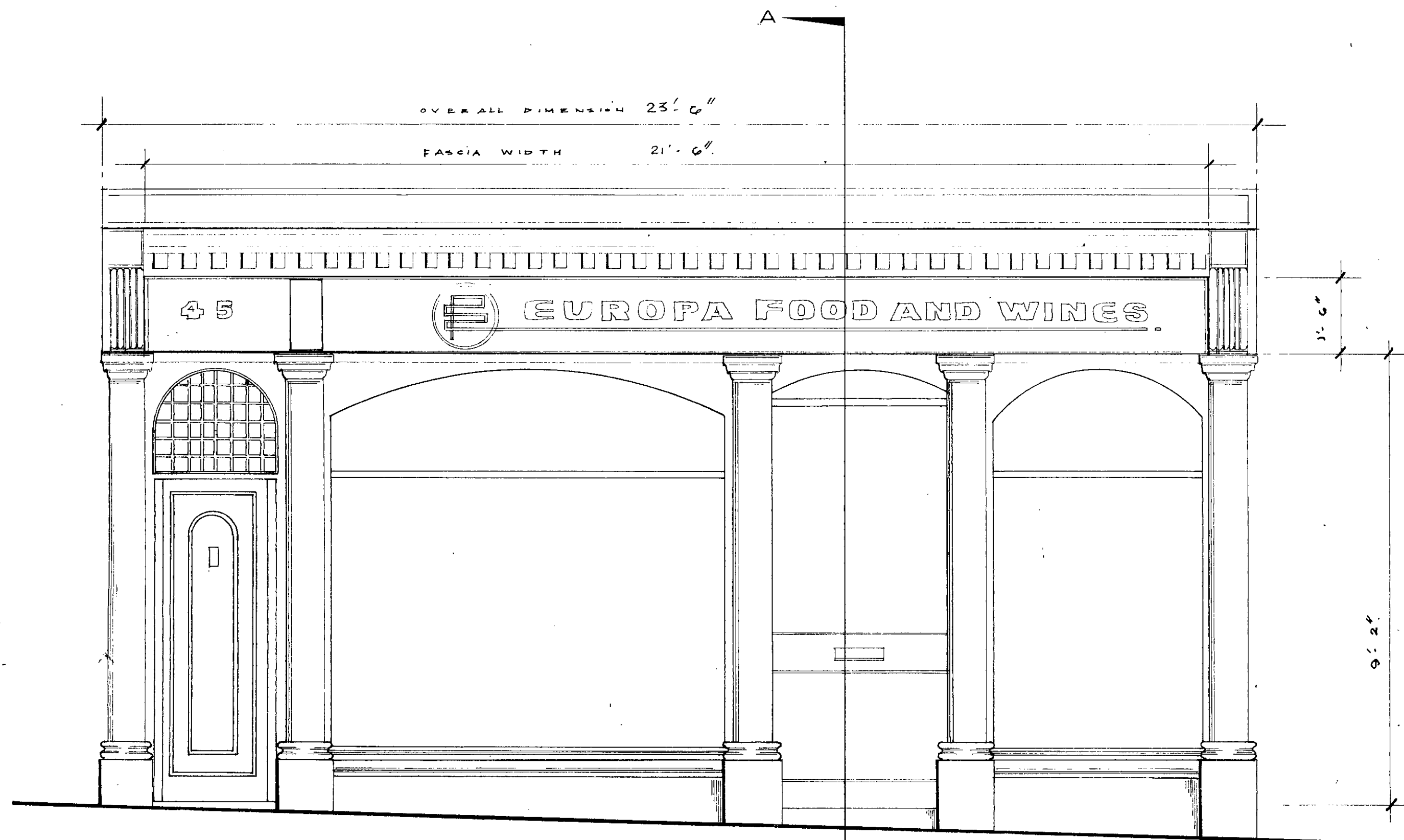
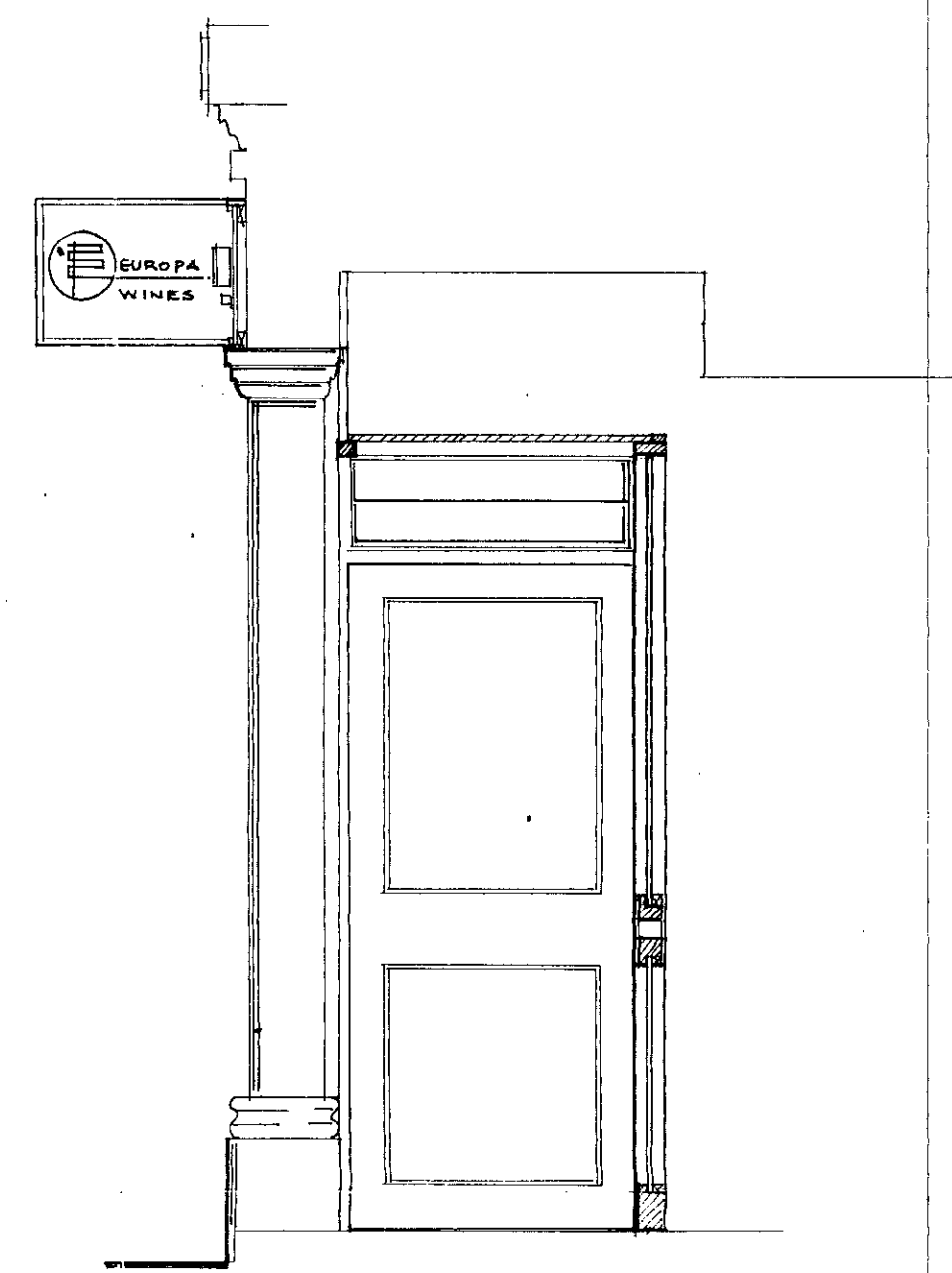


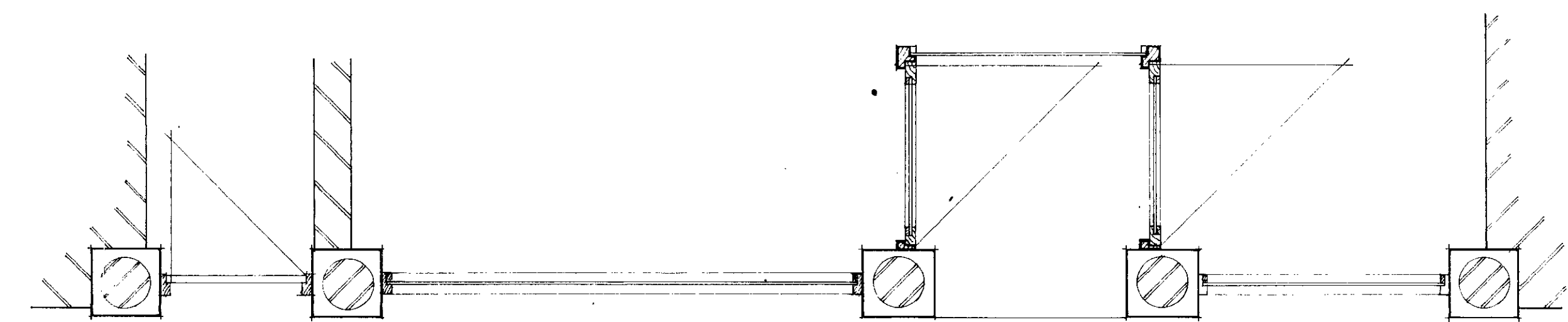
- NEW WORK TO SHOP FRONT.
1. REMOVE EXISTING SHOP ENTRANCE DOORS AND RETURN PLATES.
 2. INSTALL NEW TIMBER FRAMED 'LOBBY' CONTAINING 1 NO. ENTRANCE & 1 NO. EXIT DOOR. ALL TIMBER FRAMING (AND DOORS) TO BE FINISHED IN A GLOSS PAINT.
1/4" THICK GEORGIAN WIRE GLASS SOPHIT ON DEBATED FRAME OVER LOBBY AREA.
 3. INSTALL NEW NON-ILLUMINATED PERSEPEX FASCIA PANEL WITH APPLIED BUILT-UP NON-ILLUMINATED LETTERS. YELLOWGROUND WITH BLACK AND WHITE LETTERS WITH GOLD REVEELED EDGES.
 4. INSTALL AN INTERMEDIARY ILLUMINATED PROJECTING SIGN OF OVERALL SIZE 26" X 16" X 6".



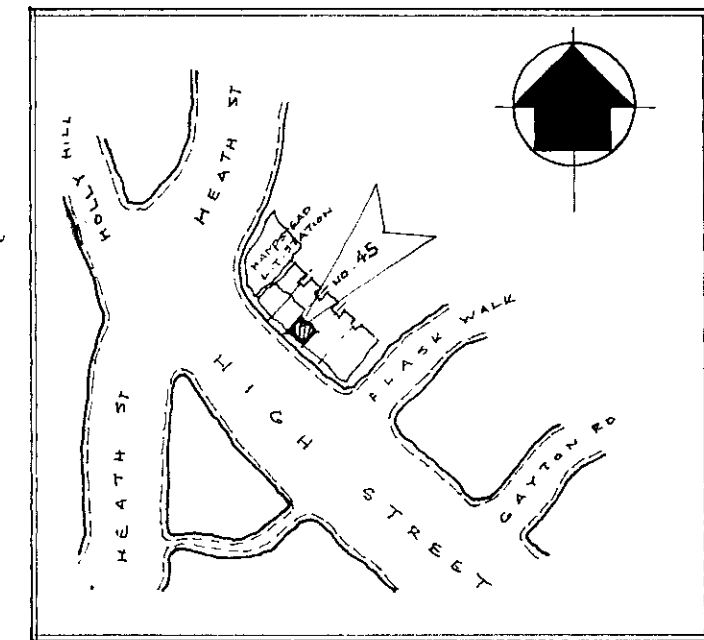
FRONT ELEVATION



SECTION A-A



PLAN



BLOCK PLAN SCALE: 1:1250.

THE COPY
LONDON BOROUGH OF CAMDEN
TOWN AND COUNTRY PLANNING ACTS
25 NOV 1975
PLANS ~~NOT APPROVED~~ APPROVED
ON BEHALF OF THE COUNCIL

E6/14/9/HB/2096

DORIK DESIGNS. 65A SOUTHGATE ROAD. LONDON. N1.3JS.
01-359-1480

SCALE 1/2" to 1'-0"
DATE: JUNE 75.
DRAWN: JERRY.
PROJ. NO. EF/HWS/102A

PROJECT:
ALTERATIONS TO SHOPFRONT ENTRANCE AND
FASCIA DETAILS AT 45, HIGH STREET, LONDON, NW3

CLIENT:
VINCES FOODS LTD.

**45 HIGH ST
LONDON
N.W.3**