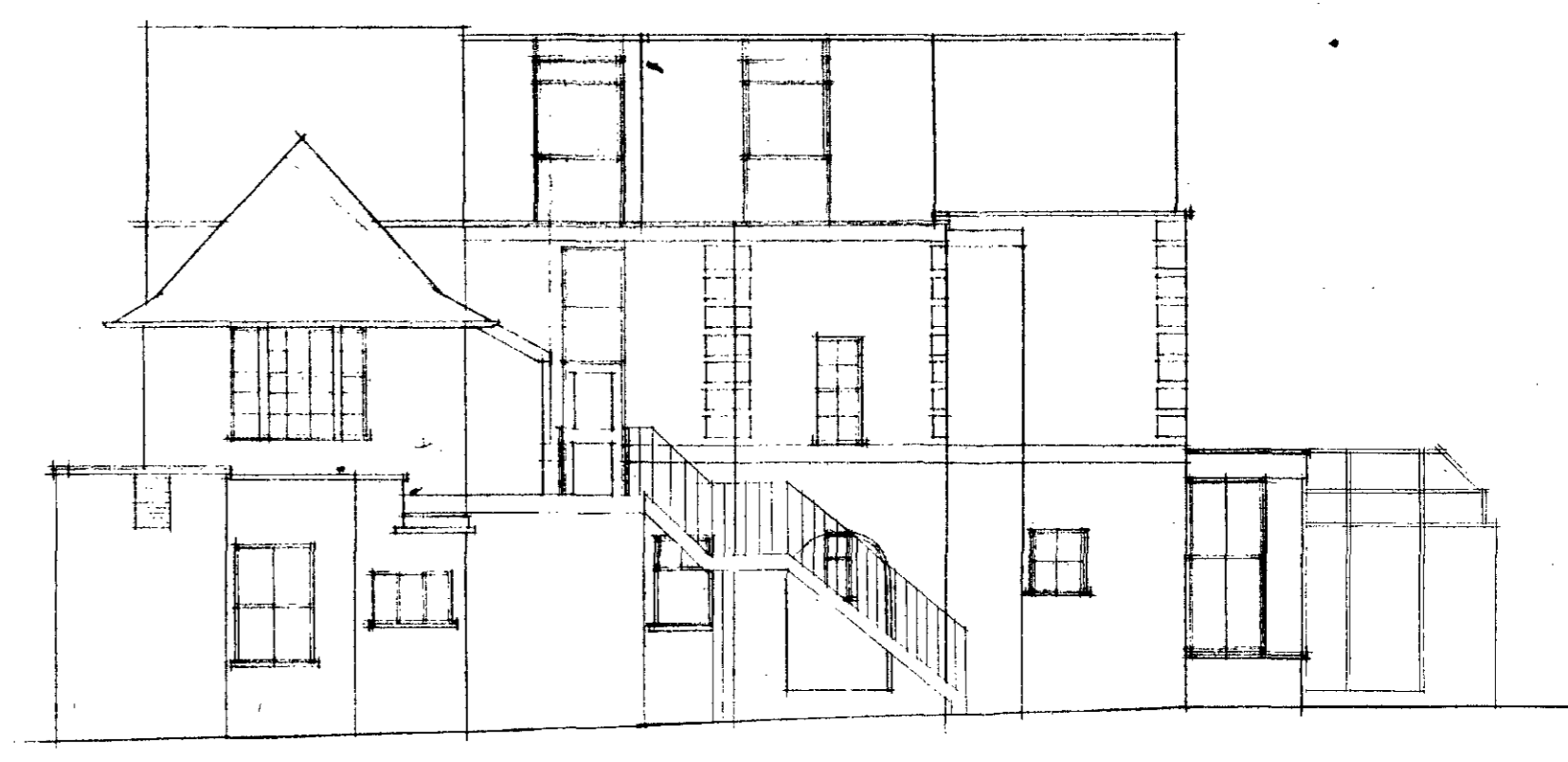
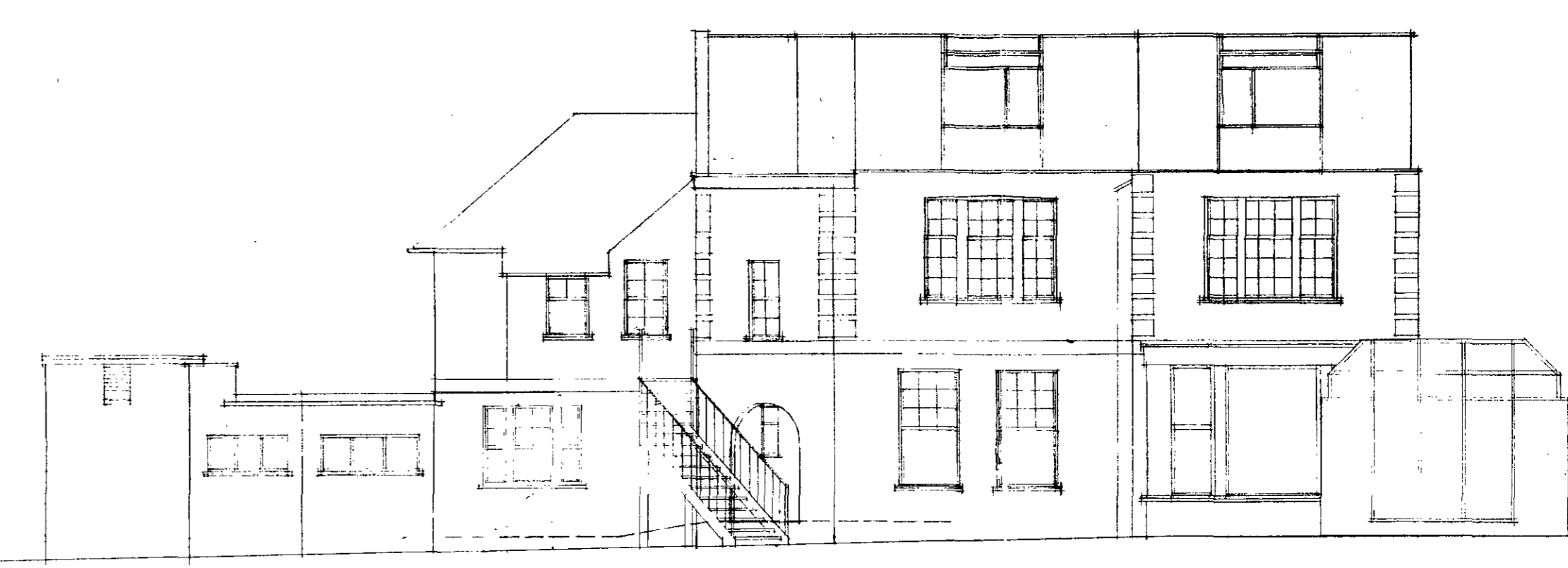


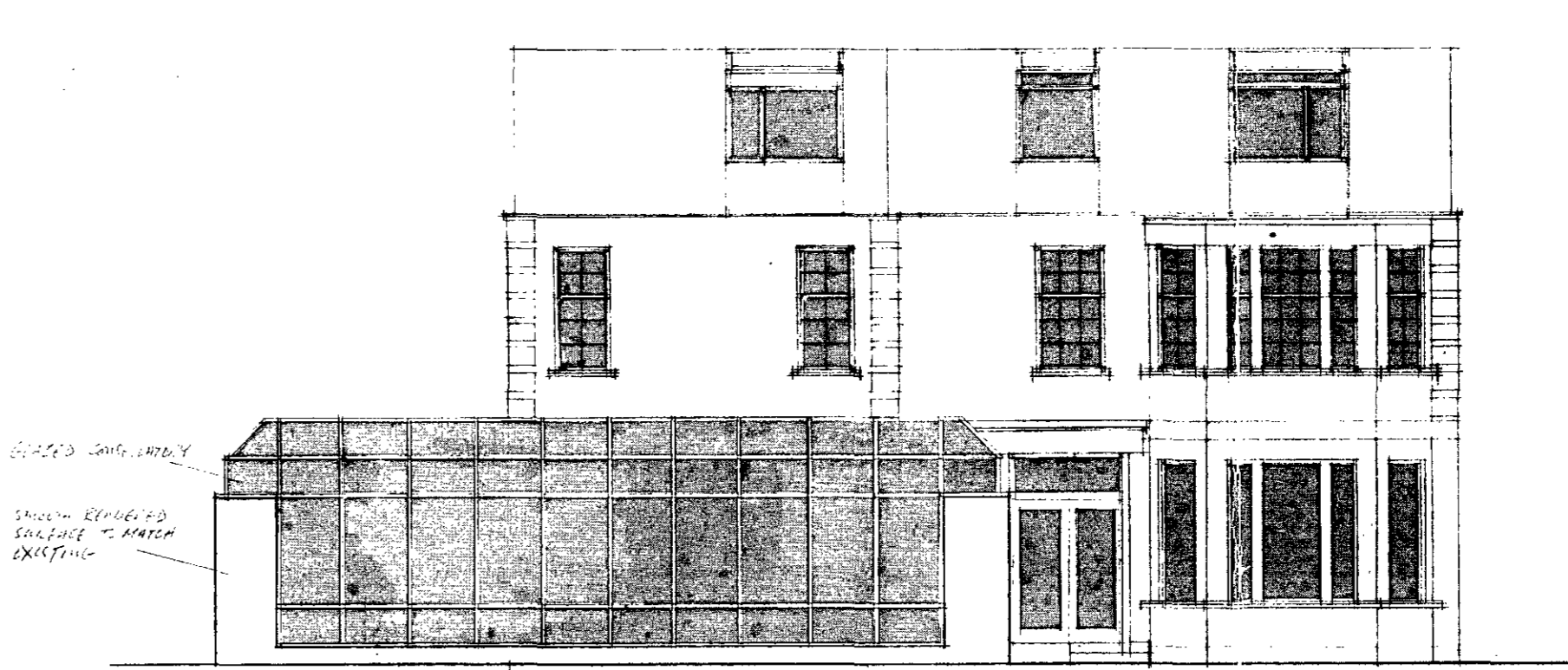
GROUND FLOOR PLAN.



rear elevation.

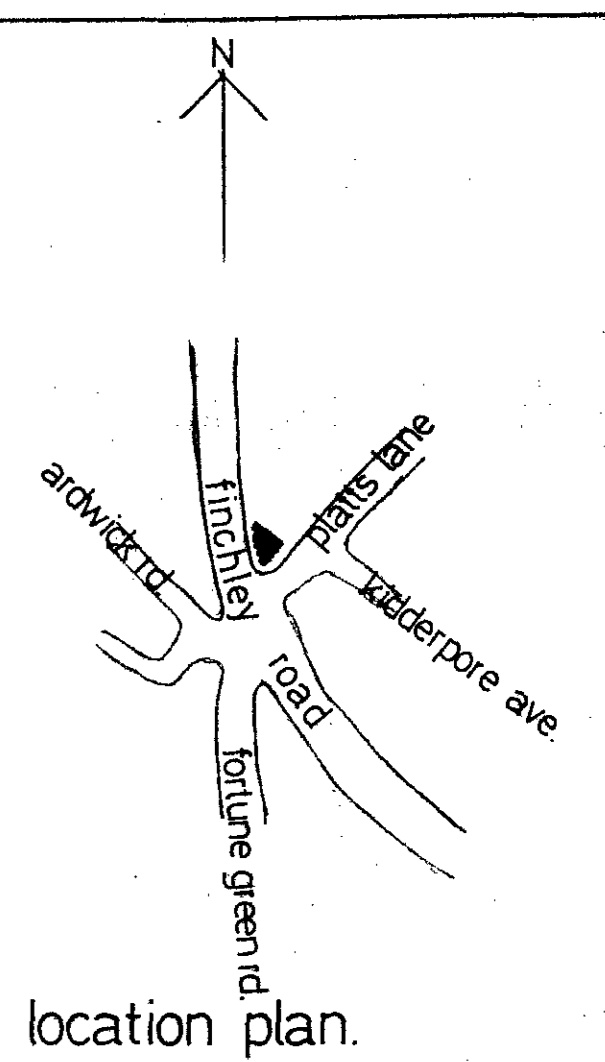


elevation onto Finchley Road.



elevation onto Platts Lane.

GENERAL NOTES



location plan.

Revisions

LONDON BOROUGH OF CAMDEN
TOWN AND COUNTRY PLANNING ACTS
18 DEC 1985
APPROVED
PLANS
ON BEHALF OF THE COUNCIL

TP 8501706

1 PLATTS LANE.
LONDON. NW3.

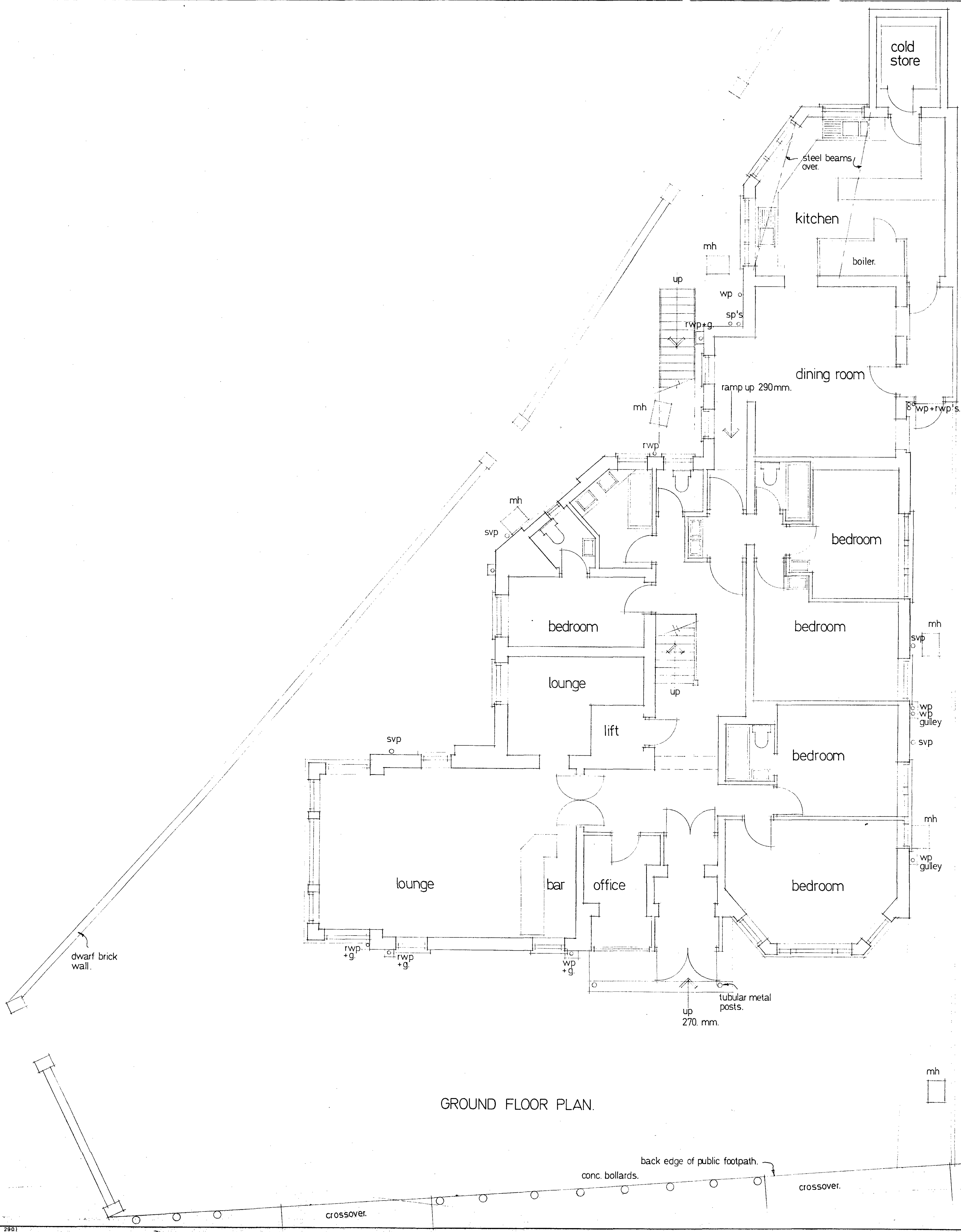
PROPOSED
PLANS

Scales 1:50. 1:100

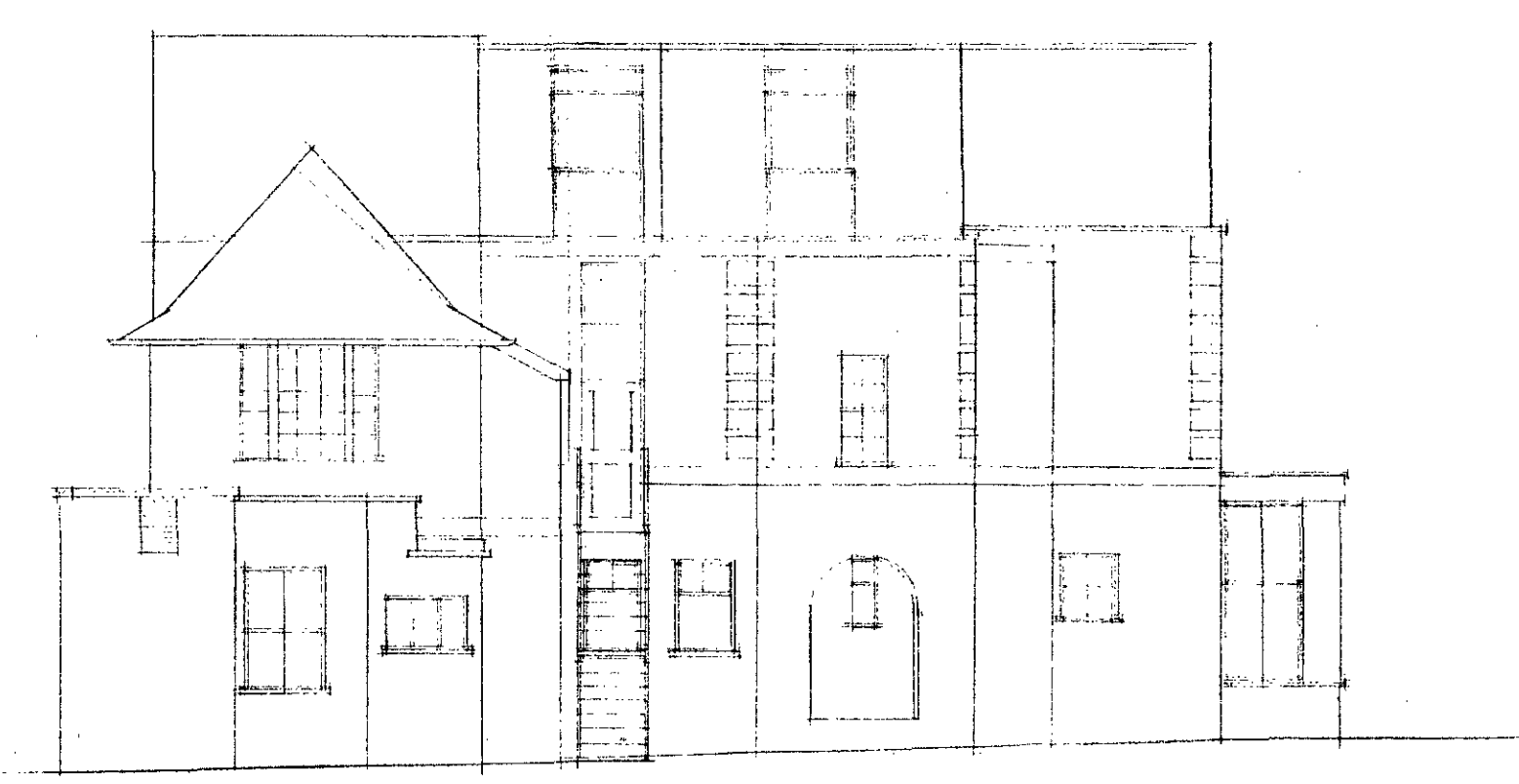
Drawn Date

Job	Drawing number	Rev.
43	02	B

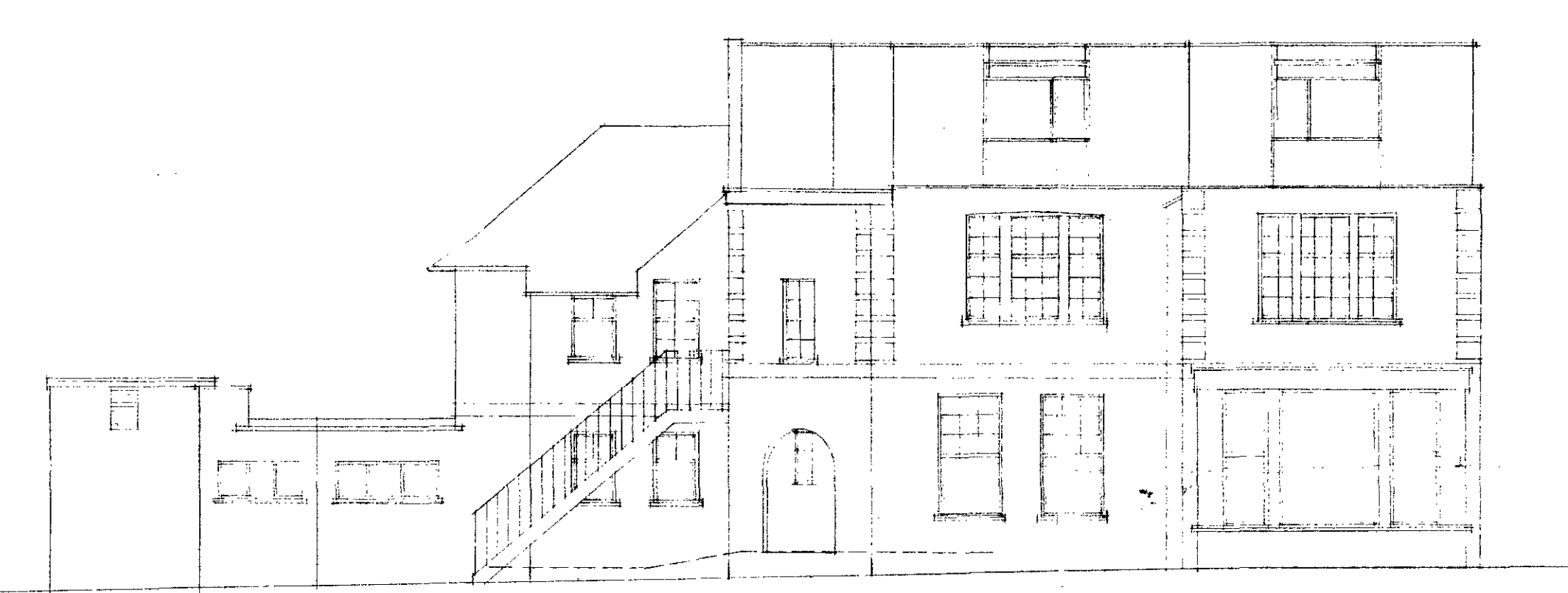
Anthony Byrne Associates.
6 Ivor Street, London NW1.
tel: 01-267 2396.



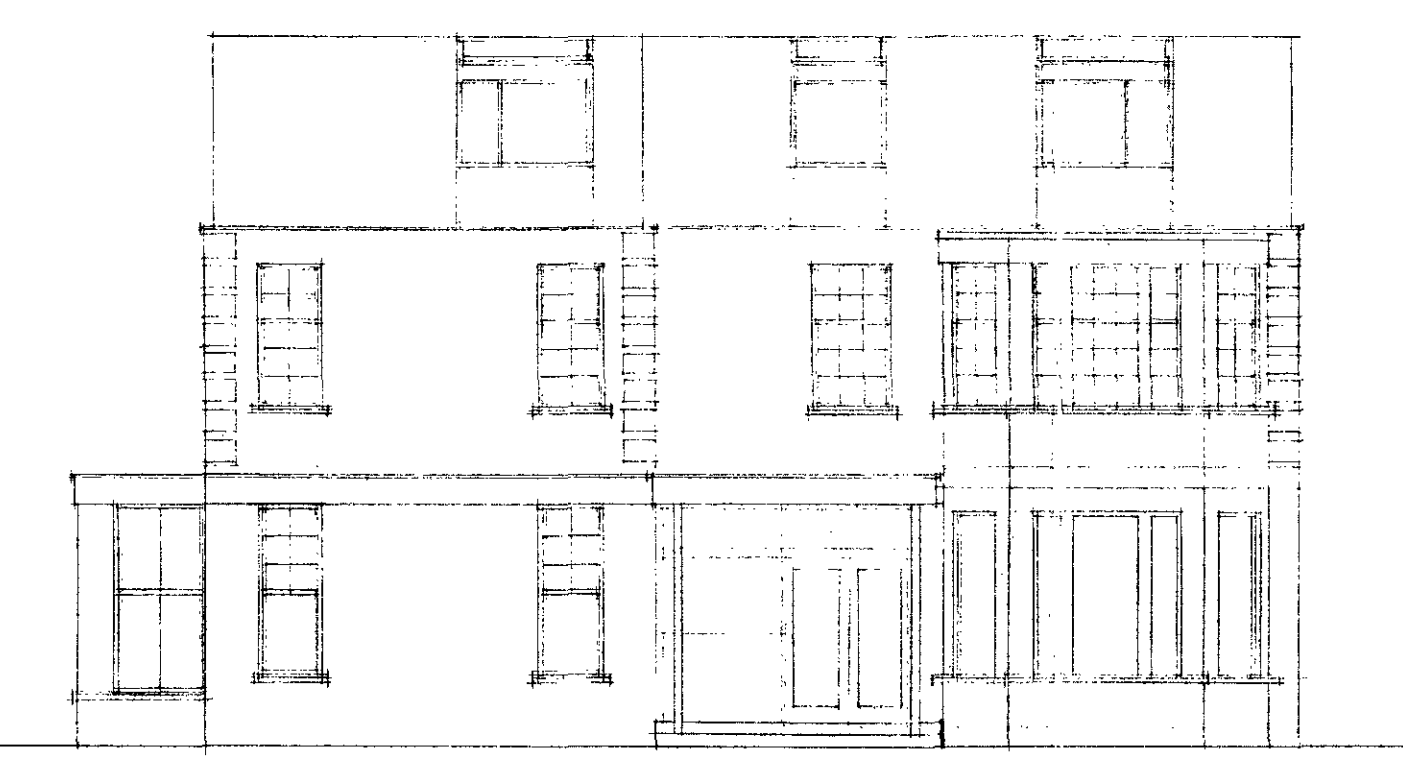
GROUND FLOOR PLAN.



rear elevation.

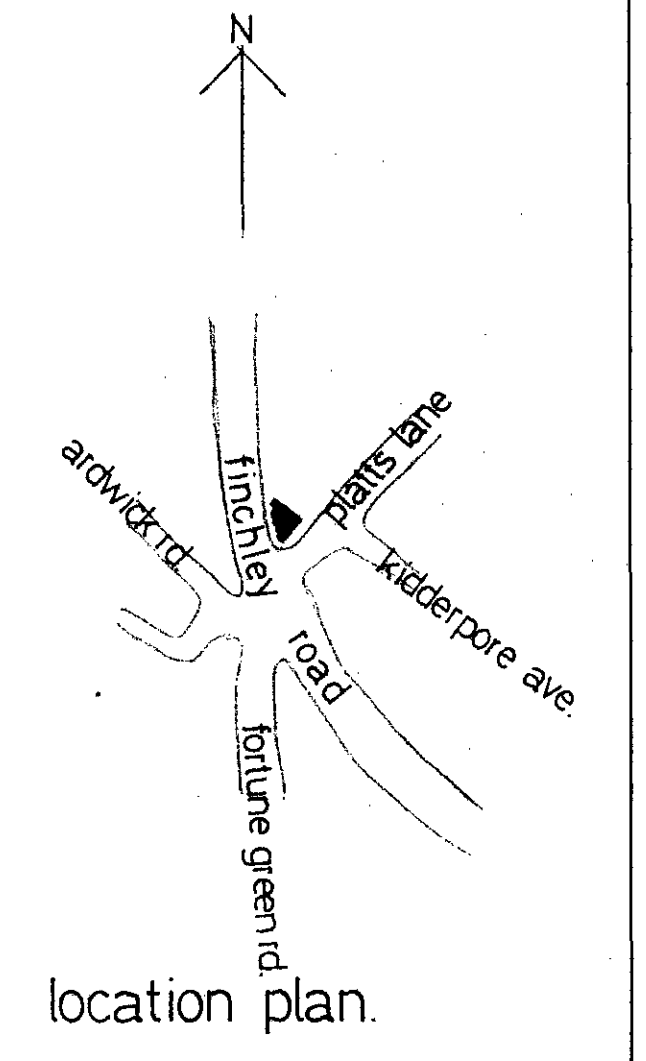


elevation onto Finchley Road.



elevation onto Platts Lane.

GENERAL NOTES



location plan.

Revisions

LONDON BOROUGH OF CAMDEN
TOWN AND COUNTRY PLANNING ACTS
18 DEC 1985
APPROVED
PLANS AND SPECIFICATIONS
ON BEHALF OF THE COUNCIL
TP 8501706

1 PLATTS LANE.
LONDON. NW 3.

Scales 1:50. 1:100

Drawn Date

Job	Drawing number	Rev.
43	01	A

Anthony Byrne Associates.
6 Ivor Street, London NW1
tel: 01-267 2396.