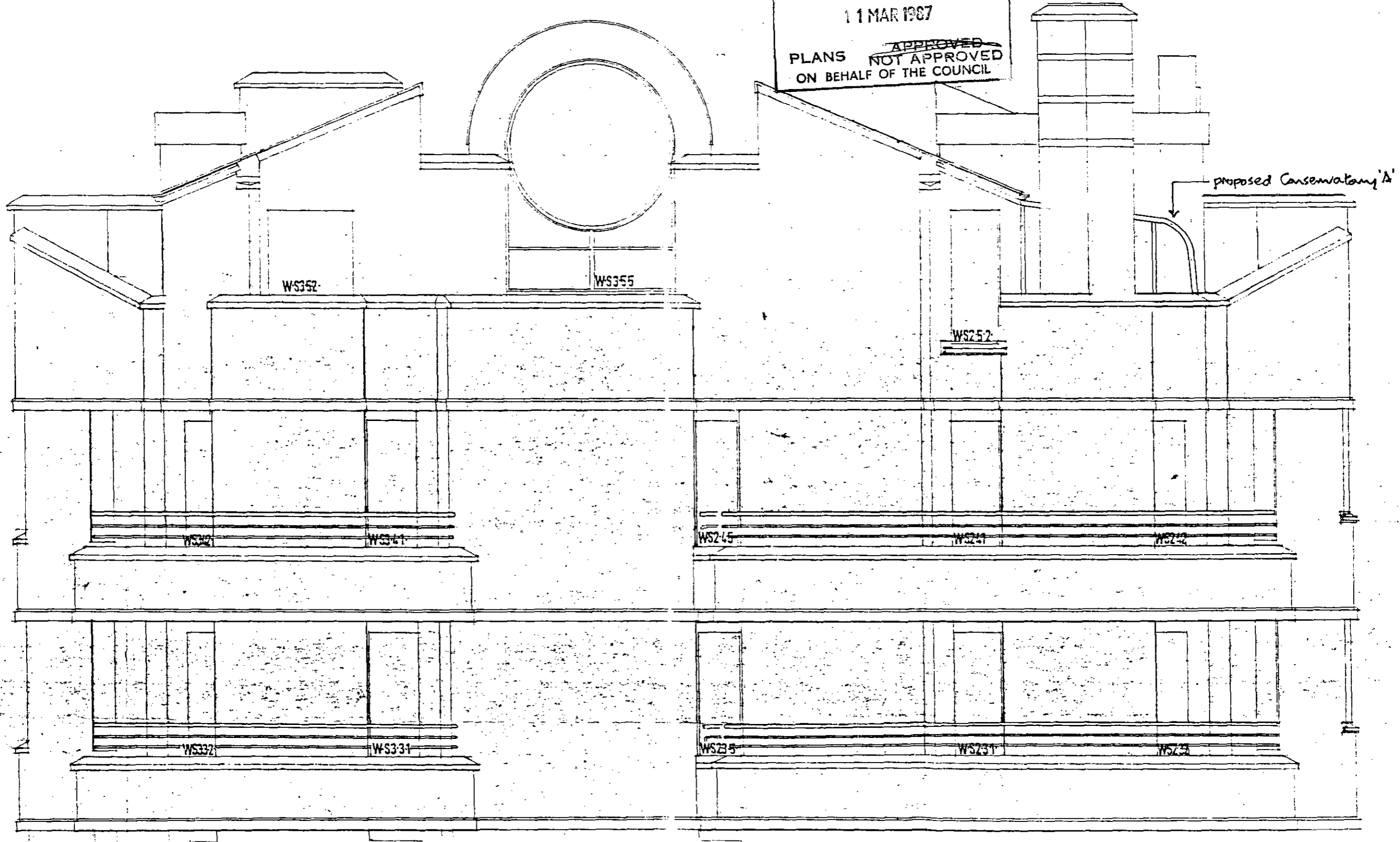


SAVON COURT, FURCREST DRIVE,  
PENTHOUSE - SPEDAN TOWER  
PROPOSED CONSERVATORIES  
PART EAST ELEVATION

TP 8700047  
**DMA** LIMITED  
Anthony Barber Associates

Dwg. no. B 734 / 9  
Scale 1:50

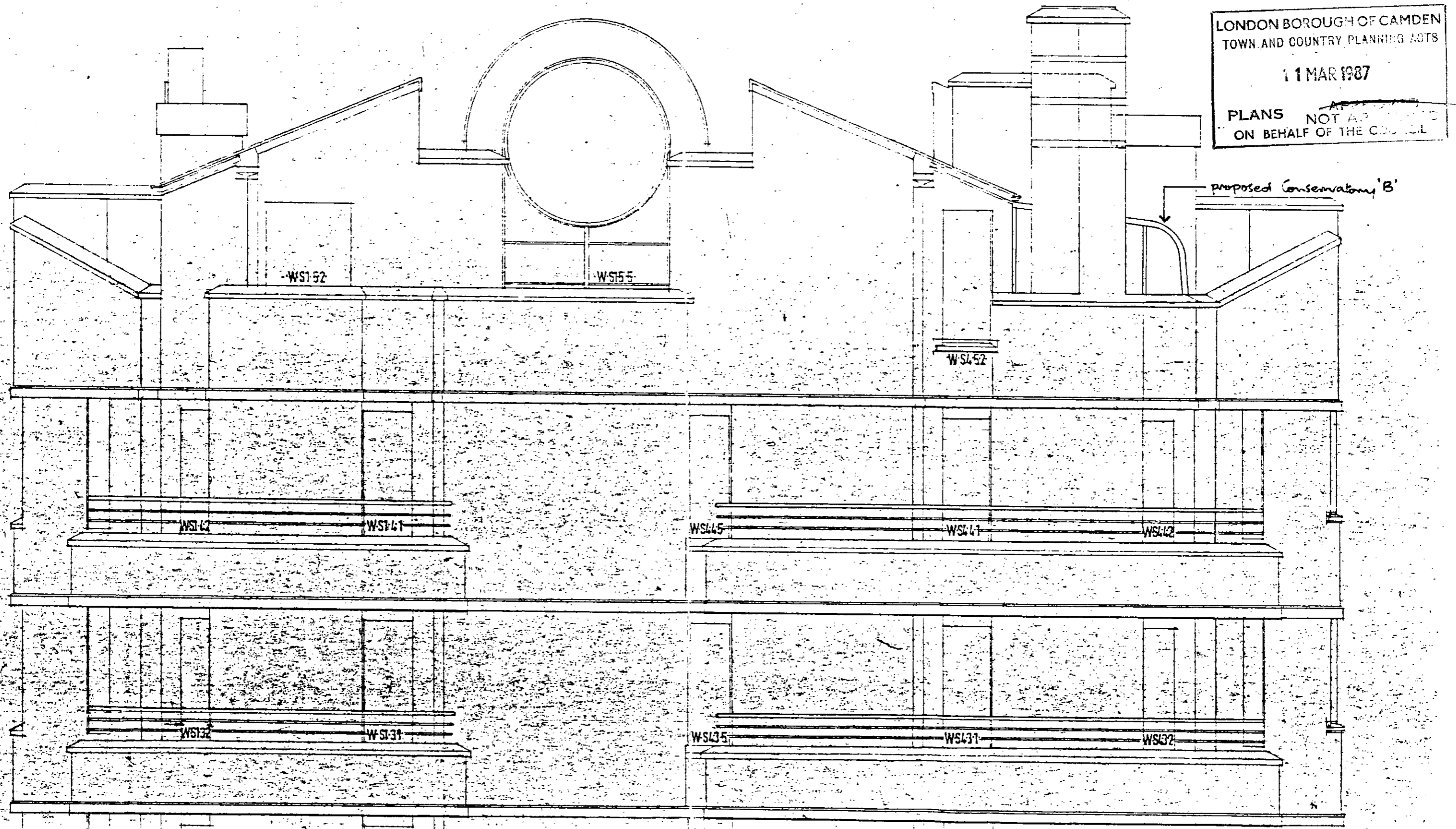
LONDON BOROUGH OF CAMDEN  
PLANNING AND COMMUNICATIONS  
DEPARTMENT  
- 7 JAN 1987 (A.M.)  
RECEIVED  
REF. TO:  
ACK: LONDON BOROUGH OF CAMDEN  
TOWN AND COUNTRY PLANNING ACTS  
11 MAR 1987  
PLANS ~~APPROVED~~  
NOT APPROVED  
ON BEHALF OF THE COUNCIL



PENTHOUSE - SPEDAN TOWER  
PROPOSED CONSERVATORIES  
PART WEST ELEVATION

TP 8700047  
**DMC** LIMITED  
Anthony Barber Associates

Dwg. no. B 734/10  
Scale 1:50





Anthony Barber Associates

Dwg no B 734/11

Scale 1:50

SARAI COURT, FREECREST DRIVE,  
PENTHOUSE SPEDAN TOWER  
PROPOSED CONSERVATORIES  
PART NORTH ELEVATION

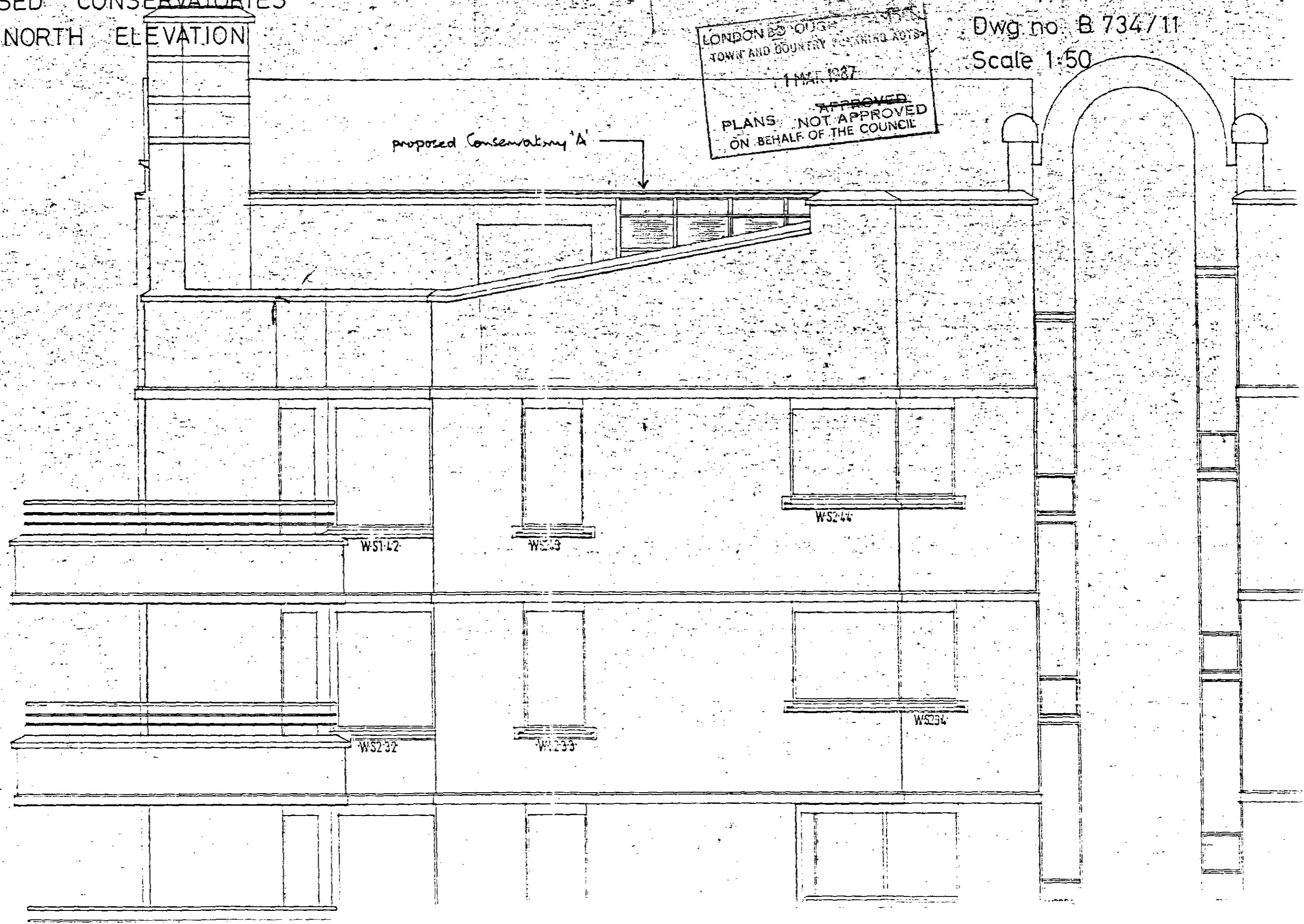
LONDON BOROUGH OF  
TOWN AND COUNTRY PLANNING ACTS  
1 MAY 1987  
APPROVED  
PLANS NOT APPROVED  
ON BEHALF OF THE COUNCIL

proposed Conservatory 'A'

level 5 S1234/5

level 4 S23/4

level 3 S23/3



SAYON COURT, FURKERST DRIVE,  
PENTHOUSE - SPEDAN TOWER  
PROPOSED - CONSERVATORIES  
PART SOUTH ELEVATION

TP 8700047  
**DMC** LIMITED  
Anthony Barber Associates  
Dwg no. B 734/12A  
Scale 1:50

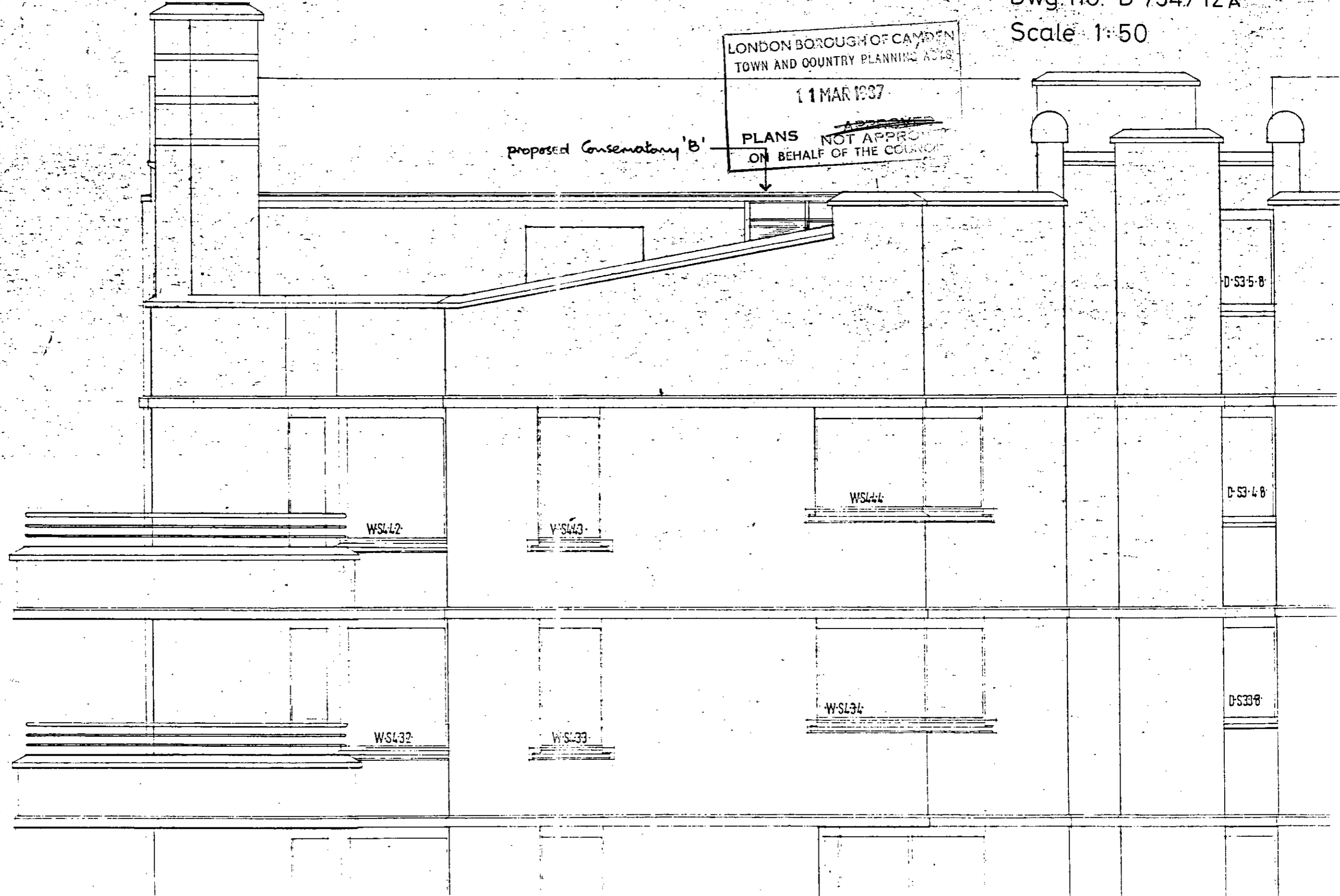
LONDON BOROUGH OF CAMDEN  
TOWN AND COUNTRY PLANNING ACTS  
11 MAR 1987  
~~APPROVED~~  
PLANS NOT APPROVED  
ON BEHALF OF THE COUNCIL

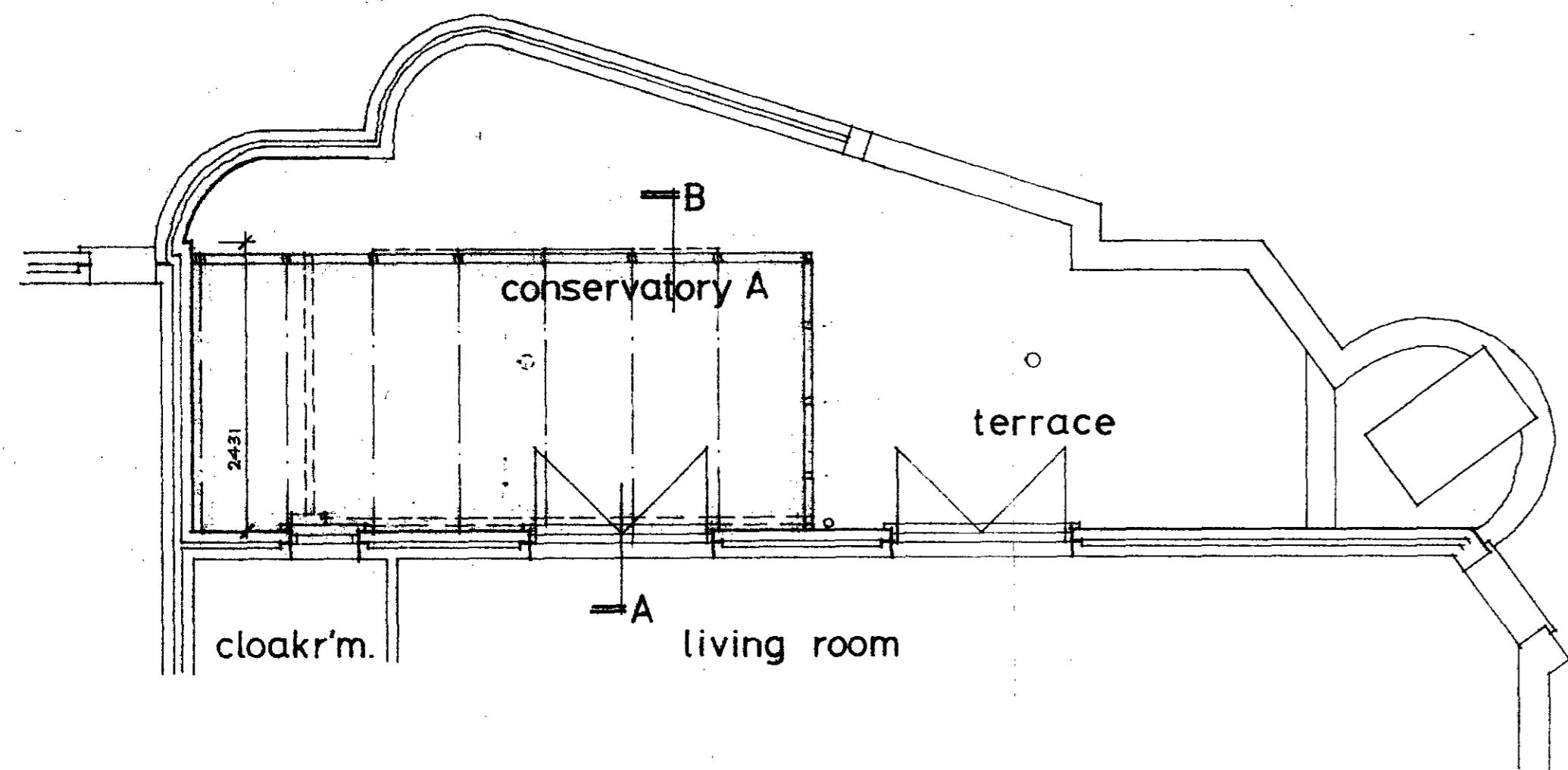
proposed Conservatory 'B'

level 5 S1234/5

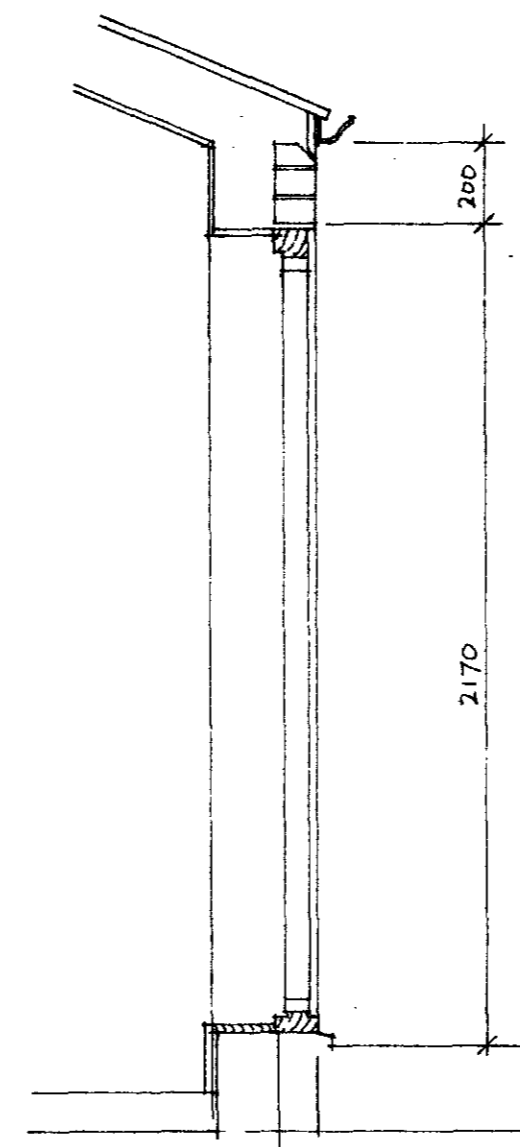
level 4 S14/4

level 3 S14/3

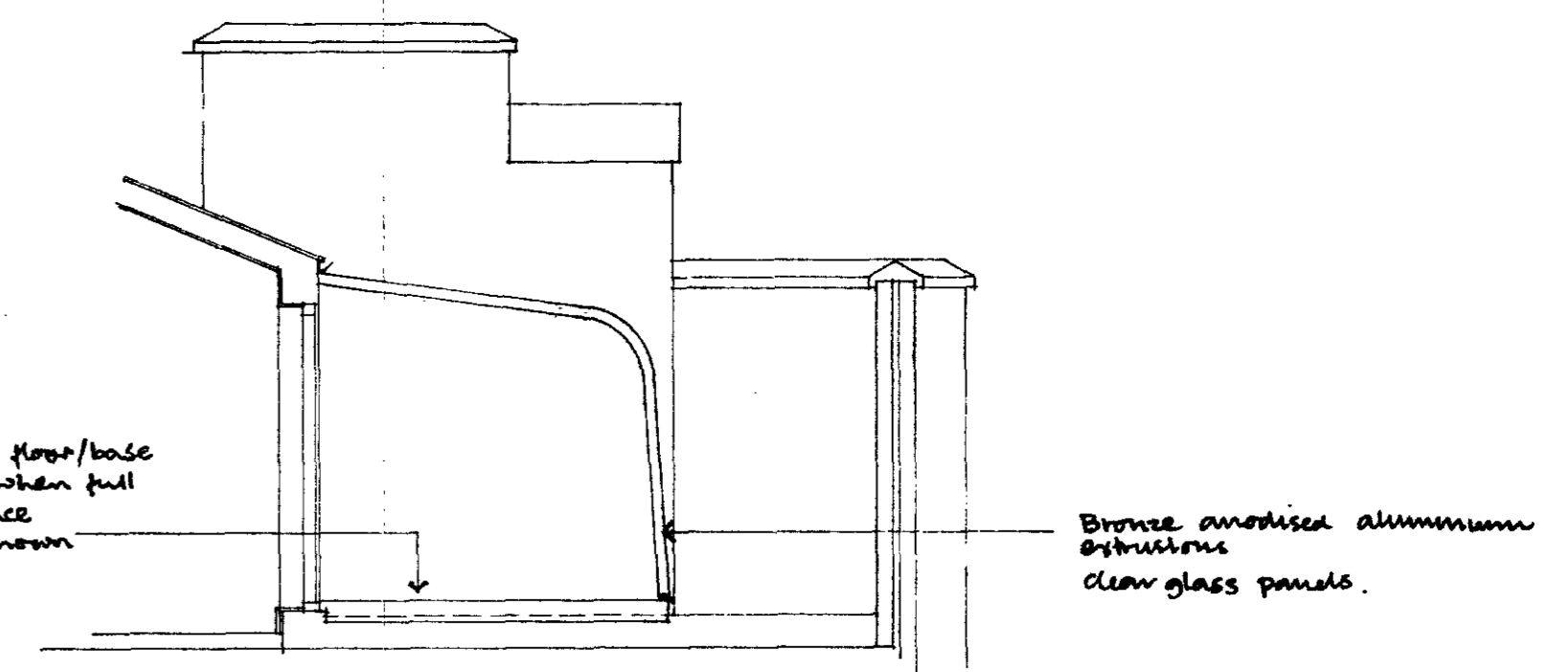




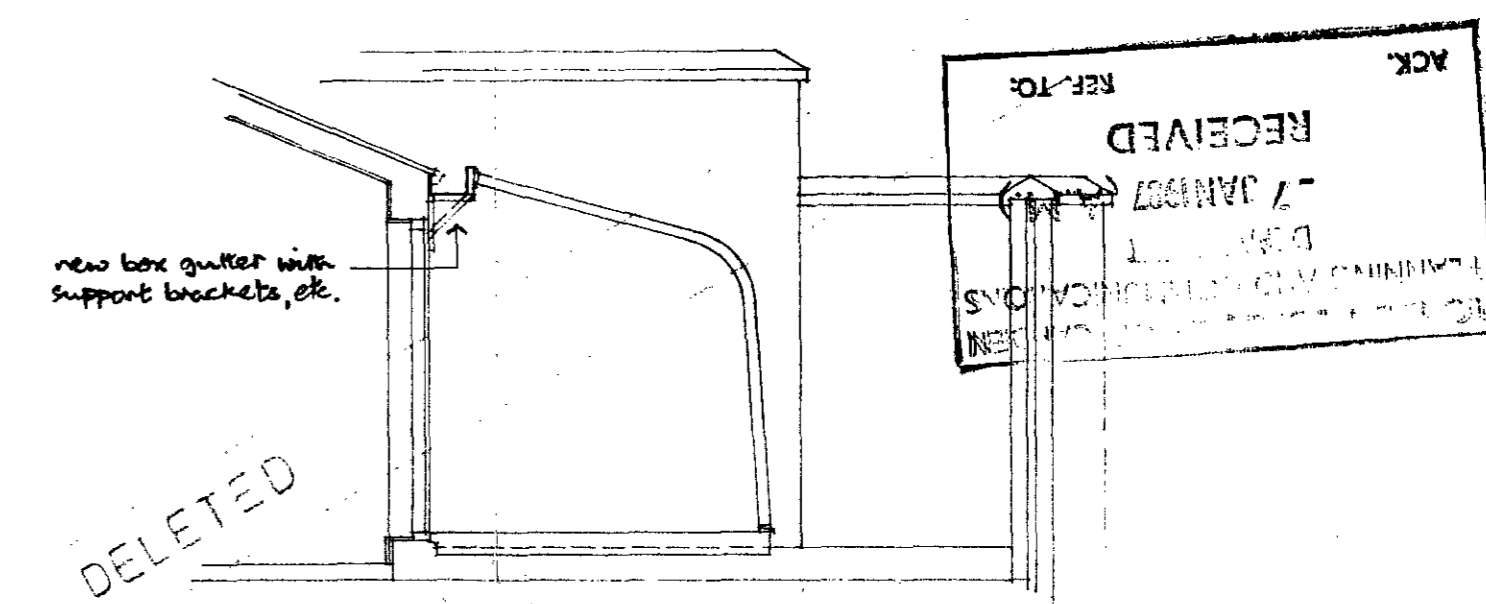
PART PLAN  
alternative 1 shown



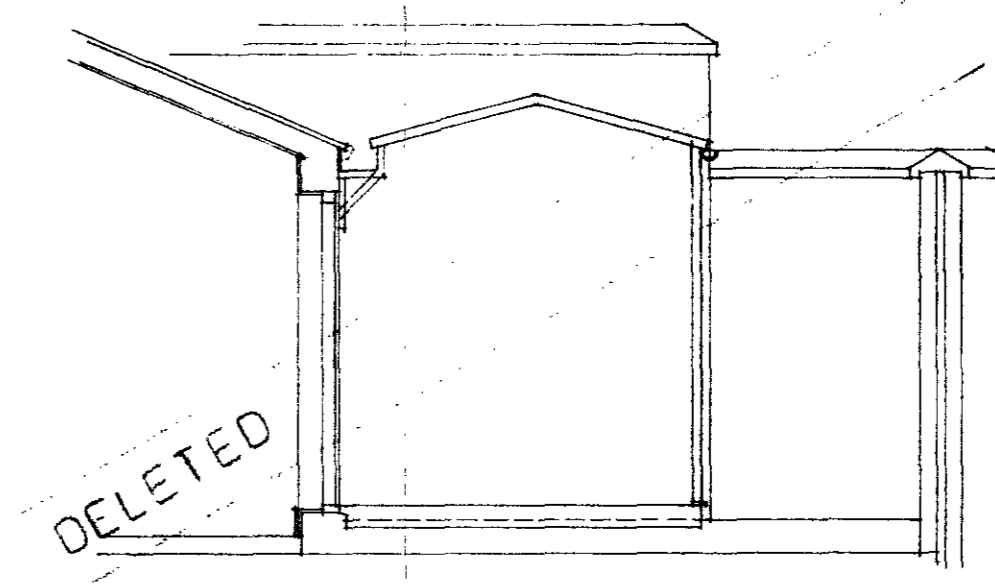
EXTG. SECTION A



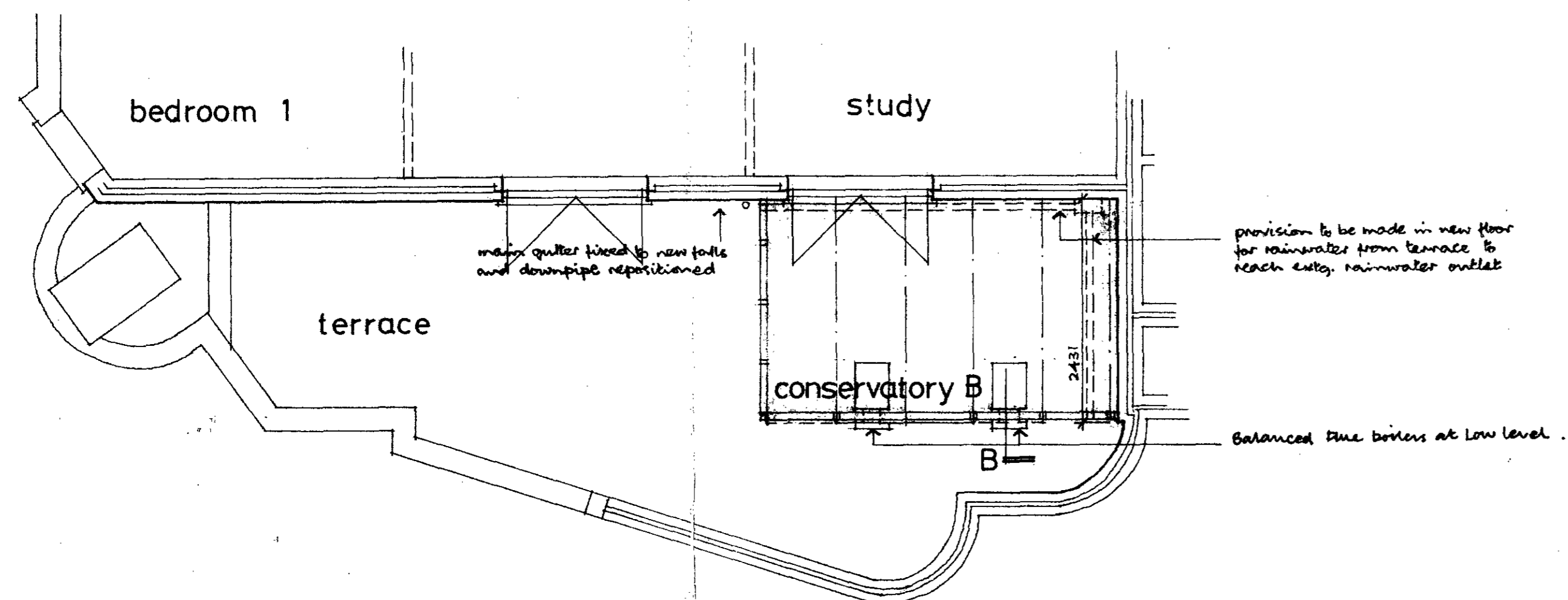
SECTION B - alternative 1  
based on 'special standard' arrangement



SECTION B - alternative 2  
based on 'standard' arrangement



SECTION B - alternative 3



PART PLAN  
alternative 1 shown

LONDON BOROUGH OF CAMDEN  
TOWN AND COUNTRY PLANNING ACTS  
11 MAR 1987  
PLANS ~~APPROVED~~  
NOT APPROVED  
ON BEHALF OF THE COUNCIL

TP 8700047

**DMAC** LIMITED

Anthony Barber Associates

St. Johns House 2 Romford Road  
Stratford E15 4BU Tel. 01-534 8852/3/4

Contract ~~SAVON COURT, FULBROOK DRIVE~~

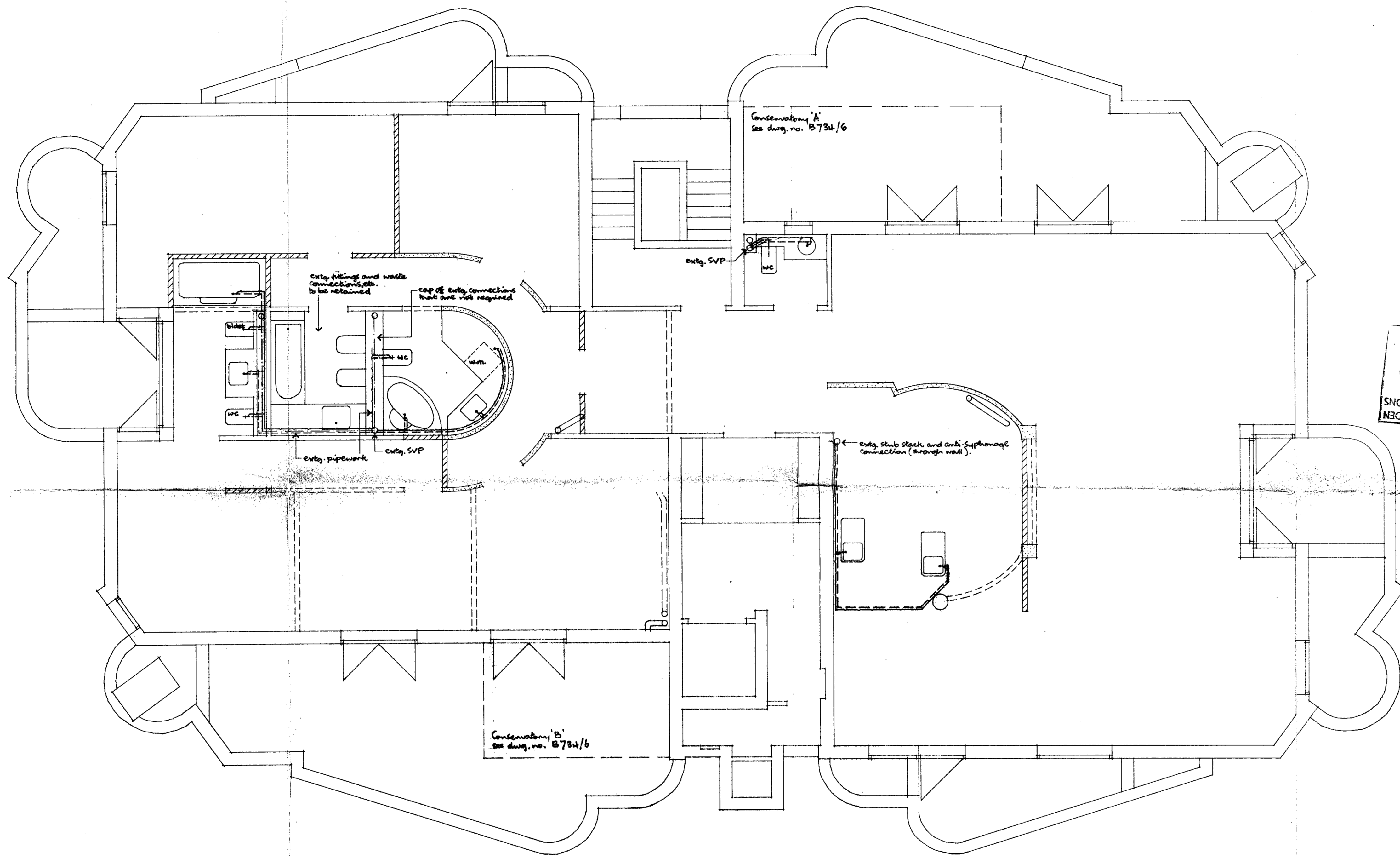
PENTHOUSE  
SPEDAN TOWER

Title  
CONSERVATORY  
SCHEMES

B Jan 87 Batten Pine omitted.  
Balanced Pine batten added.

A Dec 86 Alternatives 2 and 3 deleted.  
Batten Pine shown: Conservatory B.  
note added.

Scale	1:20	1:50	Date	Nov.86	Drawn	GG
	B	734		6		B



**NOTES**

- ==== Existing C&C partitions shown thus
- ==== New C&C partitions shown thus
- ==== Partitions to be removed shown thus
- ==== Existing conc. partitions shown thus

**PLUMBING, WASTES, ETC.**

- Existing wastes shown thus
- Existing anti-siphonage shown thus
- Existing soil pipes shown thus
- New 50 PVC waste headers shown thus
- New 50 PVC anti-siphonage shown thus
- New 100 soil pipes shown thus

All waste fittings to have 75 deep steel traps and anti-siphonage connections

Waste fittings to be connected with traps of diameters noted below to 50 waste headers shown

Trap diameters :-

Sinks	25 mm
Bidets	32 mm
Handbasins	32 mm
Toilets	50 mm
Washing Machines	50 mm

All waste pipework to be adequately fixed to prevent falls and anti-siphonage pipework to be sized towards open vented end.

All wastes to be fitted with cleaning eyes at all major changes in direction.

Soil pipes to be fitted with access plates at changes in direction and with capped stub stacks at end of runs to assist rodding.

Removable panels to be provided as required to provide access to all traps, cleaning eyes and access plates/stub stacks.

No connections to be made to SVPs within 200mm below a soil branch connection.

All pipework to be installed in compliance with the provisions of Approved Document H under The Building Regulations 1985.

LONDON BOROUGH OF CAMDEN  
 PLANNING AND COMMUNICATIONS  
 D. J. P. M. D.  
 7 JAN 1987 (A.M.)  
 RECEIVED  
 ACK.

LONDON BOROUGH OF CAMDEN  
 TOWN AND COUNTRY PLANNING ACTS  
 11 MAR 1987  
 APPROVED  
 NOT APPROVED  
 ON BEHALF OF THE COUNCIL

TP 8700047

**IDMAC LIMITED**

**Anthony Barber Associates**

St. Johns House 2 Romford Road  
 Stratford E15 4BU Tel. 01-634 8862/3/4

Contract SAVON COURT, FURCREST DRIVE  
**PENTHOUSE**  
**SPEDAN TOWER**  
 Title  
**PARTITION AND WASTE LAYOUTS**

Scale	1:50	Date	Sept 86	Drawn	G.S.
B	734	1	A		