

Notes

Case 9803

LONDON BOROUGH OF CAMDEN  
 TOWN AND COUNTRY PLANNING ACTS  
 PLANS APPROVED  
 ON BEHALF OF THE COUNCIL  
 13 AUG 1998

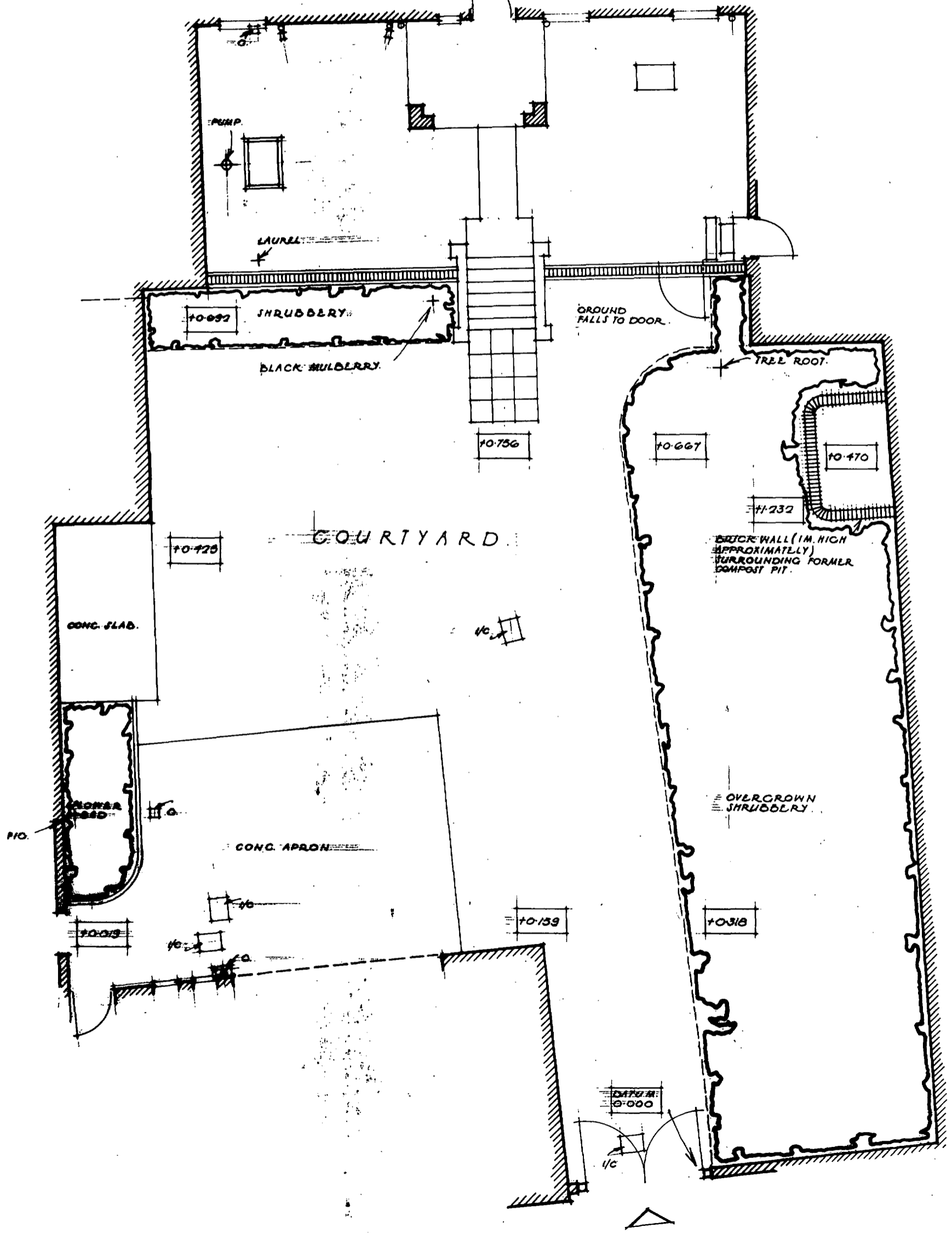
P9802482W

THE NATIONAL TRUST  
 Thames & Chilterns Region  
 Hughenden Manor  
 High Wycombe  
 Buckinghamshire  
 HP14 4LA  
 Telephone 0494 528051

FENTON HOUSE,  
 WINDMILL HILL,  
 HAMPSHIRE,  
 LONDON, NW3 6RT.

SURVEY OF COURTYARD

Drawn by KEITH BARNES  
 Date APRIL '97  
 Scale 1:100  
 Drwg No. 97/30



Notes

LONDON BOROUGH OF SUTTON  
 TOWN AND COUNTRY PLANNING DEPARTMENT  
 13 AUG 1998  
 APPROVED  
 ON BEHALF OF THE COUNCIL  
 CM E. P. 13 AUG 1998  
 ON BEHALF OF THE COUNCIL

P9802482W1

The scheme amended in accordance with Historic Buildings Regs. requirements. 6th May '98  
 A. Wallie fencing shown door shown to be refung to open inwards, steps 'up' from door shown, area of shrubbery amended shown, 7th July '97.

THE NATIONAL TRUST  
 Thames & Chilterns Region  
 Hughenden Manor  
 High Wycombe  
 Buckinghamshire  
 HP14 4LA  
 Telephone 0494 528051

FENTON HOUSE,  
 WINDMILL HILL,  
 HAMPUSTEAD,  
 LONDON, NW3 6RI.

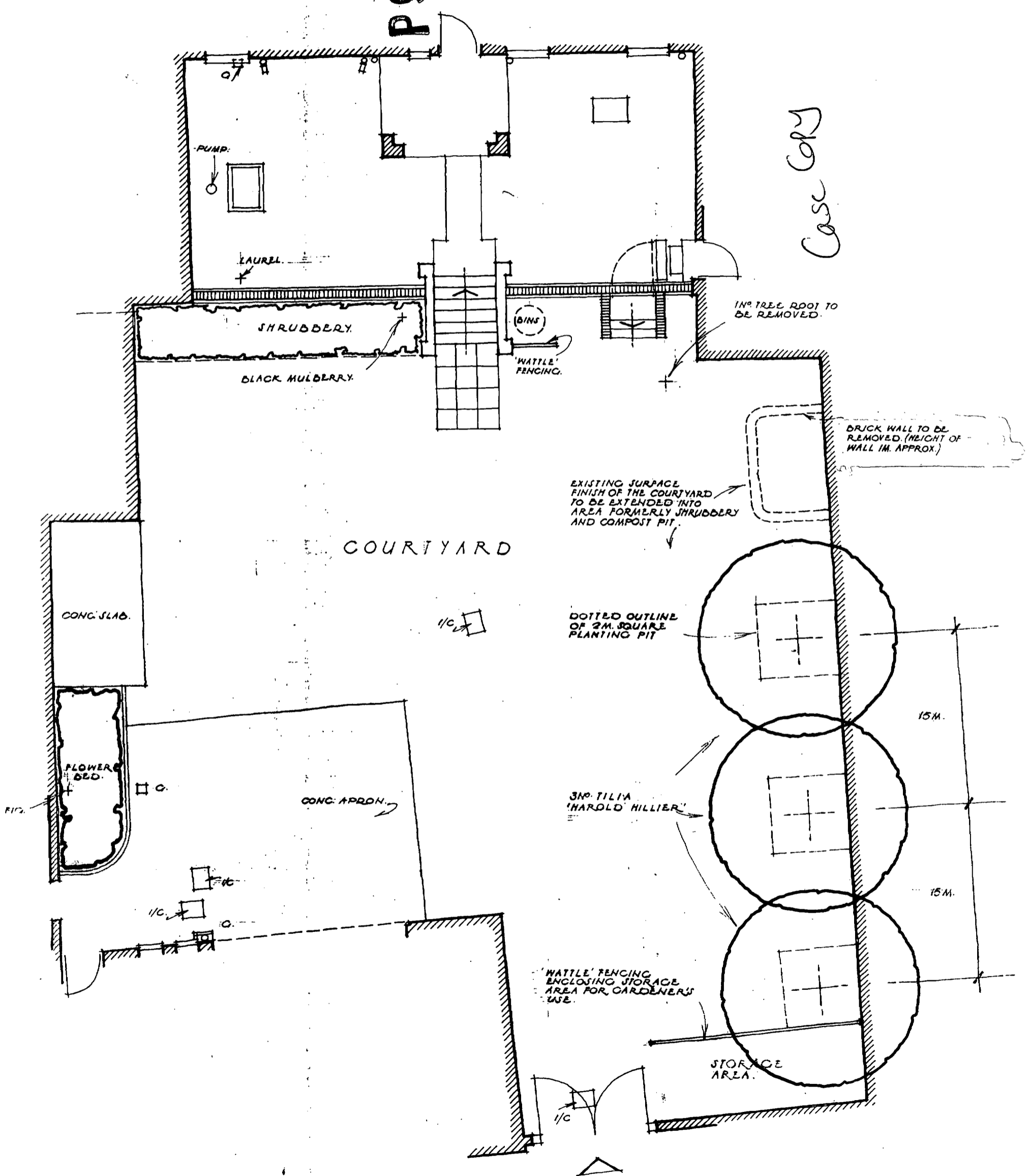
ALTERATIONS TO  
 COURTYARD SCHEME 1.

Drawn by KEITH BARNES.

Date APRIL '97

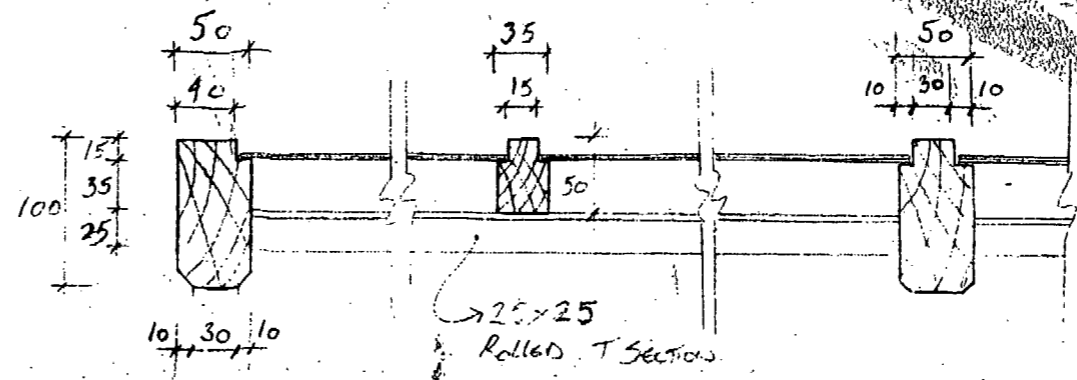
Scale 1:100

Drwg No. 97/31 'B'

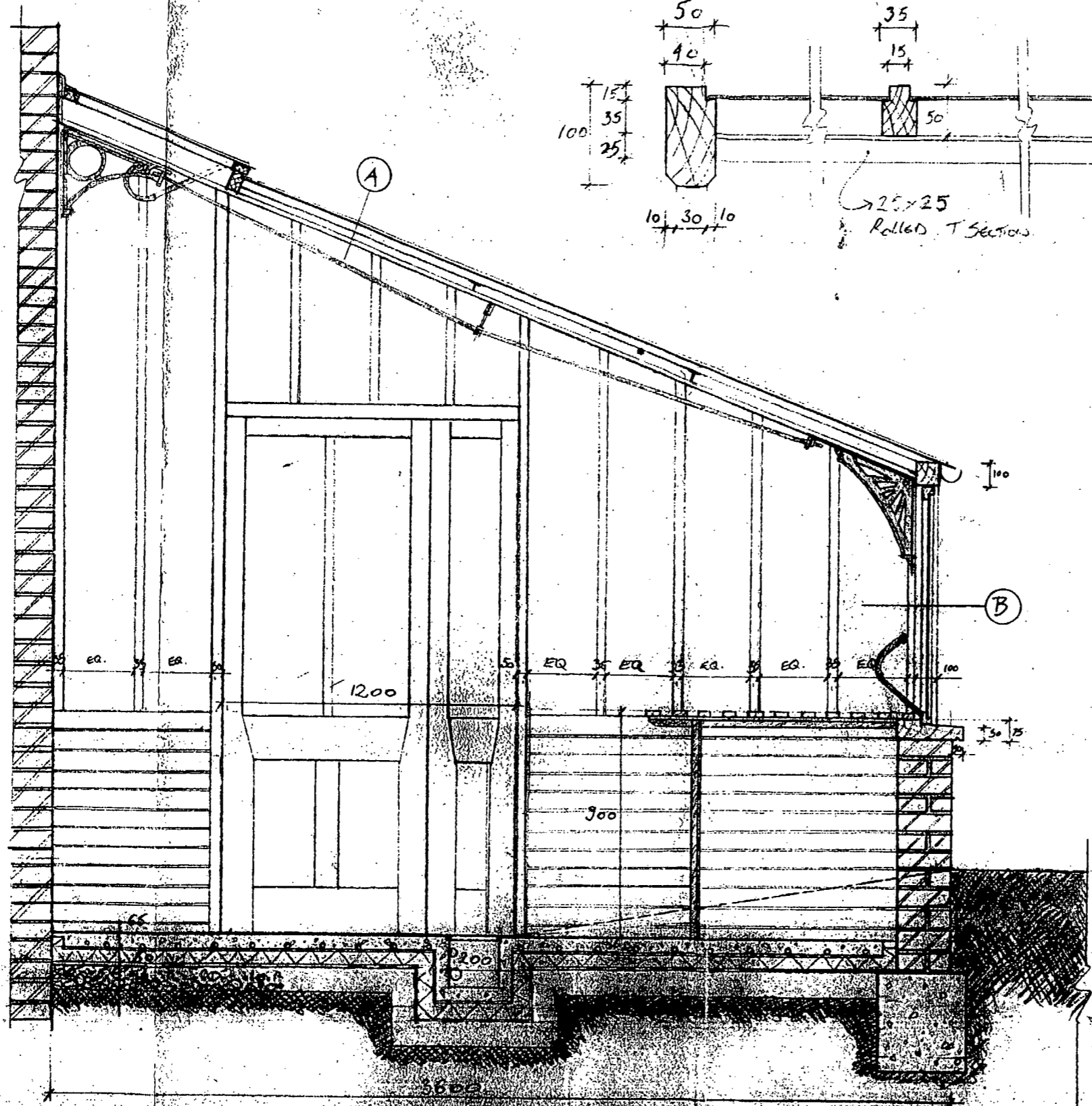
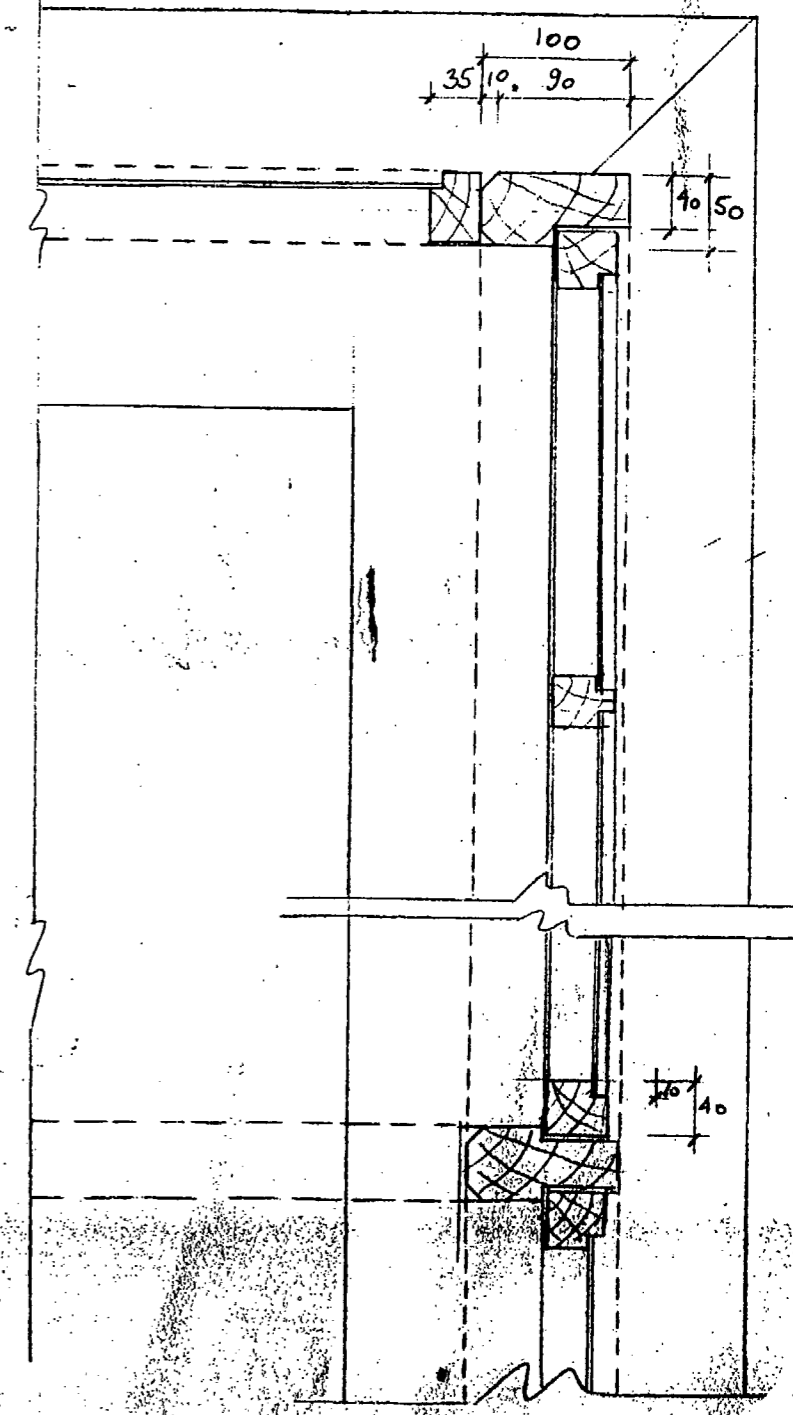


Case 609  
LW9802482

Detail A 1:5



Detail B 1:5



LONDON BOROUGH OF CAMDEN  
TOWN AND COUNTRY PLANNING ACTS  
**10 SEP 1998**  
PLANS APPROVED  
ON BEHALF OF THE COUNCIL

Job No. 07/98	Date 07/98	Title Fenton House Glorhouse
Stage K	Scale 1:20	Drawn Cross Section
Dwg. No. 004		

**SELL WADE POSTINS**  
Architects and Conservation Consultants  
Park and Garden Conservation Consultants  
London, Shepperton, Faversham, Kent  
17 Daleham Mews, London, NW3 5DB  
Tel: 071 431 0464 Fax: 071 431 5808