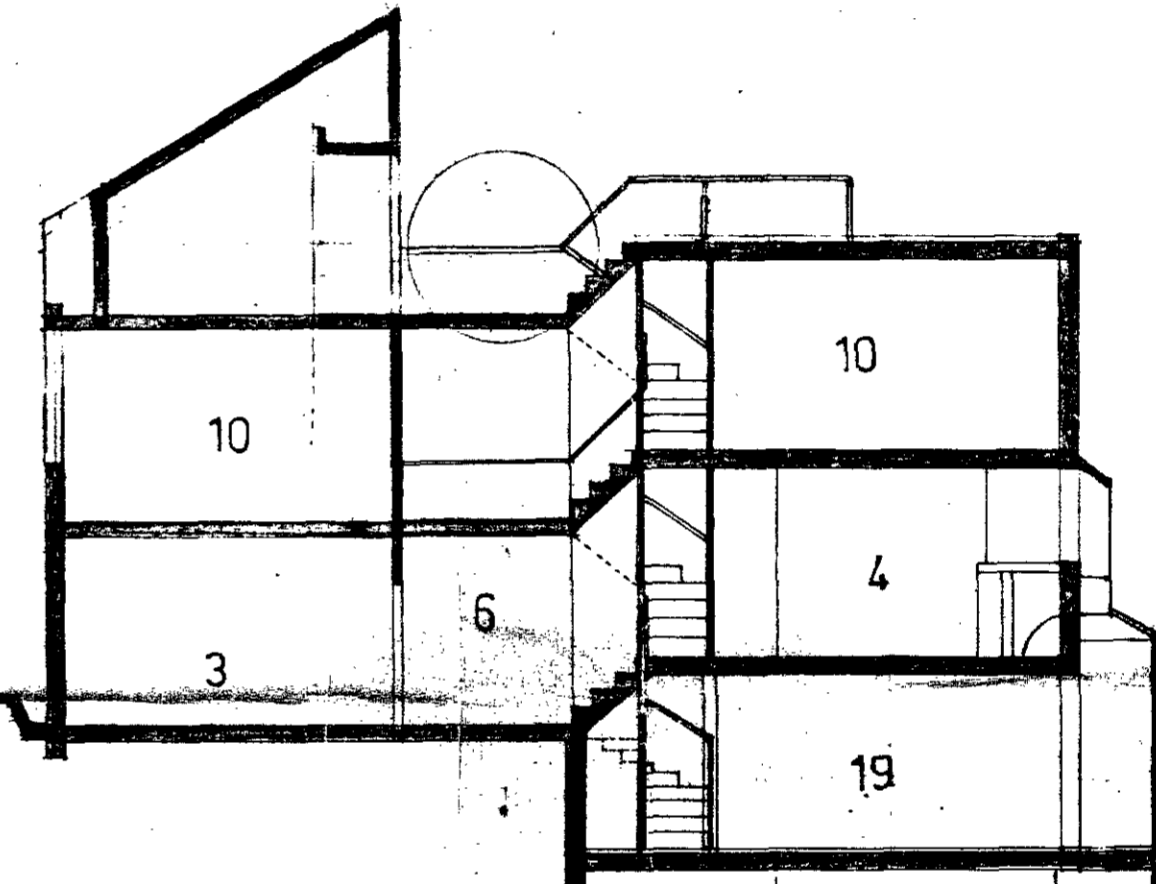
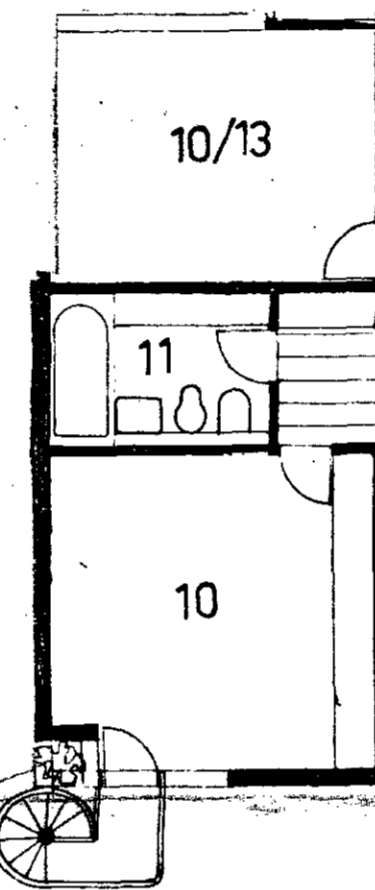
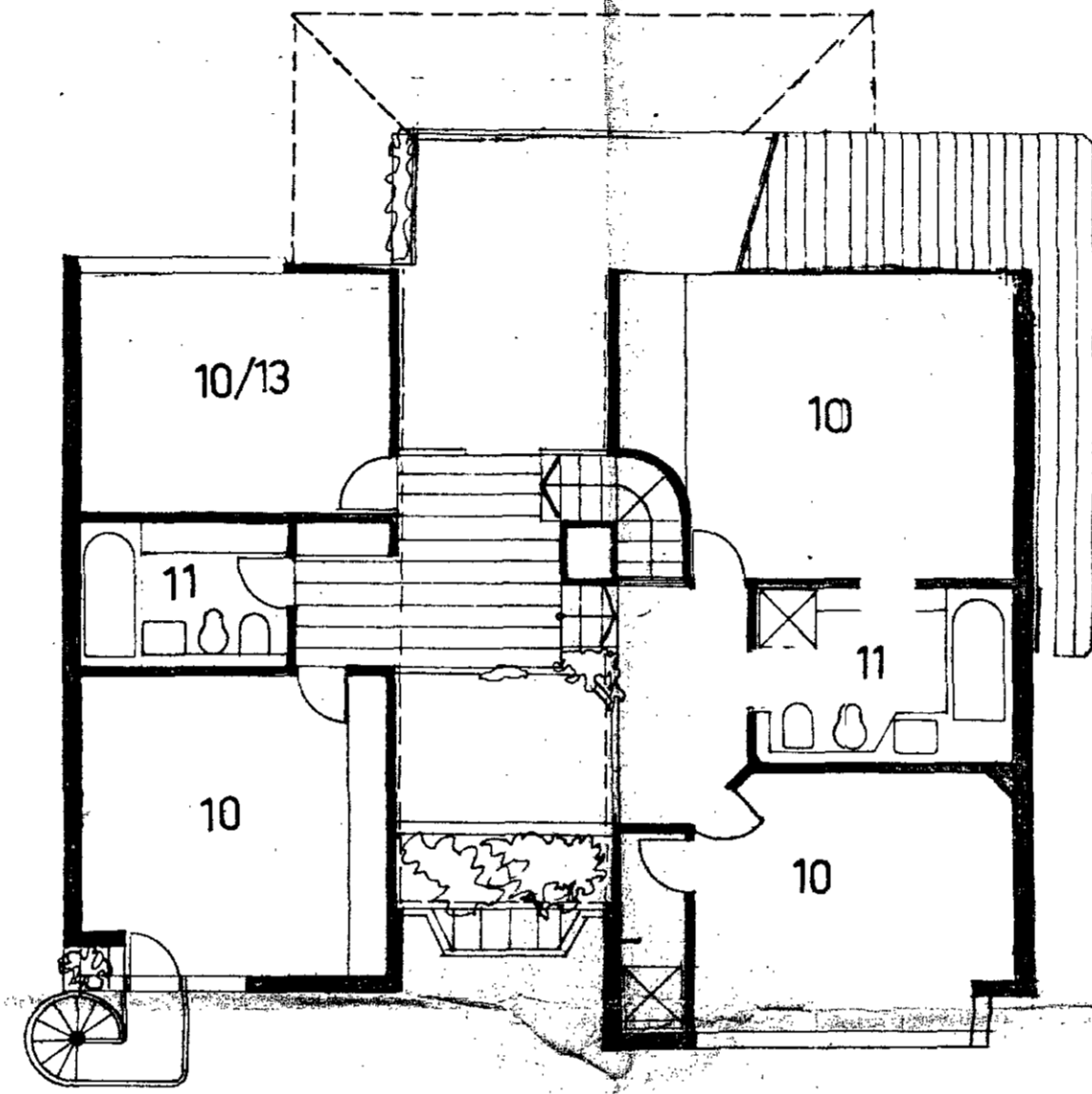
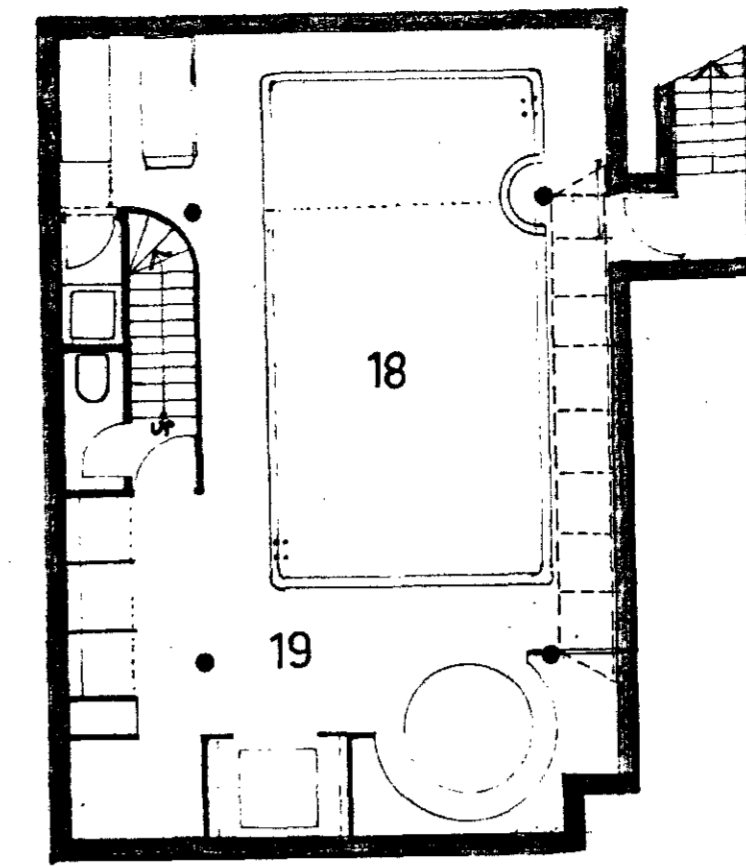
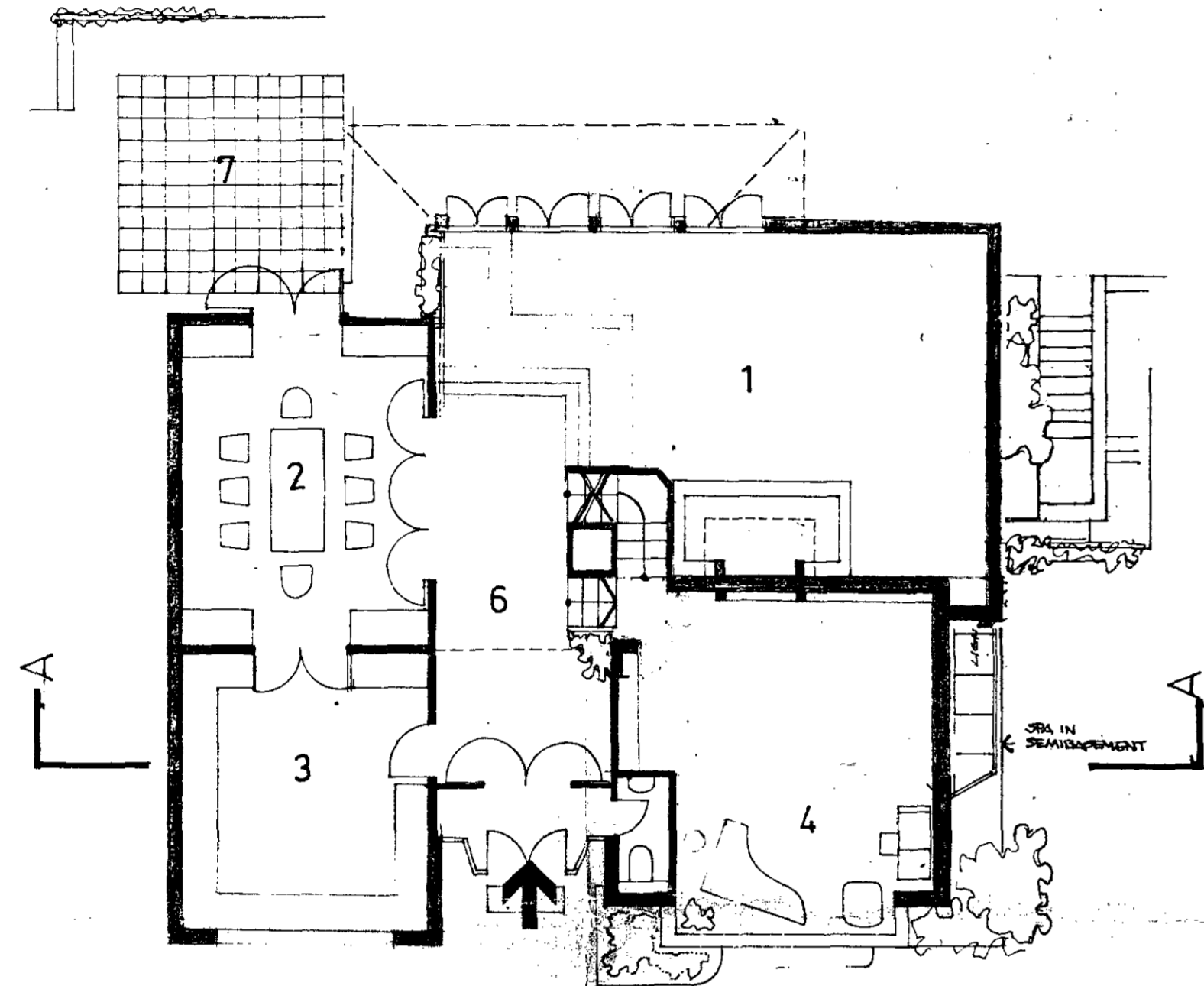


D+

1 : 1000

SP51

- 1 LIVING
- 2 DINING
- 3 KITCHEN
- 4 STUDY
- 5 TOILETS (ALTERNATIVE POSITIONS)
- 6 HALL
- 7 PATIO
- 8 ORN. GDN.
- 9 ALTERNATIVE ENTRANCES
- 10 BEDROOM
- 11 BATHROOM
- 12 DRESSING
- 13 STUDIO
- 14 SHOWER
- 15 UTILITY
- 16 GARAGE
- 17 CAR PORT (SOME HOUSES)
- 18 POOL
- 19 SPA FACILITIES



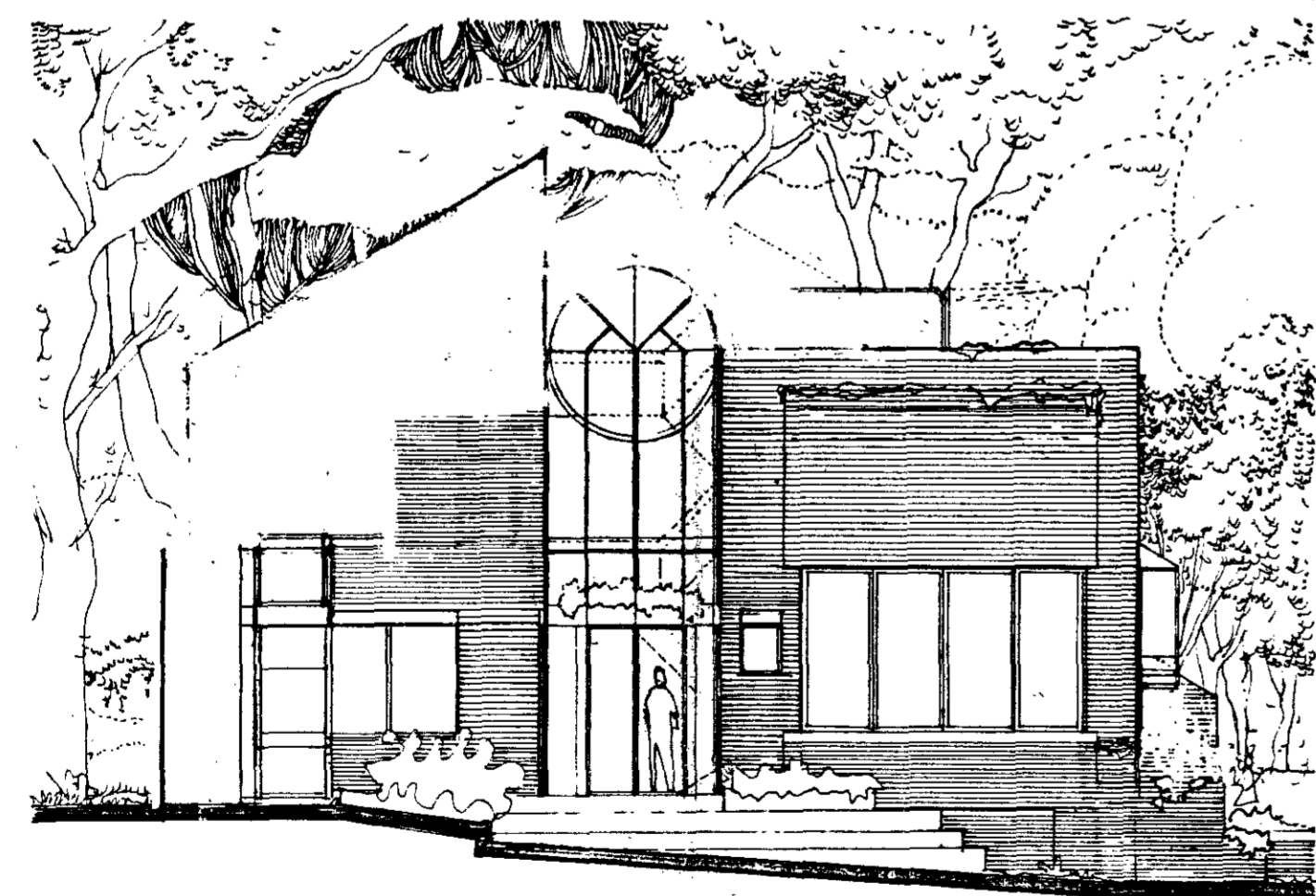
LONDON BOROUGH OF CAMDEN
TOWN AND COUNTRY PLANNING ACTS
6 APR 1982
PLANS APPROVED
ON BEHALF OF THE COUNCIL

⊖

II

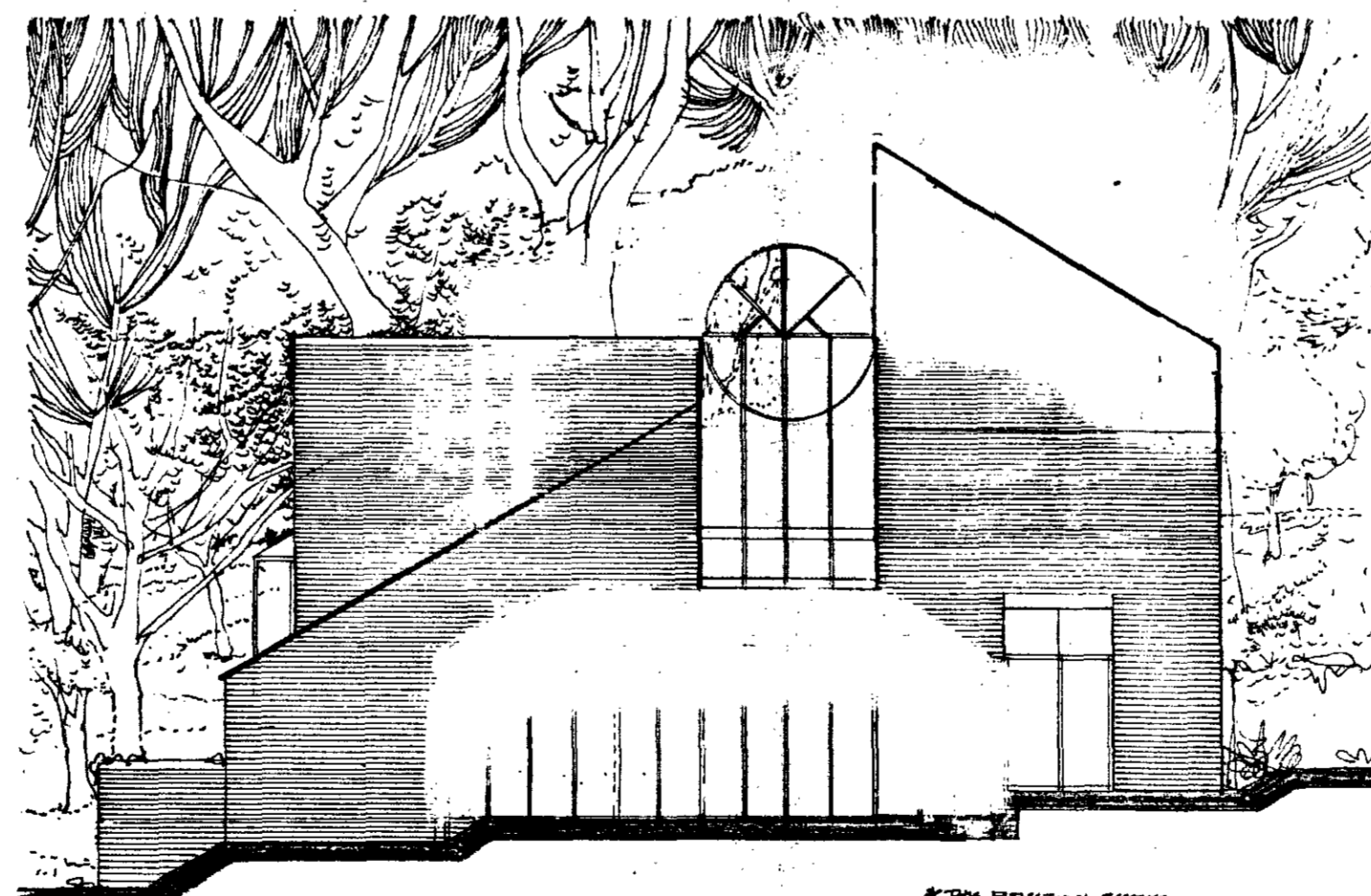
A-A

* TOP OF HALL WILL BE
A GLASSED INDOOR PLANT
RIV ILLUSTRATED HERE.



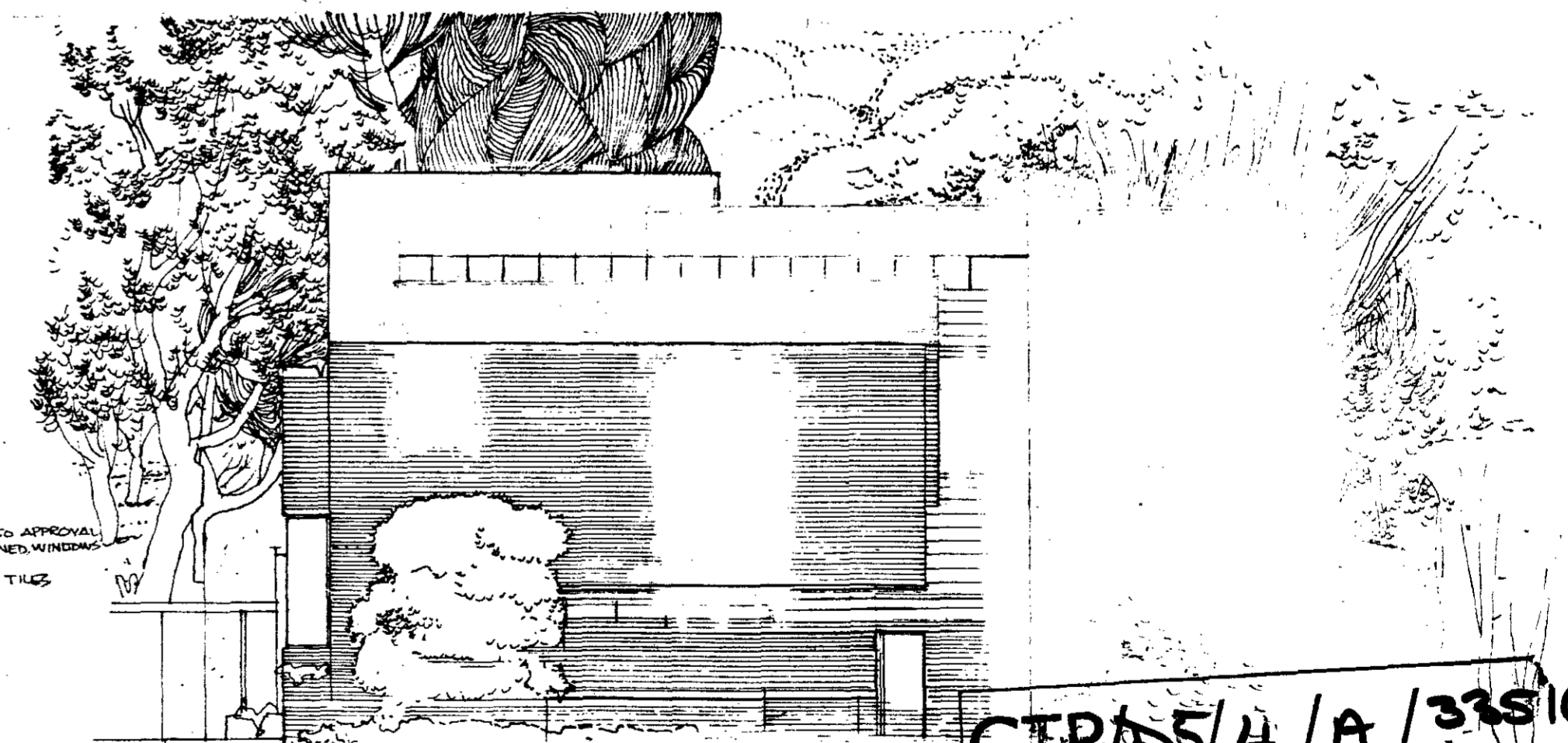
FRONT

Welby 10/2/82



GARDEN

* THIS ELEVATION SHOWS
ONE OPTIONAL PORCH



SIDE

* FACING BRICK TO APPROVAL
* HARDWOOD STAINED WINDOWS
AND DOORS
* FLAT CONCRETE TILES

CTR/AS/4/A/32510(R3)

LONDON BOROUGH OF CAMDEN
TOWN AND COUNTRY PLANNING ACTS
6 APR 1982
RECOMMENDATION AGREED
ON BEHALF OF THE COUNCIL

SPEDAN TOWER
BUKHATIR INVESTMENTS LTD

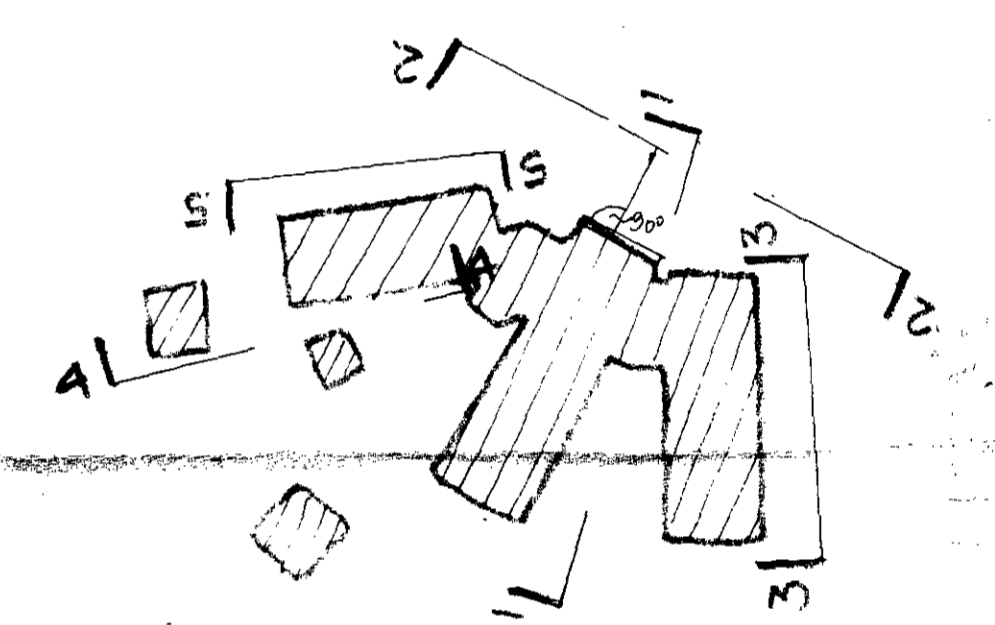
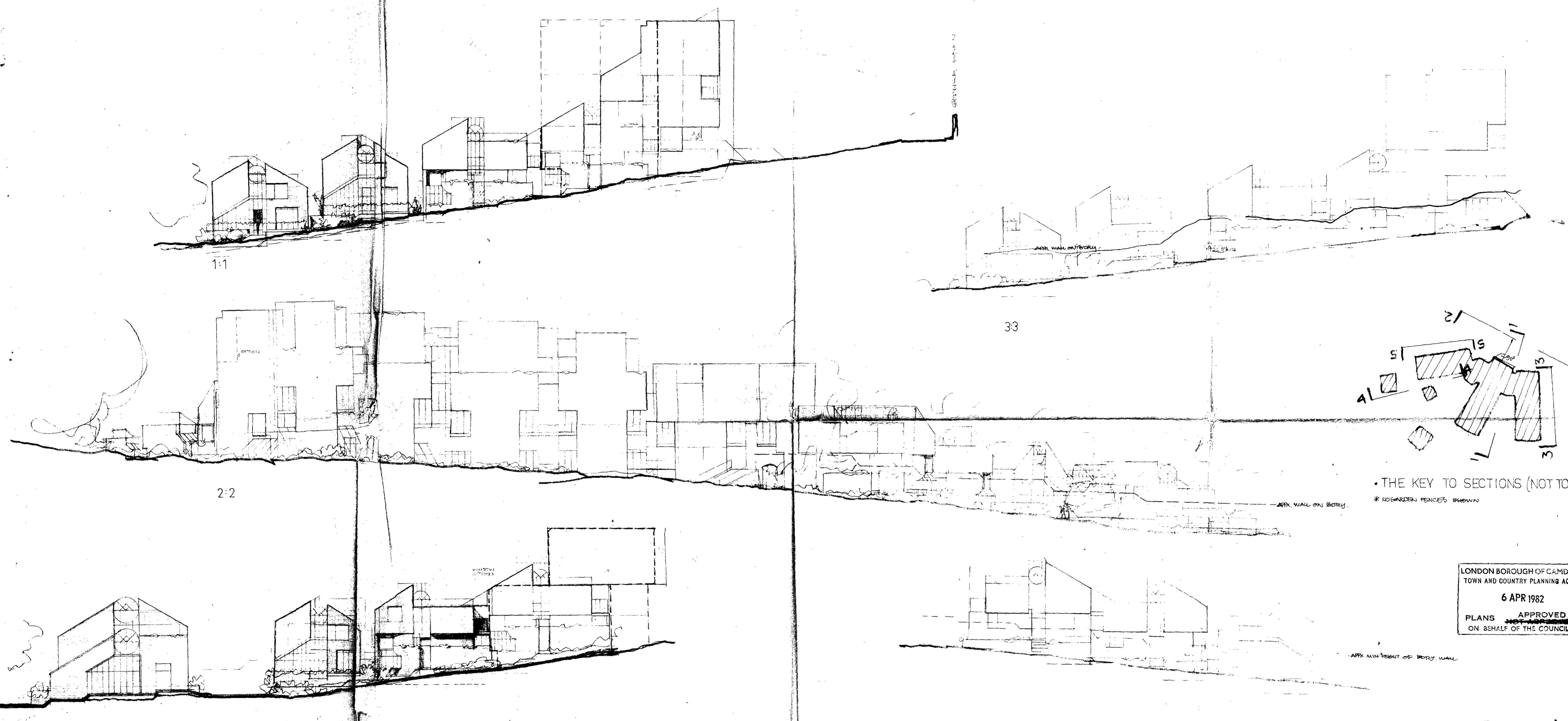
© 1981

IVAN SIMOVIC-RIBA-DIP PLAN (AA)
Chartered Architects
13 The Chase London N10 3PX 01 883 8588

ELEVATIONS

1 : 200

SPS M



THE KEY TO SECTIONS (NOT TO SCALE)
* NO GARDEN FENCES SHOWN

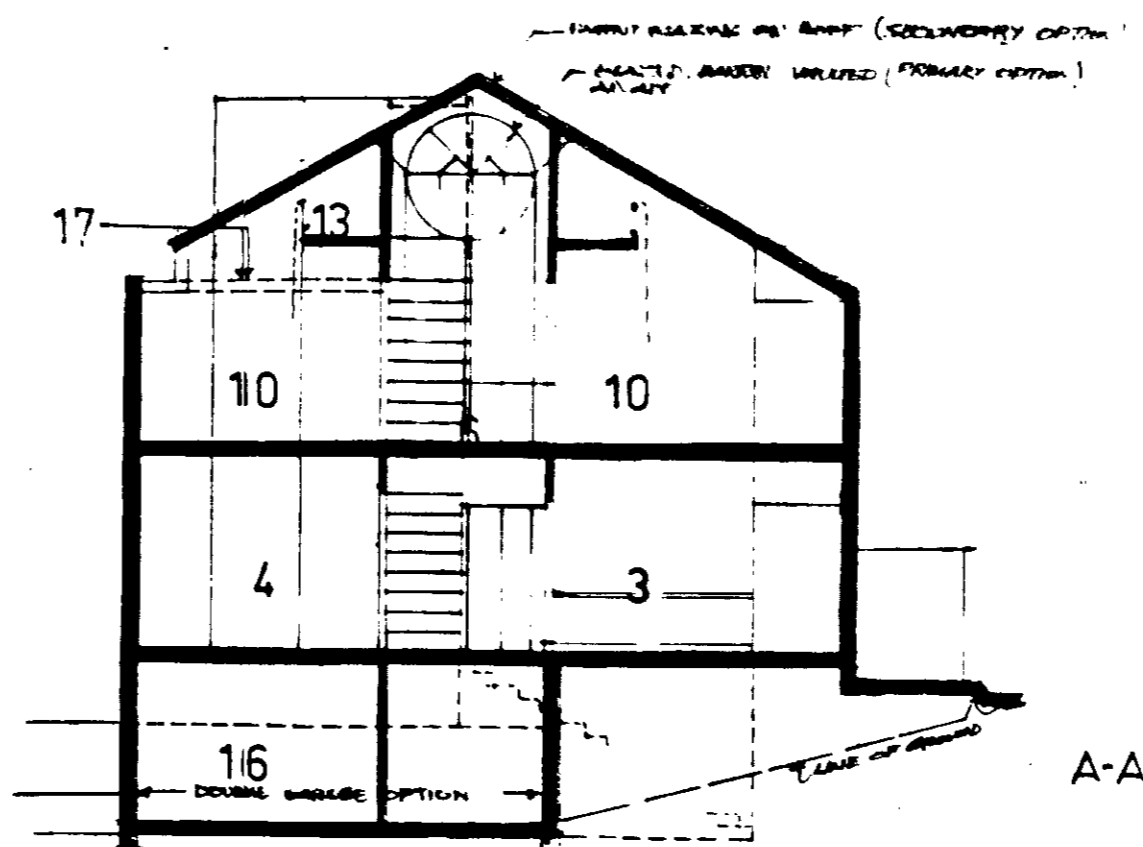
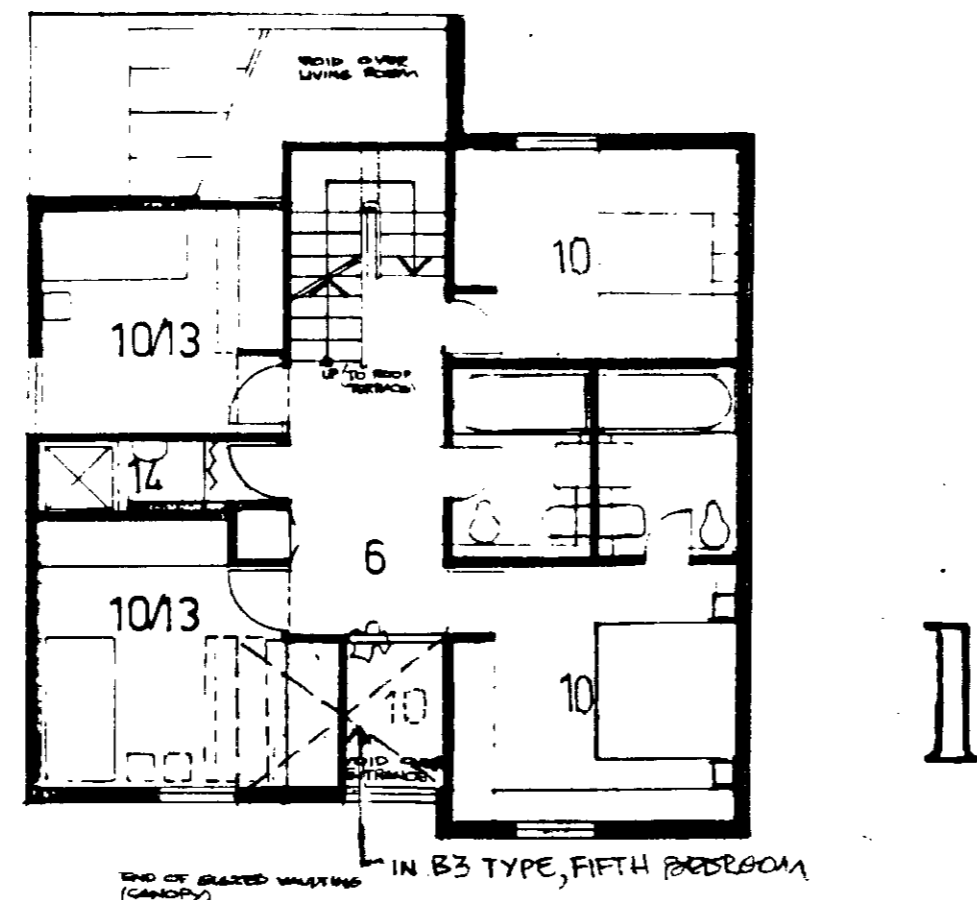
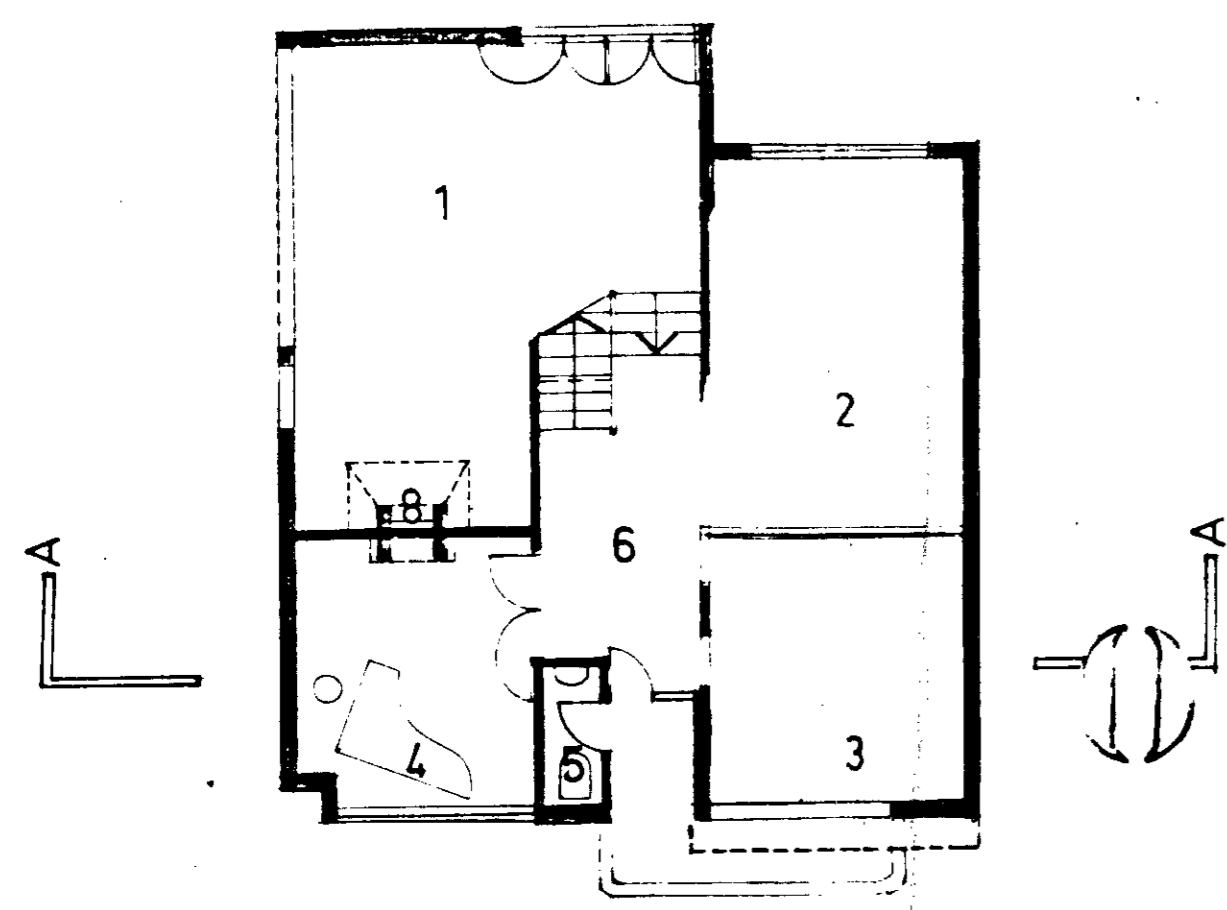
LONDON BOROUGH OF CAMDEN
TOWN AND COUNTRY PLANNING ACTS
6 APR 1982
PLANS APPROVED
ON BEHALF OF THE COUNCIL

CTP/DS/4/A/33510(R3)

SPEDAN TOWER
BUKHATIR INVESTMENTS LTD
BICKERDIKE ALLEN SIMOVIC ARCHITECTS

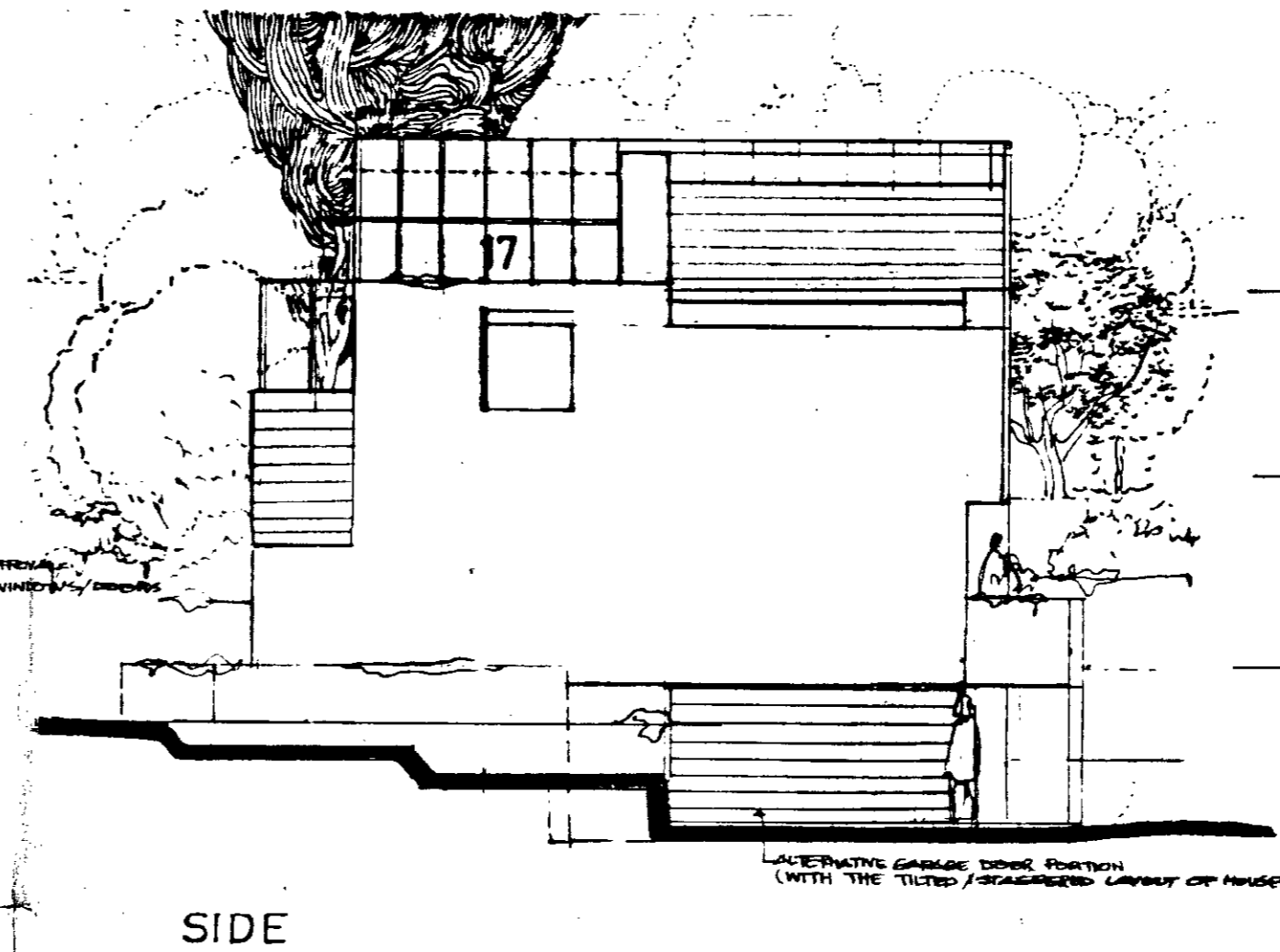
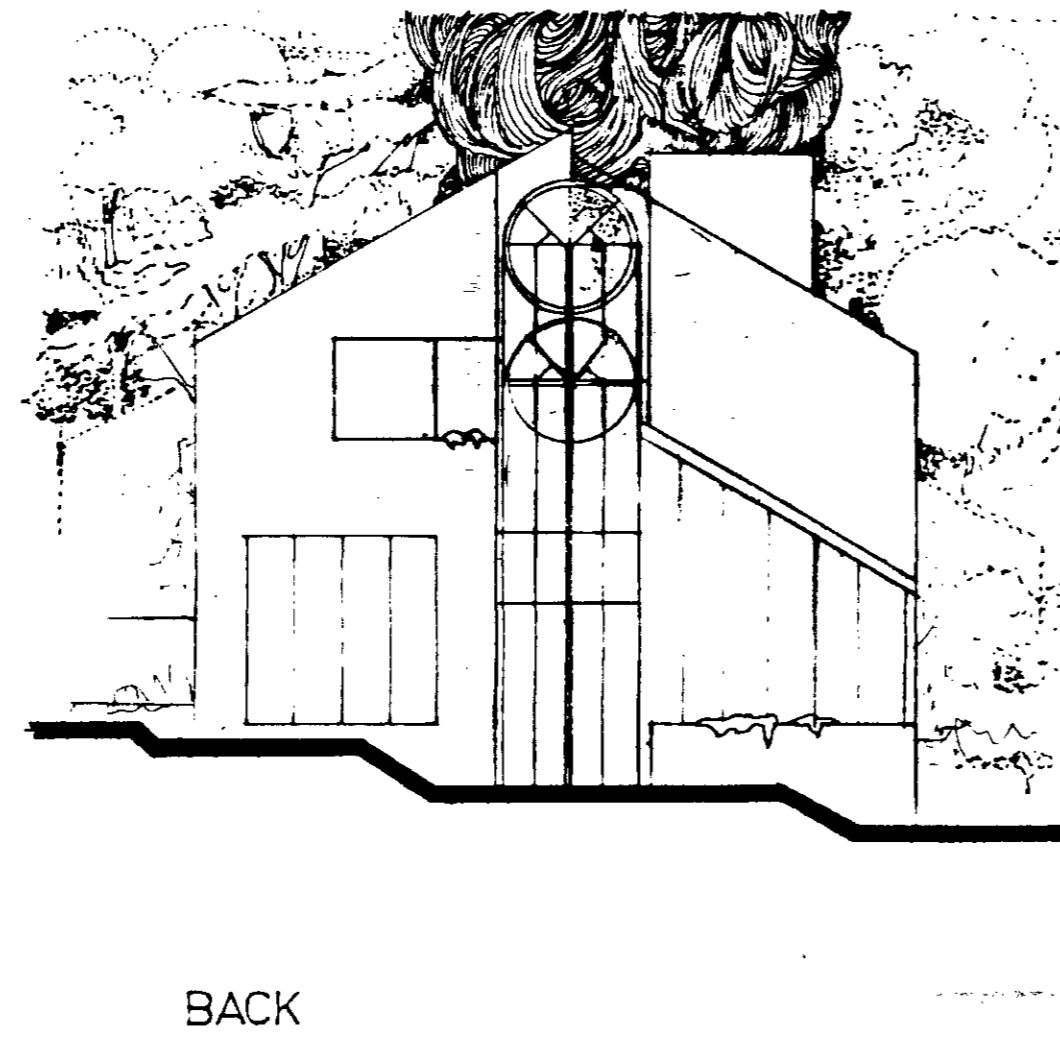
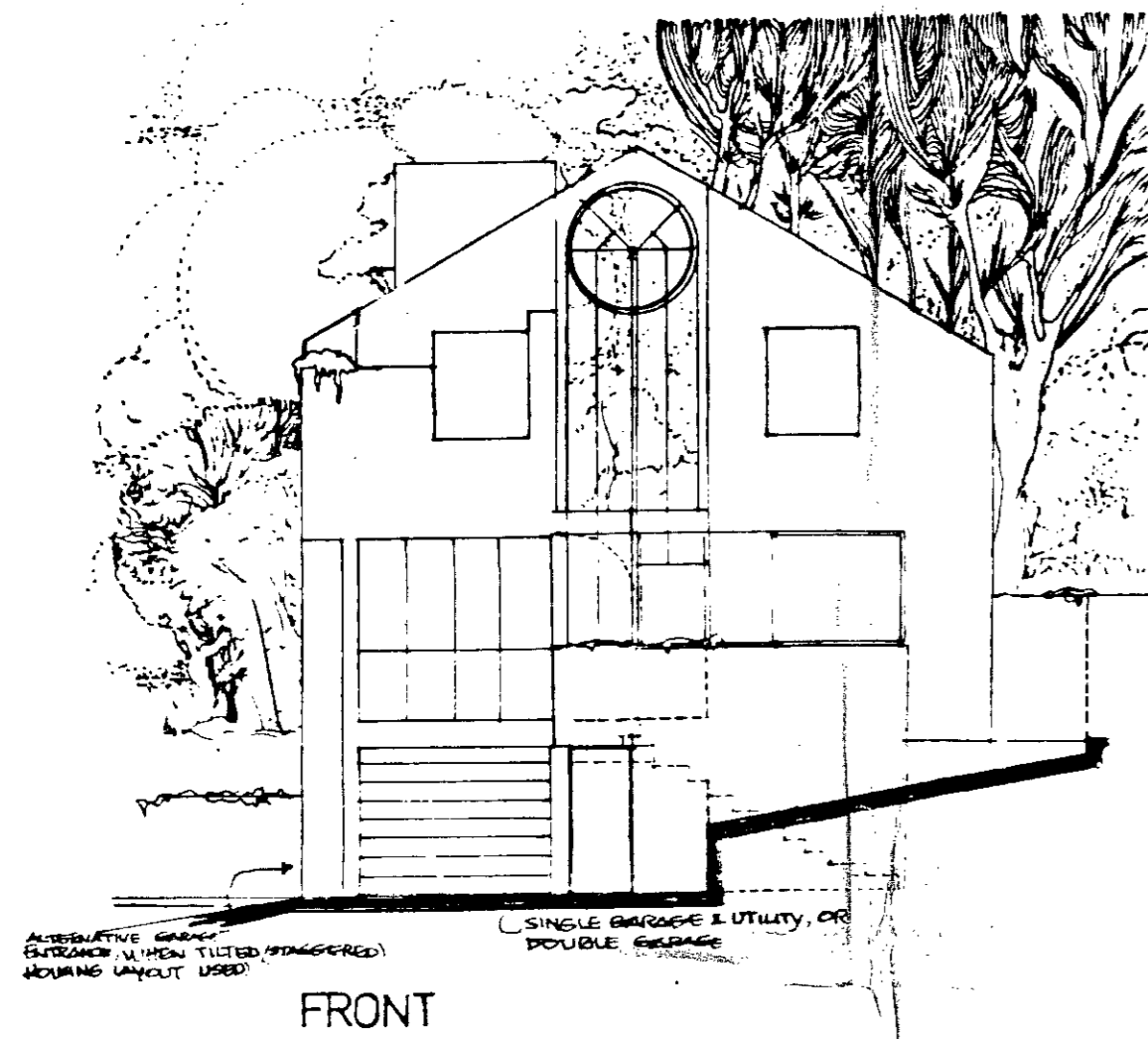
© 1982
IVAN SIMOVIC · RIBA · DIP PLAN (AA)
Chartered Architect
13 The Chine London N10 3PX 01 883 9568

SP 7/F1



B1 1 : 100

* B3 TYPE CONTAINS THE FIFTH BEDROOM AS SHOWN IN PLAN 1.

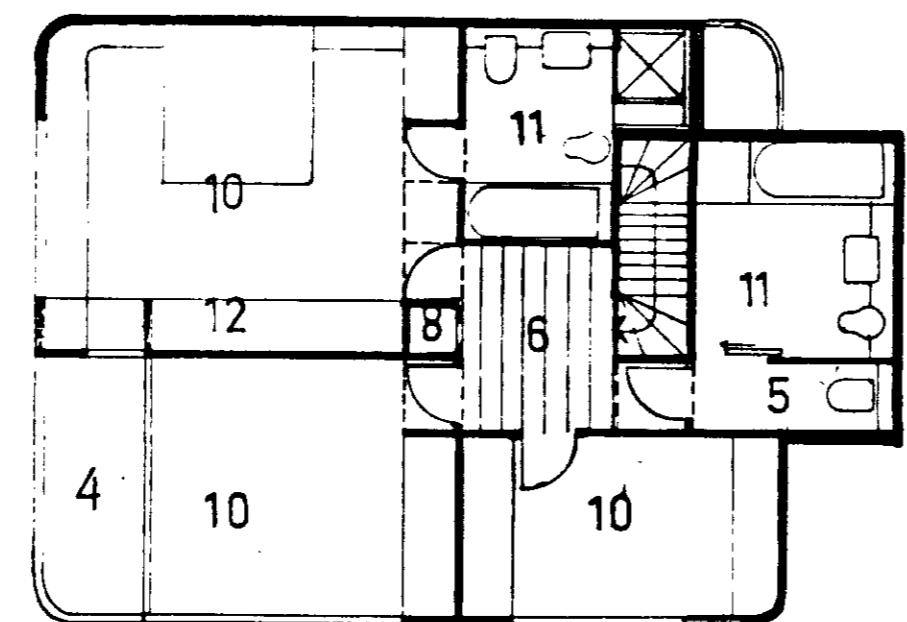
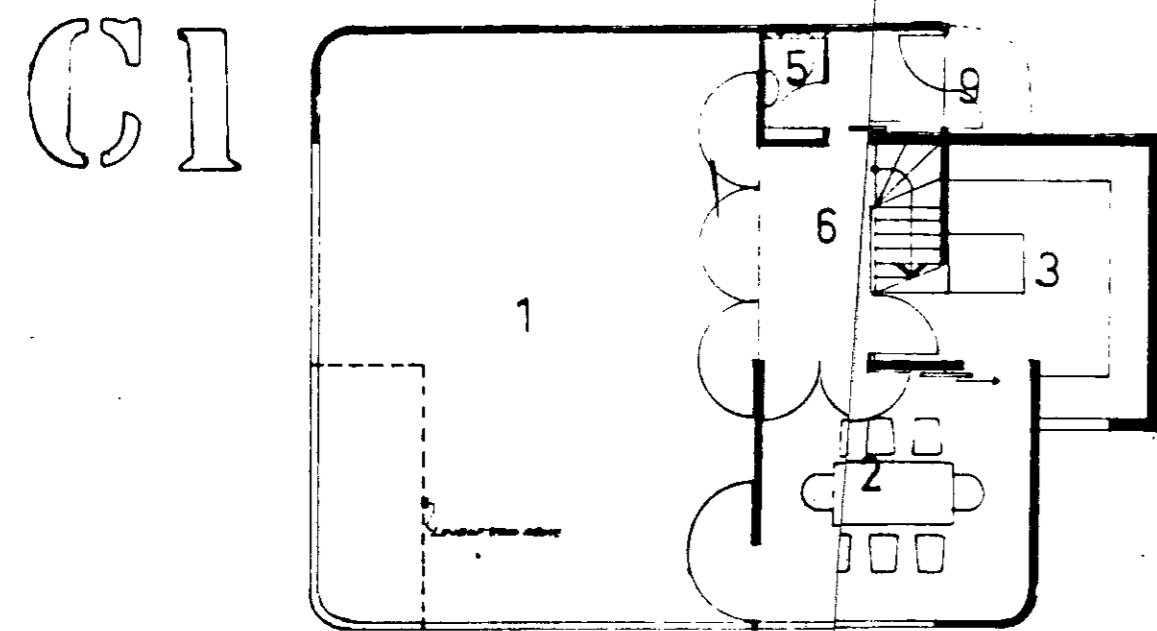


FRONT

BACK

SIDE

- 1 LIVING
- 2 DINING
- 3 KITCHEN
- 4 STUDY
- 5 TOILET
- 6 HALL
- 7 LOBBY
- 8 FIRE PLACE
- 9 ENTRY/TERRACE
- 10 BEDROOM
- 11 BATHROOM
- 12 DRESSING
- 13 STUDIO/BUNKS
- 14 SHOWER
- 15 UTILITY
- 16 GARAGE
- 17 ROOF TERRACE



- 1 LIVING
- 2 DINING
- 3 KITCHEN
- 4 TERRACE
- 5 TOILET
- 6 HALL
- 7 GALLERY
- 8 CUPBOARD
- 9 ENTRY
- 10 BEDROOM
- 11 BATHROOM
- 12 DRESSING

1 : 100

• DUPLEX FLATS

LONDON BOROUGH OF CAMDEN
TOWN AND COUNTRY PLANNING ACTS
6 APR 1982
APPROVED
PLANS NOT APPROVED
ON BEHALF OF THE COUNCIL

CTP/DS/4/A/33510(R3)

* Ream 1/1 in type B3, fifth bedroom added, 5/3/82 JS
* Ream 1/2, flats C: balconies added, 11/9/82 JS.

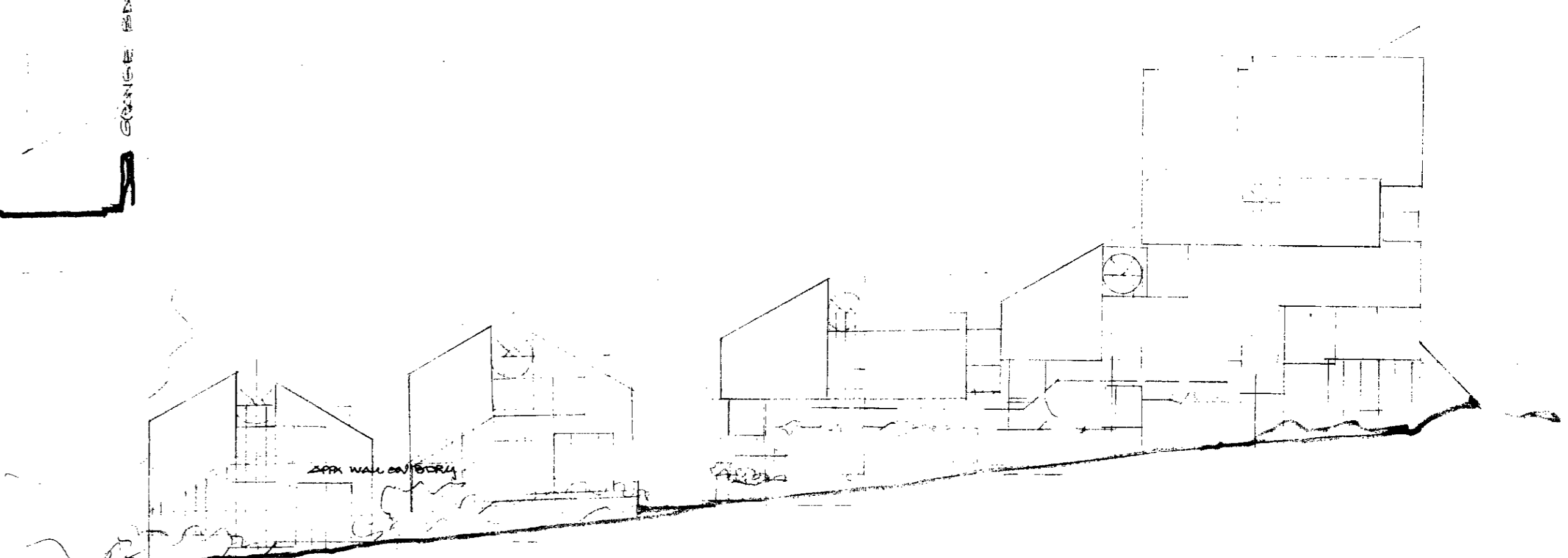
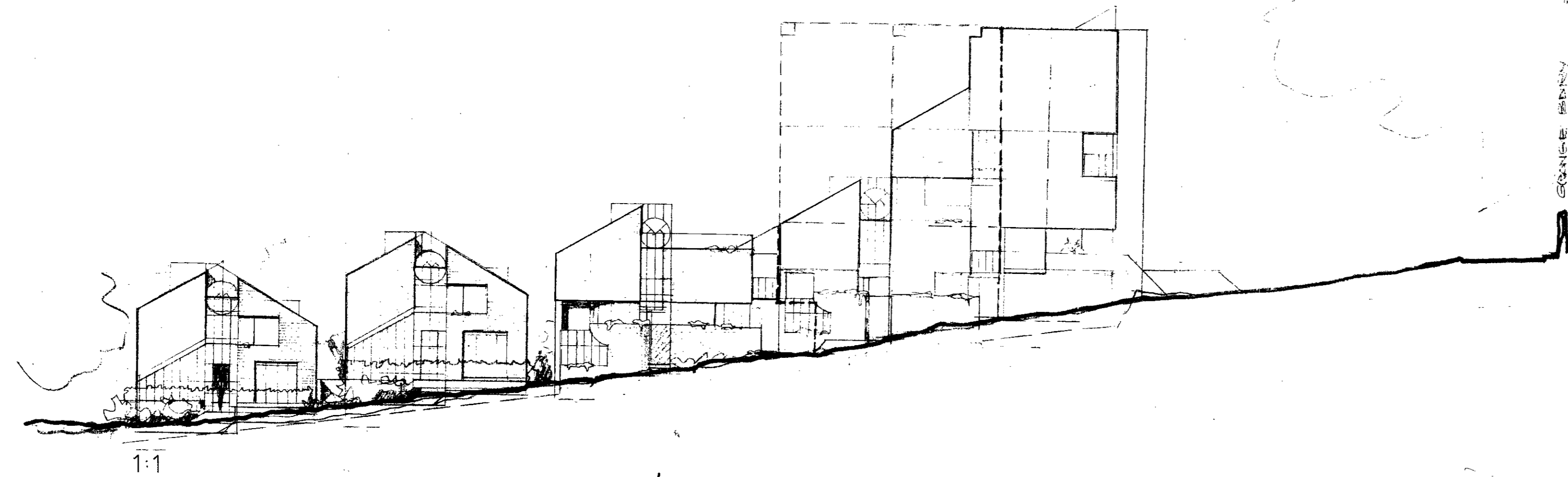
• SPEDAN TOWER
BUKHATIR INVESTMENTS LTD.
BICKERDIKE ALLEN SIMOVIC ARCHITECTS

© 1981
IVAN SIMOVIC RIBA DIP PLAN IAN
Chartered Architect
13 The Chase London N10 3PX 0 883 8558

ELEVATIONS

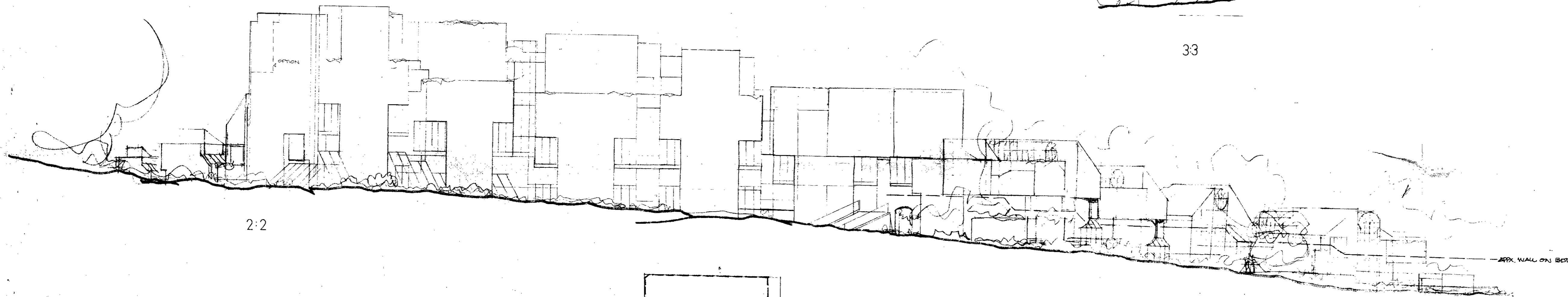
1 : 200

SPS M

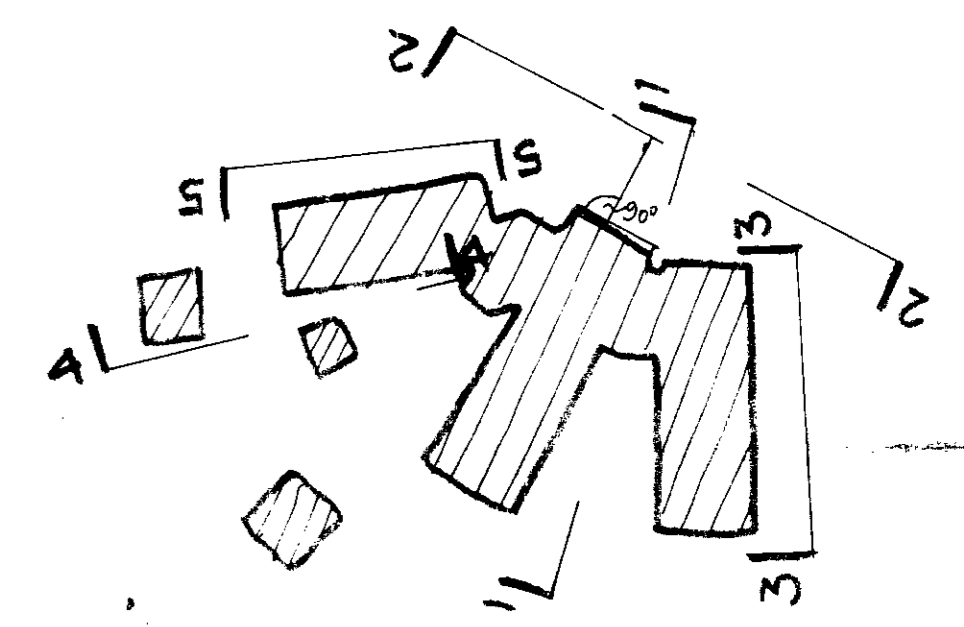


1:1

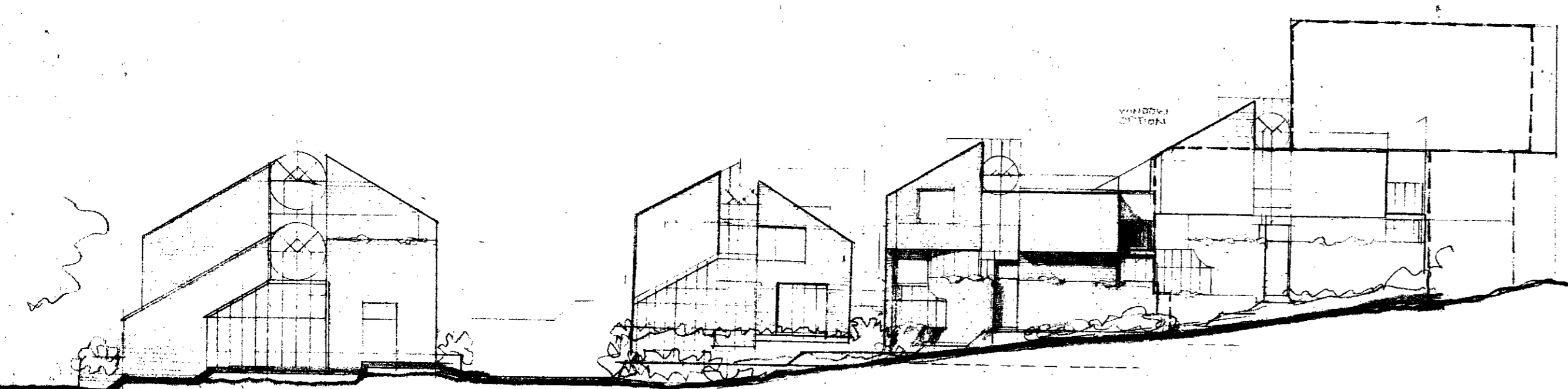
3:3



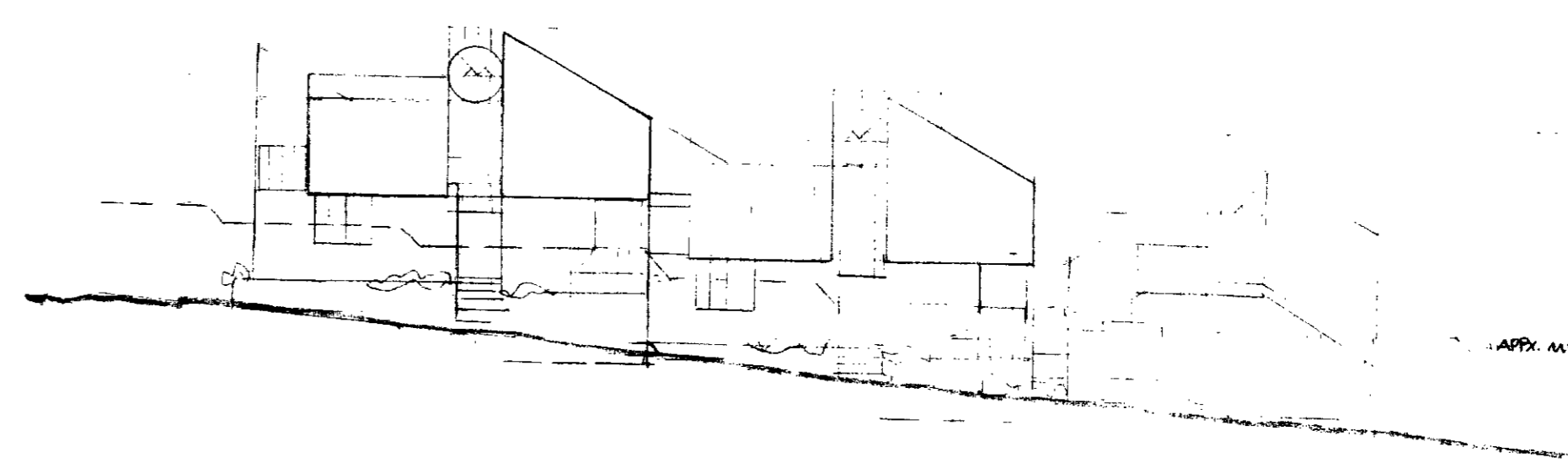
2:2



• THE KEY TO SECTIONS (NOT TO SCALE)
* NO GARDEN FENCES SHOWN



4:4



5:5

• SPEDAN TOWER
BUKHATIR INVESTMENTS LTD
BICKERDIKE ALLEN SIMOVIC ARCHITECTS

© 1982
IVAN SIMOVIC RIBA DIP PLAN (AA)
Chartered Architect
13 The Chine London N10 3PX 01 883 9568



1 : 200

LOCATION PLAN 1:1250

SCHEDULE OF ACCOMMODATION

Nos	12	C	flat	60	hrs.
	14	C1	flat	70	"
	6	B	(6) ho	36	
	6B	4B3	(7+8) ho	74	
	6	B2	(5) flat	30	
	2	D+	(10) ho	20	
	50 units				290hrs.

- BORDERLINE TREES
- EXISTING TREES
- NEW TREES
- ▲ PERSPECTIVE SKETCH VIEWS

* OPEN SPACE/GARDEN TO BE STUDIED SEPARATELY

BLOCK PLAN LAYOUT

* SPEDAN TOWER
BUKHATIR INVESTMENTS LTD.
BICKERDIKE ALLEN SIMOVIC ARCHITECTS

© 1982
IVAN SIMOVIC - RIBA DIP PLAN (AW)
Chartered Architect
43 The Chase London N10 3PX 01 660 9555



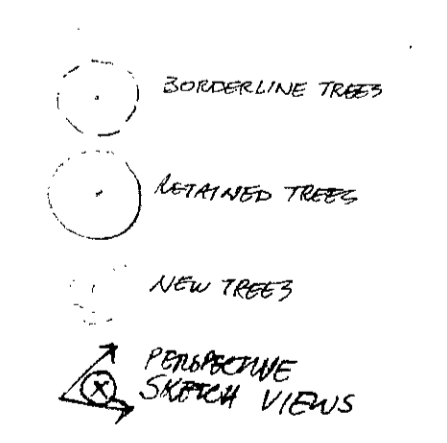
* OPEN SPACE/GARDEN
TO BE STUDIED SEPARATELY

LOCATION PLAN 1:1250

1:200

SCHEDULE OF ACCOMMODATION

Nos	12	C	flat	60	hms.
	14	C1	flat	70	"
	6	B	(6) ho	36	
	6	B1	(6) ho	74	
	6	B2	(5) flat	30	
	2	D+	(10) ho	20	
	50 units			290hms.	



BLOCK PLAN LAYOUT

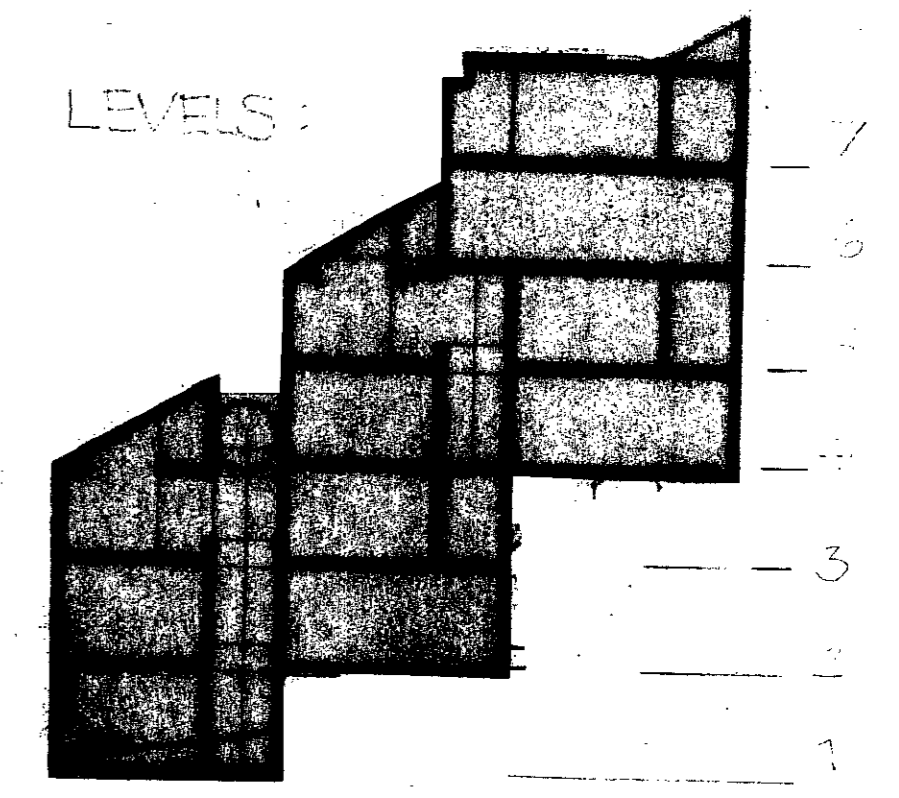
SPEDAN TOWER
BUKHATIR INVESTMENTS LTD.
BICKERDIKE ALLEN SIMOVIC ARCHITECTS

© 1982
IVAN SIMOVIC RIBA-DIP PLAN (AA)
Chartered Architect
13 The Chase London N10 3PX 01 883 8588

LEVEL ①

1:200

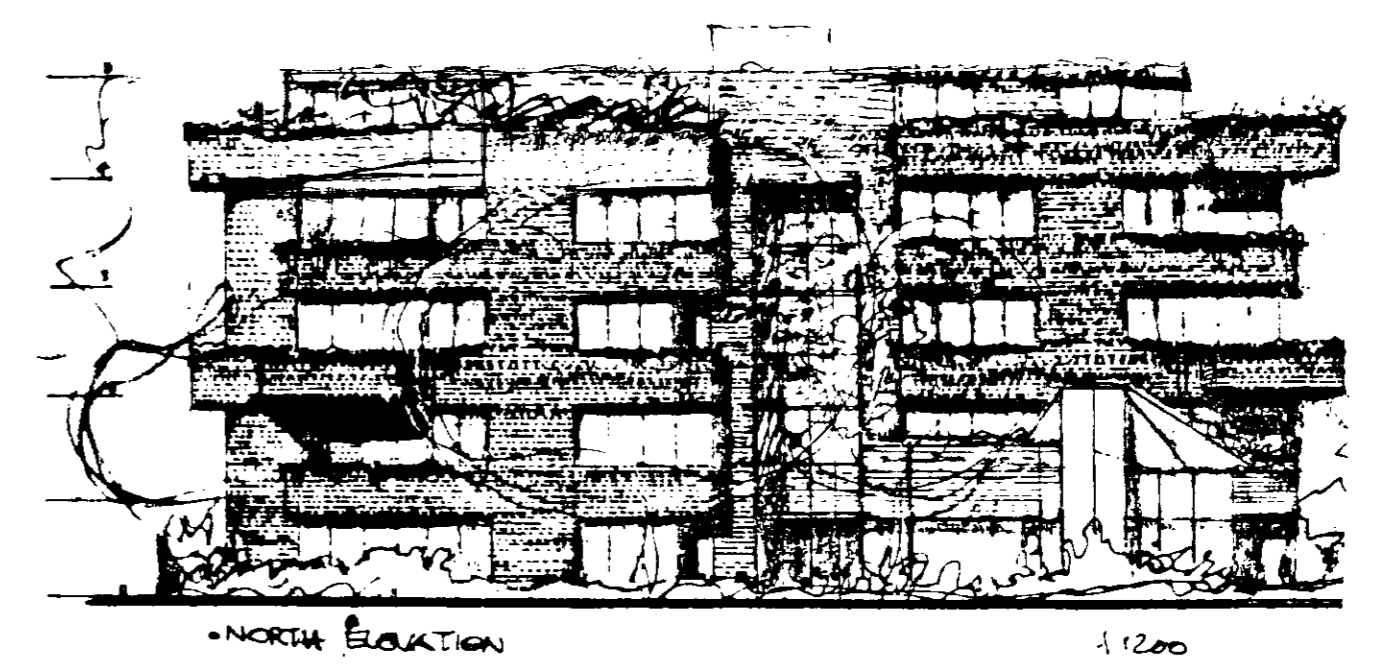
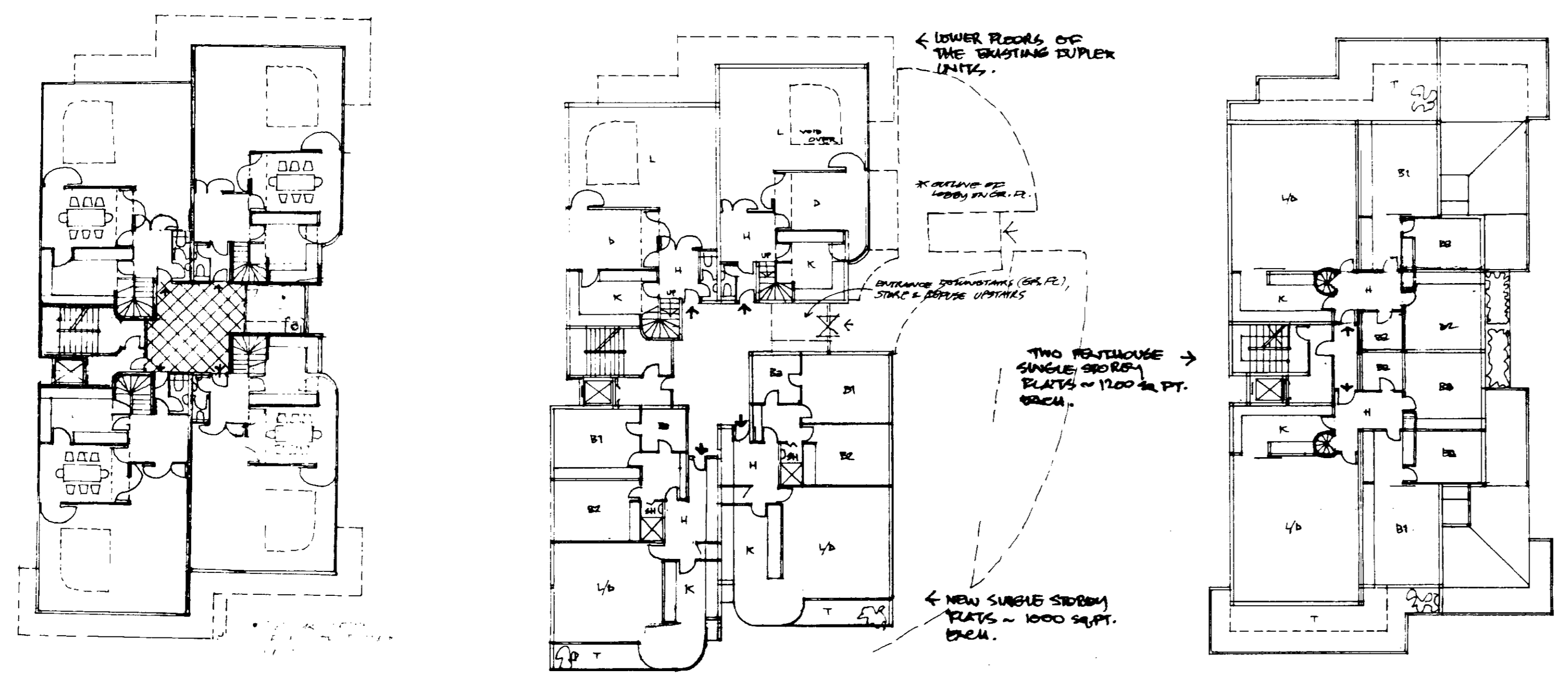
EDFI



SPEDAN TOWER
 BUKHATIR INVESTMENTS LTD.
 BICKERDIKE ALLEN SIMOVIC ARCHITECTS

© 1982
 IVAN SIMOVIC RIBA DIP PLAN (AA)
 Chartered Architect
 13 The Chine London N10 3PX 01 883 9568

SP9F7



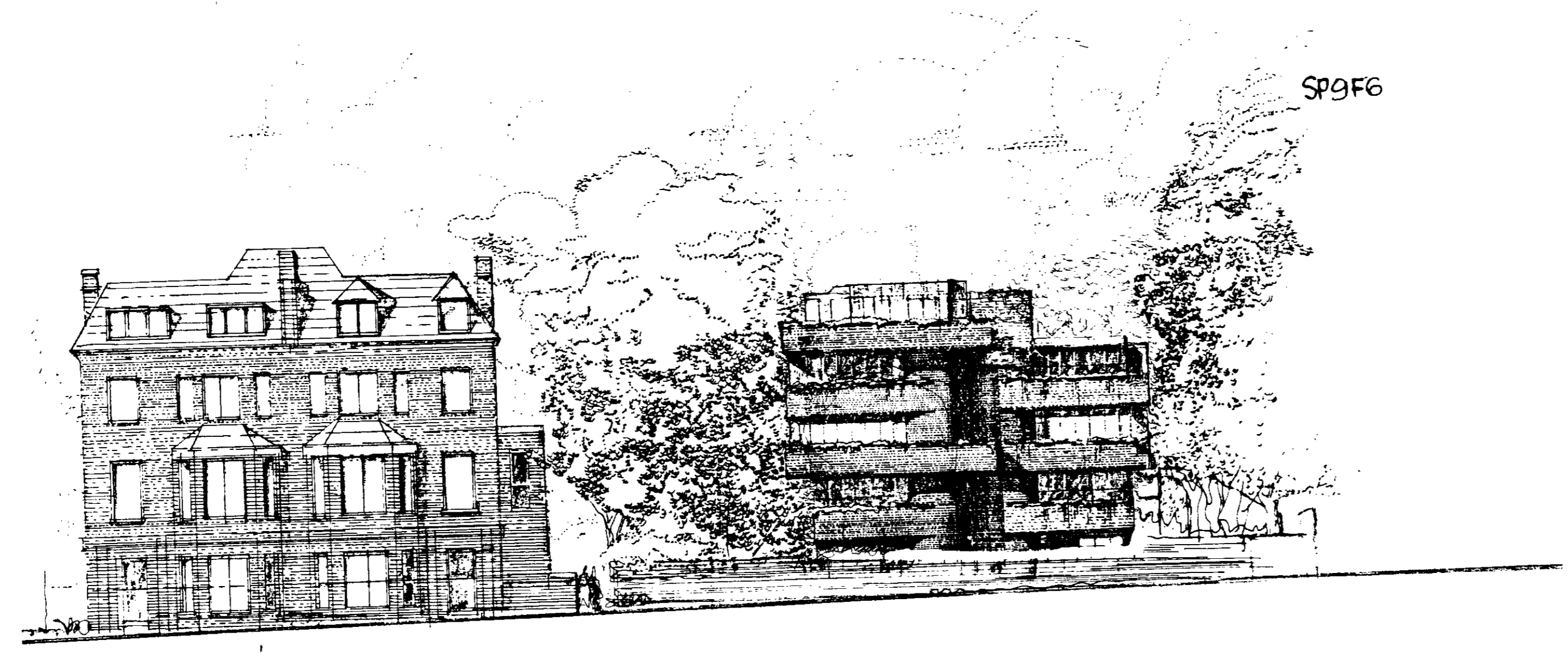
• NORTH ELEVATION

1:200

- BUKHAR INVESTMENTS LTD
- SPEDAN TOWER
- BURKERTKE, ALLEN, SIMOVIC ARCHITECTS

© 1982
 IVAN SIMOVIC - RIBA-DIP PLAN (AA)
 Chartered Architect
 13 The Chine London N10 3PX

SP9F6

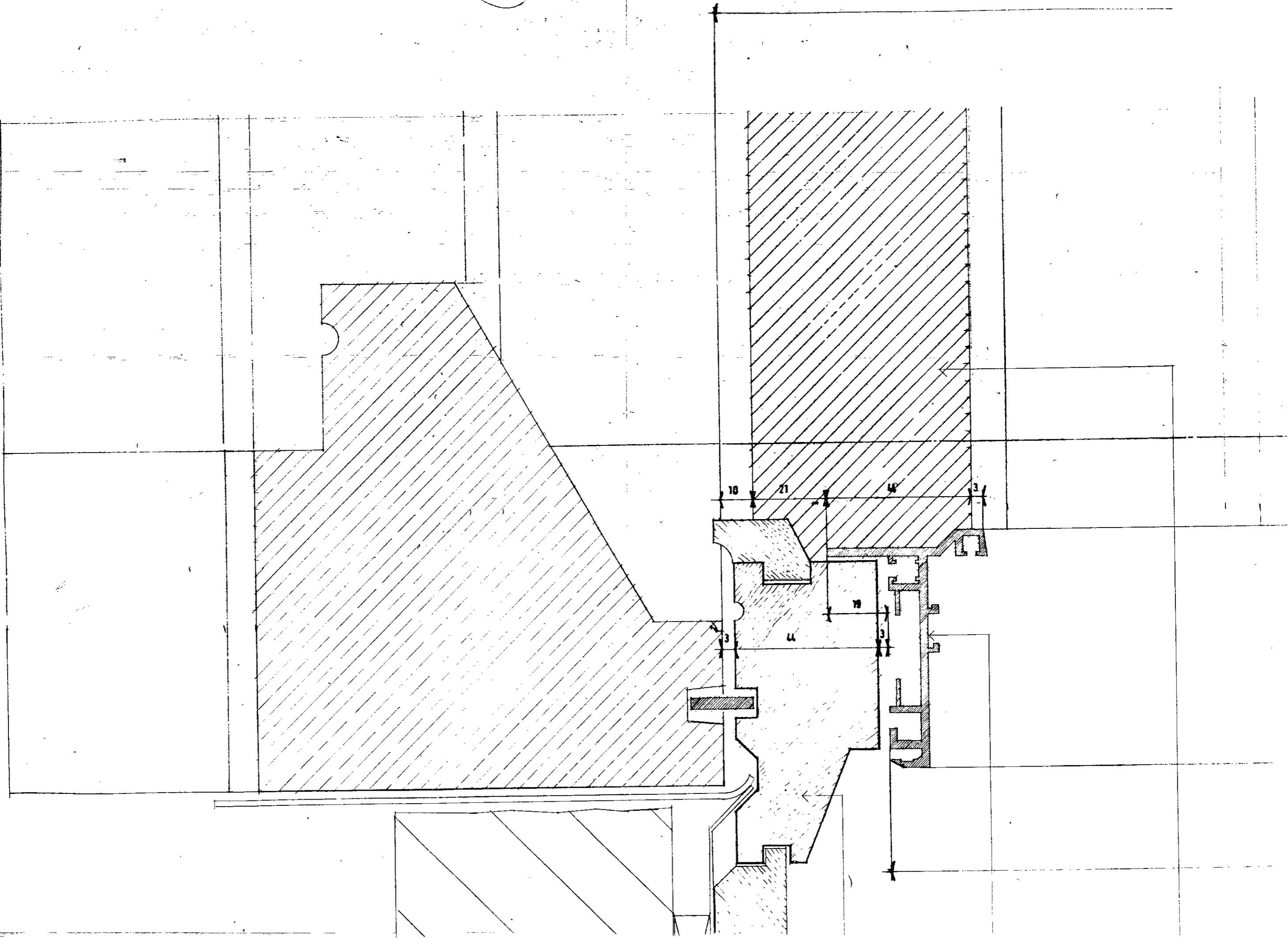


• EAST ELEVATION / WEST HEATH ROAD 1:200

- BUKHAR INVESTMENTS LTD
- SPEDAN TOWER
- BURKERTKE, ALLEN, SIMOVIC ARCHITECTS

© 1982
 IVAN SIMOVIC - RIBA-DIP PLAN (AA)
 Chartered Architect
 13 The Chine London N10 3PX

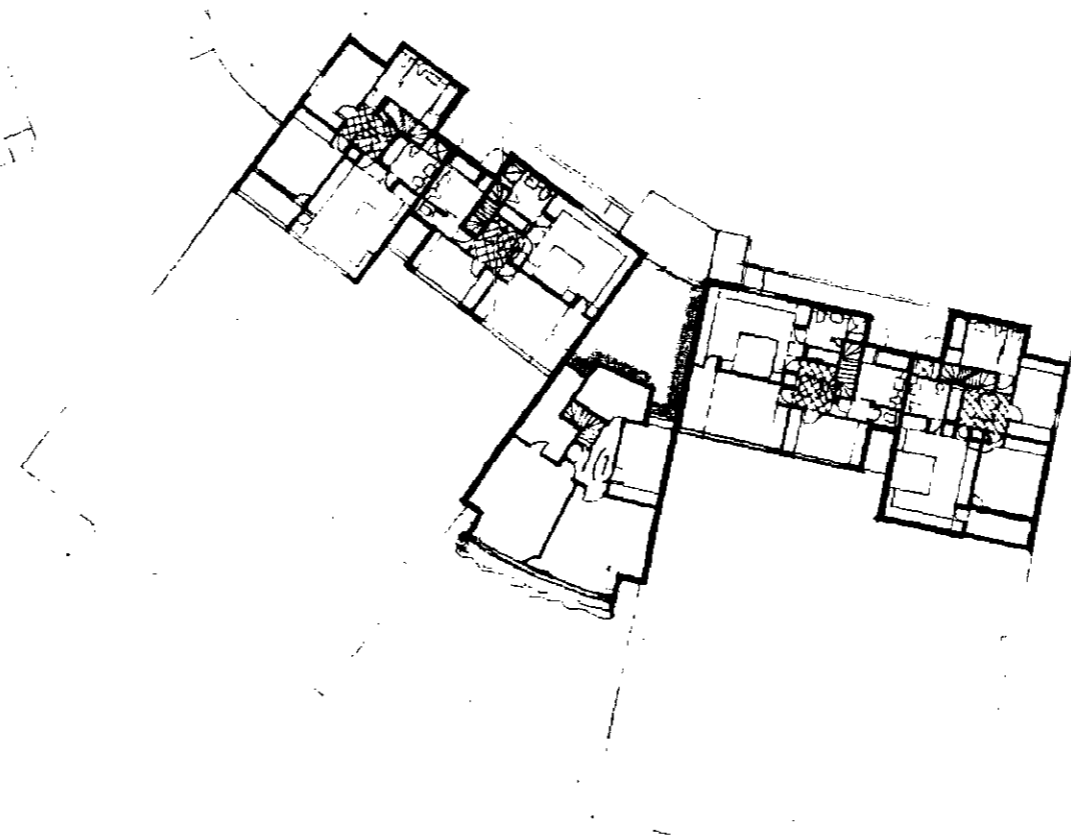
CTP/DS/4/A/33510(R3)



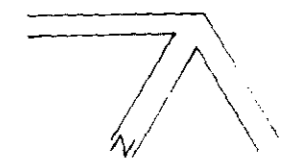
LEVEL ⑦

ED
ED R7

LONDON BOROUGH OF CAMDEN
TOWN AND COUNTRY PLANNING ACTS
6 APR 1982
PLANS ~~NOT APPROVED~~ APPROVED
ON BEHALF OF THE COUNCIL



* ALTERNATIVE LAYOUT



CTP/35/4/A/33510(R3)

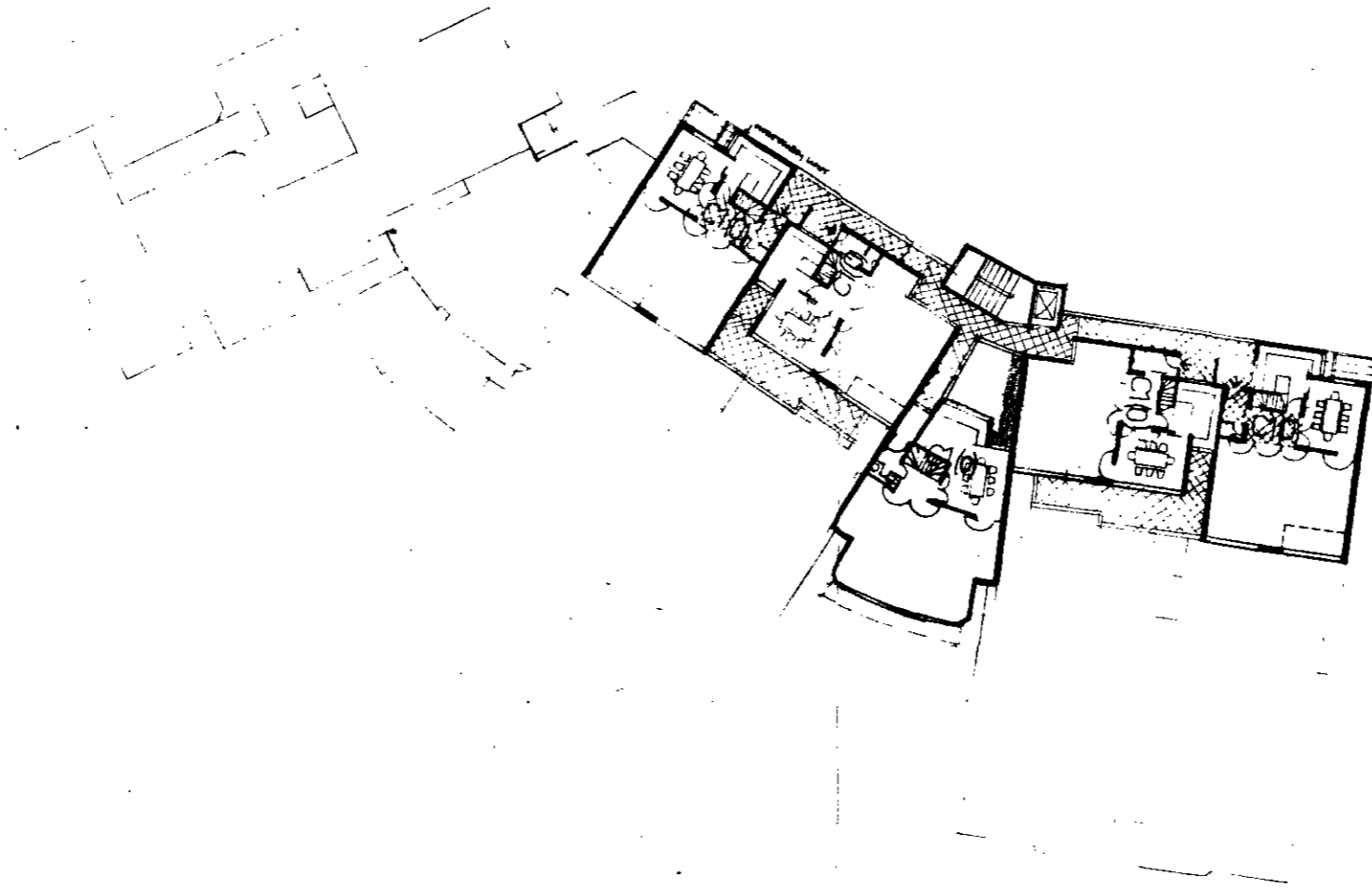
SPEDAN TOWER
BUKHATIR INVESTMENTS LTD.
BICKERDIKE ALLEN SIMOVIC ARCHITECTS

(C) 1981
Ivan Simovic - RIBA - RIA PLANER
Registered Architect
19 The Grove London N50 8BX 01 222 2555

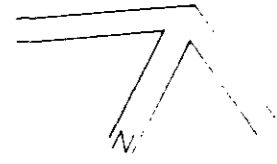
LEVEL ⑥

EDFB

LONDON BOROUGH OF CAMDEN
 TOWN AND COUNTRY PLANNING ACTS
 6 APR 1982
 PLANS ~~APPROVED~~ APPROVED
 ON BEHALF OF THE COUNCIL



* ALTERNATIVE LAYOUT



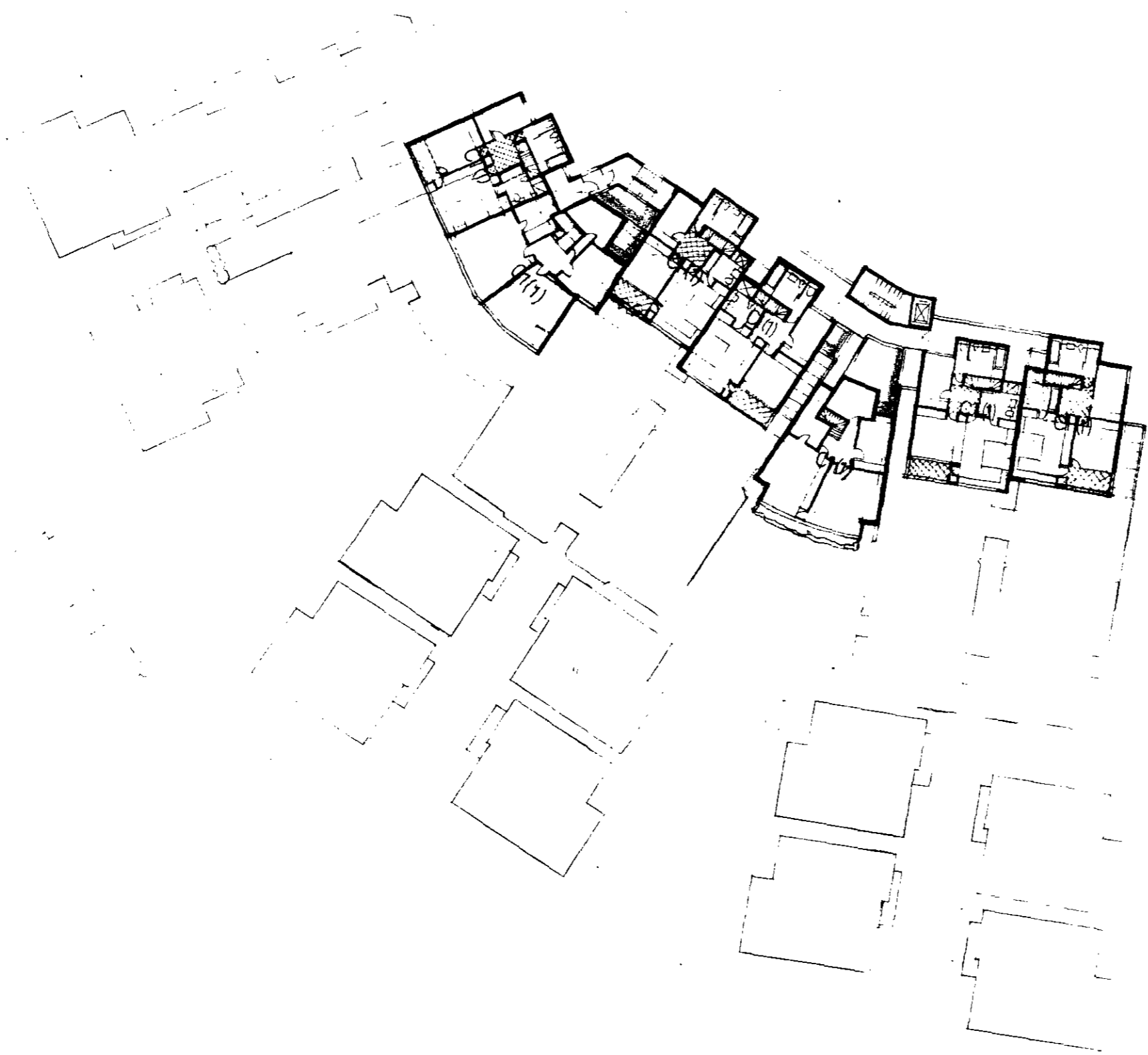
CTP/DS/4/A/33510(R3)

SPEDAN TOWER
 BUKHATIR INVESTMENTS LTD
 BICKERDIKE ALLEN SIMOVIC ARCHITECTS

© 1982 1/400
 IVAN SIMOVIC RIBA DIP PLANING
 Shepherd Architects
 78 The Drive London N10 6PX 01 833 1111

LEVEL ⑤

65
CDF5



LONDON BOROUGH OF CAMDEN
TOWN AND COUNTRY PLANNING ACTS

6 APR 1982

PLANS ~~NOTIFIED~~ APPROVED
ON BEHALF OF THE COUNCIL



LEVEL ⑤: THIS PLAN IS ILLUSTRATING A
LARGER LAYOUT AT A PARTICULAR
LEVEL AND IS BASED ON/DERIVED
ON THE PREVIOUS LAYOUT PLAN
NO. SP/12, WHICH IS THE
APPROX. LAYOUT FOR THE
PURPOSES OF THE APPLICATION.

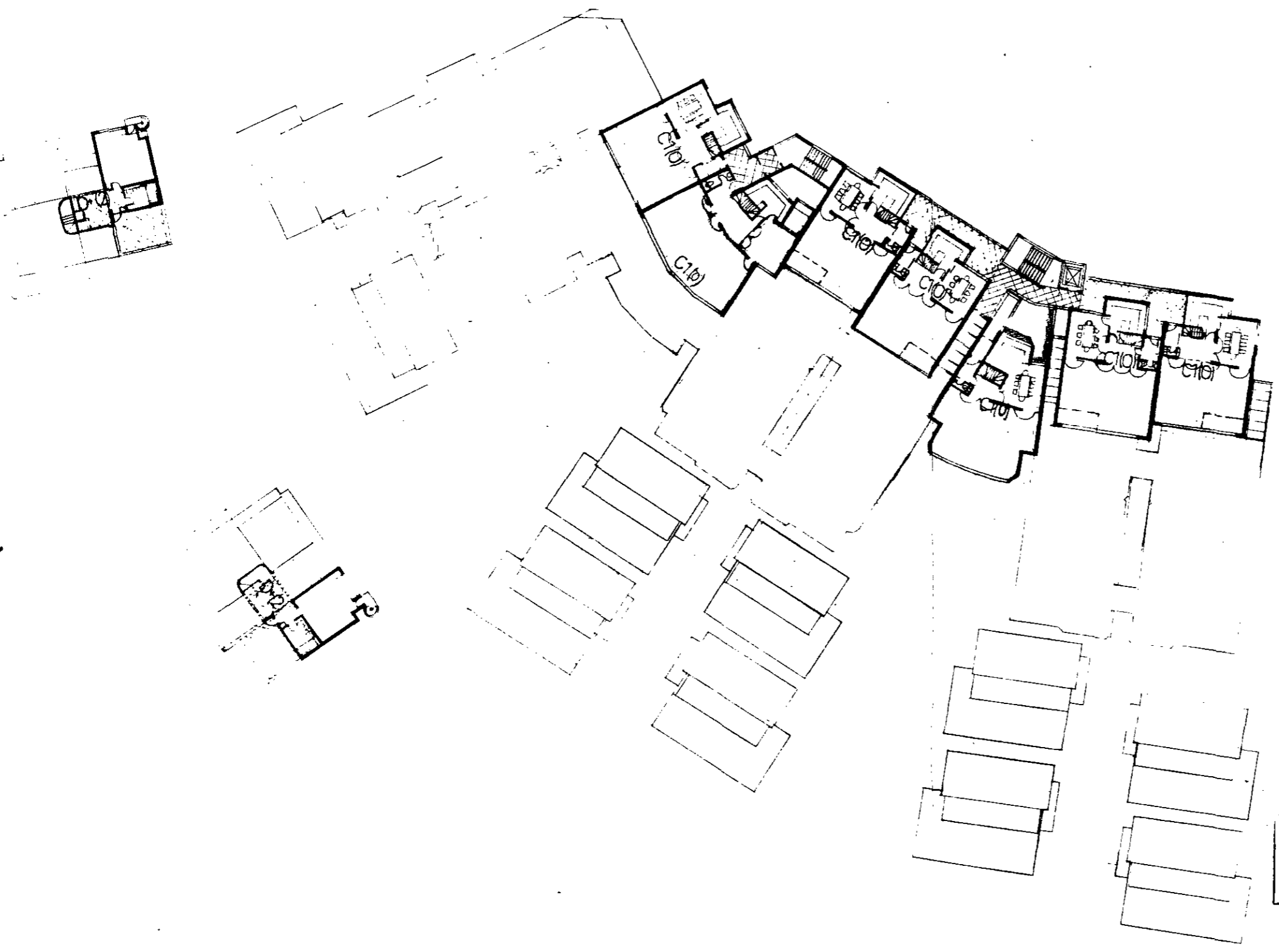
CTP/D5/4/A/35510/R3

SPEDAN TOWER
BUKHATIR INVESTMENTS LTD
BICKERDIKE ALLEN SIMOVIC ARCHITECTS

©1982 1:400
IVAN SIMOVIC RIBA-RIP PLAN IAA
Chartered Architect
12 The Drive London N10 2PX 0 662 5551

6D
EDF4

LEVEL 4



LONDON BOROUGH OF CAMDEN
TOWN AND COUNTRY PLANNING ACTS
6 APR 1982
PLANS ~~NOT APPROVED~~ APPROVED
ON BEHALF OF THE COUNCIL



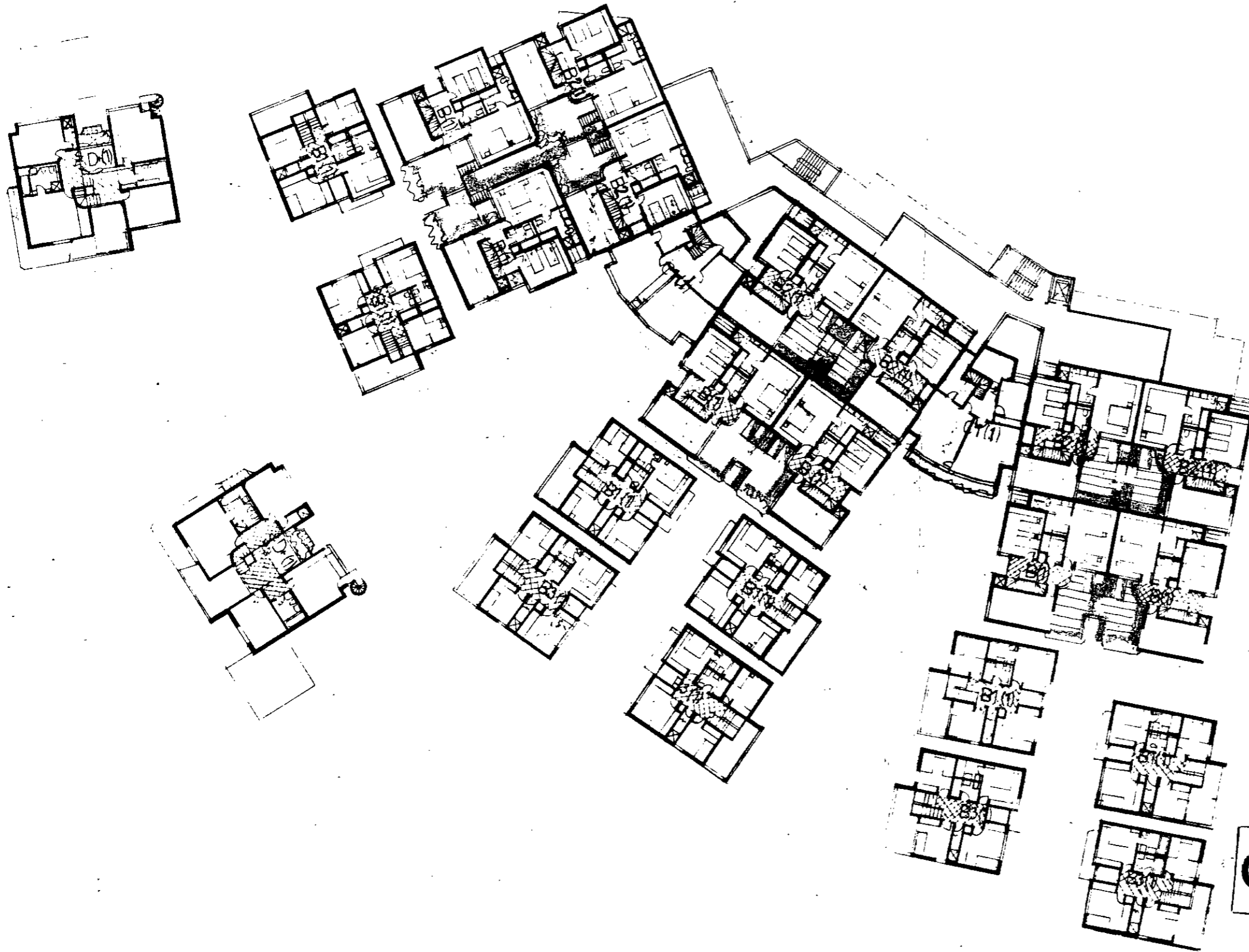
* LEVEL 4 THIS PLAN IS ILLUSTRATING A
LIVED LAYOUT AT A PARTICULAR
LEVEL AND IS BASED GENERAL
ON THE REFERENCE LAYOUT PLAN
NO. SP1/P, WHICH IS THE
MASTER LAYOUT FOR THE
PURPOSES OF THE APPLICATION.

CTP/DS/4 /A /33510(R3)

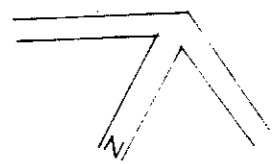
SPEDAN TOWER
BUKHATIR INVESTMENTS LTD
BICKERDIKE ALLEN SIMOVIC
ARCHITECTS
© 1982 1/400
IVAN SIMOVIC - RIBA - DIP PLANNING
Chartered Architect
12 The Grove London N10 6PX 0 223 2227

6D
ED F3

LEVEL 3



LONDON BOROUGH OF CAMDEN
TOWN AND COUNTRY PLANNING ACT
6 APR 1982
PLANS ~~NOT APPROVED~~ APPROVED
ON BEHALF OF THE COUNCIL



* LEVEL 3 - THIS PLAN IS ILLUSTRATING A
LIVED LAYOUT AT A PARTICULAR
LEVEL AND IS BASED GENERALLY
ON THE REFERENCE LAYOUT PLAN
NO. 07/19, WHICH IS THE
PAPER LAYOUT FOR THE
PURPOSES OF THE APPLICATION.

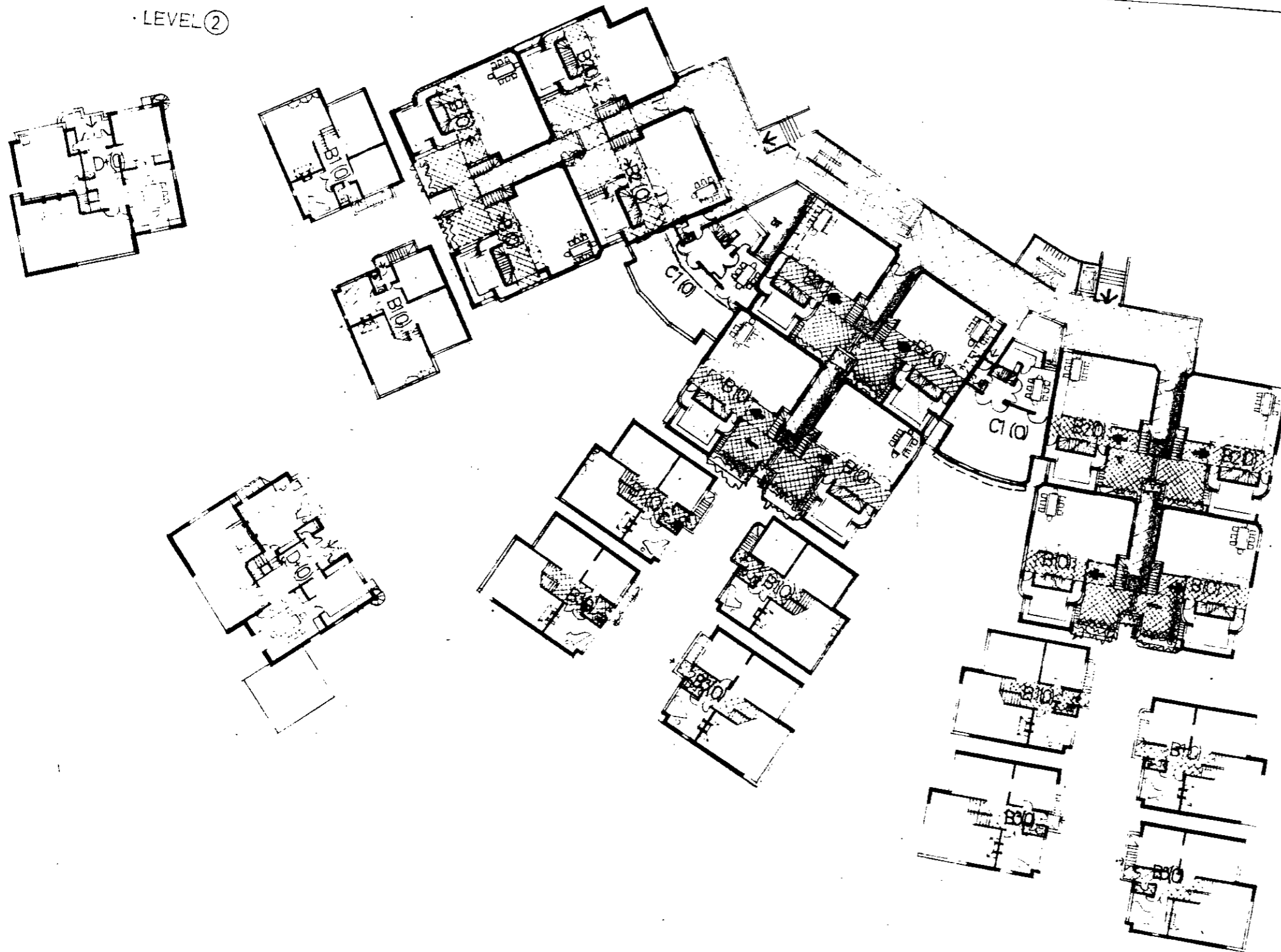
CTP/05/4/A/33510 (R3)

SPEDAN TOWER
BUKHATIR INVESTMENTS LTD
BICKERDIKE ALLEN SIMOVIC ARCHITECTS

© 1982 1:400
IVAN SIMOVIC RIBA RIBA RIBA RIBA RIBA
Chartered Architect
13 The Grove London N10 8PX 01 823 2150

65
2DF2

LEVEL ②



LONDON BOROUGH OF CAMDEN
TOWN AND COUNTRY PLANNING ACTS
6 APR 1982
PLANS ~~NOT APPROVED~~ APPROVED
ON BEHALF OF THE COUNCIL

* LEVEL ②: THIS PLAN IS ILLUSTRATING A
LAIRED LAYOUT AT A PARTICULAR
LEVEL. ALSO IS BASED GENERALLY
ON THE REFERENCED LAYOUT
AND SEITE, WHICH IS THE
MASTER LAYOUT FOR THE
PURPOSES OF THE APPLICATION.

CTP/DS/4/A/33510(R3)

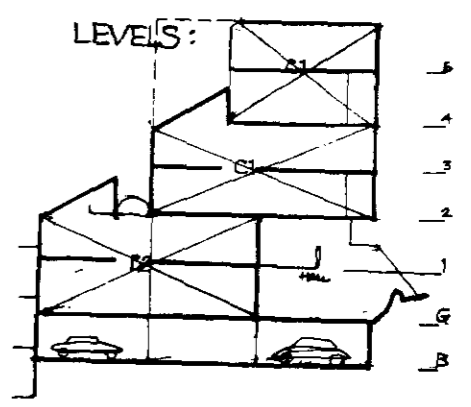
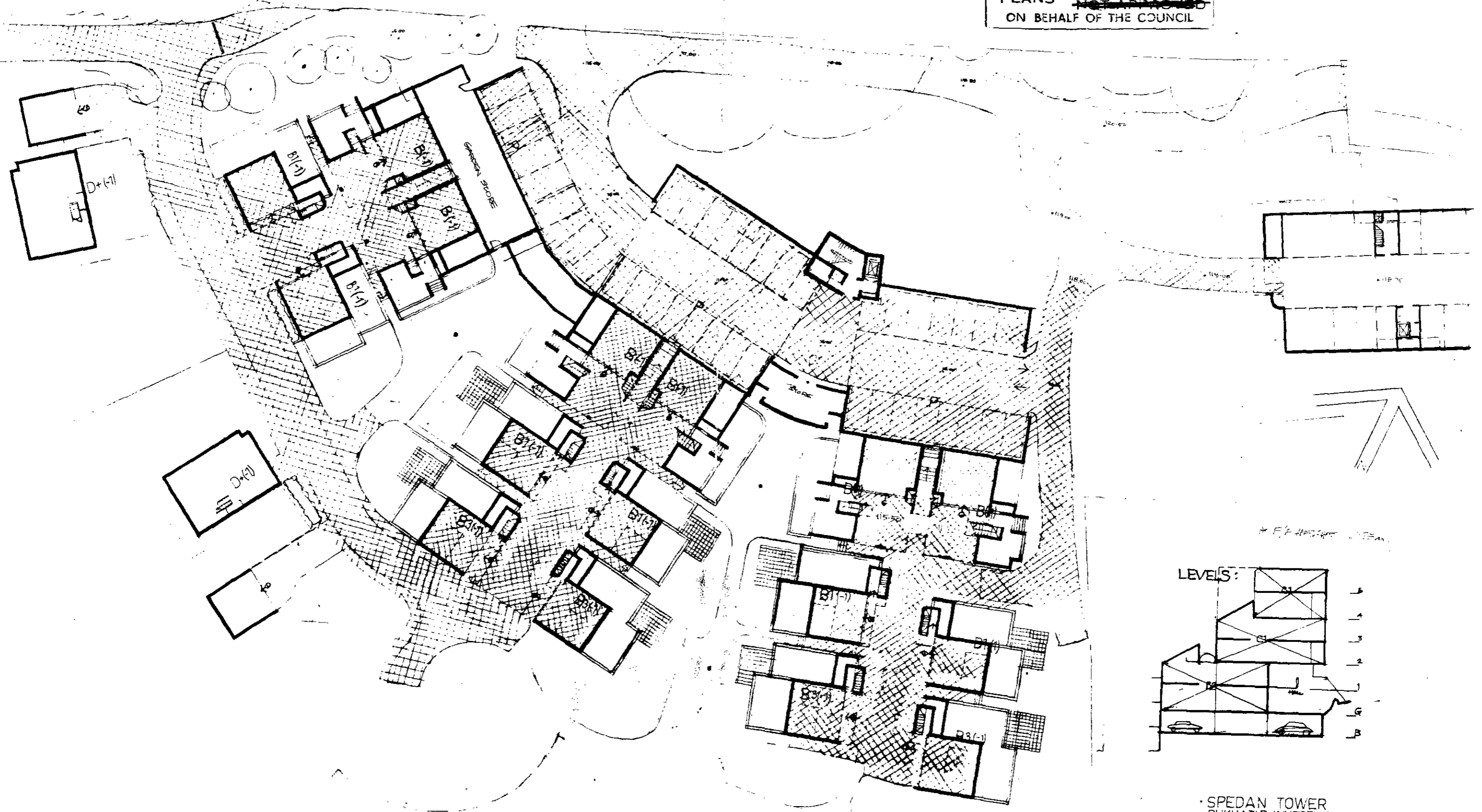
SPEDAN TOWER
BUKHATIR INVESTMENTS LTD
BICKERDIKE ALLEN SIMOVIC ARCHITECTS
(c) 1982 1:400

IVAN SIMOVIC - RIBA - RIBA PLAN AA
Chartered Architect
12 The Drive London N10 2PX 01-202 2222

LEVEL B

LONDON BOROUGH OF CAMDEN
TOWN AND COUNTRY PLANNING ACTS
6 APR 1982
PLANS ~~NOT APPROVED~~ APPROVED
ON BEHALF OF THE COUNCIL

EDFI



SPEDAN TOWER
BUKHATIR INVESTMENTS LTD.
BICKERDIKE ALLEN SIMOVIC ARCHITECTS

CTP/DS/4/A/335/10 (R3)

1:400

IVAN SIMOVIC - RIBA - RCP PLAN 008
Chartered Architect
18 The Drive London N19 6PX Tel 011 2344