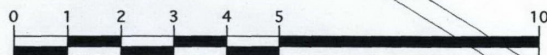
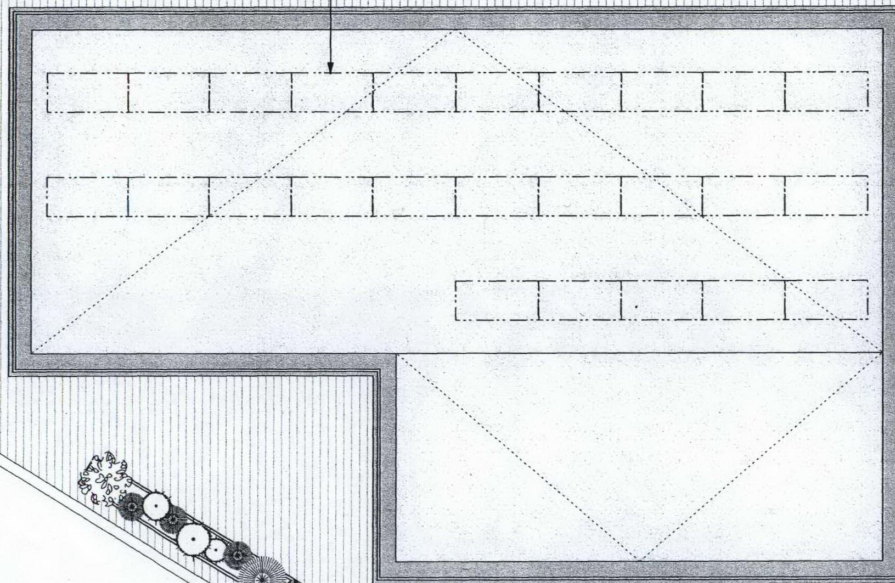


Possible location for a PV array consisting of  
up to 40 no. Sunpower SPR-200-BLK panels,  
with a maximum potential output of 8 kW



Metres

DO NOT SCALE FROM THE DRAWING. ALL DIMENSIONS ARE IN MM, ARE INDICATIVE ONLY & MUST BE CONFIRMED ON SITE. COPYRIGHT MRJ RUNDELL & ASSOCIATES LTD

Key

A	Added in possible location of PV array
B	Revised location of PV array

Client  
**MRJ Rundell Associates**

Structural Engineer  
-

Services Engineer  
-

Quantity Surveyor  
-

**MRJ RUNDELL + ASSOCIATES LTD**  
Architecture & Design Services

The Courtyard - Unit 2a  
44 Gloucester Avenue  
London NW1 8JD  
Tel. 020 7483 8360  
Fax. 020 7483 8361  
www.rundellassociates.com  
office@rundellassociates.com

Project  
**55 Holmes Road**

Drawing Title  
**Proposed  
Roof Plan  
Scheme A**

Drawn by  
**DN**

Date  
**05/03/08**

Scale  
**1:100 @ A3**

Job No.  
**2802-A**

Drawing No.

**402**

Checked  
Revision  
**B**