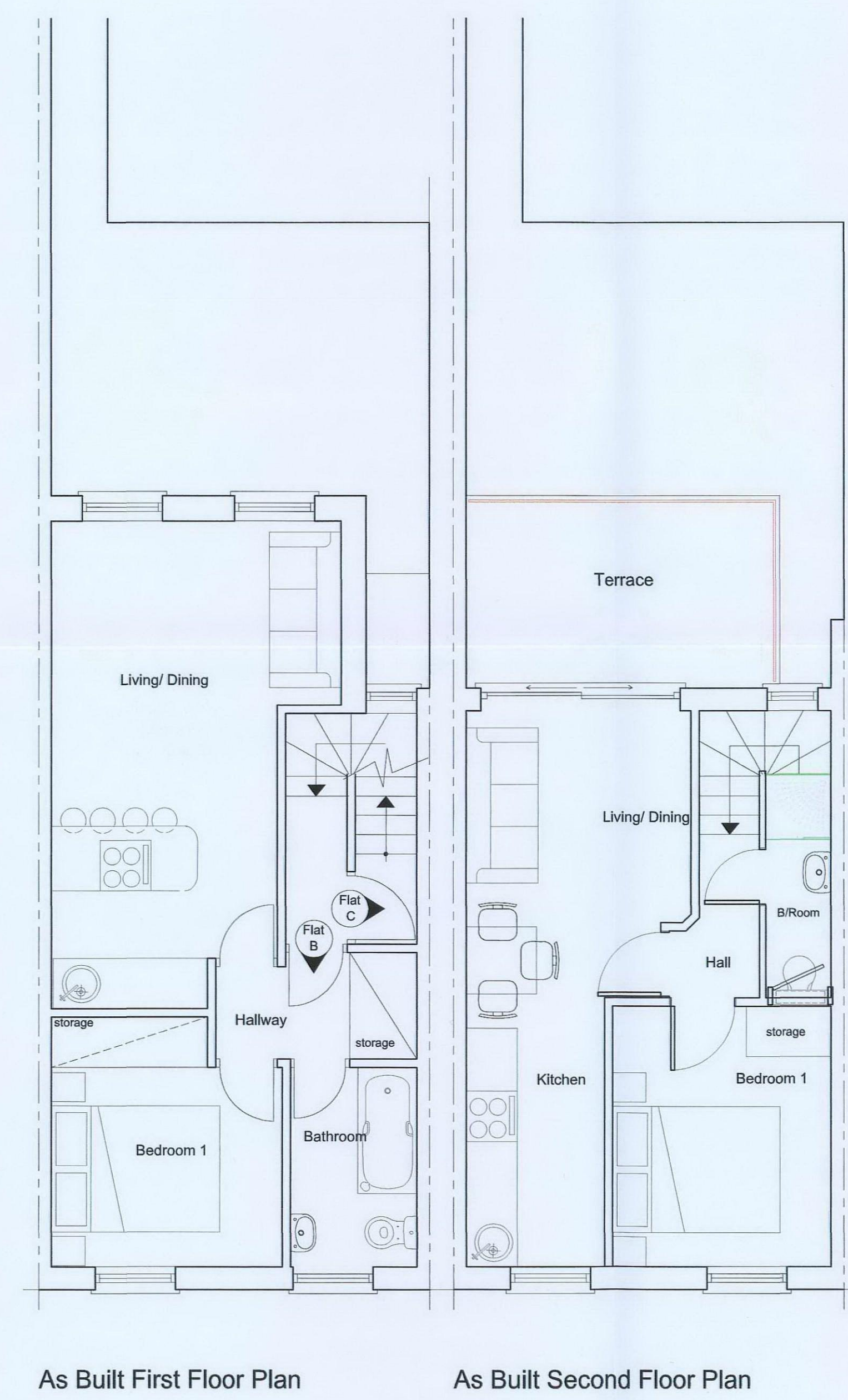
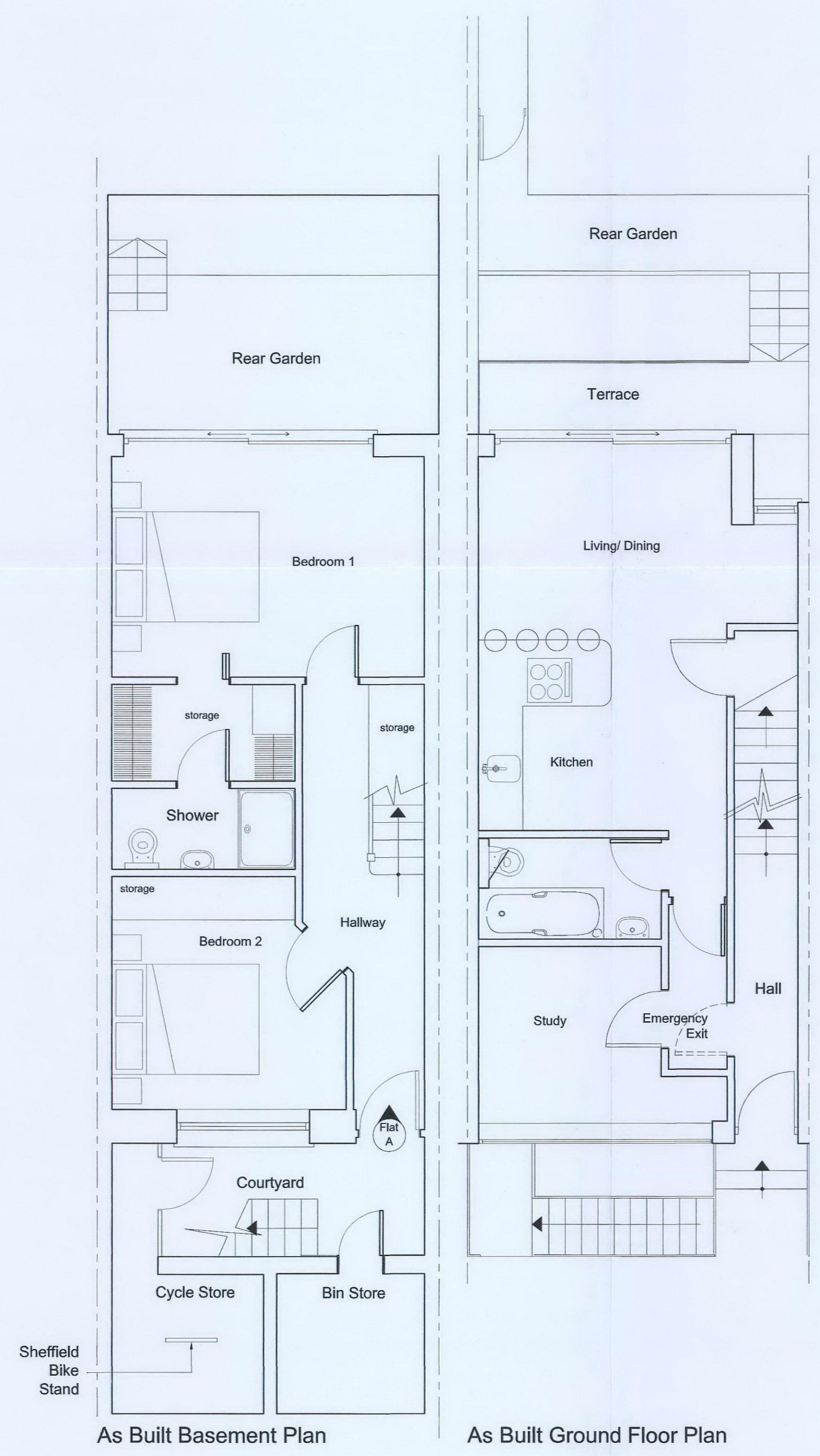
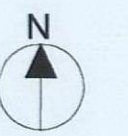


**LOCATION PLAN**  
scale 1:1250



New Plastic  
Framed  
Windows to  
Front  
Elevation

A [0000] (Sheffield) Board Approved on Cycle Store	
Rev	Date
Planning Application - Conditions	
P. BUXTON & CO ARCHITECTURE AND PROPERTY SERVICES 30 Redcliffe Avenue, London W11 2EP Tel: 020 8511 8511 Fax: 020 8511 8511 e-mail: p.buxton@pbc.co.uk	
Project 108 Royal College Street London NW1 6SP	
Job Title Change of Use from A3 to Residential, Rear Extensions, Conversion of Upper Flat into 3 Residential Units & Re-opening of Front Lightwell	
Drawing Title Existing Site Location Plan, As Built Floor Plans & Front Elevation	
Date 07.12.08 Drawn AC	Scale 1:500 1:1250 @ A1
Drawn No. Royal/08/01	Rev. A