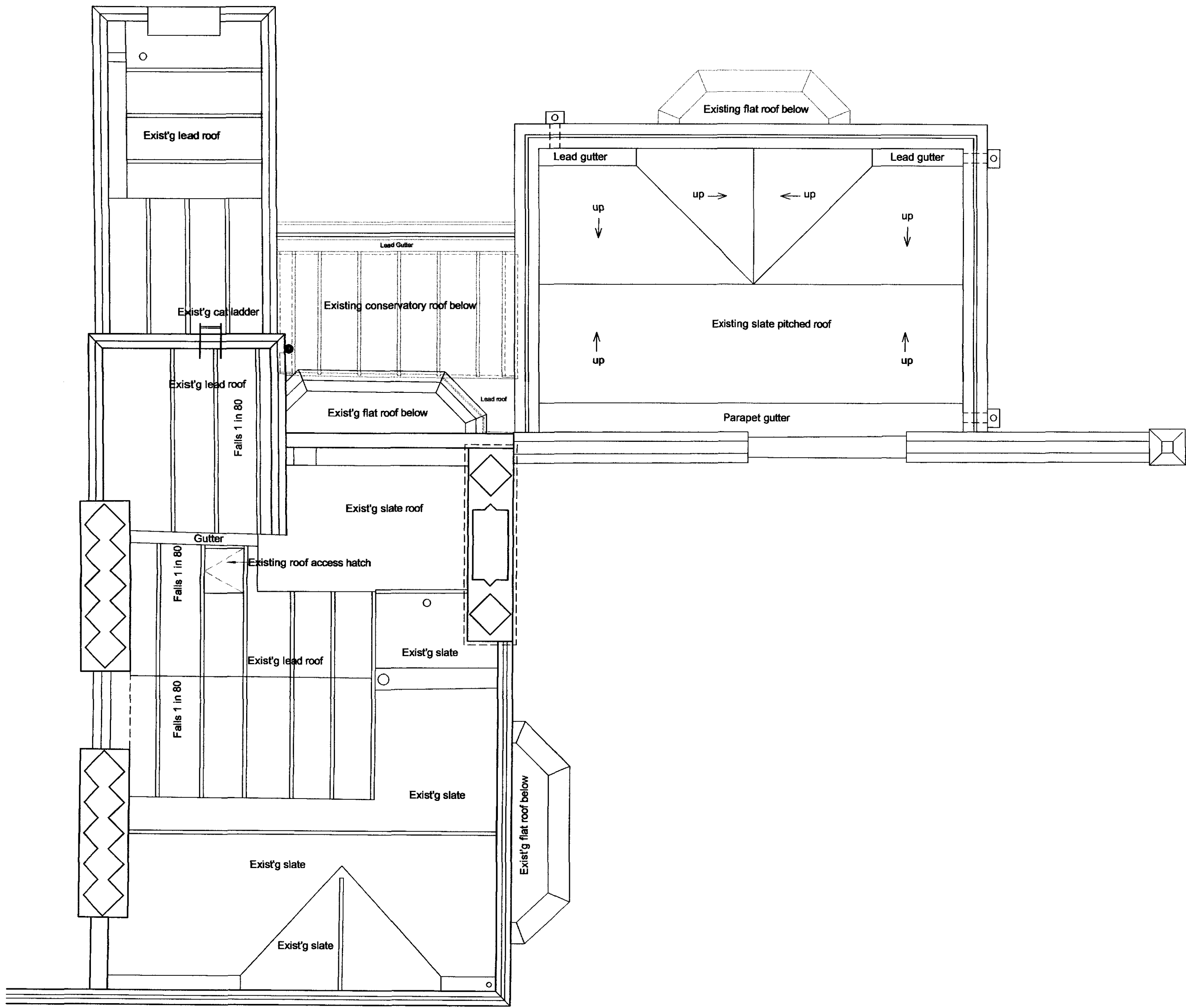
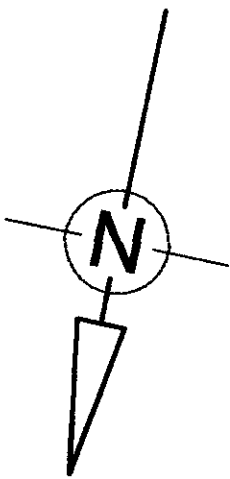


DO NOT SCALE THIS DRAWING

CONTRACTORS ARE TO CHECK ALL DIMENSIONS PRIOR TO COMMENCEMENT ON SITE AND NOTIFY THE ARCHITECT OF ANY ERRORS, OMISSIONS, OR DISCREPANCIES.

TATE & HINDLE DESIGN LIMITED RETAIN COPYRIGHT OF THIS DRAWING. IT MAY NOT BE COPIED, ALTERED OR REPRODUCED IN ANY WAY WITHOUT THEIR WRITTEN AUTHORITY.



ROOF PLAN

RECEIVED 27 FEB 2009

00 Issued for TV aerial planning application 27.02.09 BP

rev description date issue checked by

PLANNING

client

VANCOUVER LTD

project

1 ST. KATHARINE'S PRECINCT
REGENTS PARK
LONDON NW1

drawing

EXISTING ROOF PLAN

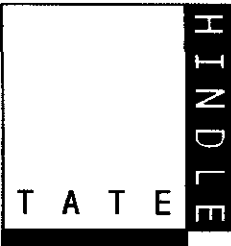
scale 1:50 @ A1, 1:100 @ A3 date FEB. 2009

cad reference checked

job 5510 dwg (PL) 201 revision 00

TATE AND HINDLE DESIGN LIMITED
1 LINDSEY STREET
SMITHFIELD
LONDON EC1A 9HP

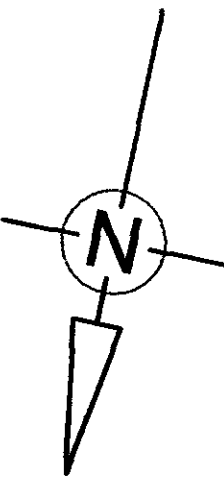
Tel : 020 7332 4850 Fax : 020 7332 4888
E : mail@tatehindle.co.uk W : www.tatehindle.co.uk



DO NOT SCALE THIS DRAWING

CONTRACTORS ARE TO CHECK ALL DIMENSIONS PRIOR TO COMMENCEMENT ON SITE AND NOTIFY THE ARCHITECT OF ANY ERRORS, OMISSIONS, OR DISCREPANCIES.

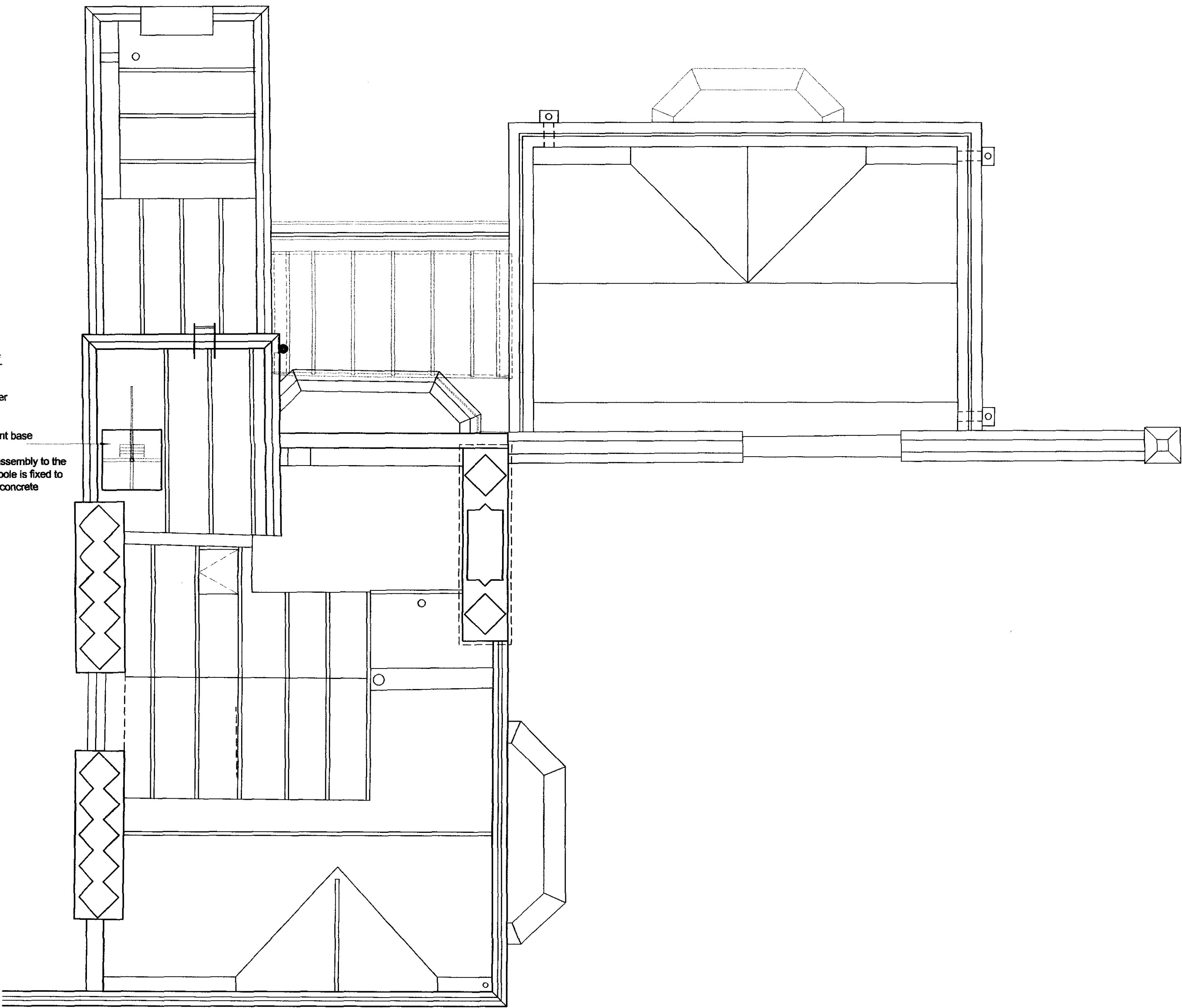
TATE & HINDLE DESIGN LIMITED RETAIN COPYRIGHT OF THIS DRAWING. IT MAY NOT BE COPIED, ALTERED OR REPRODUCED IN ANY WAY WITHOUT THEIR WRITTEN AUTHORITY.



PROPOSED NEW TV AERIAL consisting of

UHF Aerial 1200mm long, over
DAB Aerial (Televes 3 bar 600mm long), over
FM Aerial (Triax 3 bar 600mm long), with
2000mm high aerial mounting pole, fixed to
980mm x 980mm MON-PEN ballasted mount base

Note : there is no direct fixing of the aerial assembly to the
roof or building fabric. The aerial mounting pole is fixed to
a metal pan which is ballasted with precast concrete
slabs to provide complete support.



ROOF PLAN

RECEIVED 27 Feb 2009

00 Issued for TV aerial planning application 27.02.09 BP

rev description date issue checked
by by

PLANNING

client

VANCOUVER LTD

project

1 ST. KATHARINE'S PRECINCT
REGENTS PARK
LONDON NW1

drawing

ROOF PLAN
Indicating location of proposed TV aerial

scale 1:50 @ A1, 1:100 @ A3 drawn B.P. date FEB 2009

cad reference checked

jdo dwg revision

5510 (PL) 202 00

TATE AND HINDLE DESIGN LIMITED
1 LINDSEY STREET
SMITHFIELD
LONDON EC1A 9HP

Tel : 020 7332 4850 Fax : 020 7332 4888
E : mail@tatehindle.co.uk W : www.tatehindle.co.uk

HINDLE
TATE

DO NOT SCALE THIS DRAWING

CONTRACTORS ARE TO CHECK ALL DIMENSIONS PRIOR TO COMMENCEMENT ON SITE AND NOTIFY THE ARCHITECT OF ANY ERRORS, OMISSIONS, OR DISCREPANCIES.

TATE & HINDLE DESIGN LIMITED RETAIN COPYRIGHT OF THIS DRAWING. IT MAY NOT BE COPIED, ALTERED OR REPRODUCED IN ANY WAY WITHOUT THEIR WRITTEN AUTHORITY.



RECEIVED 27 FEB 2009

00 Issued for TV aerial planning application 27.02.09 BP

rev description date issue checked by by

PLANNING

client

VANCOUVER LTD.

project

1 ST. KATHARINE'S PRECINCT
REGENTS PARK
LONDON NW1

drawing

EXISTING FRONT (NORTH) ELEVATION

scale 1:50 @ A1, 1:100 @ A3 drawn B.P. date FEB 2009

date reference checked

job 5510 dwg (PL) 301 revision 00

TATE AND HINDLE DESIGN LIMITED
1 LINDSEY STREET
SMITHFIELD
LONDON EC1A 9HP

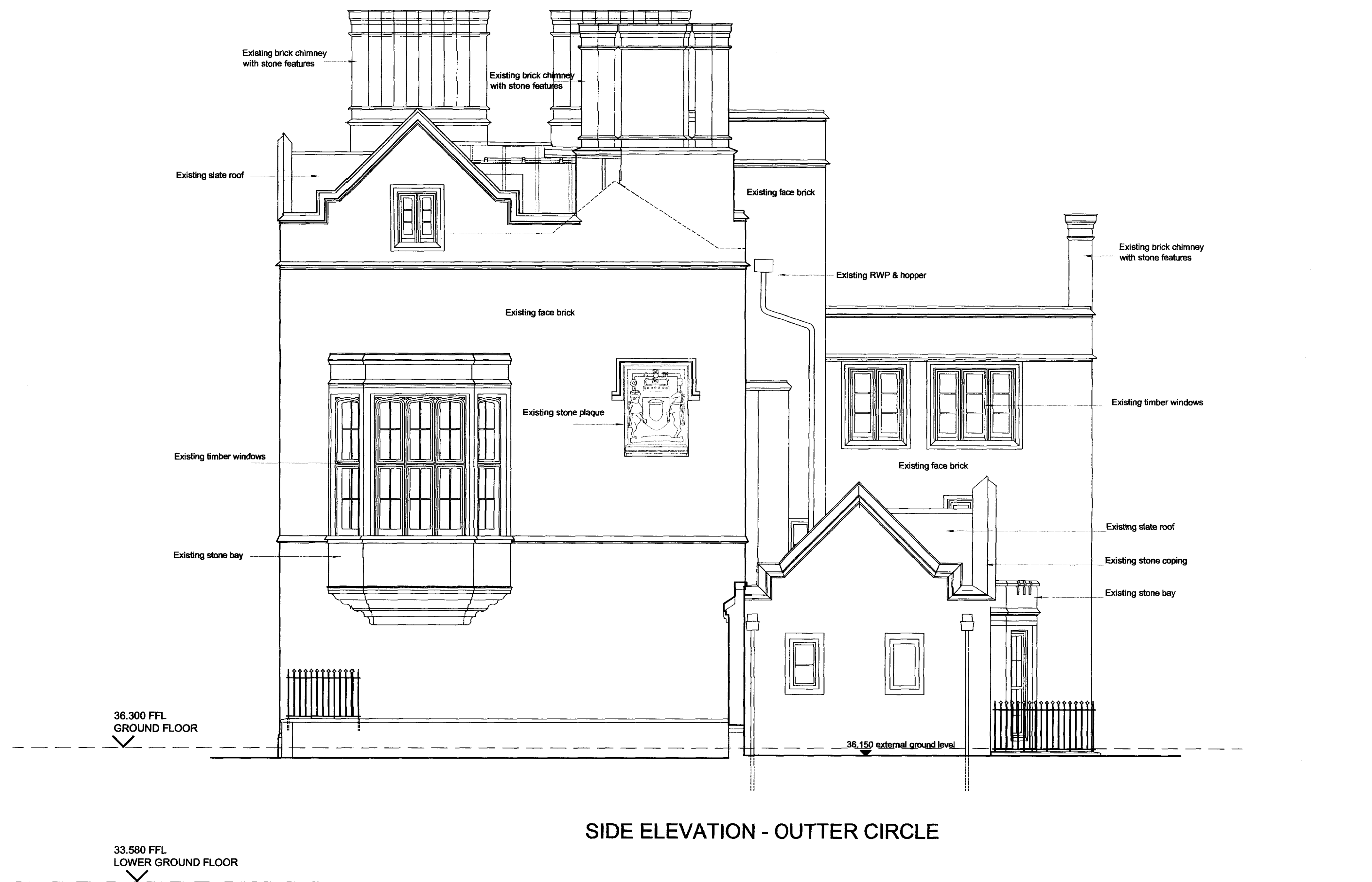
Tel : 020 7332 4850 Fax : 020 7332 4888
E : mail@tatehindle.co.uk W : www.tatehindle.co.uk

HINDLE
TATE

DO NOT SCALE THIS DRAWING

CONTRACTORS ARE TO CHECK ALL DIMENSIONS PRIOR TO COMMENCEMENT ON SITE AND NOTIFY THE ARCHITECT OF ANY ERRORS, OMISSIONS, OR DISCREPANCIES.

TATE & HINDLE DESIGN LIMITED RETAIN COPYRIGHT OF THIS DRAWING. IT MAY NOT BE COPIED, ALTERED OR REPRODUCED IN ANY WAY WITHOUT THEIR WRITTEN AUTHORITY.



RECEIVED 27 FEB 2009

00 Issued for TV aerial planning application 27.02.09 BP

rev description date issue checked by

PLANNING

client

VANCOUVER LTD.

project

1 ST. KATHARINE'S PRECINCT
REGENTS PARK
LONDON NW1

drawing

EXISTING SIDE (WEST) ELEVATION

scale 1:50 @ A1, 1:100 @ A3 drawn B.P. date FEB. 2009

cust reference checked

job drawing revision

5510 (PL) 302 00

TATE AND HINDLE DESIGN LIMITED
1 LINDSEY STREET
SMITHFIELD
LONDON EC1A 9HP

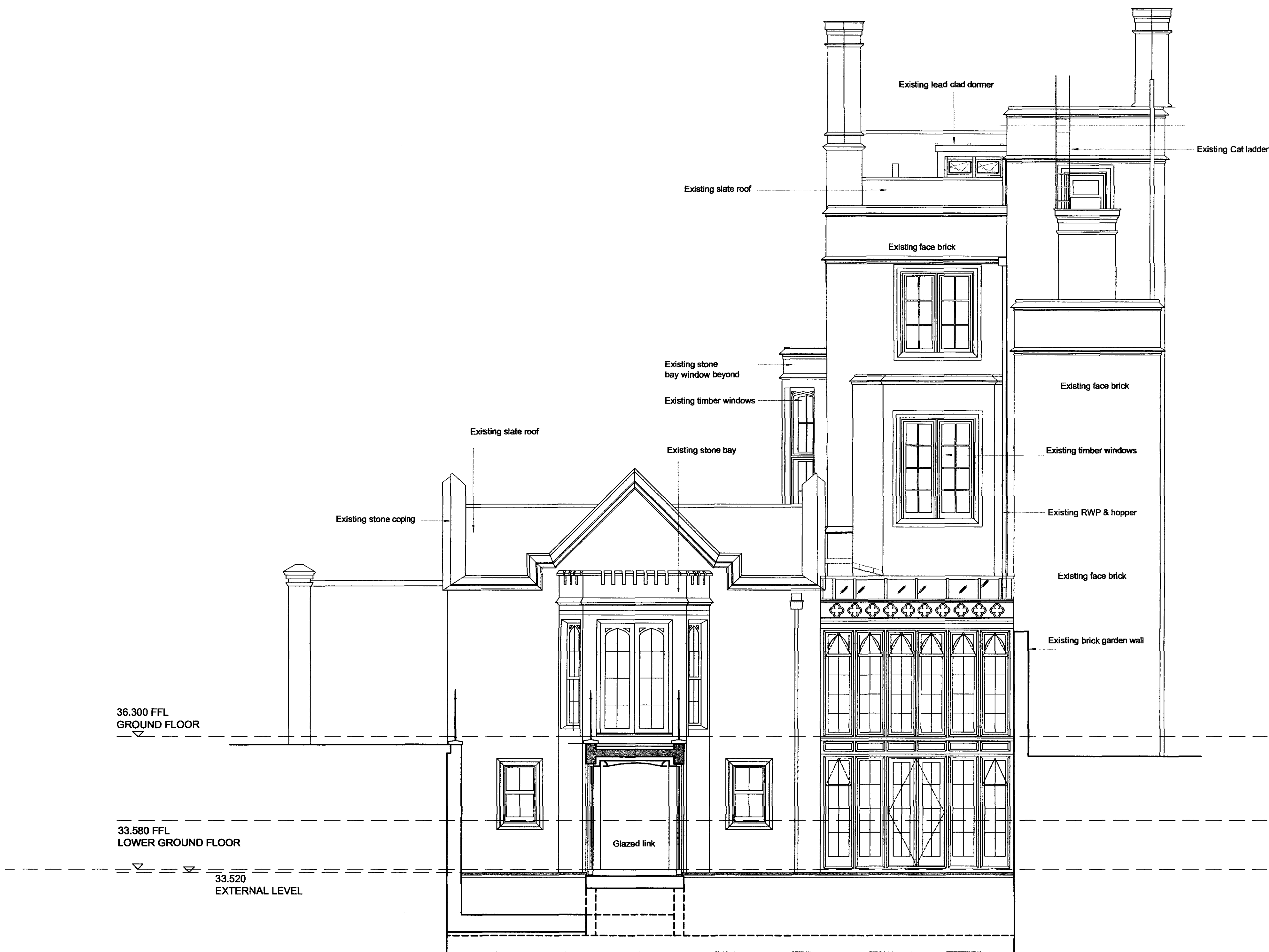
Tel : 020 7332 4850 Fax : 020 7332 4888
E : mail@tatehindle.co.uk W : www.tatehindle.co.uk

HINDLE
TATE

DO NOT SCALE THIS DRAWING

CONTRACTORS ARE TO CHECK ALL DIMENSIONS PRIOR TO COMMENCEMENT ON SITE AND NOTIFY THE ARCHITECT OF ANY ERRORS, OMISSIONS, OR DISCREPANCIES.

TATE & HINDLE DESIGN LIMITED RETAIN COPYRIGHT OF THIS DRAWING. IT MAY NOT BE COPIED, ALTERED OR REPRODUCED IN ANY WAY WITHOUT THEIR WRITTEN AUTHORITY.



RECEIVED 27 FEB 2009

00 Issued for TV aerial planning application 27.02.09 BP

rev description date issue checked by

PLANNING

client

VANCOUVER LTD.

project

1 ST. KATHARINE'S PRECINCT
REGENTS PARK
LONDON NW1

drawing

EXISTING REAR (SOUTH) ELEVATION

scale 1:50 @ A1, 1:100 @ A3 drawn B.P. date FEB. 2009

cad reference checked

job 5510 dwg (PL) 303 revision 00

TATE AND HINDLE DESIGN LIMITED
1 LINDSEY STREET
SMITHFIELD
LONDON EC1A 9HP

Tel : 020 7332 4850 Fax : 020 7332 4888
E : mail@tatehindle.co.uk W : www.tatehindle.co.uk

HINDLE
TATE

DO NOT SCALE THIS DRAWING

CONTRACTORS ARE TO CHECK ALL DIMENSIONS PRIOR TO COMMENCEMENT ON SITE AND NOTIFY THE ARCHITECT OF ANY ERRORS, OMISSIONS, OR DISCREPANCIES

TATE & HINDLE DESIGN LIMITED RETAIN COPYRIGHT OF THIS DRAWING. IT MAY NOT BE COPIED, ALTERED OR REPRODUCED IN ANY WAY WITHOUT THEIR WRITTEN AUTHORITY.



RECEIVED 27 FEB 2009

00 Issued for TV aerial planning application 27.02.09 BP

rev	description	date	issue by	checked by
-----	-------------	------	----------	------------

PLANNING

client

VANCOUVER LTD.

project

1 ST. KATHARINE'S PRECINCT
REGENTS PARK
LONDON NW1

drawing

FRONT (NORTH) ELEVATION
Indicating location of proposed TV aerial

scale	drawn	date
1:50 @ A1, 1:100 @ A3	B.P.	FEB. 2009

cost reference	checked
----------------	---------

job	dwg	revision
-----	-----	----------

5510	(PL) 401	00
------	----------	----

TATE AND HINDLE DESIGN LIMITED
1 LINDSEY STREET
SMITHFIELD
LONDON EC1A 9HP

Tel : 020 7332 4850 Fax : 020 7332 4888
E : mail@tatehindle.co.uk W : www.tatehindle.co.uk

HINDLE
TATE

DO NOT SCALE THIS DRAWING

CONTRACTORS ARE TO CHECK ALL DIMENSIONS PRIOR TO COMMENCEMENT ON SITE AND NOTIFY THE ARCHITECT OF ANY ERRORS, OMISSIONS, OR DISCREPANCIES.

TATE & HINDLE DESIGN LIMITED RETAIN COPYRIGHT OF THIS DRAWING. IT MAY NOT BE COPIED, ALTERED OR REPRODUCED IN ANY WAY WITHOUT THEIR WRITTEN AUTHORITY.

PROPOSED NEW TV AERIAL consisting of

UHF Aerial 1200mm long, over
DAB Aerial (Televes 3 bar 600mm long), over
FM Aerial (Triax 3 bar 600mm long), with
2000mm high aerial mounting pole, fixed to
980mm x 980mm MON-PEN ballasted mount base

Note : there is no direct fixing of the aerial assembly to the roof or building fabric. The aerial mounting pole is fixed to a metal pan which is ballasted with precast concrete slabs to provide complete support.



SIDE ELEVATION - OUTER CIRCLE

RECEIVED 27 FEB 2009

00 Issued for TV aerial planning application 27.02.09 BP

rev description date issue checked by

PLANNING

client

VANCOUVER LTD.

project

1 ST. KATHARINE'S PRECINCT
REGENTS PARK
LONDON NW1

drawing

SIDE (WEST) ELEVATION
Indicating location of proposed TV aerial

scale drawing date
1:50 @ A1, 1:100 @ A3 B.P. FEB. 2009

cad reference checked

job drawing revision
5510 (PL) 402 00

TATE AND HINDLE DESIGN LIMITED
1 LINDSEY STREET
SMITHFIELD
LONDON EC1A 9HP

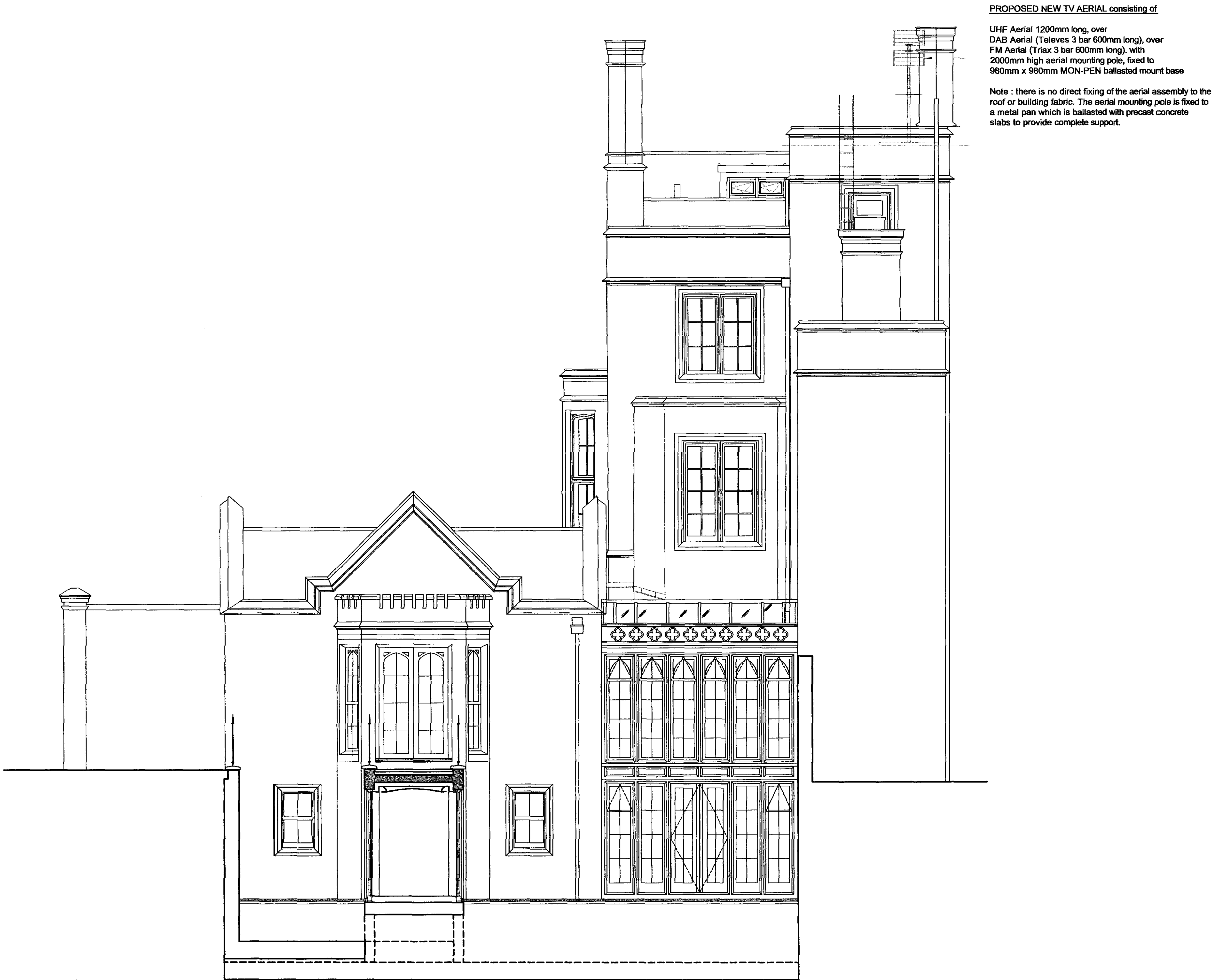
Tel : 020 7332 4850 Fax : 020 7332 4888
E : mail@tatehindle.co.uk W : www.tatehindle.co.uk

HINDLE
TATE

DO NOT SCALE THIS DRAWING

CONTRACTORS ARE TO CHECK ALL DIMENSIONS PRIOR TO COMMENCEMENT ON SITE AND NOTIFY THE ARCHITECT OF ANY ERRORS, OMISSIONS, OR DISCREPANCIES.

TATE & HINDLE DESIGN LIMITED RETAIN COPYRIGHT OF THIS DRAWING. IT MAY NOT BE COPIED, ALTERED OR REPRODUCED IN ANY WAY WITHOUT THEIR WRITTEN AUTHORITY.



RECEIVED 27 FEB 2009

00 Issued for TV aerial planning application 27.02.09 BP

rev description date issue checked by

PLANNING

client

VANCOUVER LTD.

project

1 ST. KATHARINE'S PRECINCT
REGENTS PARK
LONDON NW1

drawing

REAR (SOUTH) ELEVATION
Indicating location of proposed TV aerial

scale 1:50 @ A1, 1:100 @ A3 drawn B.P. date FEB. 2009

carl reference checked

job 5510 dwg (PL) 403 revision 00

TATE AND HINDLE DESIGN LIMITED
1 LINDSEY STREET
SMITHFIELD
LONDON EC1A 9HP

Tel : 020 7332 4850 Fax : 020 7332 4888
E : mail@tatehindle.co.uk W : www.tatehindle.co.uk

HINDLE
TATE