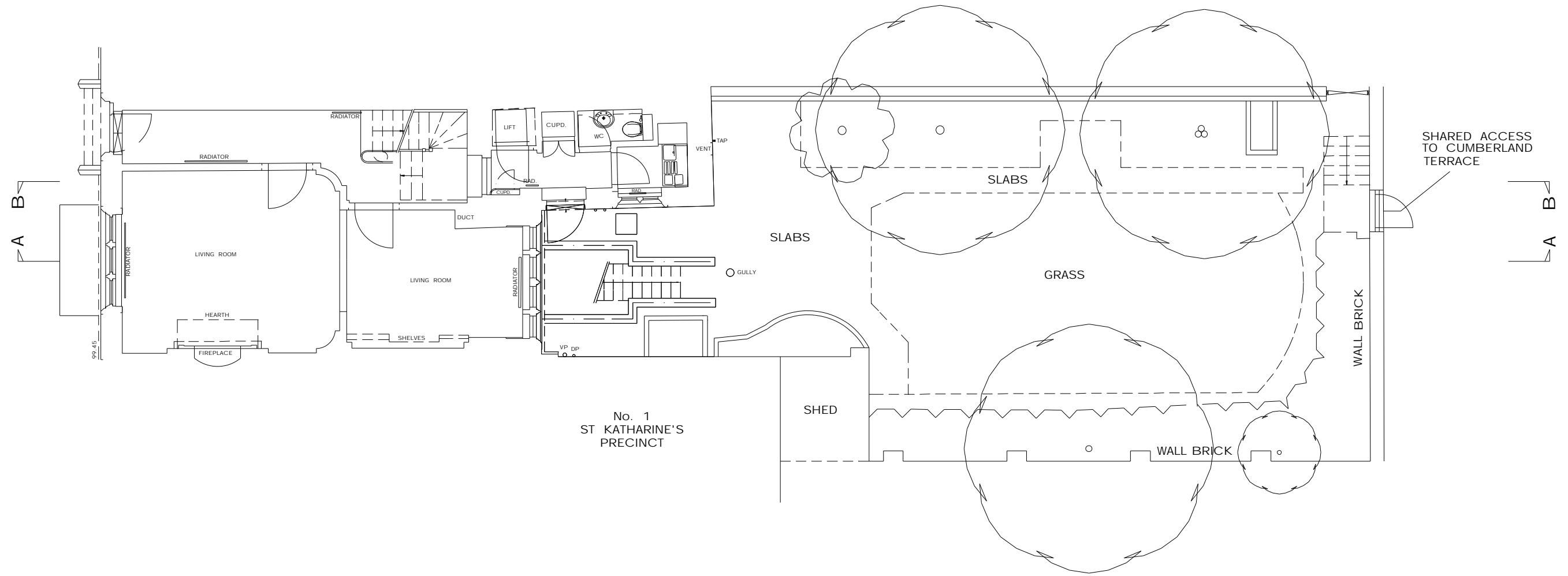


EXISTING BASMENT FLOOR PLAN		SCALE: 1:50 @ A3 1:25 @ A1	REV: D
PROJECT: 2 ST KATHARINE'S PRECINCT	CLIENT: ADAM HUDALY		REV: C
DRAWING NO.: 2008-222-201	REV: PLANNING		REV: B
DRAWN: PG	CHECKED: AC	DATE: NOVEMBER 2008	REV: A

NOTES:



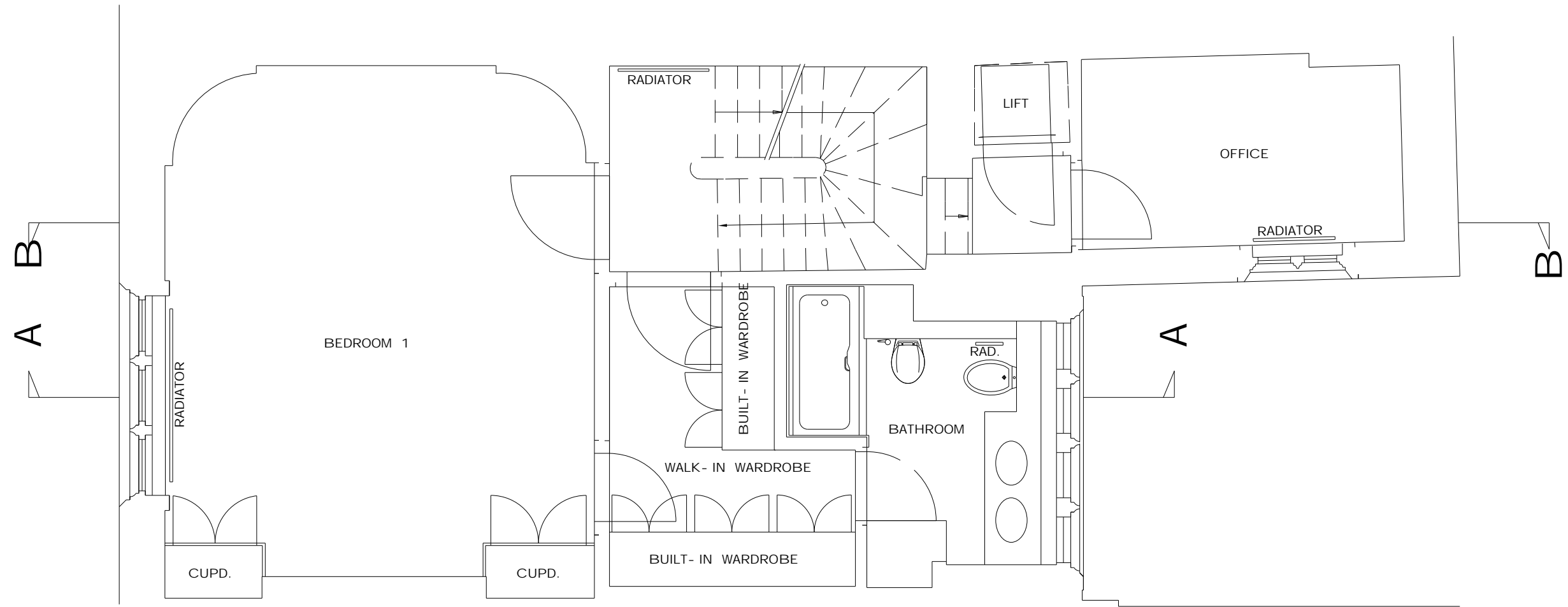
No. 1
ST KATHARINE'S
PRECINCT



crawford partnership
 Architecture • Interior Design • Development
 1a Muswell Hill, London, N10 3TH
 Tel: 020 8444 2070 - Fax: 020 8444 1180
 info@crawfordpartnership.co.uk
 www.crawfordpartnership.co.uk
 Company number 3499361

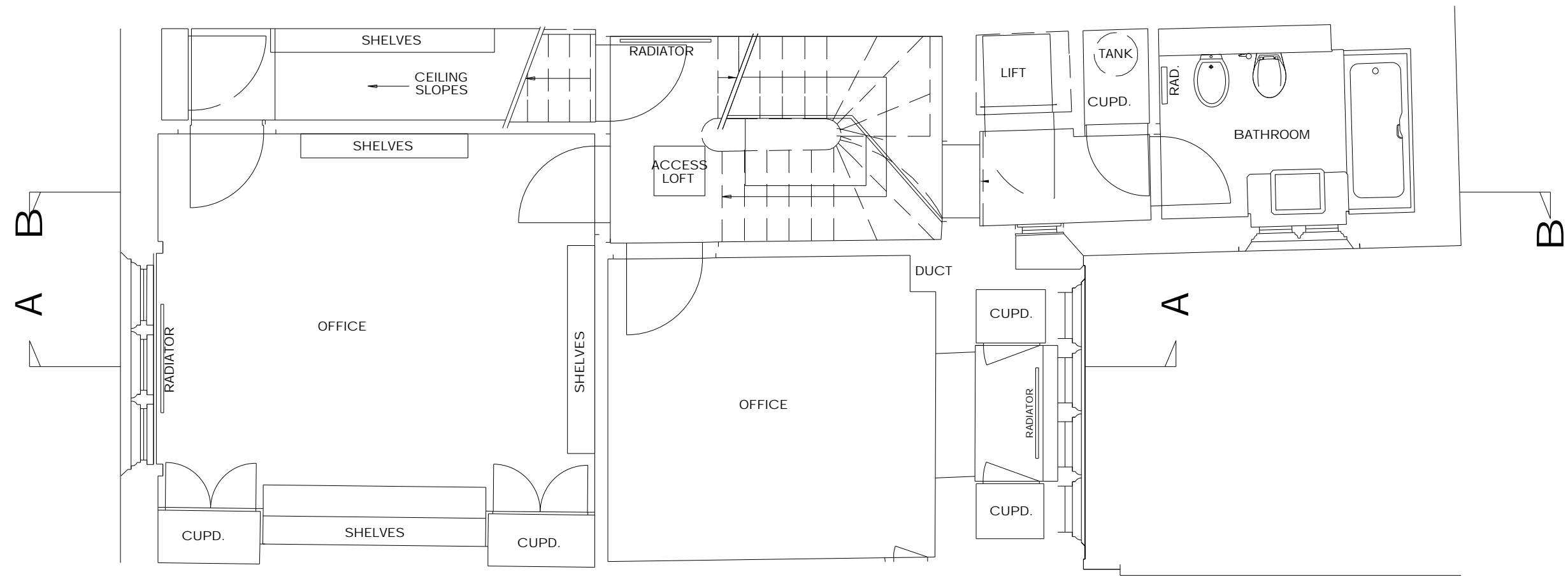
EXISTING GROUND FLOOR PLAN		SCALE: 1:100 @ A3 1:50 @ A1	REV: D
PROJECT: 2 ST KATHARINE'S PRECINCT	CLIENT: ADAM HUDALY		REV: C
DRAWING NO.: 2008-222-202	STATUS: PLANNING		REV: B
DRAWN: PG	CHECKED: AC	DATE: NOVEMBER 2008	REV: A

NOTES:



EXISTING FIRST FLOOR PLAN		SCALE: 1:50 @ A3 1:25 @ A1	REV: D
PROJECT: 2 ST KATHARINE'S PRECINCT	CLIENT: ADAM HUDALY		REV: C
DRAWING NO.: 2008-222-203	STATUS: PLANNING		REV: B
DRAWN: PG	CHECKED: AC	DATE: NOVEMBER 2008	REV: A

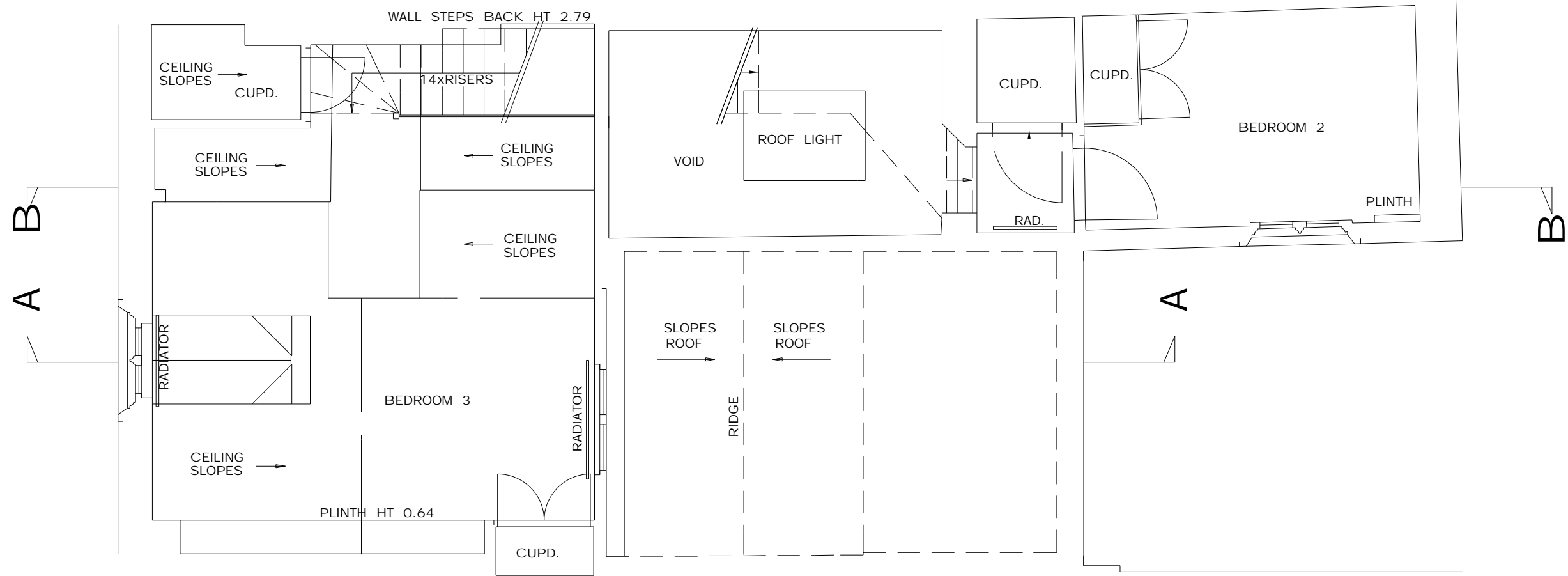
NOTES:

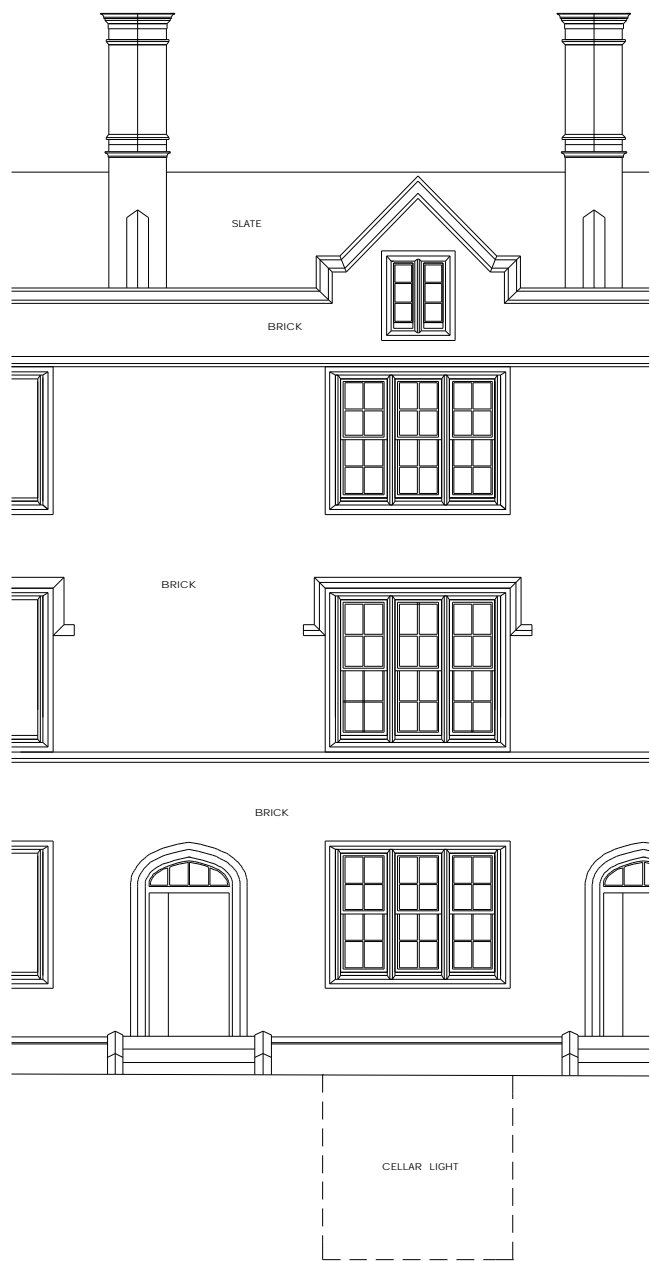


crawford partnership
 Architecture • Interior Design • Development
 1a Muswell Hill, London, N10 3TH
 Tel: 020 8444 2070 • Fax: 020 8444 1180
 info@crawfordpartnership.co.uk
 www.crawfordpartnership.co.uk
 Company number 3499361

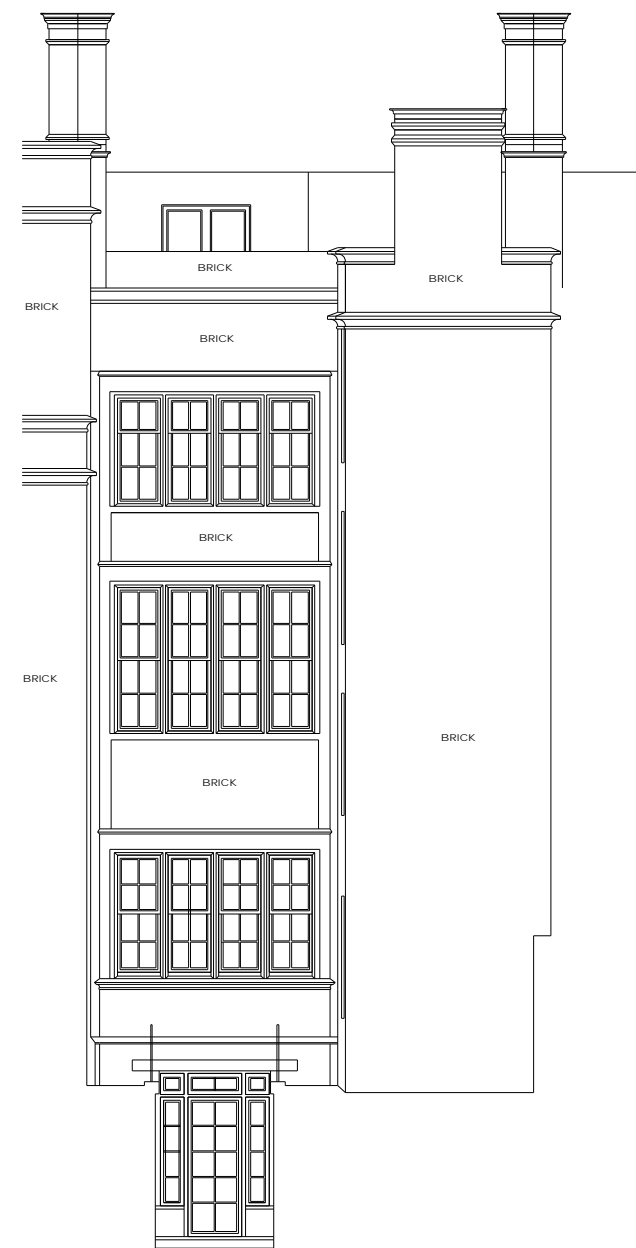
PROJECT: 2 ST KATHARINE'S PRECINCT		CLIENT: ADAM HUDALY	SCALE: 1:50 @ A3 1:25 @ A1	REV: D
DRAWING NO.: 2008-222-204	REV:	STATUS: PLANNING		REV: C
DRAWN: PG	CHECKED: AC	DATE: NOVEMBER 2008		REV: B
				REV: A

NOTES:






FRONT ELEVATION



REAR ELEVATION



 crawford partnership <small>Architecture • Interior Design • Development</small>	EXISTING FRONT AND REAR ELEVATION		SCALE: 1:100 @ A3 1:50 @ A1	REV: D	NOTES:
	PROJECT: 2 ST KATHARINE'S PRECINCT	CLIENT: ADAM HUDALY	REV: C		
	DRAWING NO.: 2008-222-206	STATUS: PLANNING	REV: B		
	DRAWN: PG	CHECKED: AC	DATE: NOVEMBER 2008	REV: A	
	1a Muswell Hill, London, N10 3TH Tel: 020 8444 2070 • Fax: 020 8444 1180 info@crawfordpartnership.co.uk www.crawfordpartnership.co.uk Company number 3499361				



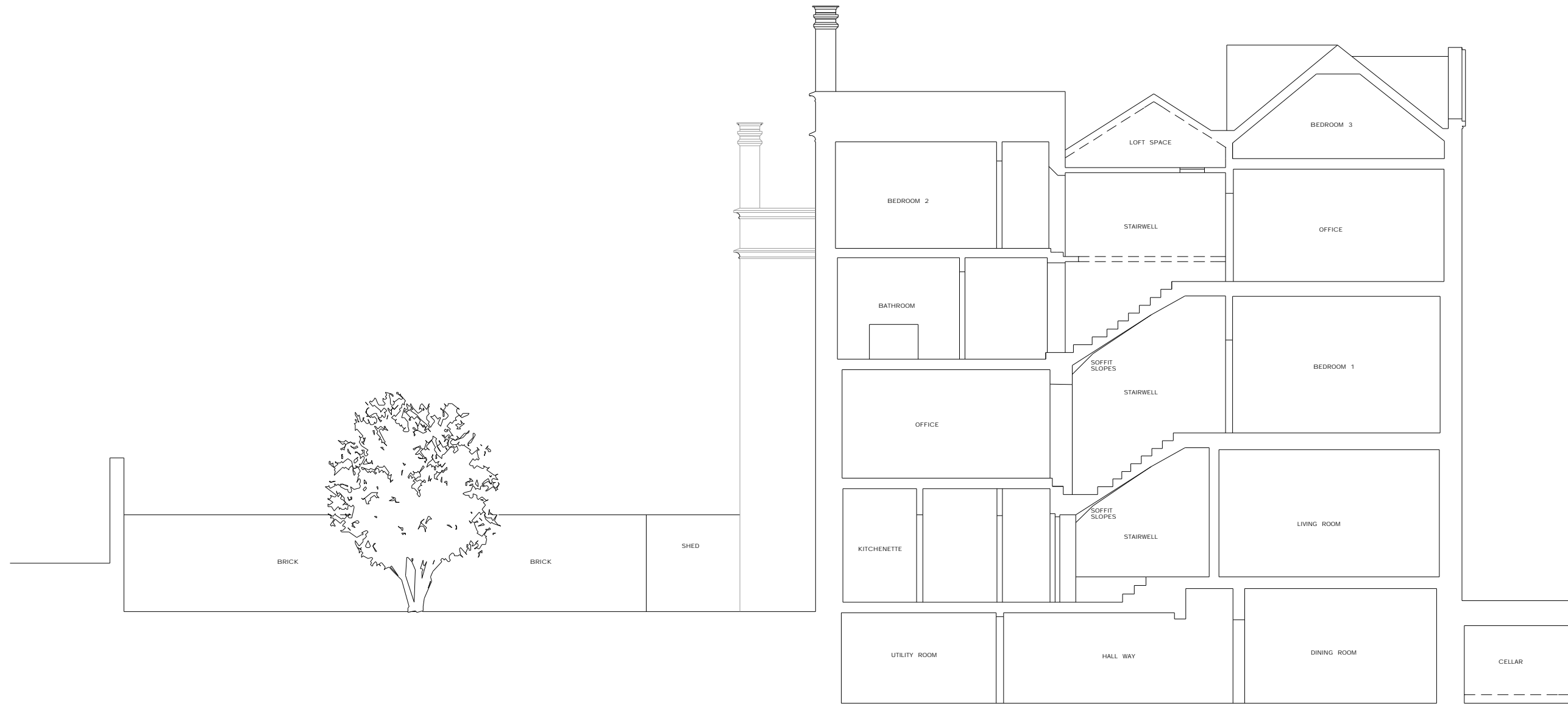
SECTION A - A



crawford partnership
 Architecture • Interior Design • Development
 1a Muswell Hill, London, N10 3TH
 Tel: 020 8444 2070 - Fax: 020 8444 1180
 info@crawfordpartnership.co.uk
 www.crawfordpartnership.co.uk
 Company number 3499361

EXISTING SECTION AA		SCALE: 1:100 @ A3 1:50 @ A1	REV: D
PROJECT: 2 ST KATHARINE'S PRECINCT	CLIENT: ADAM HUDALY		REV: C
DRAWING NO.: 2008-222-207	REV:	STATUS: PLANNING	REV: B
DRAWN: PG	CHECKED: AC	DATE: NOVEMBER 2008	REV: A

NOTES:



SECTION B - B



crawford partnership
 Architecture • Interior Design • Development
 1a Muswell Hill, London, N10 3TH
 Tel: 020 8444 2070 - Fax: 020 8444 1180
 info@crawfordpartnership.co.uk
 www.crawfordpartnership.co.uk
 Company number 3499361

EXISTING SECTION BB		SCALE: 1:100 @ A3 1:50 @ A1	REV: D
PROJECT: 2 ST KATHARINE'S PRECINCT	CLIENT: ADAM HUDALY		REV: C
DRAWING NO.: 2008-222-208	REV:	STATUS: PLANNING	REV: B
DRAWN: PG	CHECKED: AC	DATE: NOVEMBER 2008	REV: A

NOTES: