
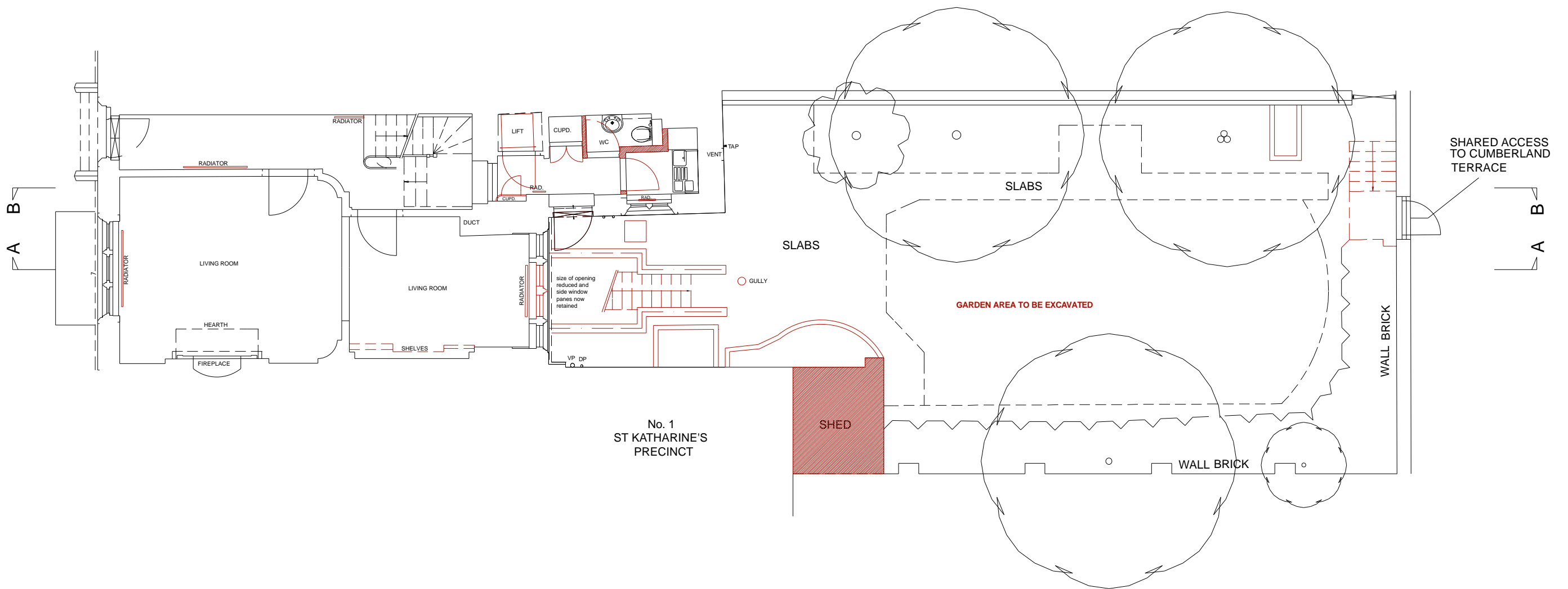


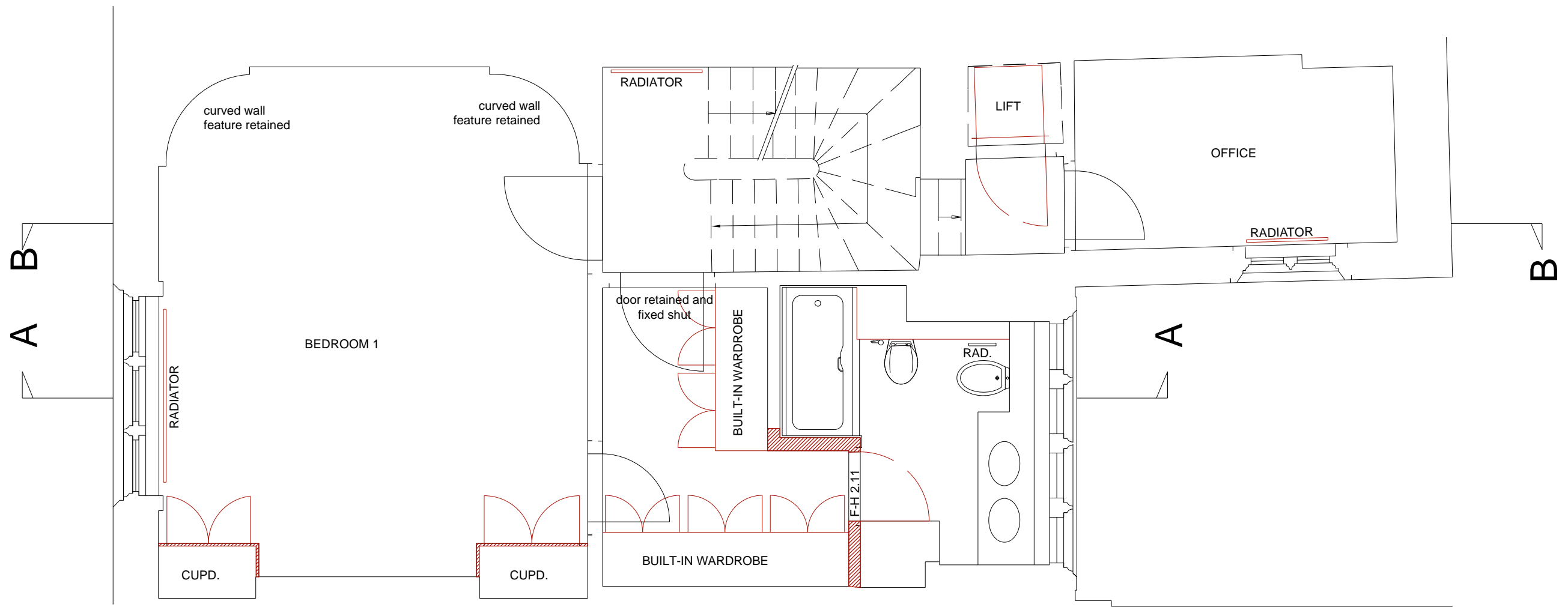




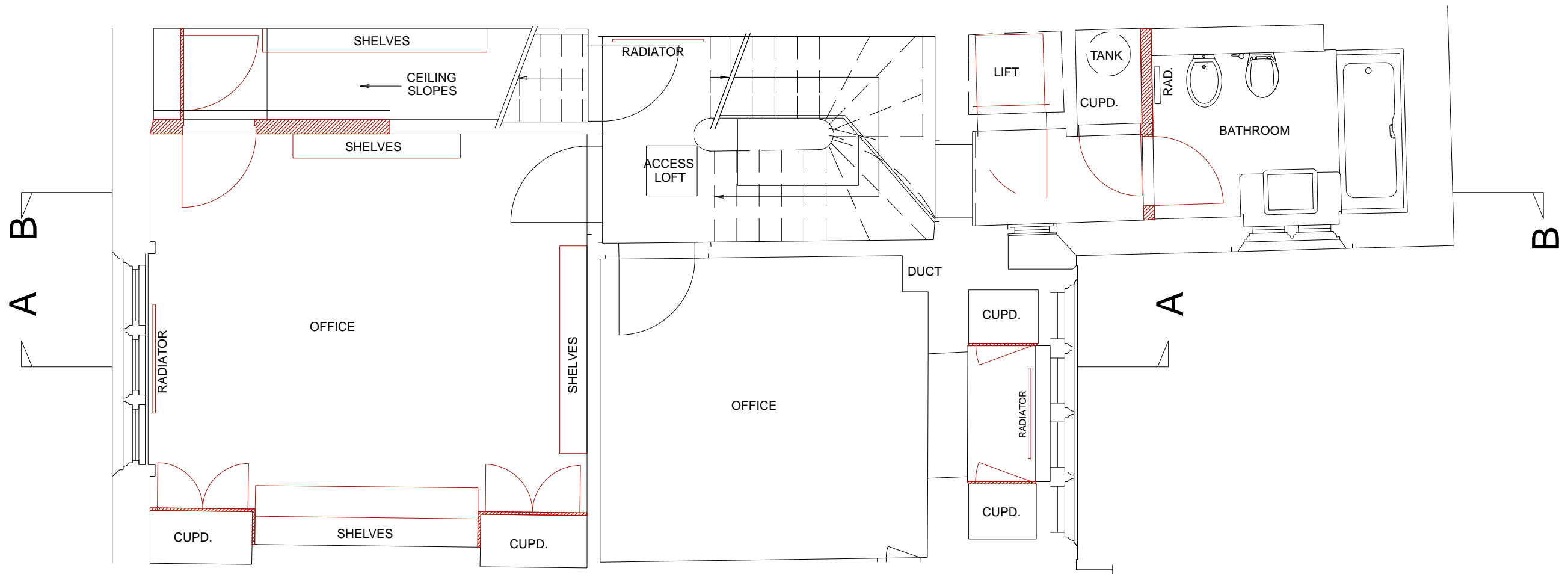
BASMENT FLOOR DEMOLITION PLAN			SCALE:	1:50 @ A3	1:25 @ A1	REV:	A	amendments further to Conservation Officer's comments	NOTES:  TO BE DEMOLISHED
PROJECT:		2 ST KATHARINE'S PRECINCT	CLIENT:		ADAM HUDALY	REV:	B		
DRAWING NO.:		2008-222-301	REV:		A	STATUS:	C		
DRAWN:		PG	CHECKED:		AC	DATE:	D	FEBRUARY 2009	





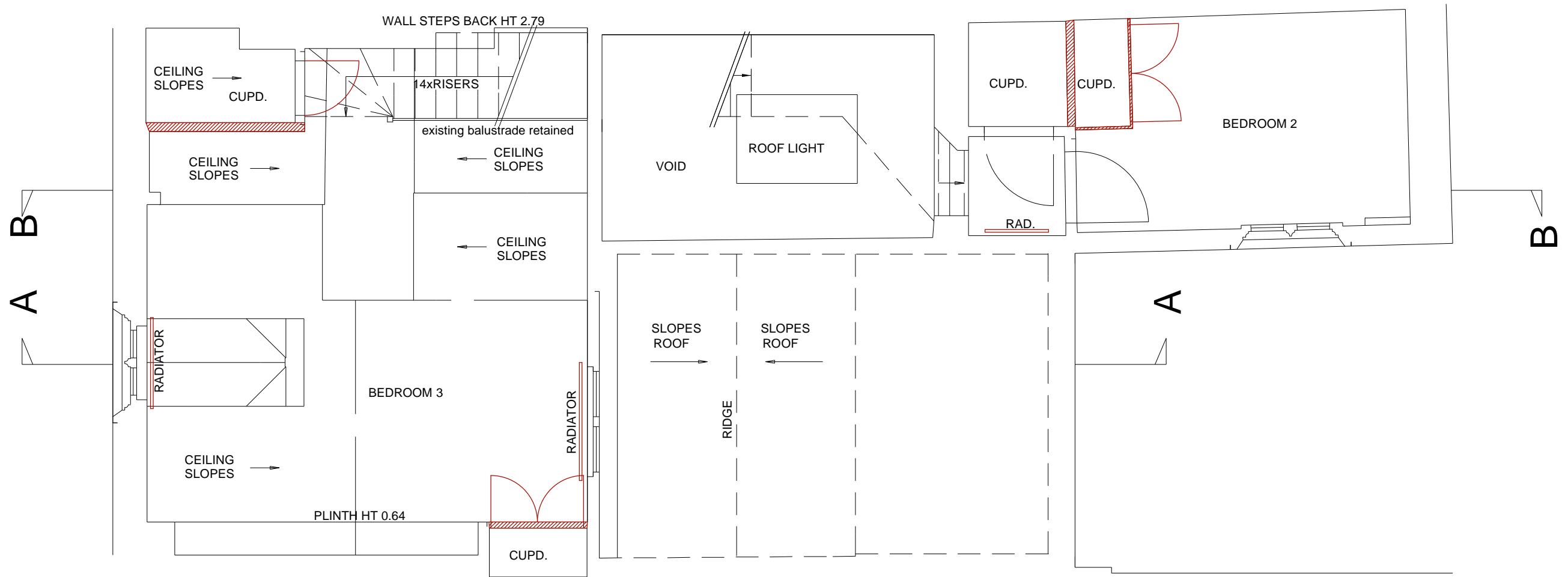
<div> crawford partnership <small>Architecture • Interior Design • Development</small></div> <div><small>1a Muswell Hill, London, N10 3TH Tel: 020 8444 2070 • Fax: 020 8444 1180 info@crawfordpartnership.co.uk www.crawfordpartnership.co.uk Company number 3499361</small></div>	GROUND FLOOR DEMOLITION PLAN		SCALE: 1:100 @ A3 1:50 @ A1	REV: A	amendments further to Conservation Officer's comments	NOTES: <div> TO BE DEMOLISHED</div>
	PROJECT: 2 ST KATHARINE'S PRECINCT	CLIENT: ADAM HUDALY		REV: B		
	DRAWING NO.: 2008-222-302	REV: A	STATUS: PLANNING	REV: C		
	DRAWN: PG	CHECKED: AC	DATE: FEB 2009	REV: D		





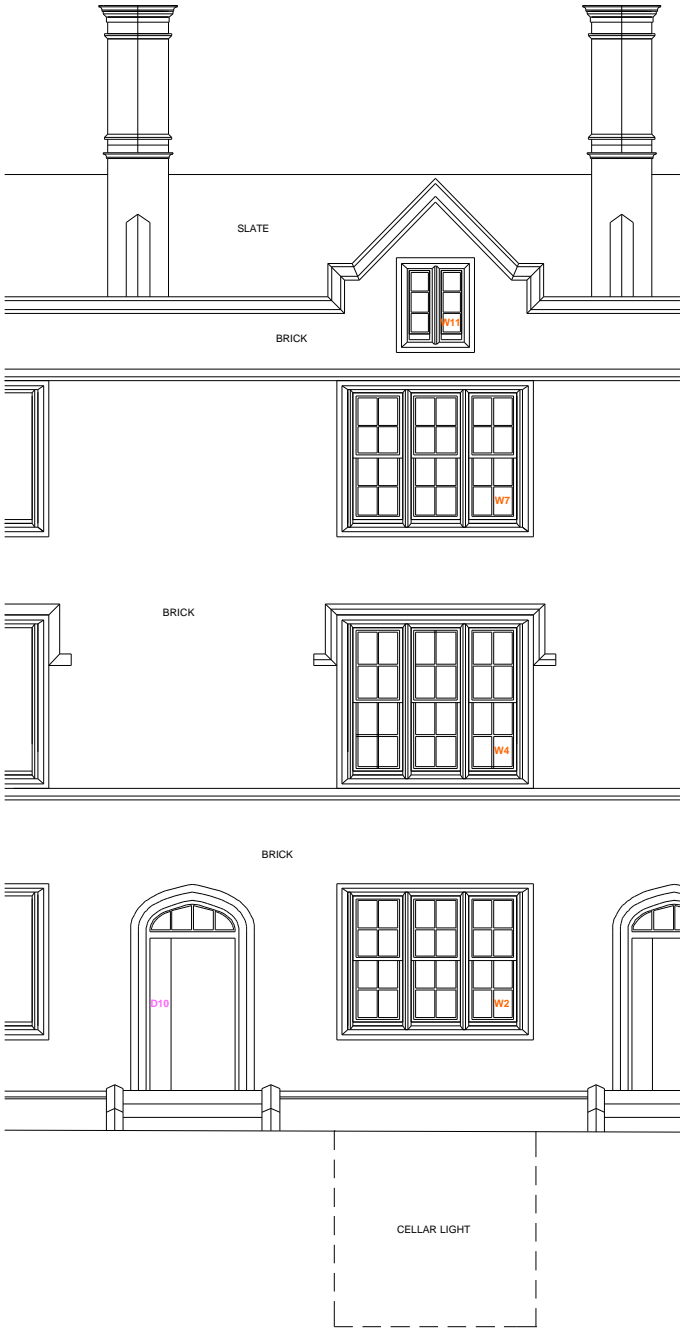
<div>crawford partnership</div> <div>Architecture • Interior Design • Development</div>	FIRST FLOOR DEMOLITION PLAN		SCALE: 1:50 @ A3 1:25 @ A1	REV: A	amendments further to Conservation Officer's comments	NOTES: <div> TO BE DEMOLISHED</div>
	PROJECT: 2 ST KATHARINE'S PRECINCT	CLIENT: ADAM HUDALY		REV: B		
	DRAWING NO.: 2008-222-303	REV: A	STATUS: PLANNING	REV: C		
	DRAWN: PG	CHECKED: AC	DATE: FEBRUARY 2009	REV: D		



 <p>crawford partnership 1a Muswell Hill, London, N10 3TH Tel: 020 8444 2070 - Fax: 020 8444 1180 info@crawfordpartnership.co.uk www.crawfordpartnership.co.uk Company number 3499361</p>	SECOND FLOOR DEMOLITION PLAN			SCALE: 1:50 @ A3 1:25 @ A1	REV: A	amendments further to Conservation Officer's comments	NOTES:  TO BE DEMOLISHED
	PROJECT:	2 ST KATHARINE'S PRECINCT	CLIENT:	ADAM HUDALY	REV: B		
	DRAWING NO.:	2008-222-304	REV:	A	STATUS:	PLANNING	
	DRAWN:	PG	CHECKED:	AC	DATE:	FEBRUARY 2009	
					REV: D		



 <p>crawford partnership 1a Muswell Hill, London, N10 3TH Tel: 020 8444 2070 · Fax: 020 8444 1180 info@crawfordpartnership.co.uk www.crawfordpartnership.co.uk Company number 3499361</p>	THIRD FLOOR DEMOLITION PLAN		SCALE: 1:50 @ A3 1:25 @ A1	REV: A	amendments further to Conservation Officer's comments	NOTES:  TO BE DEMOLISHED
	PROJECT: 2 ST KATHARINE'S PRECINCT	CLIENT: ADAM HUDALY		REV: B		
	DRAWING NO.: 2008-222-305	REV:	STATUS: PLANNING	REV: C		
	DRAWN: PG	CHECKED: AC	DATE: FEBRUARY 2009	REV: D		





FRONT ELEVATION
(AS EXISTING)



REAR ELEVATION




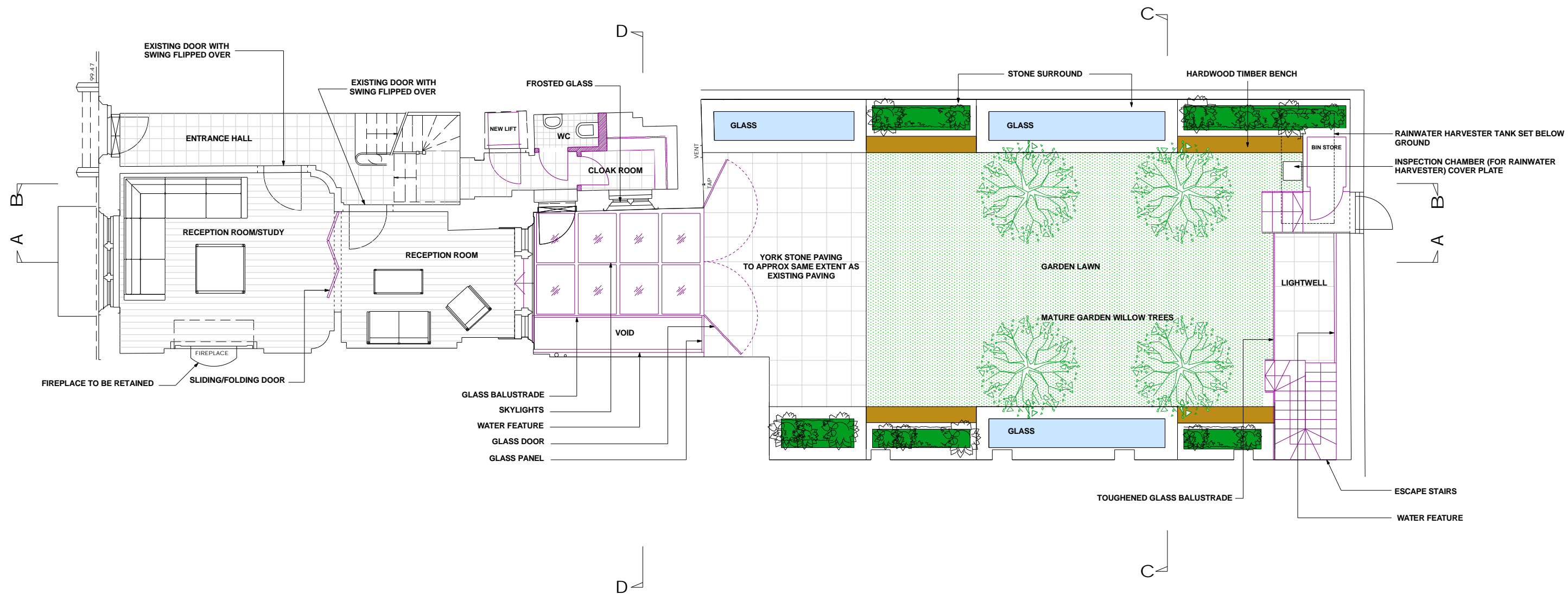
<div> crawford partnership <small>Architecture • Interior Design • Development</small></div> <div><small>1a Muswell Hill, London, N10 3TH Tel: 020 8444 2070 - Fax: 020 8444 1180 info@crawfordpartnership.co.uk www.crawfordpartnership.co.uk Company number 3499361</small></div>	FRONT AND REAR ELEVATION - DEMOLITION PLAN		SCALE: 1:100 @ A3 1:50 @ A1	REV: A	amendments further to Conservation Officer's comments	NOTES: <div> TO BE DEMOLISHED</div>
	PROJECT: 2 ST KATHARINE'S PRECINCT	CLIENT: ADAM HUDALY		REV: B		
	DRAWING NO.: 2008-222-306	REV: A	STATUS: PLANNING	REV: C		
	DRAWN: PG	CHECKED: AC	DATE: NOVEMBER 2008	REV: D		





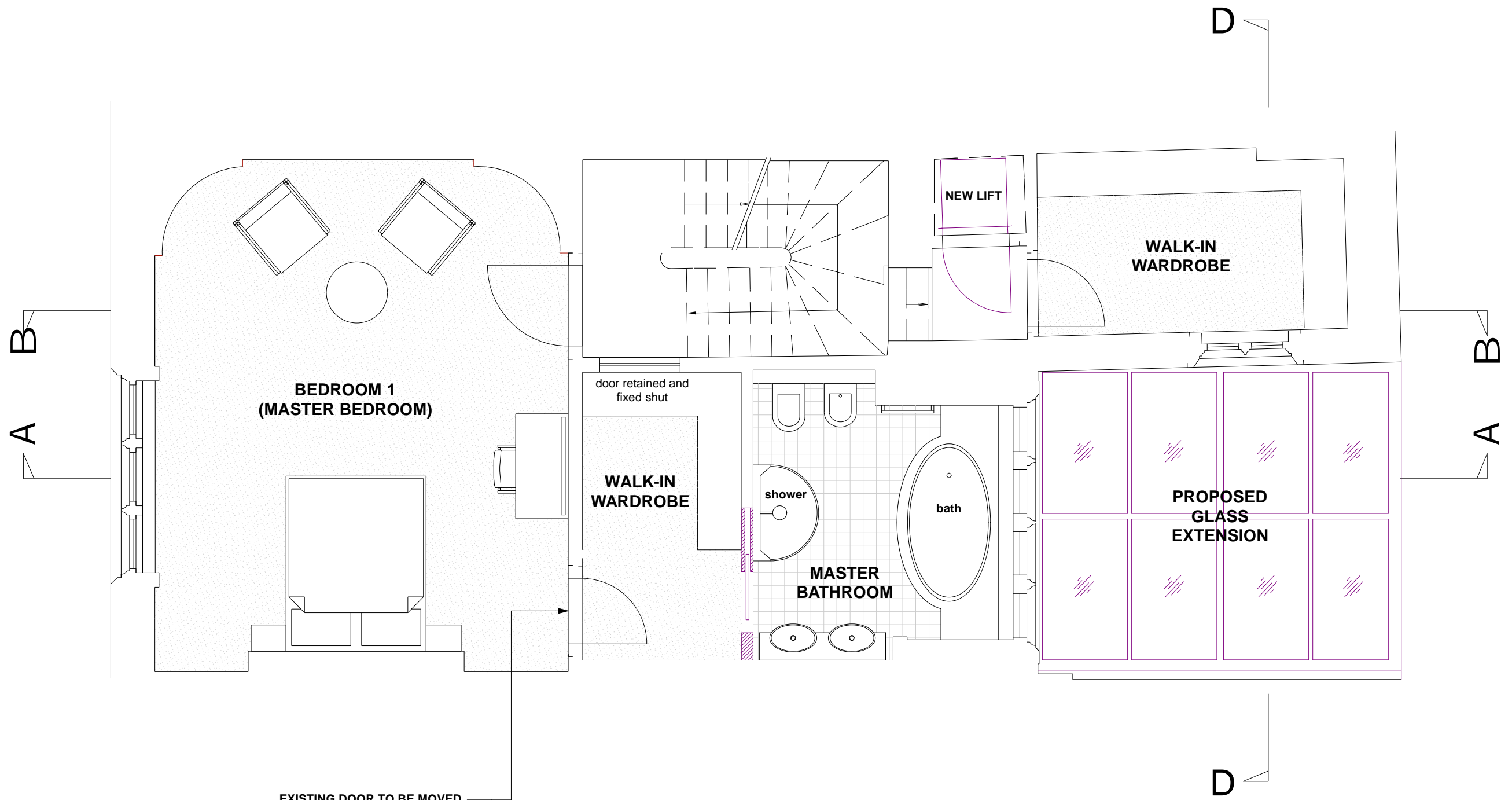
SECTION A - A





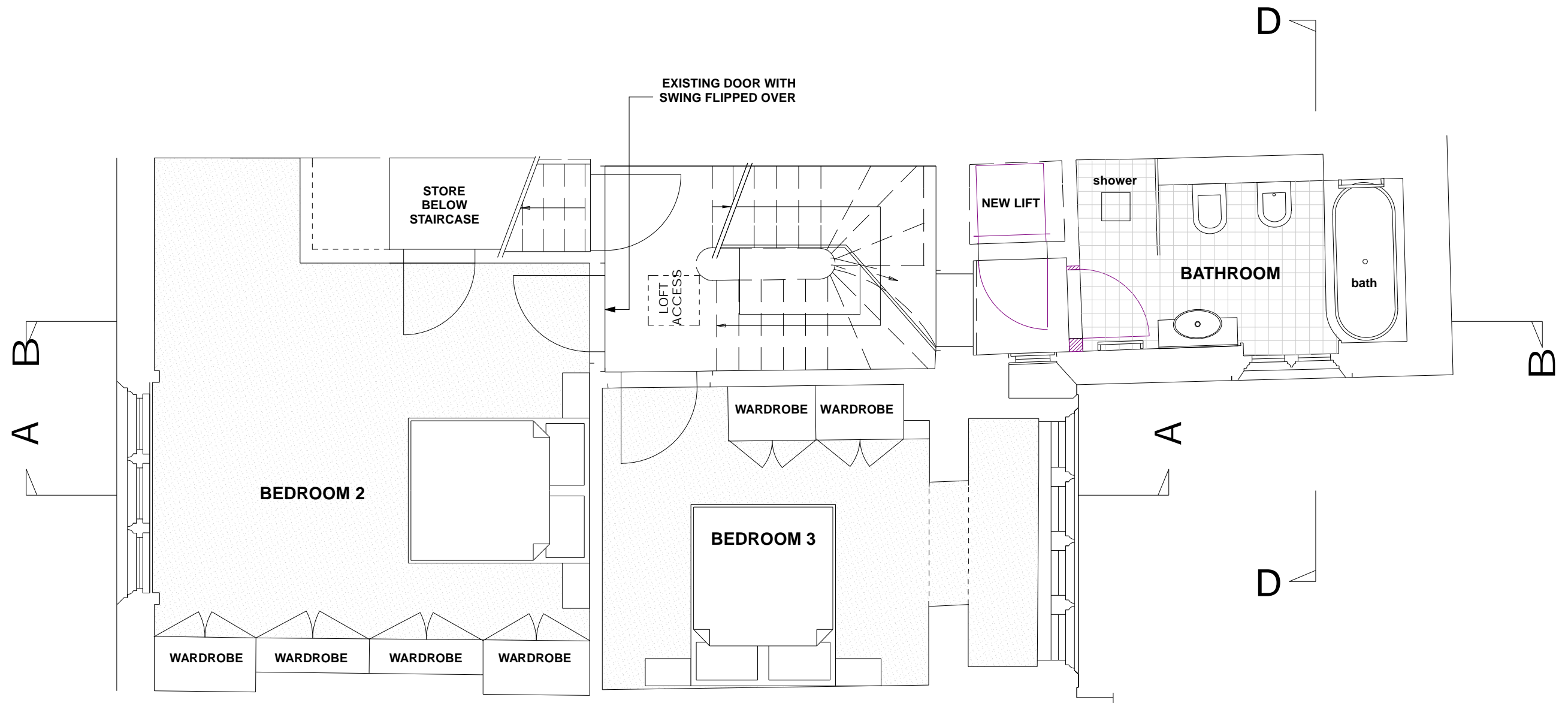
<div><div><div><div>crawford partnership</div><div>1a Muswell Hill, London, N10 3TH Tel: 020 8444 2070 - Fax: 020 8444 1180 info@crawfordpartnership.co.uk www.crawfordpartnership.co.uk Company number 3499361</div></div><div>Architecture Interior Design Development</div></div></div>	SECTION AA - DEMOLITION PLAN		SCALE: 1:100 @ A3 1:50 @ A1	REV: A	amendments further to Conservation Officer's comments	NOTES: <div><div></div>TO BE DEMOLISHED</div>
	PROJECT: 2 ST KATHARINE'S PRECINCT		CLIENT: ADAM HUDALY	REV: B		
	DRAWING NO.: 2008-222-307	REV: A	STATUS: PLANNING	REV: C		
	DRAWN: PG	CHECKED: AC	DATE: NOVEMBER 2008	REV: D		





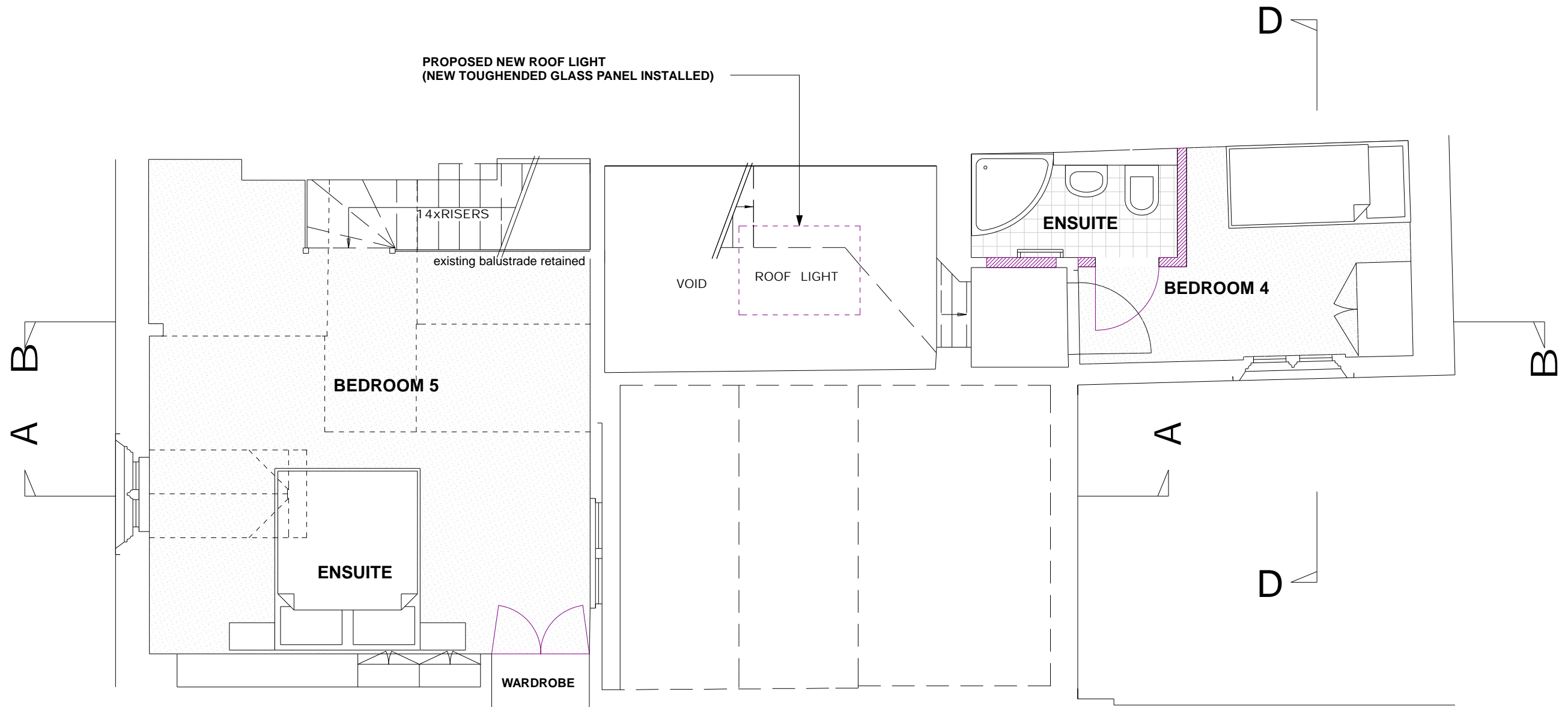
 <p>crawford partnership 1a Muswell Hill, London, N10 3TH Tel: 020 8444 2070 - Fax: 020 8444 1180 info@crawfordpartnership.co.uk www.crawfordpartnership.co.uk Company number 3499361</p>	PROPOSED GROUND FLOOR PLAN		SCALE: 1:100 @ A3 1:50 @ A1	REV: A	Planters amended in line with Conservation officers comments	NOTES:  PROPOSED
	PROJECT: 2 ST KATHARINE'S PRECINCT	CLIENT: ADAM HUDALY		REV: B	Layout amended in line with arboricultural officers comments	
	DRAWING NO.: 2008-222-402	REV: B	STATUS: PLANNING	REV: C		
	DRAWN: PG	CHECKED: AC	DATE: FEB 2009	REV: D		





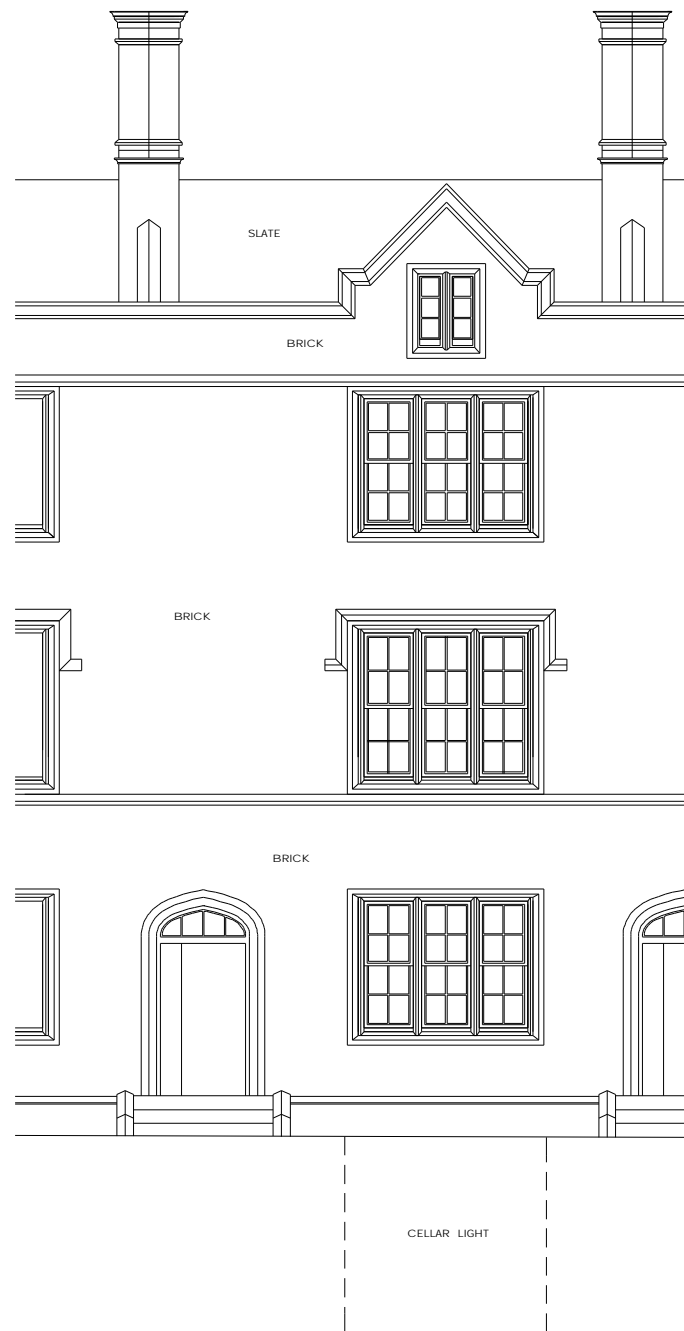
 crawford partnership <small>Architecture • Interior Design • Development</small>	PROPOSED FIRST FLOOR PLAN			SCALE: 1:50 @ A3 1:25 @ A1	REV: A	amendments further to Conservation Officer's comments	NOTES:  PROPOSED
	PROJECT: 2 ST KATHARINE'S PRECINCT	CLIENT: ADAM HUDALY			REV: B		
	DRAWING NO.: 2008-222-403	REV: A	STATUS: PLANNING		REV: C		
	DRAWN: PG	CHECKED: AC	DATE: NOVEMBER 2008		REV: D		



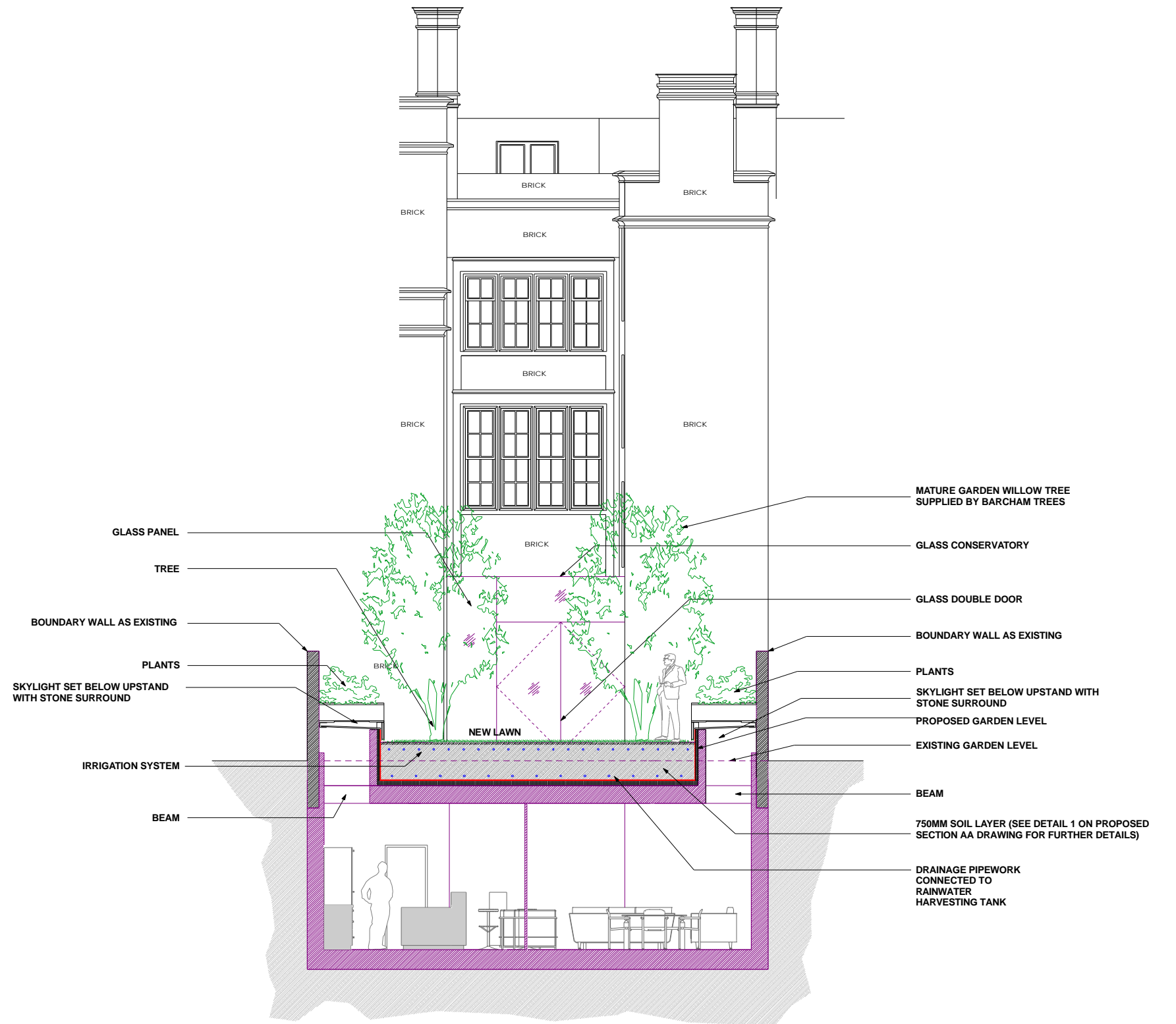
 crawford partnership <small>1a Muswell Hill, London, N10 3TH Tel: 020 8444 2070 - Fax: 020 8444 1180 info@crawfordpartnership.co.uk www.crawfordpartnership.co.uk Company number 3499361</small> <small>Architecture • Interior Design • Development</small>	PROPOSED SECOND FLOOR PLAN		SCALE: 1:50 @ A3 1:25 @ A1	REV: A	amendments further to Conservation Officer's comments	NOTES:  PROPOSED
	PROJECT: 2 ST KATHARINE'S PRECINCT	CLIENT: ADAM HUDALY		REV: B		
	DRAWING NO.: 2008-222-404	REV: A	STATUS: PLANNING	REV: C		
	DRAWN: PG	CHECKED: AC	DATE: NOVEMBER 2008	REV: D		



 <p>crawford partnership 1a Muswell Hill, London, N10 3TH Tel: 020 8444 2070 · Fax: 020 8444 1180 info@crawfordpartnership.co.uk www.crawfordpartnership.co.uk Company number 3499361</p>	PROPOSED THIRD FLOOR PLAN		SCALE: 1:50 @ A3 1:25 @ A1		REV: A	amendments further to Conservation Officer's comments	NOTES:  PROPOSED
	PROJECT:	2 ST KATHARINE'S PRECINCT	CLIENT:	ADAM HUDALY	REV: B		
	DRAWING NO.:	2008-222-405	REV:	A	STATUS:	PLANNING	
	DRAWN:	P/G	CHECKED:	AC	DATE:	NOVEMBER 2008	
					REV: D		





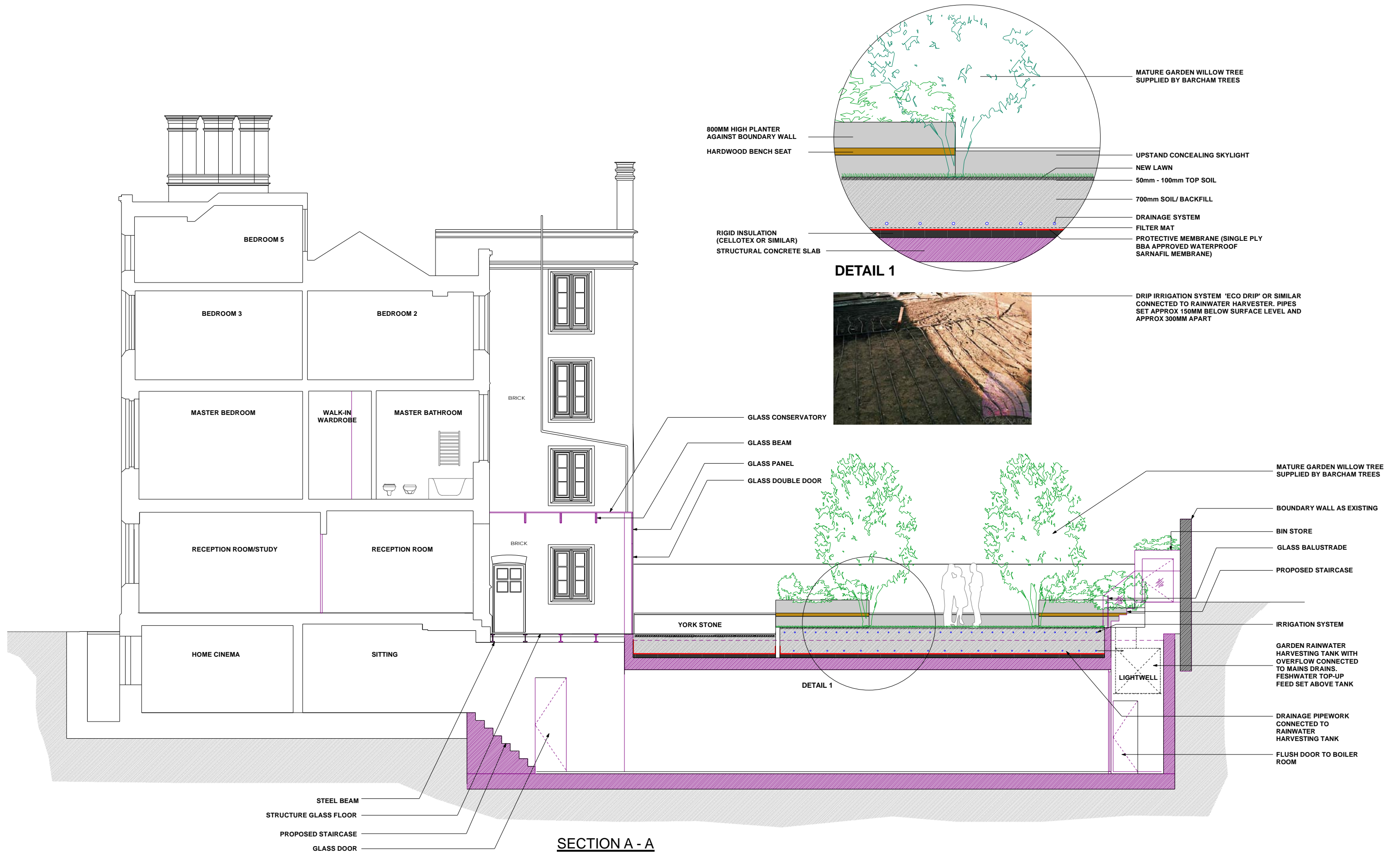
**FRONT ELEVATION
(AS EXISTING)**





**REAR ELEVATION
(SECTION CC)**



 <p>crawford partnership</p> <p>1a Muswell Hill, London, N10 3TH Tel: 020 8444 2070 · Fax: 020 8444 1180 info@crawfordpartnership.co.uk www.crawfordpartnership.co.uk Company number 3499361</p> <p>Architecture ◊ Interior Design ◊ Development</p>	PROPOSED FRONT AND REAR ELEVATION		SCALE: 1:100 @ A3 1:50 @ A1	REV: A	Planters amended in line with Conservation officers comments	NOTES:  PROPOSED
	PROJECT: 2 ST KATHARINE'S PRECINCT	CLIENT: ADAM HUDALY		REV: B	Layout amended in line with arboricultural officers comments	
	DRAWING NO.: 2008-222-406	REV: B	STATUS: PLANNING	REV: C		
	DRAWN: PG	CHECKED: AC	DATE: FEB 2009	REV: D		



 <p>crawford partnership Architecture • Interior Design • Development</p>	PROPOSED SECTION AA			SCALE: 1:100 @ A3 1:50 @ A1	REV: A	Planters amended in line with Conservation officers comments	NOTES:  PROPOSED
	PROJECT: 2 ST KATHARINE'S PRECINCT	CLIENT: ADAM HUDALY			REV: B	Layout amended in line with arboricultural officers comments	
	DRAWING NO.: 2008-222-407	REV: B	STATUS: PLANNING		REV: C		
	DRAWN: PG	CHECKED: AC	DATE: FEB 2009		REV: D		

1a Muswell Hill, London, N10 3TH
Tel: 020 8444 2070 • Fax: 020 8444 1180
info@crawfordpartnership.co.uk
www.crawfordpartnership.co.uk
Company number 3499361



GLASS CONSERVATORY

STRUCTURAL GLASS FLOOR

