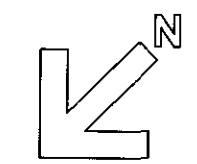

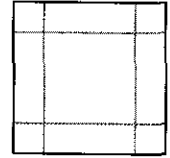
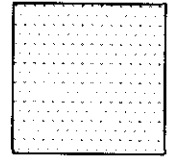
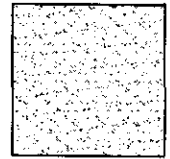
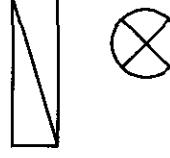
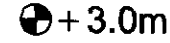


**NOTES**  
DO NOT SCALE OFF THIS DRAWING.  
ALL DIMENSIONS MUST BE CHECKED ON SITE  
PRIOR TO ANY WORK BEING PUT IN HAND.  
ANY DISCREPANCIES ARE TO BE BROUGHT TO  
THE ATTENTION OF THE PROJECT MANAGER  
IMMEDIATELY UPON DISCOVERY.

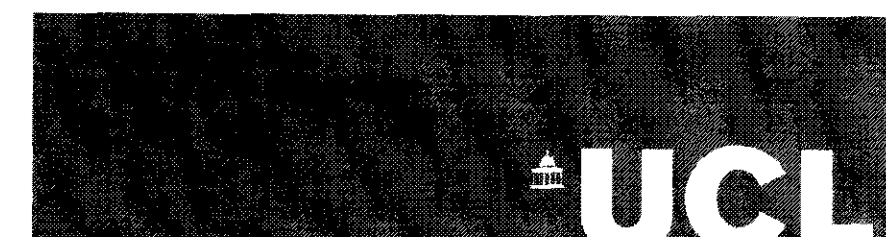


**Key**

-  Extent of refurbishment works
-  New Suspended Grid
-  Plastered re-painted soffit
-  New suspended plasterboard painted
-  New Light Fitting
-  + 3.0m Suspended Ceiling Level

PLANNING APPLICATION

P	25.03.09	Issued for Planning & Listed Building
Rev.	Date	Description



University College London  
1-19, Torrington Place, London WC1E 7HB  
Project Officer : Naweed Khan  
Tel : 020 7675 1236  
Fax : 020 7613 0524  
Email : @ucl.ac.uk  
Drawn: N.K  
Date: Feb 2009  
Scale: 1:50 @ A1  
PROJECT No. 201032

201 ROCKEFELLER BUILDING

Common Areas Refurbishment

Third Floor Reflected Ceiling Plan  
As Proposed

DWG. NO. 201032-155

P  
REV