



The Art Workers' Guild Entrance seen from Queen Square



View of Courtyard seen from the staircase landing on First Floor



View of Courtyard seen from the roof of the Hall



Roof of Guild Hall



Window in roof of Guild Hall



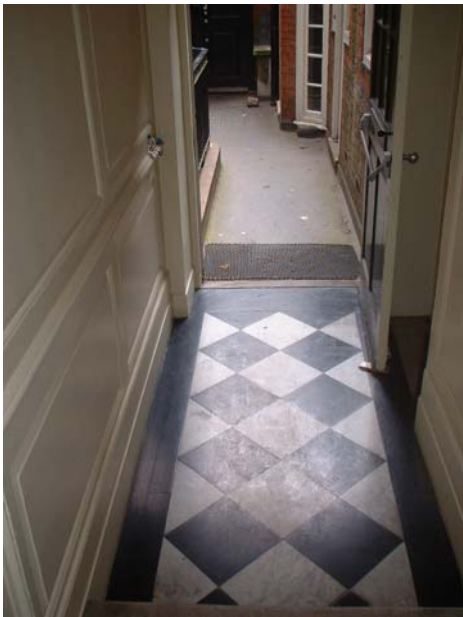
Roof of Guild Hall seen from below



Rear of building seen from the roof of the Hall



Back Entrance to main building from Courtyard



Looking into Courtyard from Back Entrance



View of closet wing on Ground Floor



Guild Hall looking towards Entrance



Internal view of Guild Hall

NOTES

date	mk	revision	own	chk
23/09/05	-	PLANNING ISSUE	JN	RK

Long & Kentish architects
27 Horsell Road London N5 1XL
telephone 020 7607 5658 facsimile 020 7607 5621

client
THE ARTWORKERS GUILD
TRUSTEES LTD

scale	date
	23/09/ 2005
drawn by JN	checked by
project THE ARTWORKERS GUILD	passed by

title
PHOTOGRAPHS OF THE EXISTING BUILDING
drawing no AWG A(00)00
revision -