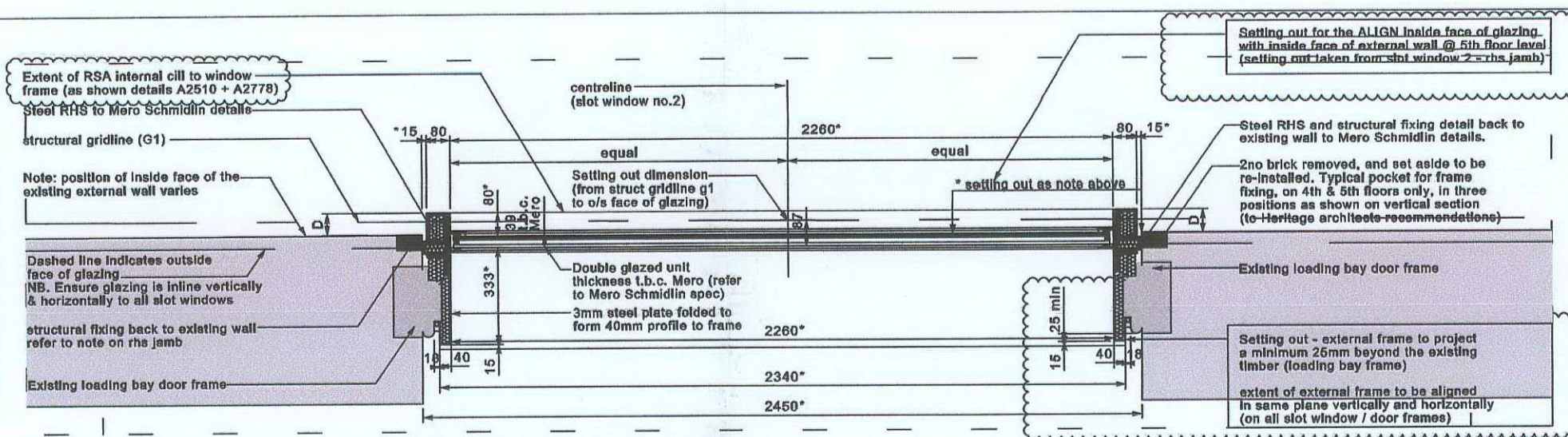


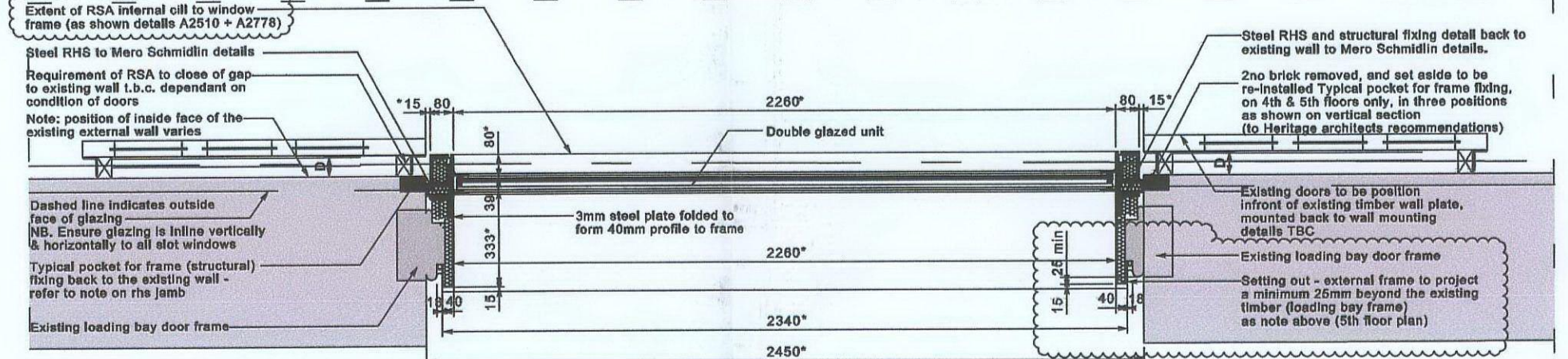
A1

- Revision 7:
- Glazing setting out amended inside face of glazing aligned with inside face of external wall - as shown on detail A2510 - slot window 2 R&S jamb - as shown on the adjacent detail
 - Ensure glazing is inline vertically & horizontally on all slot windows
 - Setting out for the external window frame to extend minimum 20mm beyond the face of the existing timber loading bay frames



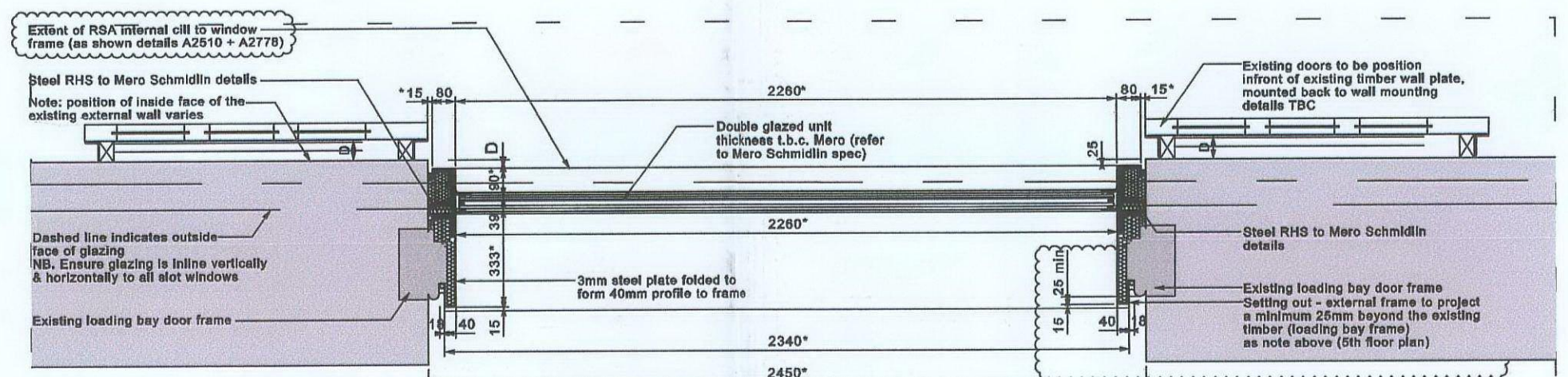
Part Detail Plan - Fifth Floor Typical Slot Window @ 1:20

+ 40.980 FFL



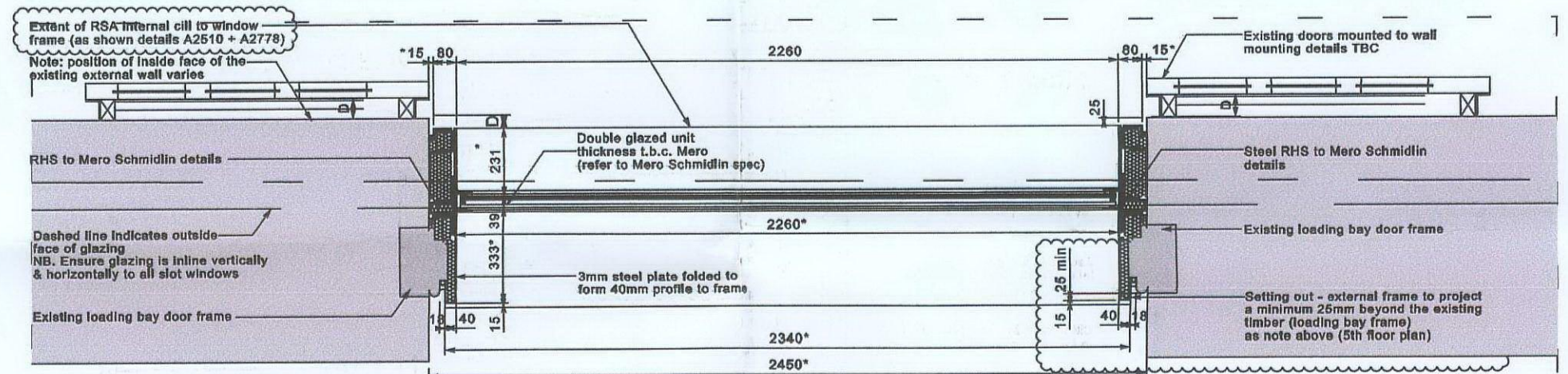
Part Detail Plan - Fourth Floor Typical Slot Window @ 1:20

+ 37.985 FFL



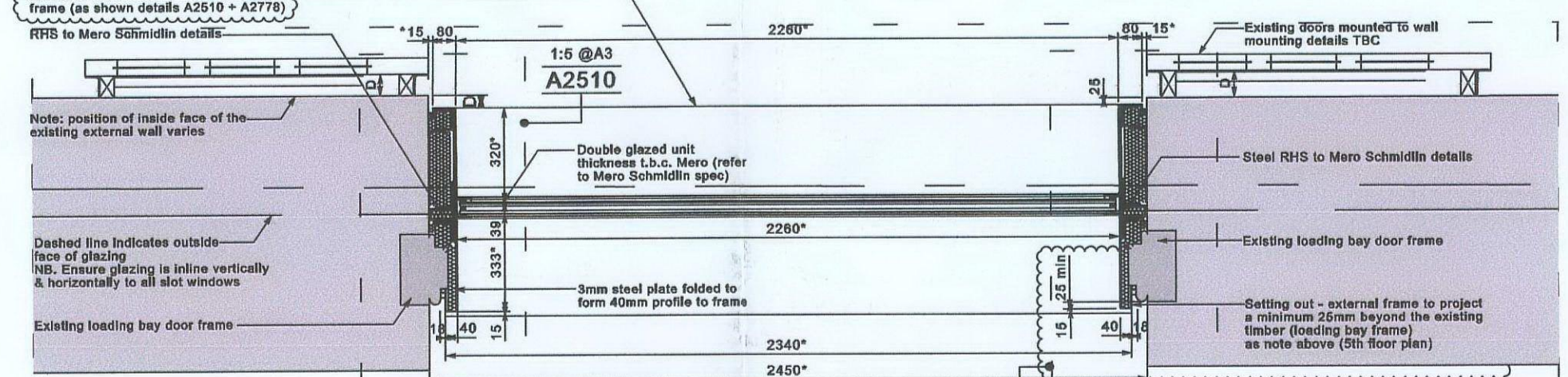
Part Detail Plan - Third Floor Typical Slot Window @ 1:20

+ 34.990 FFL



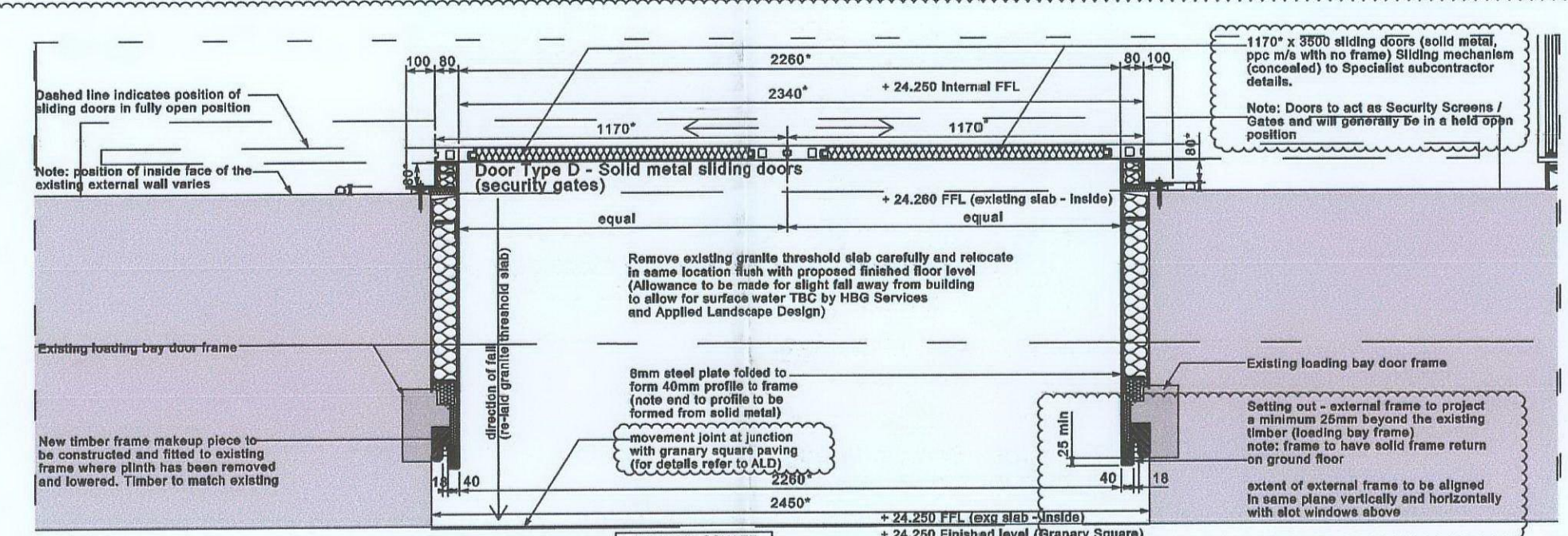
Part Detail Plan - Second Floor Typical Slot Window @ 1:20

+ 31.995 FFL



Part Detail Plan - First Floor Typical Slot Window @ 1:20

+ 29.000 FFL



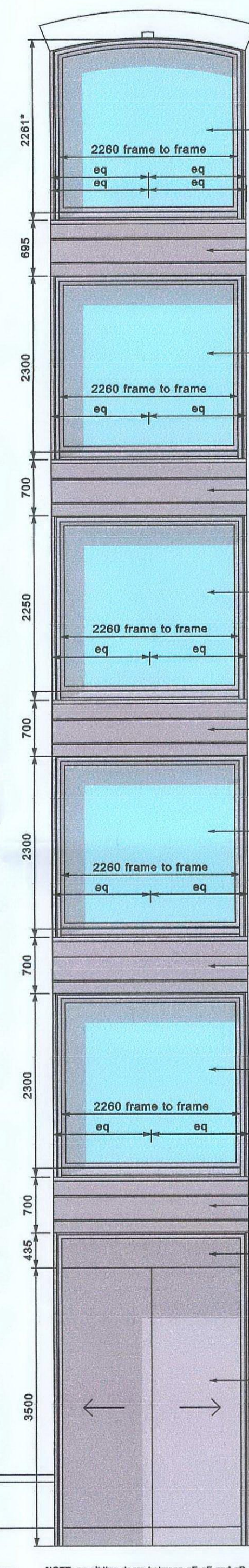
Part Detail Plan - Ground Floor Typical South Entrance @ 1:20 (shown through slot window no.2)

+ 24.250 FFL

gH gB

Part North Elevation - Typical South Entrance (shown through slot window no.2)

gF gA



NOTE: no sliding doors between gF-gE and gD-gC

Top of Existing Corridor
45.555FIFTH FLOOR
Proposed Level
40.980 FFLFOURTH FLOOR
Proposed Level
37.985 FFLTHIRD FLOOR
Proposed Level
34.990 FFLSECOND FLOOR
Proposed Level
31.995 FFLFIRST FLOOR
Proposed Level
29.000 FFLGROUND FLOOR
Proposed Level
24.250 FFL

g1

Top of Existing Corridor
45.555FIFTH FLOOR
Proposed Level
40.980 FFLFOURTH FLOOR
Proposed Level
37.985 FFLTHIRD FLOOR
Proposed Level
34.990 FFLSECOND FLOOR
Proposed Level
31.995 FFLFIRST FLOOR
Proposed Level
29.000 FFLGROUND FLOOR
Proposed Level
24.250 FFL

Part Cross Section through Typical South Entrance (shown through slot window no.2)

Copyright of this drawing is vested in the Architect and it must not be copied or reproduced without consent. Figures dimensions only are to be taken from this drawing. All contractors must verify the site and be responsible for taking and checking all dimensions relative to their work. Weedon Partnership to be advised of any variation between drawings and site conditions. IF IN DOUBT ASK DO NOT SCALE OFF THIS DRAWING

- Site dimension required
- Depth varies on each floor to accommodate staggered internal face of external wall

A2510 - typical slot window jamb detail (1:5)
A2778 - typical slot window head & sill detail (1:5)

DO NOT SCALE FROM THIS DRAWING

rev	by	date	van	chd	amendments
7	RPJ	03.03.09			Revisions as bubbled (sliding doors to be solid metal)
6	MJA	25.02.09			Revisions as bubbled
5	RPJ	17.02.09			Revisions as bubbled (fixing details to Heritage Architects recommendations)
4	RPJ	03.02.09			Revisions as bubbled (glazing setting out updated)
3	RPJ	25.01.09			Revisions as bubbled
2	RPJ	21.01.09			Updated to reflect Mero Schmidlin details
1	MJA	02.12.08			Updated to reflect Mero Schmidlin details
0	MJA	03.11.08			ISSUED FOR CONSTRUCTION
B	MJA	06.10.08			Revisions as bubbled
A	MJA	01.09.08			V.E. AMENDMENTS
-	MJA	07.03.08			FOR COMMENT

Revisions as bubbled (sliding doors to be solid metal)

Revisions as bubbled

Revisions as bubbled (fixing details to Heritage Architects recommendations)

Revisions as bubbled (glazing setting out updated)

Revisions as bubbled

Updated to reflect Mero Schmidlin details

Updated to reflect Mero Schmidlin details

ISSUED FOR CONSTRUCTION

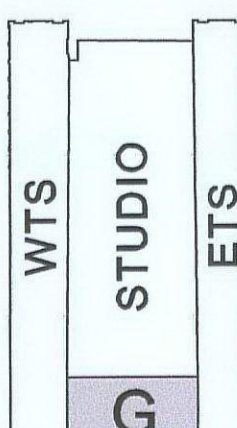
Revisions as bubbled

V.E. AMENDMENTS

FOR COMMENT



key plan



weedonpartnership architects

Quadrant Court
47-48 Calthorpe Road
Edgbaston
Birmingham
B15 1TH

T 0121 454 4171
F 0121 455 9152
www.weedonpartnership.co.uk
architects@weedonpartnership.co.uk

BIW reference
15900-G-A1612

project

ARGENT ESTATES LTD.
EGY KINGS CROSS

title

CONTRACT NO. 1
GRANARY BUILDING
PROPOSED SLOT WINDOWS
PART SECTIONS 1-1 & 2-2

drawing status

CONSTRUCTION

contract no.

scale 1:50 @ A1

client ref.

date MAR 2008

drawn by

MJA

checked by

drawing no

15900

G

A1612

7

2009/1499/L