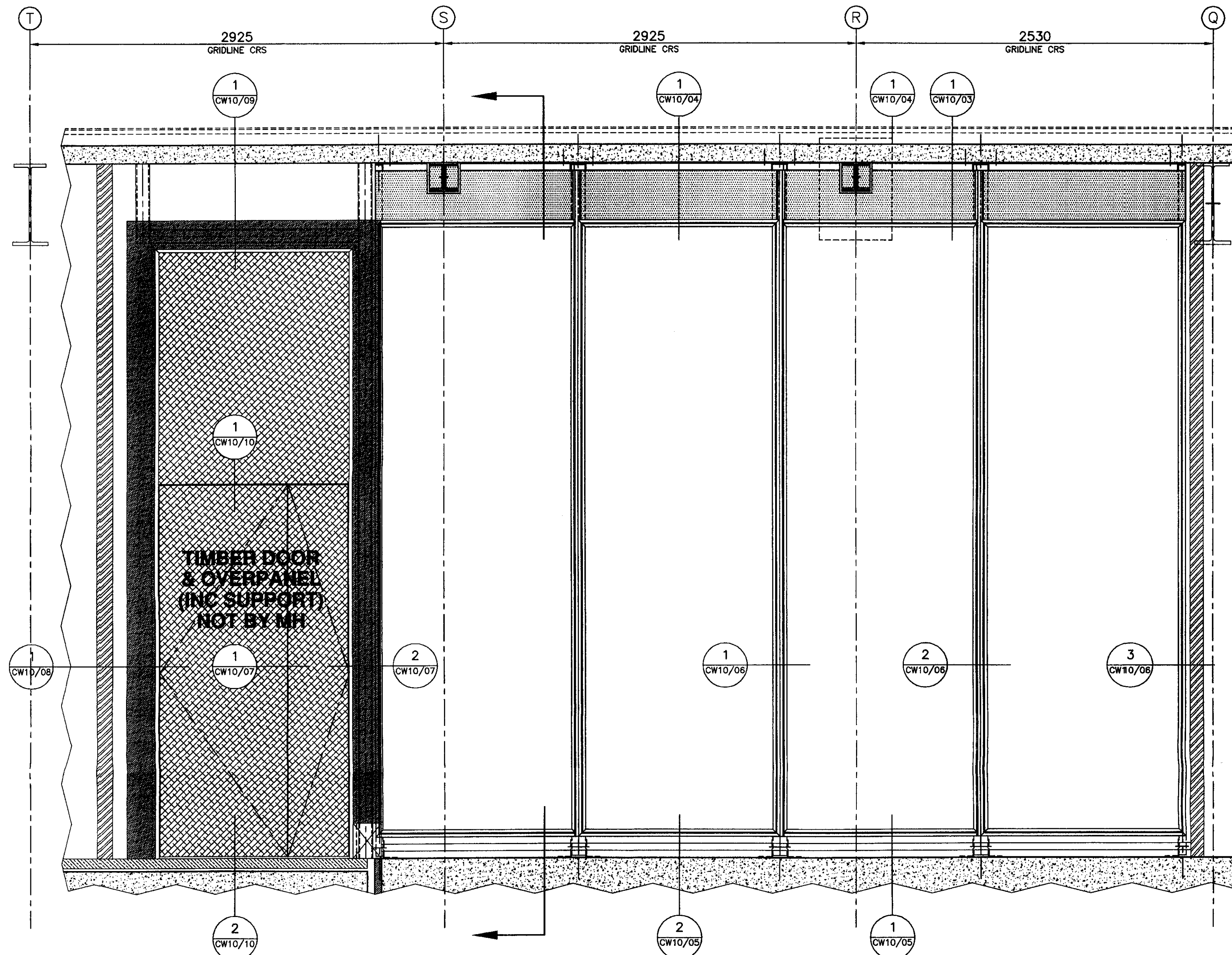


NOTE:  
PRESSING JOINT  
MUST REMAIN DUE  
TO MANUFACTURING  
LIMITATIONS FOR  
PRESSED METALWORK

**VERTICAL SECTION**  
THROUGH FIXED GLASS



**PART 'CW10' ELEVATION [RH SCREEN]**  
TO SHOW FRAMEWORK LAYOUT

**CW10 SPECIFICATION:**

**GLASS:**

34.8mm THK DOUBLE GLAZED UNITS COMPRISING:  
12.8mm THK CLEAR LAMINATE – INNER  
16mm THK BLACK AIR FILLED SPACER  
6mm THK CLEAR HEAT STRENGTHENED – OUTER

**CURTAIN WALL SYSTEM:**

STANDARD 'CELL' GLAZING CURTAIN WALL SYSTEM  
ADAPTED TO SUIT MULLION 'STEP' DETAIL...  
FINISH: DARK BRONZE ANODISED (SEEN FACES ONLY)

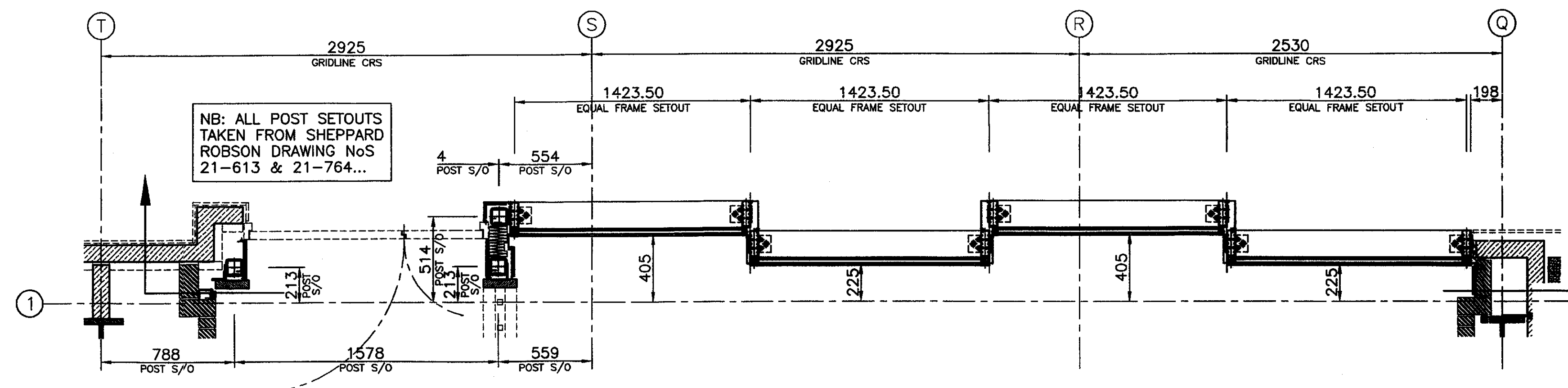
**DOOR SYSTEM:**

STANDARD 'FENSTER' SYSTEM 66 DOOR PROFILES  
FINISH: DARK BRONZE ANODISED (SEEN FACES ONLY)

**METALWORK:**

BRACKETS GENERALLY 6/8mm THK ALUMINIUM (UNO)  
FINISH: MILL (UNSEEN)

PRESSINGS GENERALLY 2mm THK ALUMINIUM (UNO)  
FINISH: DARK BRONZE ANODISED (SEEN FACES ONLY)



NB: ALL POST SETOUTS  
TAKEN FROM SHEPPARD  
ROBSON DRAWING NoS  
21-613 & 21-764...

**PLAN SECTION**

CURRENT DRAWING STATUS  
**FOR CONSTRUCTION**

Revision	Date	Amendment	Scale
A	18/03/09	REVISED AS COMMENTS	1 : 20 @ A1
Drawn By	SPJ	Date	02/09
Section Ldr.		Date	
Title			
TYPE CW10 – WEST ELEVATION ELEVATION & LAYOUT			
Contract			
SOUTHAMPTON ROW LONDON			
Architect			
SHEPPARD ROBSON			
Contractor			
BOVIS LEND LEASE			
MagHansen			
hansen fenestration engineers			
Tel (0113)2555111 Fax (0113)2551946			
Email : design@maghansen.co.uk			
Drg.No.	C1679-CW10- 01	Revision	A