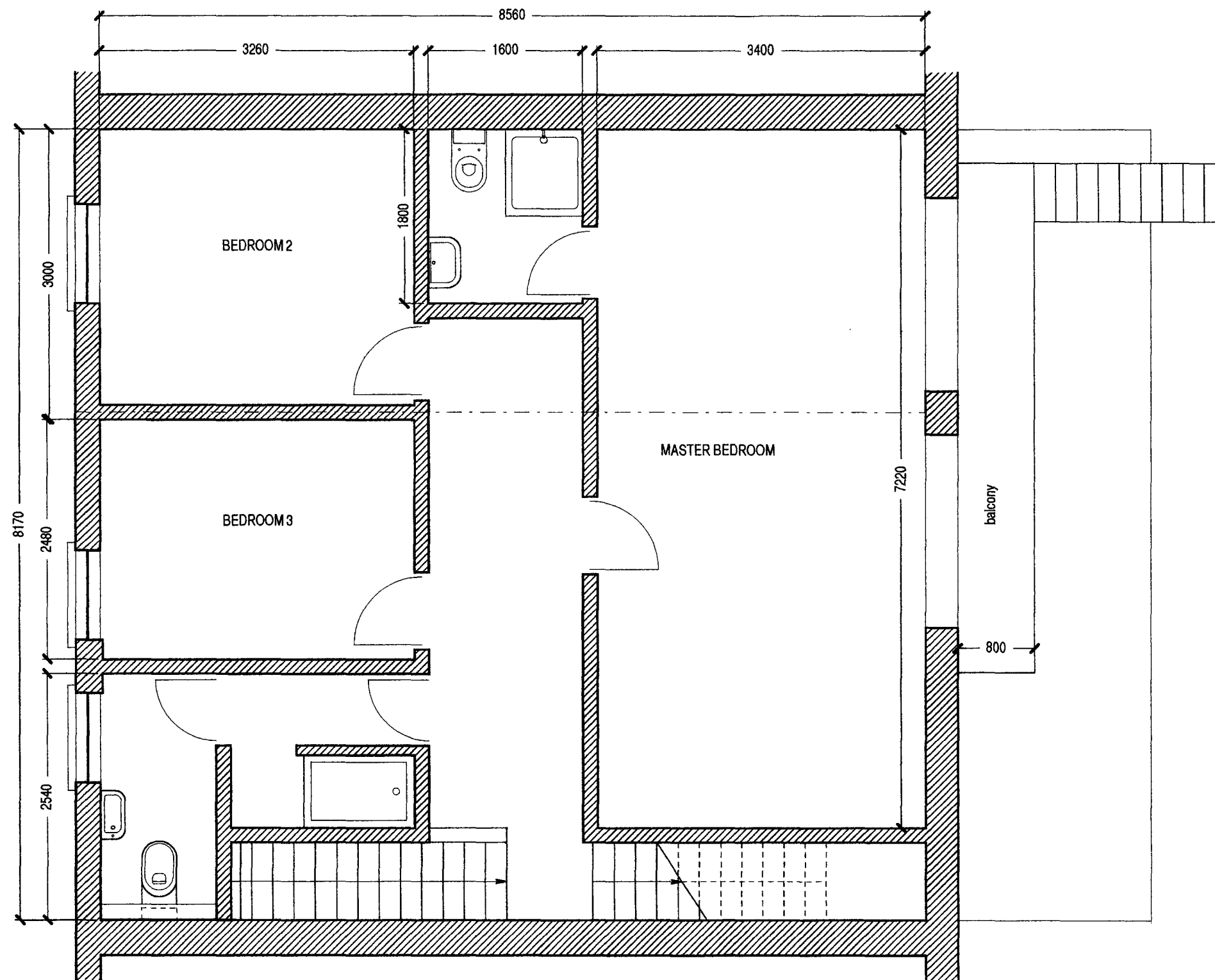


GROUND FLOOR as proposed

RECEIVED 5 MAY 2009

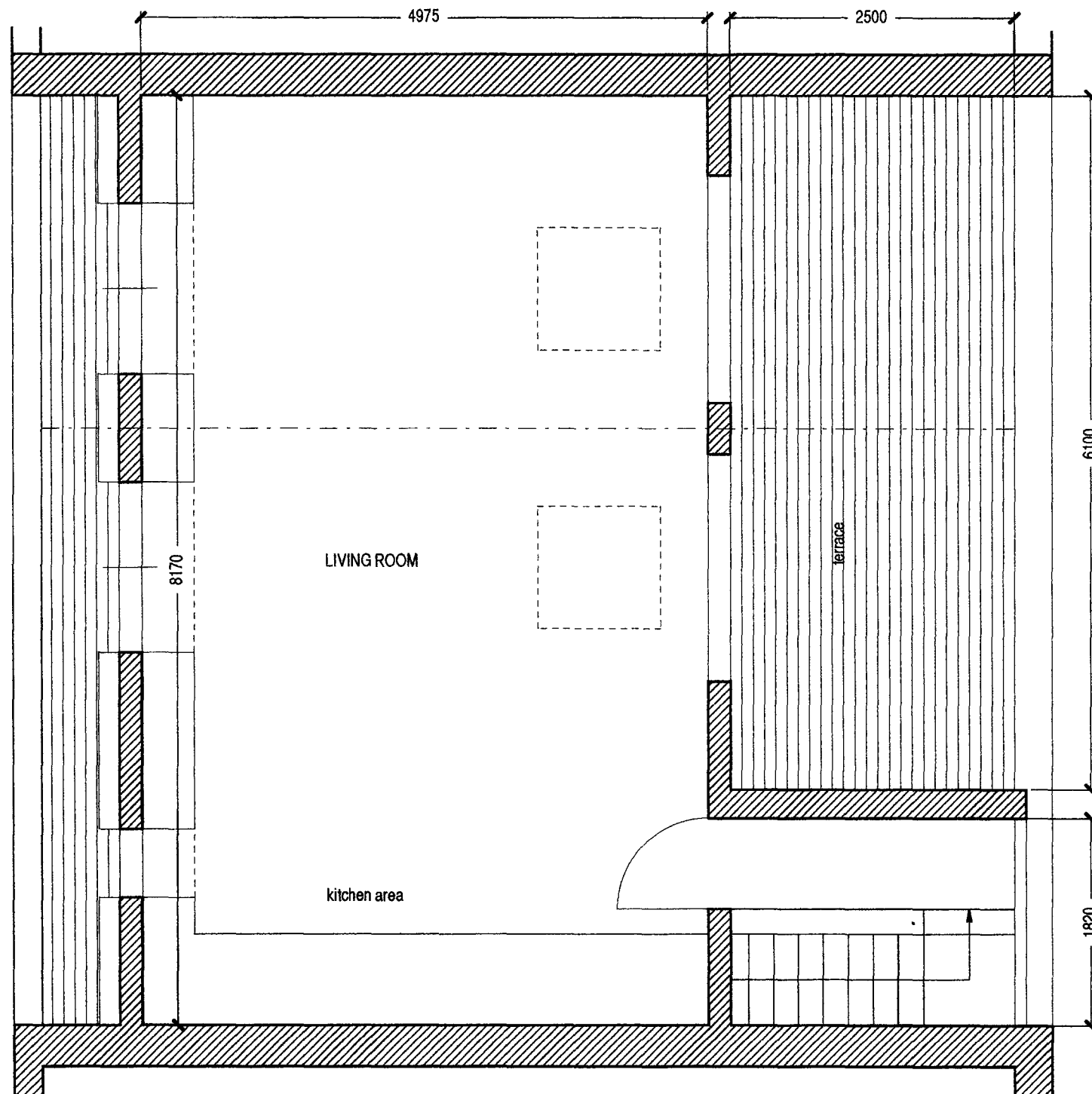
DO NOT SCALE ANY ALTERATIONS TO THIS DRAWING MUST BE APPROVED BY THE ARCHITECT	Joanna Eagle RIBA 7 Merton Mews London SW5 0TE telephone 020 7573 9835 e-mail joanna@zen.co.uk	PROPOSED ALTERATIONS TO 37 JOHN'S MEWS, LONDON, WC1N 2NS	1:100	NOV 2008	A	JHN A110
		GROUND FLOOR PLAN (GARAGE / UTILITY)- as PROPOSED	PLANNING	7 May 2009		



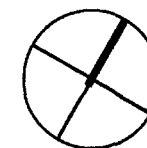
FIRST FLOOR: as proposed

RECEIVED 2009 MAY 7 2009

DO NOT SCALE ANY ALTERATIONS TO THIS DRAWING MUST BE APPROVED BY THE ARCHITECT		Joanna Eade RIBA 7 Morton Mews London SW5 0TE telephone 020 7373 9035 e-mail joanna@zen.co.uk	PROPOSED ALTERATIONS TO 37 JOHN'S MEWS, LONDON, WC1N 2NS		1:50	NOV 2008	A	JHN A111
			FIRST FLOOR PLAN - as PROPOSED		PLANNING	7 May 2009		

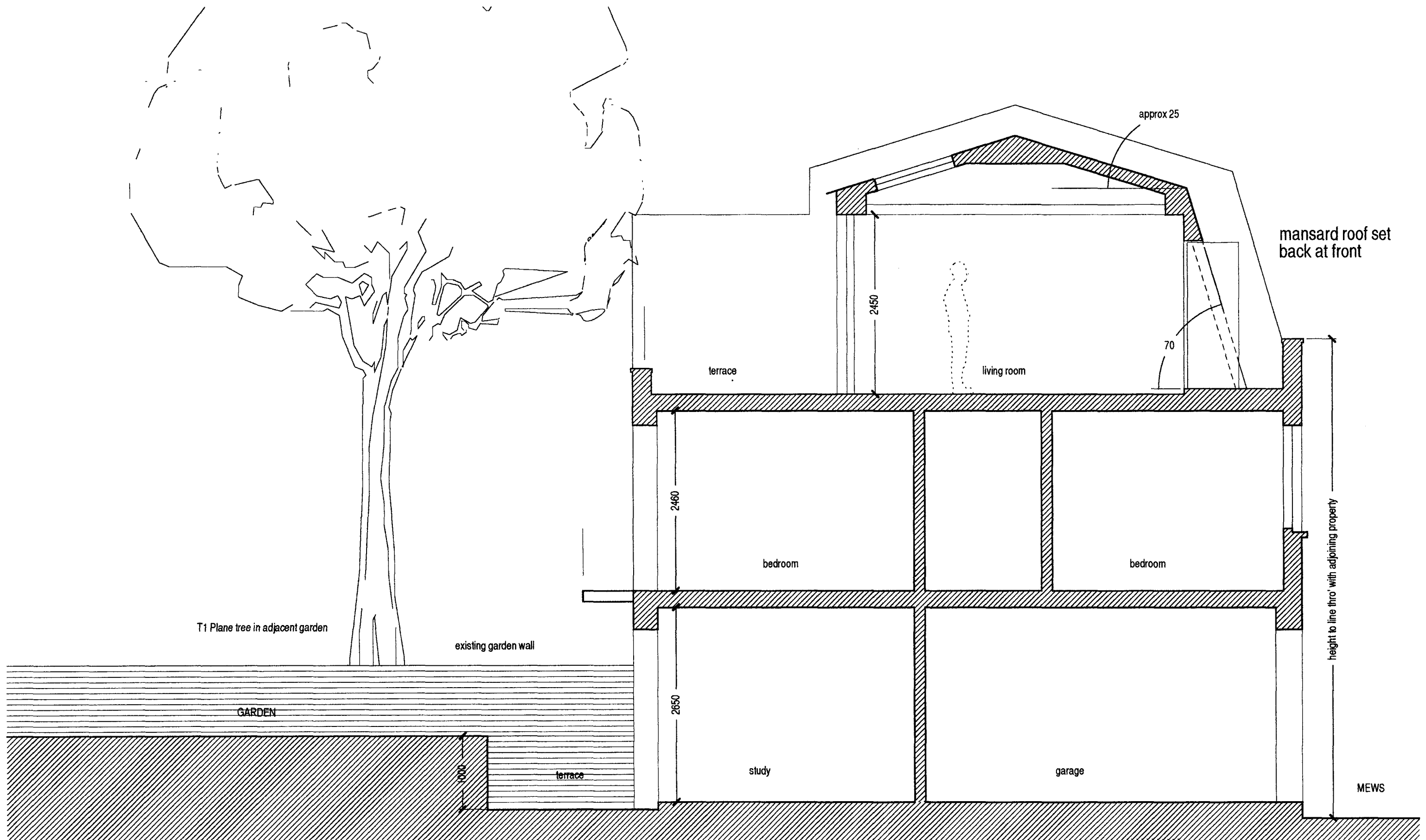


SECOND FLOOR: as proposed



5/2/2009 10:00:00 AM

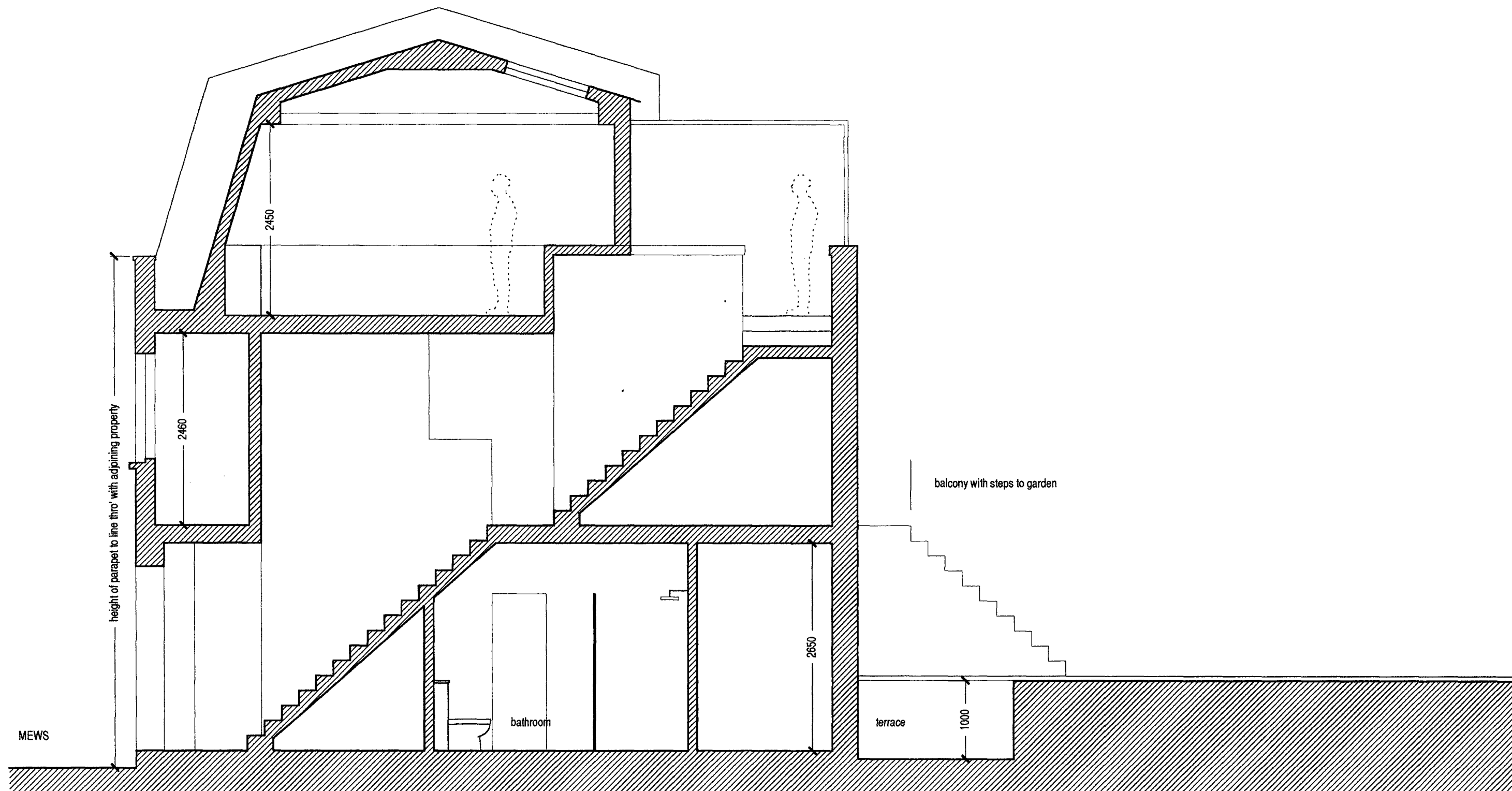
DO NOT SCALE ANY ALTERATIONS TO THIS DRAWING MUST BE APPROVED BY THE ARCHITECT		Joanna Eade RIBA 7 Morton Mews London SW5 0TE telephone 020 7573 9035 e-mail jaeade@zen.co.uk	PROPOSED ALTERATIONS TO 37 JOHN'S MEWS, LONDON, WC1N 2NS		1:100	NOV 2008	A	JHN A112
			SECOND FLOOR PLAN - as PROPOSED		PLANNING	7 May 2009		



CROSS SECTION
as proposed

RECEIVED 10/11/08

DO NOT SCALE ANY ALTERATIONS TO THIS DRAWING MUST BE APPROVED BY THE ARCHITECT	Joanna Eade RIBA 7 Morton Mews London SW5 0TE telephone 020 7373 0035 e-mail j_eade@zen.co.uk	PROPOSED ALTERATIONS TO 37 JOHN'S MEWS, LONDON, WC1N 2NS	1:100	NOV 2008	A	JHN A115
		CROSS SECTION - as PROPOSED	PLANNING	7 MAY 2009		



CROSS SECTION THRO' STAIR
as proposed

Approved by Council 10/11/09

DO NOT SCALE ANY ALTERATIONS TO THIS DRAWING MUST BE APPROVED BY THE ARCHITECT		Joanna Eade RIBA 7 Merton Mews London SW5 0TE telephone 020 7373 9035 e-mail j.eade@zen.co.uk	PROPOSED ALTERATIONS TO 37 JOHN'S MEWS, LONDON, WC1N 2NS	1:100	NOV 2008	A	JHN A116
			CROSS SECTION THRO' STAIR - as PROPOSED	PLANNING	7 MAY 2009		



FRONT ELEVATION: as proposed

RECEIVED 10 MAY 2009

DO NOT SCALE ANY ALTERATIONS TO THIS DRAWING MUST BE APPROVED BY THE ARCHITECT		Joanna Earle RIBA 7 Morton Mews London SW5 0TE telephone 020 7373 8035 e-mail j.earle@zen.co.uk	PROPOSED ALTERATIONS TO 37 JOHN'S MEWS, LONDON, WC1N 2NS	1:50	NOV 2008	A	JHN A120
			FRONT ELEVATION - as proposed	PLANNING	7 May 2009		



RECEIVED 10 MAY 2009

DO NOT SCALE ANY ALTERATIONS TO THIS DRAWING MUST BE APPROVED BY THE ARCHITECT	Joanna Eade RIBA 7 Merton Mews London SW5 0TE telephone 020 7373 9035 e-mail j.eade@zen.co.uk	PROPOSED ALTERATIONS TO 37 JOHN'S MEWS, LONDON, WC1N 2NS	1:50	NOV 2008	A	JHN A121
		REAR ELEVATION - as proposed	PLANNING	7 May 2009		