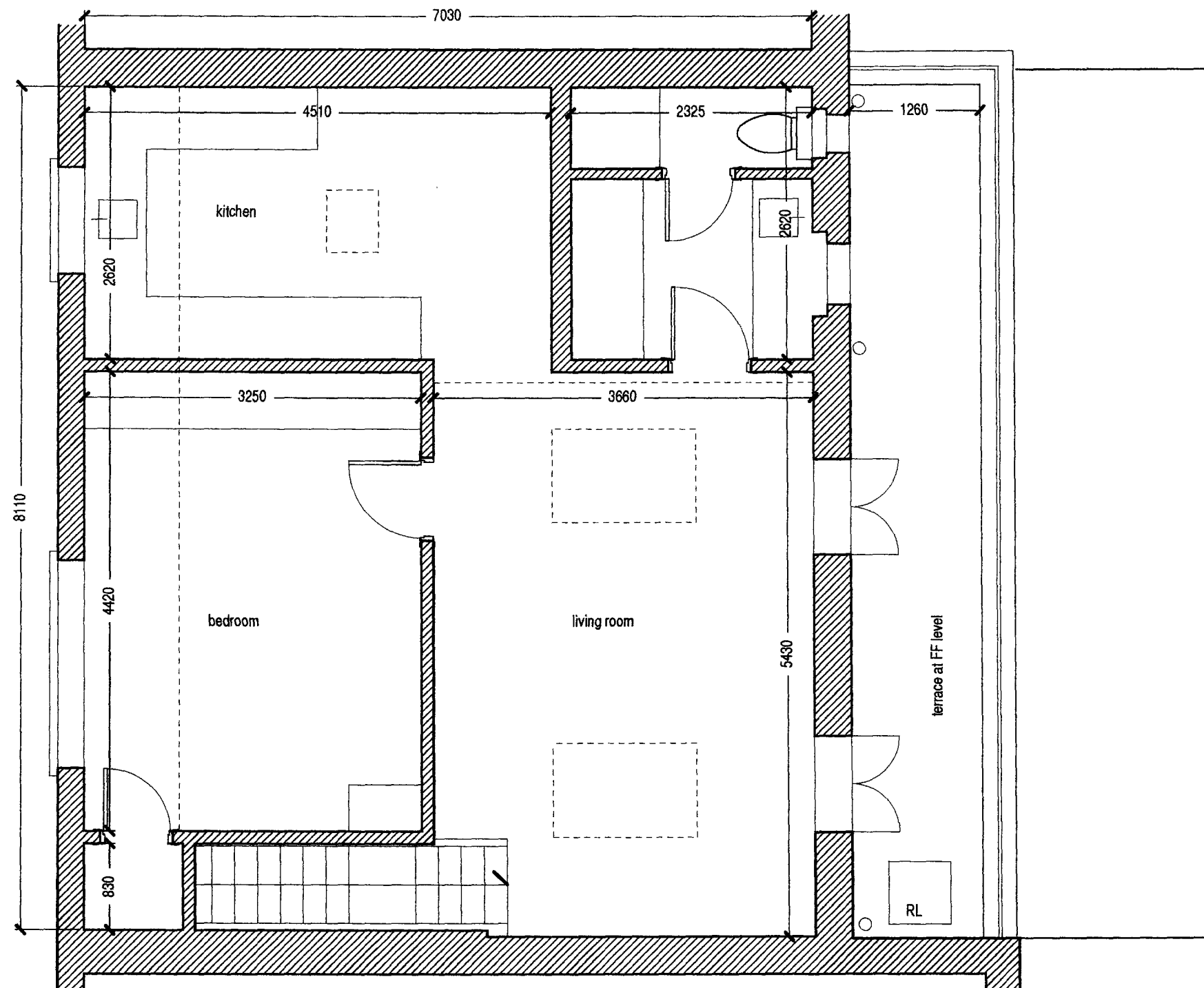
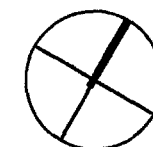


RECEIVED 08 MAY 2009

DO NOT SCALE ANY ALTERATIONS TO THIS DRAWING MUST BE APPROVED BY THE ARCHITECT		Joanna Eade RIBA 7 Morton Mews London SW5 8TE telephone 020 7373 8035 e-mail j.eade@eeh.co.uk	PROPOSED ALTERATIONS TO 37 JOHN'S MEWS, LONDON, WC1N 2NS GROUND FLOOR PLAN - as EXISTING	1:50 PLANNING	NOV 2008 7 May 2009	A	JHN A10
--	--	--	--	----------------------	----------------------------	---	------------

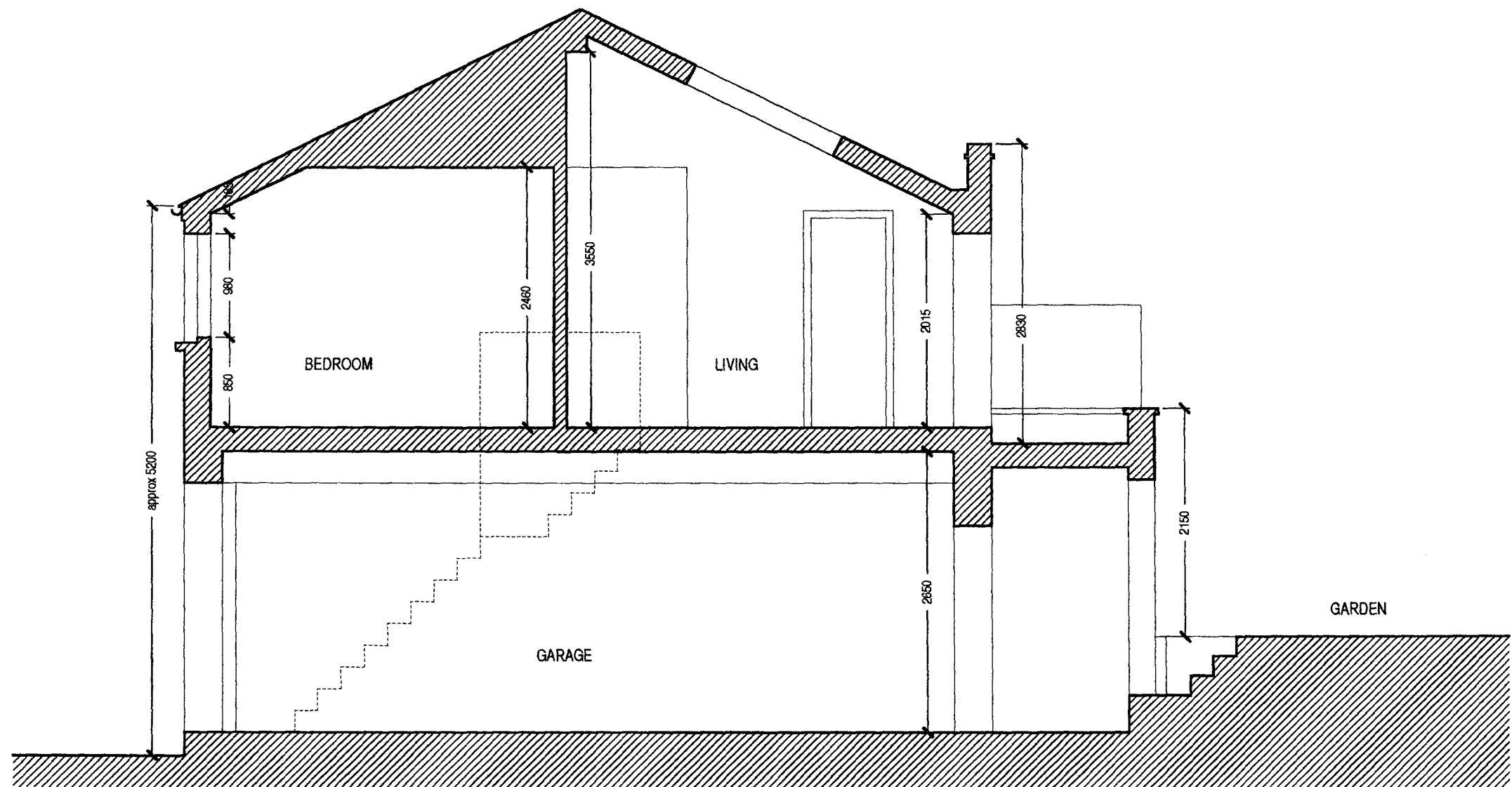


FIRST FLOOR PLAN
as existing



RECEIVED 06 MAY 2009

DO NOT SCALE ANY ALTERATIONS TO THIS DRAWING MUST BE APPROVED BY THE ARCHITECT		Joanna Ende RIBA 7 Morton Mews London SW5 0TE telephone 020 7373 9035 e-mail j.ende@zen.co.uk	PROPOSED ALTERATIONS TO 37 JOHN'S MEWS, LONDON, WC1N 2NS	1:50	NOV 2008	A	JHN A11
			FIRST FLOOR PLAN - as EXISTING	PLANNING	7 May 2009		



CROSS SECTION
as existing

RECEIVED 09 MAY 2009

DO NOT SCALE ANY ALTERATIONS TO THIS DRAWING MUST BE APPROVED BY THE ARCHITECT		Joanna Ende RIBA 7 Morton Mews London SW5 0TE telephone 020 7373 8035 e-mail j.ende@zen.co.uk	PROPOSED ALTERATIONS TO 37 JOHN'S MEWS, LONDON, WC1N 2NS	1:50	NOV 2008	A	JHN A15
			CROSS SECTION - as existing	PLANNING	7 MAY 2009		



37 John Mews

FRONT ELEVATION
as existing

RECEIVED 08 MAY 2009

DO NOT SCALE ANY ALTERATIONS TO THIS DRAWING MUST BE APPROVED BY THE ARCHITECT		Joanna Eade RIBA 7 Morton Mews London SW5 0TE telephone 020 7373 0035 e-mail joade@zen.co.uk	PROPOSED ALTERATIONS TO 37 JOHN'S MEWS, LONDON, WC1N 2NS	1:100	NOV 2008	A	JHN A20
			FRONT ELEVATION - as existing	PLANNING	7 May 2009		



REAR ELEVATION
as existing

RECEIVED 08 MAY 2009

DO NOT SCALE ANY ALTERATIONS TO THIS DRAWING MUST BE APPROVED BY THE ARCHITECT	Joanna Ende RIBA 7 Norton Mews London SW5 0TE telephone 020 7373 0035 e-mail joanna@zen.co.uk	PROPOSED ALTERATIONS TO 37 JOHN'S MEWS, LONDON, WC1N 2NS	1:50	NOV 2008	A	JHN A21
		REAR ELEVATION - as existing	PLANNING	7 MAY 2009		