

FL10 Solar 'Multi-Purpose' 144 LED Floodlight / Sign Light

83

TECHNICAL SPECIFICATIONS

Heavy duty, weatherproof floodlight head (adjustable tilt for accurate aiming).

144 hyper-bright LED's providing approx. 200 watts of light.

24 volt dc system.

Two, high capacity 12 volt 18 Amp/Hr sealed lead acid batteries are supplied.

Batteries must be connected together in series.

A remote battery box is supplied to accommodate the batteries.

The battery box has a built-in photocell (light sensor) for automatic night time operation.

The battery box has a hinged lid which is lockable (padlock not included).

The battery box has an integral battery shelf and also houses the PCB controller.

Approx. 5 metres (17') of pre-wired connection cable is supplied and attached to the battery box for connection to the solar panel.

The battery box also has a socket for each floodlight to be connected.

High quality, aluminium framed, powerful 30 watt solar panel fitted with approximately 46cm (18") of cable/cord with weatherproof connector which connects directly to the battery box with approx. 5 metres (17') of cable.

A powerful 30 Watt solar panel is included which can be directly mounted if required.

Two special mounting frames are included to allow the solar panel to attach to a vertical or horizontal surface with two hole pre-drilled into each section of the frame.

The weather resistant floodlight has approx. 14.5 metres (48') of pre-wired cable which is pre-plugged ready for easy connection to the battery box.

All connections are simply plug & play.

The floodlight is weather rated to I.P 65. and is fitted with a U shape mounting bracket.

Black coloured finish of floodlight.

All other parts are of a grey coloured finish.

Normal operating range is -20 deg. C to + 60 deg. C.

Easy to install almost anywhere.

The floodlight is supplied with a U shape mounting bracket which will also allow for vertical adjustment of the light beam spread.

Floodlight bracket has 3 holes to allow fixing using screws or bolts (not included).

A long steel support arm is available as an optional extra (product code FL11) and, if purchased, enables (optional) attachment of the floodlights to a surface so that the illumination pattern can be projected back (upwards or downwards) towards a surface such as a sign or billboard.

As this product has a wide variety of uses and can be used for many different applications, you may find it necessary to use other parts, that are not included, to aid installation for your particular situation. For example, you may wish to fix the floodlight or solar panel to a pole (we do not include a pole) and therefore you will need to provide the necessary adaption to enable fixing to a pole and the pole itself. Another example, you may wish to bolt the floodlight to the ground. You would then need a smooth level surface in place, such as concrete or a concrete slab. You will then need to fix the solar panel nearby and you may wish to make a bracket for the solar panel or some other device to enable its normal operation.

For less straight forward or unusual installations you may need to use your own fixings to accommodate the solar panel and/or the floodlight. Should provide illumination of an open area up to approx. 12 metres x 12 metres (40' x 40') and maybe beyond to the extent of a 200 watt light output.

Should be suitable for illuminating a sign up to approximately 4 metres x 3 metres (12' x 10') or maybe larger depending upon location of floodlight and/or sign to the extent of what a 200 watt light output can provide.

May be wall mounted, possibly fixed to a pole or post or possibly to the ground to a flat, firm surface.

For uplighting from the ground, for sign lighting or flag pole lighting, we recommend fixing to a small, short wooden post (not included).

Operates up to 12 hours, or more, during darkness, in ideal conditions. Typically about 4-5 hours of full, direct sunshine daily is required to enable full charge.

Floodlight dimensions (main floodlight body) approx. 28cm x 30cm x 10cm (11" x 12" x 4") LxWxD.

Solar cell panel dimensions approx. 79cm x 36cm x 2.5cm (31" x 14" x 1") LxWxD.

The solar panel support/mounting frame (as supplied), if used, requires a footprint of approx. 81cm x 38cm (32" x 15") LxW.

Wall bracket (supplied attached to the floodlight) is approx. 20cm x 2.5cm (8"x1") LxW and has 3 holes pre-drilled to allow fixing.

The solar panel support brackets are triangular in shape and have a face length of approx. 49cm (19"), a stand-off of approx. 26cm (10") and a fixing length of approx 43cm (17").

Each battery is approx. 33cm x 18cm x 18cm (13" x 7" x 7") LxWxD.

The metal battery box is approx. 42cm x 35cm x 13cm (17" x 14" x 5") LxWxD.

The battery box has a footprint for installation of approx. 36cm x 36cm (14" x 14") LxW.

The optional long floodlight support arm is available (at extra cost, see product code FL11) and is approx. 80cm (71") long and has a 4cm x 4cm (1.5" x 1.5") square profile.

The optional long support arm has a flat mounting plate (approx. 13cm x 4cm (5" x 1.5")) allowing direct attachment to the U shape bracket of the floodlight.

Two U shape clamps are supplied with the long support arm to enable attachment to a surface. Each clamp needs a mounting footprint of approx. 9cm x 4cm (3.5" x 1.5").

PLEASE NOTE: This system is a special order product and is non-returnable/non-refundable unless in the event of a warranty claim which, after verification, any defective part would be repaired or replaced only.

Time length of night time illumination is subject to various factors including seasons, weather & location of product etc.

Close window

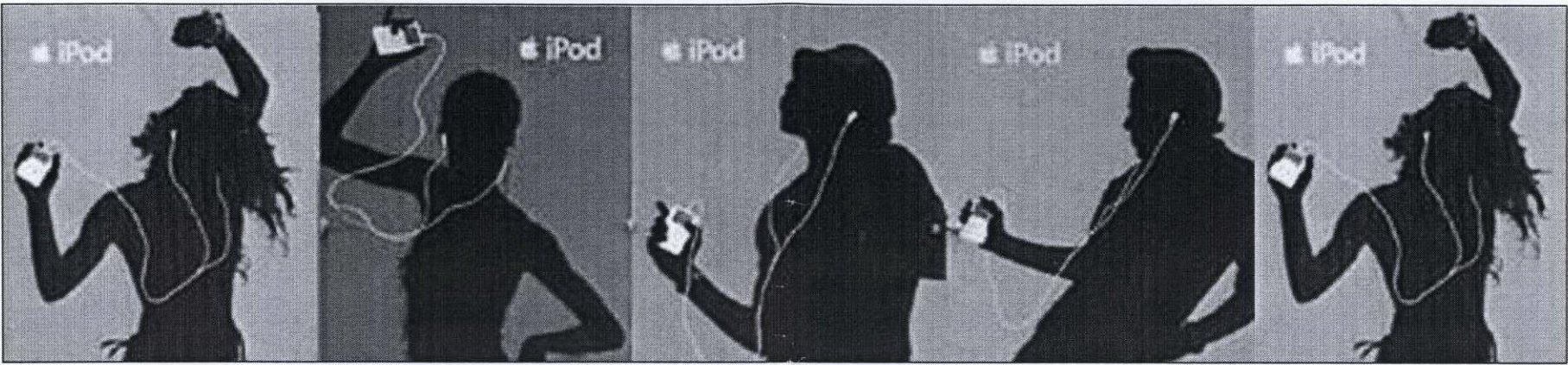
RECEIVED
- 1 APR 2009



12.2m

Rear of Billboard
Solar Collectors 790 x 360mm

3.1m



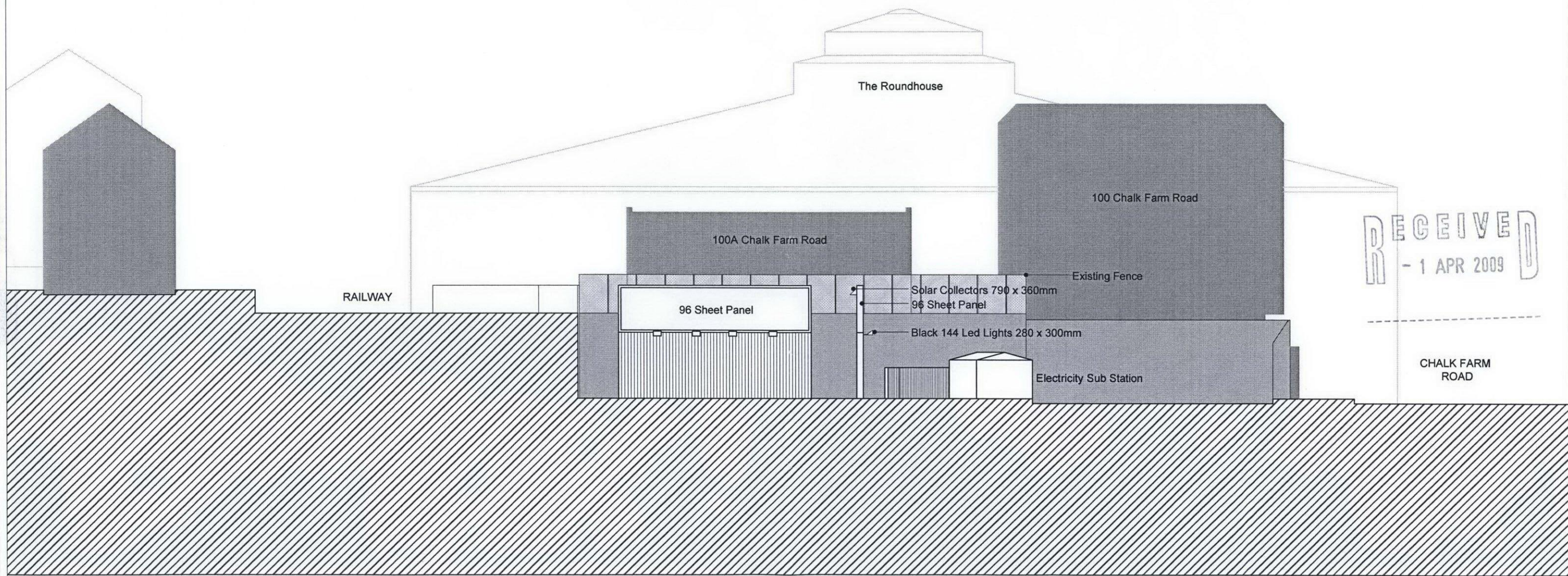
Black 144 Led Lights 280 x 300mm

Black Stained Timber Boarding

7.3m

RECEIVED
- 1 APR 2009

General Notes:	Rev-Date-Name-Revisions: /		Client	Anglo-Scottish Properties		Neil Choudhury Architects 11 Prospect Place, Hastings tel/fax 01424 425629		
			Job Title	Chalk Farm Road		Scale 1:50 @ A3	Date 17.02.09	Revision A
			Drawing	Billboard Detail		Drawing Number 366_503		Checked /



General Notes:	Rev-Date-Name-Revisions: /		Client Anglo-Scottish Properties	Neil Choudhury Architects 11 Prospect Place, Hastings tel/fax 01424 425629		
			Job Title Chalk Farm Road	Scale 1:250 @ A3	Date 17.02.09	Revision /
			Drawing North/South Section	Drawing Number 366_505		Checked /