

IF IN DOUBT ASK

1. GENERAL PRINCIPLES

PHASE 2 WORKS

REMAINING DELRAC CHILLER 2 ONLY TO BE REPLACED AS PART OF 2ND PHASE WORKS. SECOND PORTION OF ACOUSTIC ENCLOSURE TO BE ADDED TO COVER 2ND NEW MCQUAY CHILLERS.

GENERAL NOTES AND SPECIFICATION

1. ACOUSTIC DISCHARGE SKIRT:

ACOUSTIC DISCHARGE SKIRT FORMED FROM 50 ALUMINIUM MODULAR FRAME SYSTEM. FITTED TO TOP OF FAN DECK WITH PERIMETER PANELS 45mm THK CONSTRUCTED FROM PRE-GALV MILD STEEL WITH FIBROUS ACOUSTIC INFILL, TISSUE SCRIM AND PERFORATED SHEET STEEL INNER FACE WITH DRAIN HOLES AT BOTTOM.

INTERNAL SPLITTER PANELS 40mm THK. PERORATED SHEET STEEL TO BOTH FACES WITH FIBROUS ACOUSTIC INFILL AND TISSUE SCRIM, DRAIN HOLES TO BOTTOM. PANELS SIT WITHIN PRE-GALV MILD STEEL LOCATING CHANNELS FIXED TO INSIDE FACES OF PANELS.

2. INLET ATTENUATORS:

LOOSE SPLITTER ELEMENTS CONSTRUCTED FROM PRE-GALV SHEET STEEL WITH NOSE CONES TO BOTH ENDS.

3. WALL PANELS:

75mm THICK LATCH TOGETHER TYPE, CONSTRUCTED FROM PRE-GALV MILD STEEL SHEET WITH FIBROUS ACOUSTIC INFILL, TISSUE SCRIM AND PERFORATED SHEET STEEL INNER FACE.

c/w 2 OFF PERSONNEL DOORS, 1 OFF DOUBLE DOOR ACCESS TO CONTROL PANEL AND 3 OFF PENETRATIONS FOR PIPEWORK.

4. SUPPORT STEELWORK:

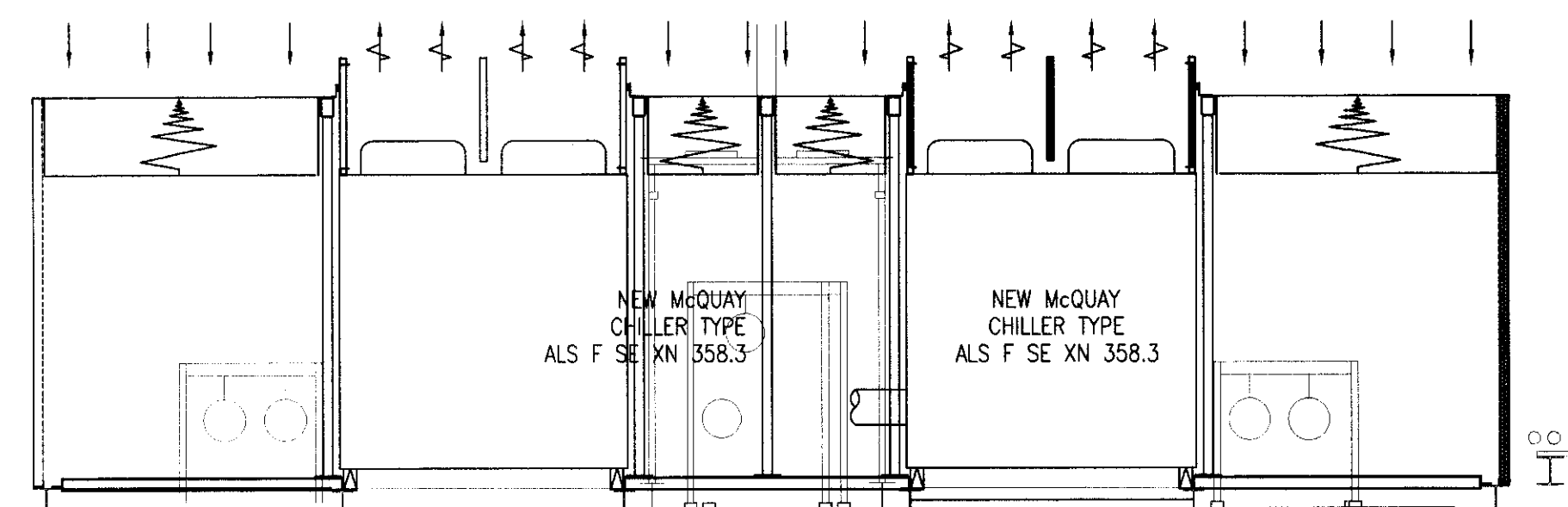
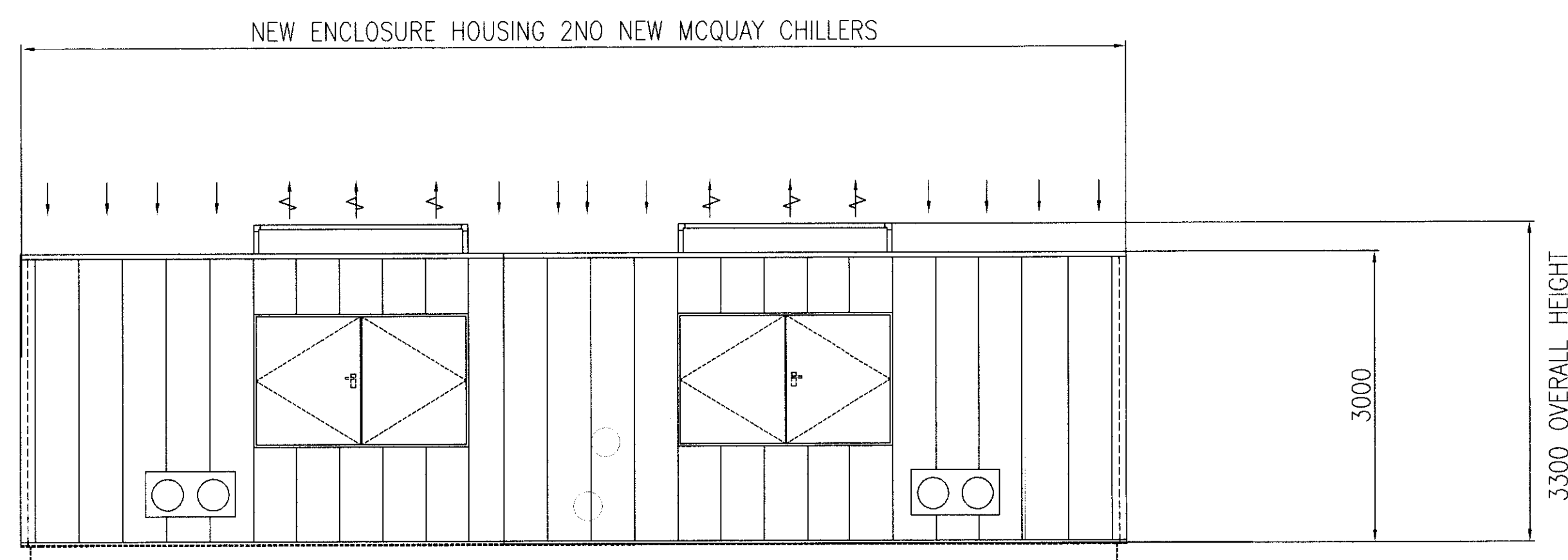
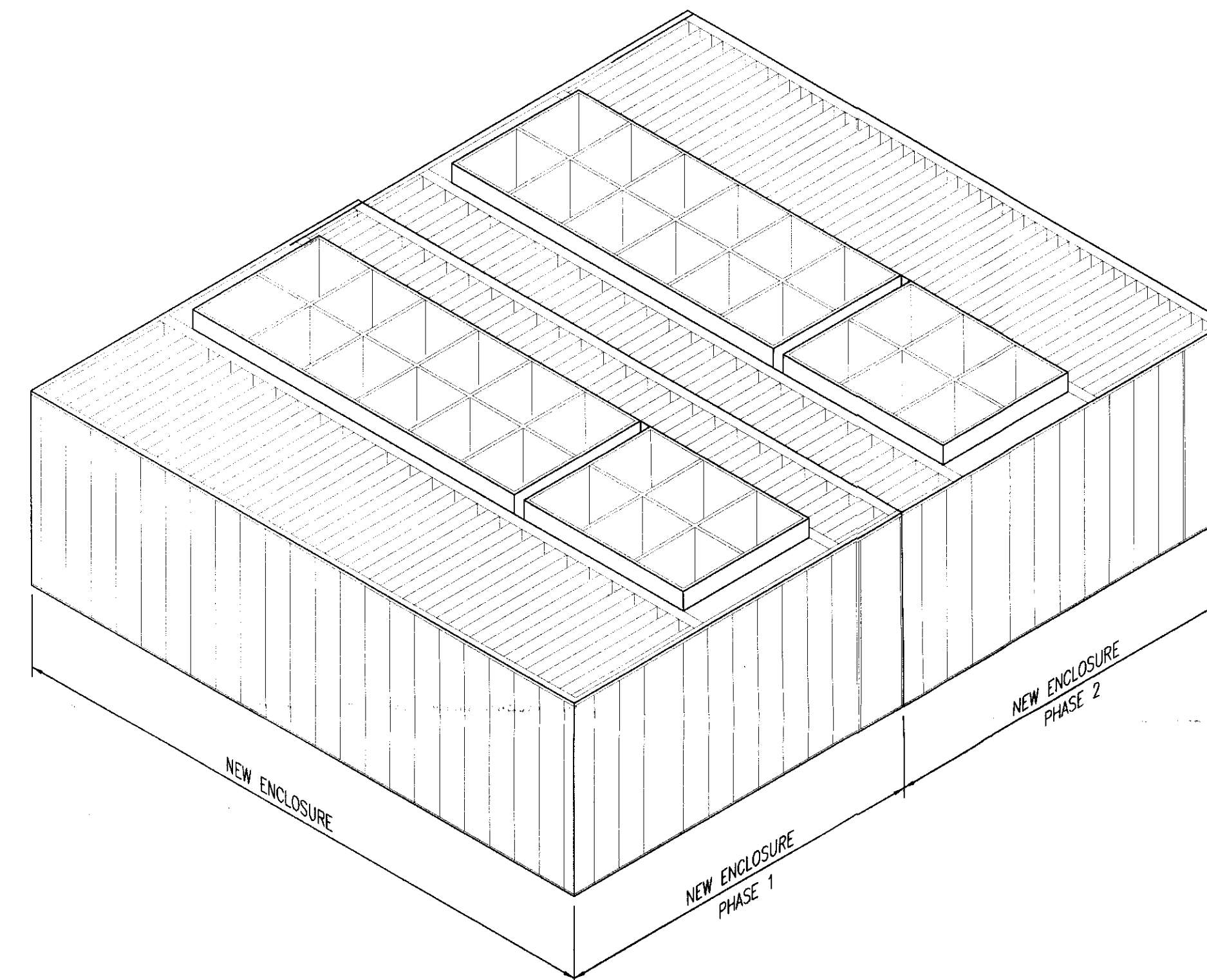
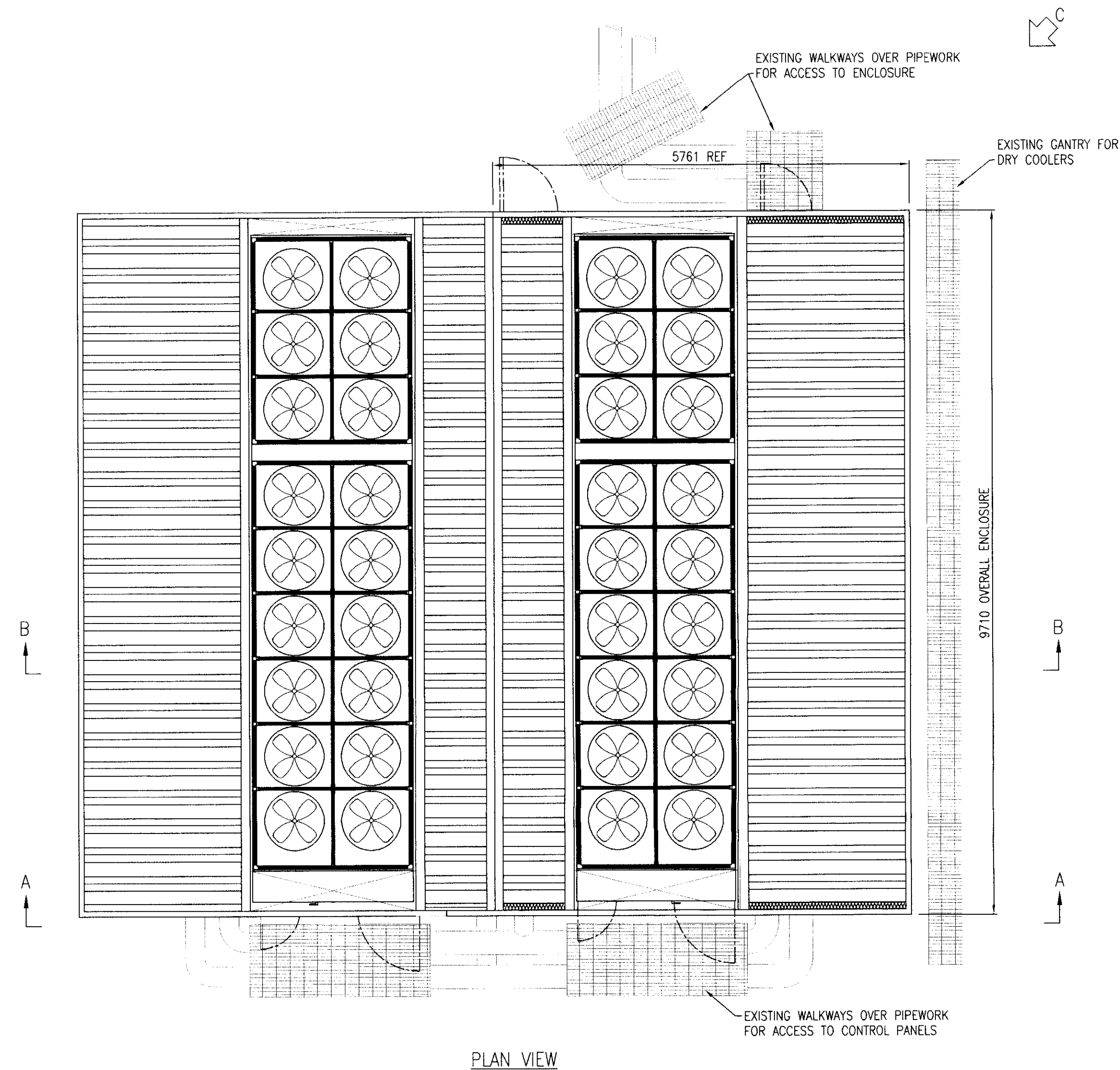
SPLITTERS SHALL BE SUPPORTED OFF A PURPOSE BUILT STEELWORK SUB-FRAME CONSISTING OF VERTICAL POSTS AND HORIZONTAL RAILS, SITE DRILLED TO EXISTING STEELWORK.

5. FINISH:


ALL SIGNIFICANT EXTERNAL VISIBLE FACES TO BE POLYSTER POWDER COATED RAL 7035 OYSTER GREY MATT.

MATCHING COLOUR CAPS TO ALL EXPOSED TEK SCREWS. MODULAR FRAME TO BE SELF FINISH ANODISED ALUMINIUM.

STEELWORK - HOT DIPPED GALVANISED AFTER MANUFACTURE.



PROPOSED

Work	Date	Details	By
REVISIONS			
Client:			
ST GEORGES COURT 2 - 12 BLOOMSBURY WAY LONDON, WC1A 2SH Group Property Services CAPITAL PROJECTS			
Project Title:			Rev:
CHILLER REPLACEMENT PHASE 2			
Scales: 1:50@A1		Original Drawing Size:	
Drawn By: WB	Checked By: DO	Passed By: DB	Date: MAR '09
Drawing Status:			
PROPOSED			
Originator:			
 Interserve <i>Technical Services</i>			
Unit 5 Liddell Way West Drayton UEST BPS Telephone: 01895 445 445 Facsimile: 01895 445 696			
Drawing Title:			
ENCLOSURE ARRANGMENT - PHASE 2			
Job No:	Drawing No:		Revision:
539944	SGC/539944/8		
Do NOT scale this drawing. Refer to Architects for details of current			