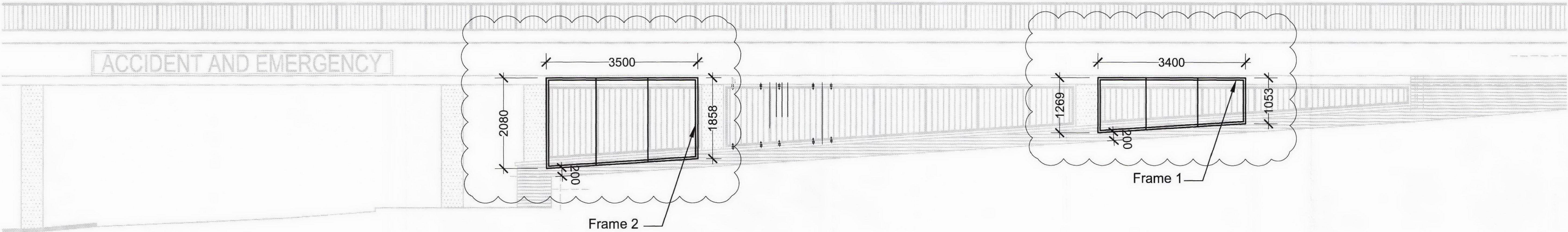
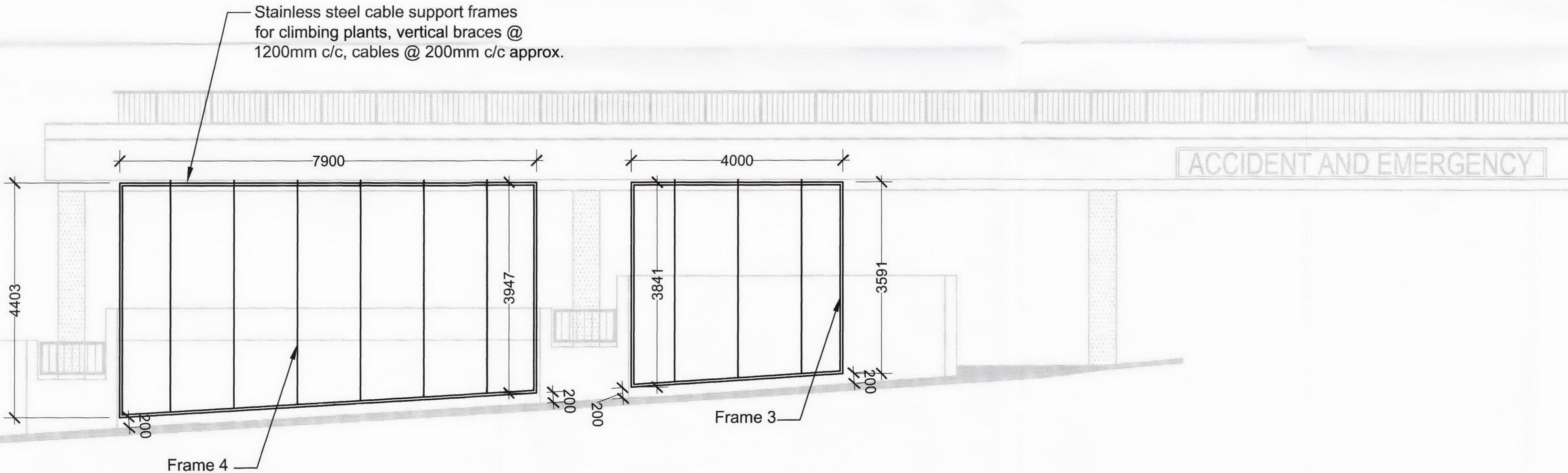


Rev	Date	Description
A	13.02.2009	For Construction
B	01.04.2009	Frames to Pond St elevation revised in accordance with adjusted column position and levels. The Frame to the planter around the Pisces sculpture is omitted from the scheme. Plan, section and elevation removed accordingly.



All frames fixed to face of brickwork at low level & u/s of concrete soffit at high level.



Royal Free Hospital Entrance Remodelling	General Arrangement of Plant Climber Cable Frames
--	---



1:100 @ A3	04 2008	07018	(02)013	B
SCALE:	DATE	JOB NUMBER	DRAWING NUMBER	REV

Tel 020 7387 0141
CHARTERED ARCHITECTS

Fax 020 7387 7460
24-32 STEPHENSON WAY LONDON NW1 2HD

architects@ansellandbailey.com