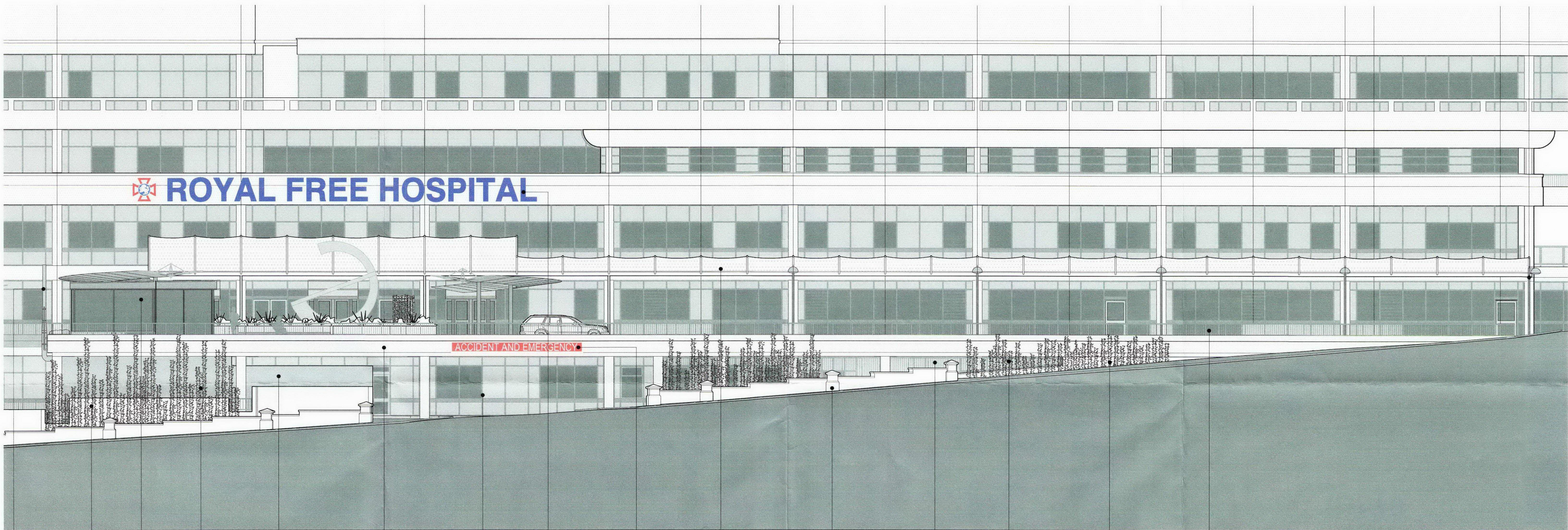


| Rev | Date | Description |
|-----|------------|---|
| A | 15-07-2007 | Works areas highlighted. |
| B | 23-01-2008 | Upper Ground level facade revised in accordance with new reception layout. Canopy and signage moved also moved accordingly. Works areas highlighting removed. |
| C | 28-04-2008 | New Facade infill to colonnade and new entrance doors removed. Grid Lines reversed and revised to comply with latest structural layout. Canopy and signage moved. |
| D | 14-10-2008 | Colonnade infilled with entrances to Volunteers & Fundraising offices. Canopy extended to cover length of drop off area. Automated revolving and pass doors added to main entrance. Public space created outside main entrance to incorporate Cafe raised planters and external seating area. Curved canopies added to cover route from external staircase and Public Transport loading area. Climbing plants on stainless steel cable trellis to screen existing lower ground floor parking and plant room. Illuminated fascia mounted signage moved to be centred over main entrance. Accident & Emergency sign replaced. |
| E | 04-03-2009 | Elevation updated to reflect development of cafe design. |



- T

Aluminium Framed Glazed Cafe Enclosure to Match Main Facade. Resin roof and powder coated aluminium fascia with Canopy Over.
- S

Planted Sreening Climbers on Stainless Steel Cables
- R

Fair Faced Concrete Upper Deck
- P

Ambulance Entrance
- N

New Entrance Canopy incorporating Lighting
- M

Brown Brick Wall
- L

New Railing to Match Existing.
- K

Planted Sreening Climbers on Stainless Steel Cables
- J

New Brown Brick Wall
- H

New Metal Railing to Match Existing
- G
- F
- E
- D
- C

Dec
- T

ement
less
I Flue
- S

Secondary
Brown
Brick Wall
- R

Planted
Sreening
Climbers on
Stainless
Steel Cables
- P

Existing
AHU
- N

Fair Faced
Concrete Upper
Deck
- M

New Fascia
Mounted
Signage.
- L

Replacement
A&E
Signage.
- K

New Entrance
Canopy
incorporating
Lighting
- J

Brown Brick
Wall
- H

New Railing to
Match Existing.
- G

Planted
Sreening
Climbers on
Stainless
Steel Cables
- F

New Brown
Brick Wall
- E

New Metal
Railing to Match
Existing
- D
- C

Dec

NEW DECK AREA (TREES OMITTED FOR CLARITY)

| | |
|---|-------------------|
| Royal Free Hospital Entrance Remodelling | Proposed New Deck |
|---|-------------------|