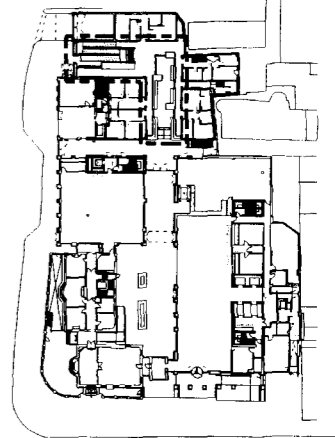


NOTES  
 DO NOT SCALE FROM THIS DRAWING.  
 DIMENSIONS TO BE CHECKED ON SITE.  
 ALL OMISSIONS AND DISCREPANCIES TO BE REPORTED TO THE ARCHITECT IMMEDIATELY.  
 DRAWINGS BASED ON SURVEY INFORMATION BY MICHAEL GALLIE AND PARTNERS.



**GENERAL NOTE**  
 REFER TO LANDSCAPE CONSULTANT DRAWINGS FOR PLANTING PLAN

**LIGHTING KEY**

- ⊙ (TYPE: ER2) INGROUND LUMINAIRE -BEGA 8805
- ⊙ (TYPE: ER5) PORTABLE FLOOD LIGHTS -BEGA 7925

Lifetime Homes notes added	02/04/09	DB	C
Condition 5 and 6	18/03/09	MPo	B
ISSUED FOR EXTERNAL WORKS	11/12/08	DB	A
	Date	Check	Rev

**SQUIRE AND PARTNERS**

77 Wicklow Street London WC1K 9TY  
 Tel 020 7278 5555 Fax 020 7239 0495  
 email@squireandpartners.com  
 www.squireandpartners.com

Project  
**UNISON HQ**  
 Euston Road, North Site  
 London NW1

Drawing  
**EXTERNAL WORKS**  
**RESI. PEDESTRIAN APPROACH & PODIUM**

Drawn	Date	Scale
KN/NT	DEC 2008	1:50
Job number	Drawing number	Revision
05070	90-01_110	B

Original Drawing Size A1

FOR CONTINUATION SEE 90-01 103

FOR CONTINUATION SEE 90-01 111