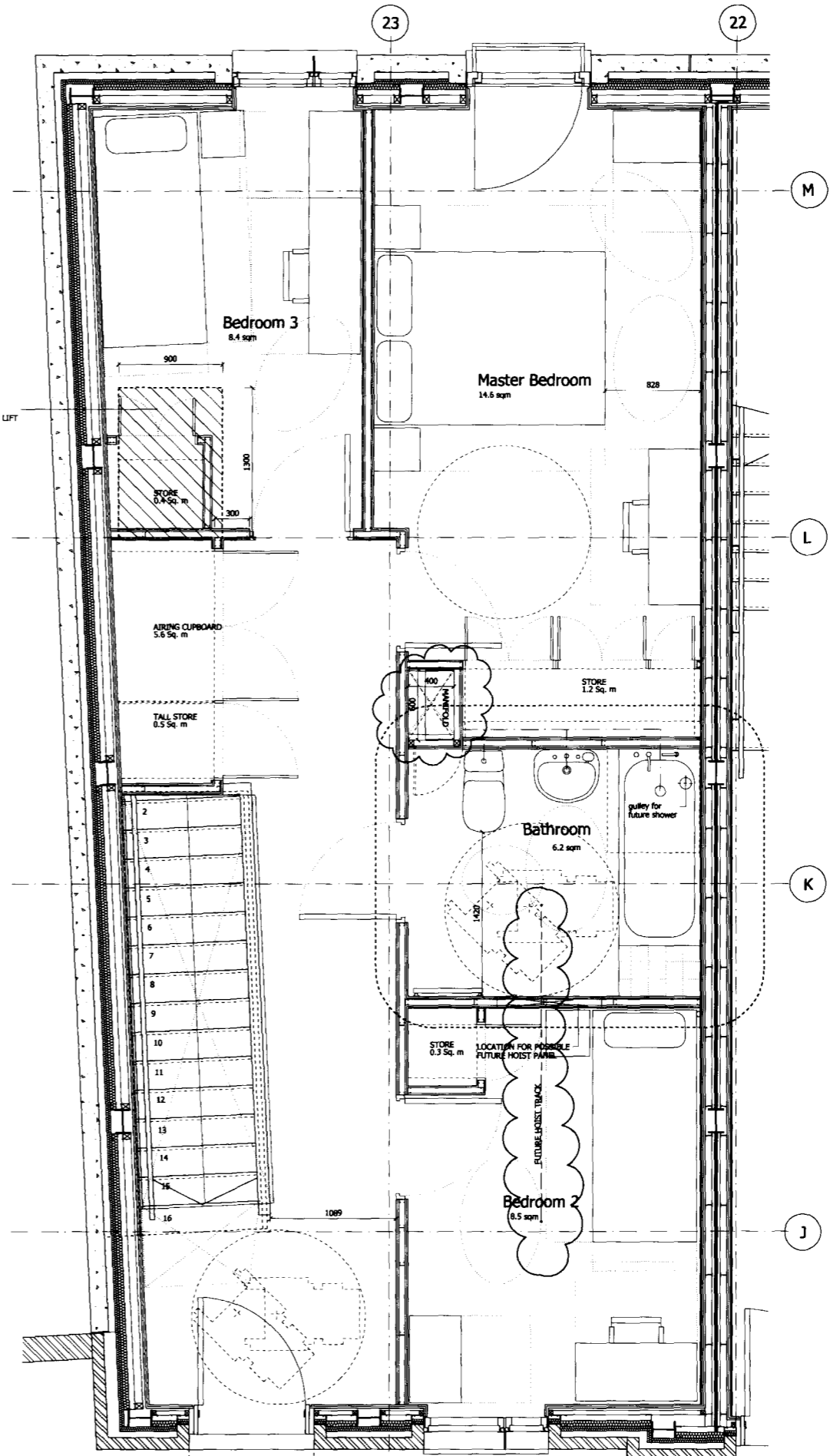


01 Basement Floor Plan
05070_IW_Plan_BHDE_BAS_01.dgn

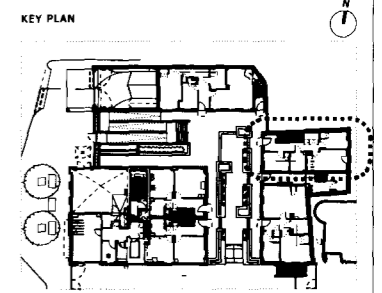
4 Bedroom Apartment/5 Persons
NIA - 104m²

General Normal Storage including Airing Cupboard	10.3 m ²	(HQ1v4 min 3.75m ²)
Tall Storage	0.5 m ²	(HQ1v4 min 0.5m ²)
Kitchen Units Volume	3.28 m ³	(HQ1v4 min 2.2m ³)



02 Ground Floor Plan
05070_IW_Plan_BHDE-GF_01.dgn

NOTES
DO NOT SCALE FROM THIS DRAWING.
DIMENSIONS TO BE CHECKED ON SITE.
ALL OMISSIONS AND DISCREPANCIES TO BE REPORTED TO THE ARCHITECT IMMEDIATELY.



Issued for Lifetime Homes	02/04/09	DB	J
Issued for Information	31/03/09	DB	H
Revised Layouts and Bathrooms	12/02/09	DB	G
Fitted cupboards added, risers revised	30/01/09	DB	F
Issued for Tender	16/01/09	DB	E
Issued for Information	16/12/08	DB	D
Issued for Information	06/11/08	DB	C
Issued for Information	24/07/07	MPO	B
Issued for Stage D	13/07/07	MPO	A
Date	Check	Rev	

SQUIRE AND PARTNERS

77 Wicklow Street London WC1X 9JY
Tel: 020 7278 5555 Fax: 020 7239 0495
email@squireandpartners.com
www.squireandpartners.com

Project
UNISON HQ
Euston Road, North Site
London NW1

Drawing
Proposed Residential: Affordable Layout
Block E, Type 1 Duplex Unit
EG.2 Affordable Rented

Drawn	Date	Scale
DL	July 2007	1:25 @ A1 1:50 @ A3
Job number	Drawing number	Revision
05070	22-01_106	J

Original Drawing Size A1