



Centre Point  
Stair Core Refurbishment  
**Proposed Lighting to the Mezzanine to 2nd Floors**

4475

Internal Refit of Level 29  
Listed Building Application

**Design and Access Statement &  
Additional Illustrative Material**

April 2009

---

**ROLFE JUDD**

Ref: K:4475/DOC/4475-DOC-070814-A4 Listed building application(level 26).indd

[www.rolfe-judd.co.uk](http://www.rolfe-judd.co.uk)

Old Church Court  
Claylands Road  
The Oval  
London SW8 1NZ  
T: 020 7556 1500  
F: 020 7556 1501  
E: [info@rolfe-judd.co.uk](mailto:info@rolfe-judd.co.uk)  
W: [www.rolfe-judd.co.uk](http://www.rolfe-judd.co.uk)

**Typical Floor Plan**

**Design**

Consent has been granted to refurbish the north and south cores (planning reference 2007/0762/L and 2008/3729/L). A key component of these works is to replace the outdated electrical cabling and lighting throughout the building. Existing floor to ceiling heights at approximately 2m are considerably lower on the mezzanine to 2nd floor stair core areas. In addition current light levels of approximately 40 lux per floor are insufficient, therefore an alternative proposals must be considered.

Proposal is to create a slimline perimeter bulkhead to conceal cabling and house a new linear fitting - creating more light at approximately 159 lux per floor. This is in accordance with the CIBSE lighting guide recommendations, and is in keeping with the architectural and historical character of the building.

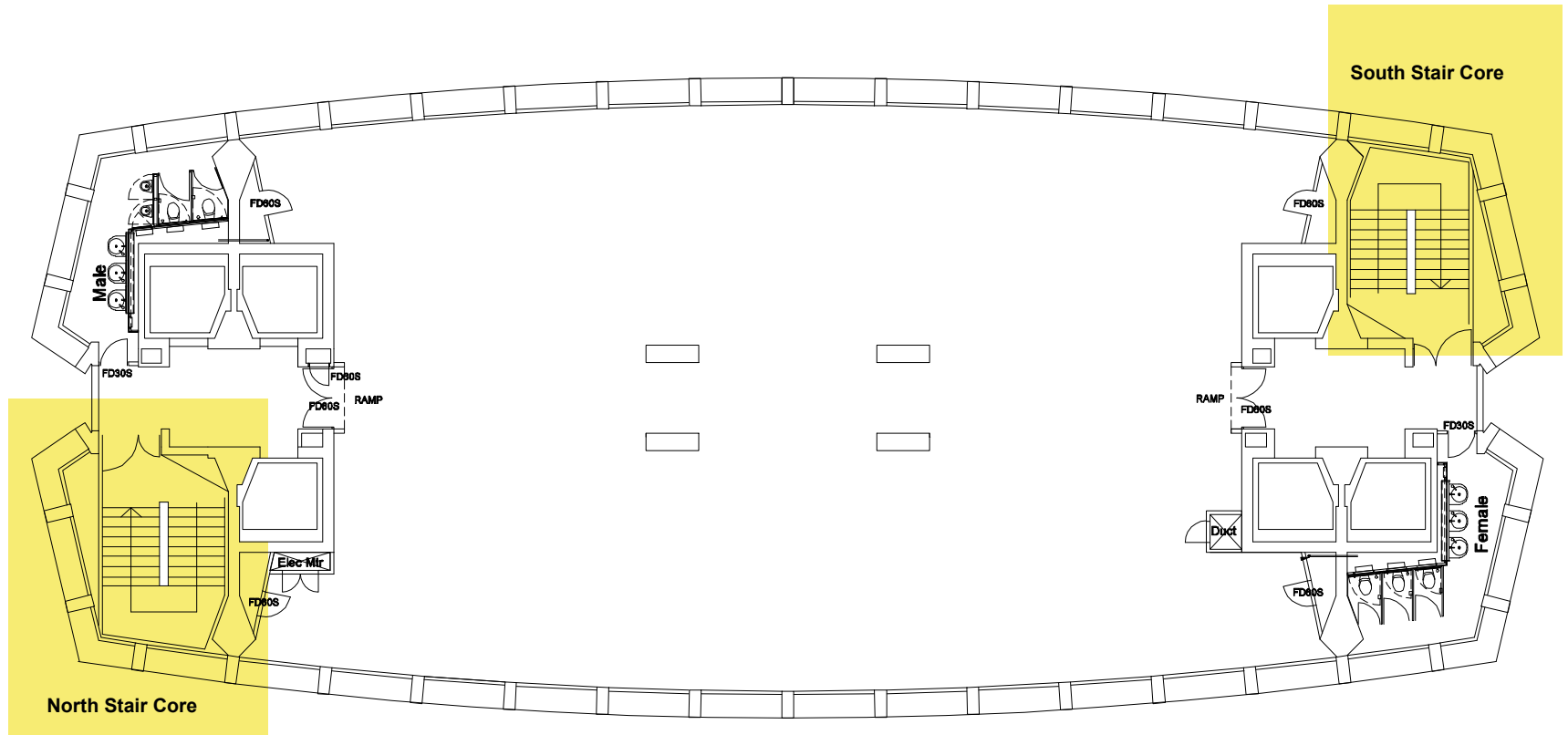
**Access**

No change, as existing.

Scale: 1:200 @ A4

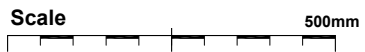
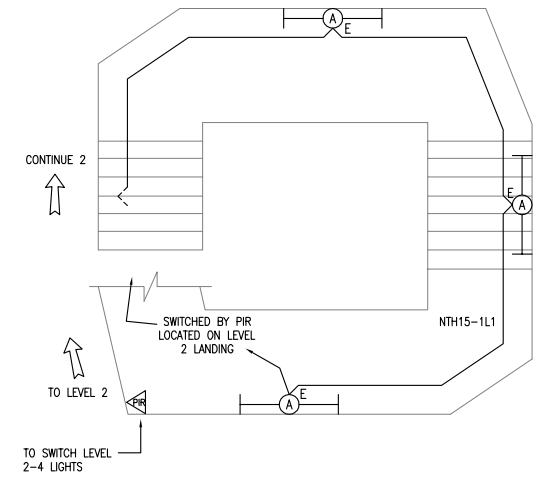
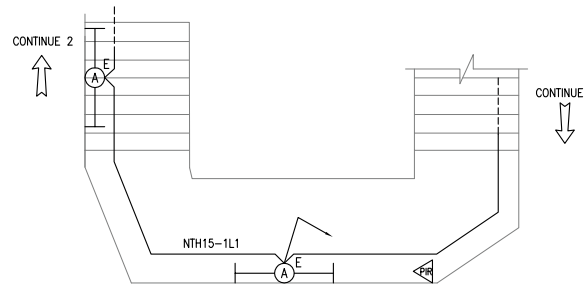
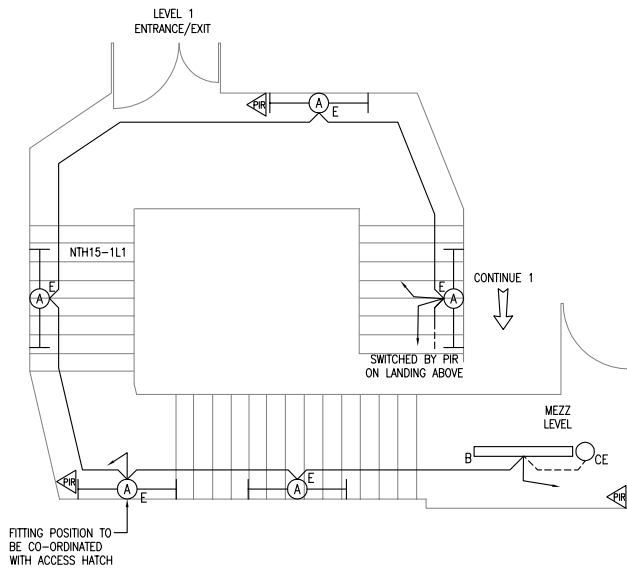
**Key:**

Stair core area


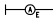




This scale is 100mm in length when printed at the size indicated in the title block.

Typical North Stair Core Diagrammatic Plans

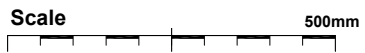
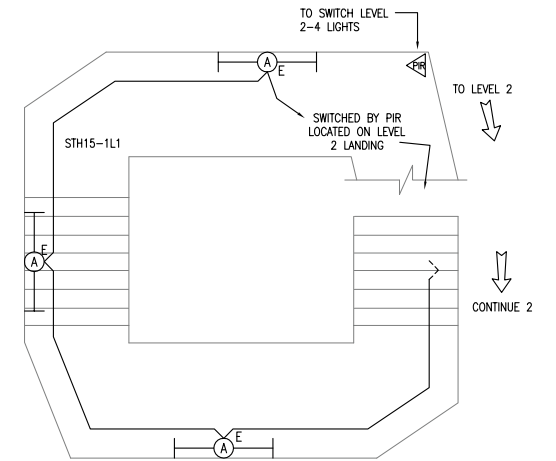
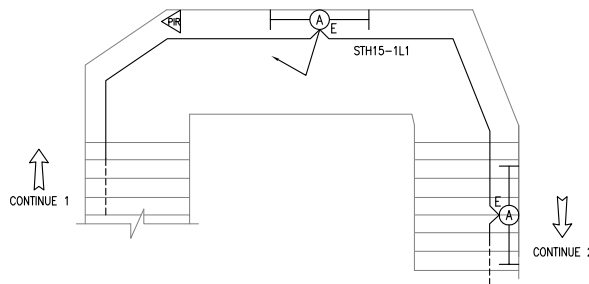
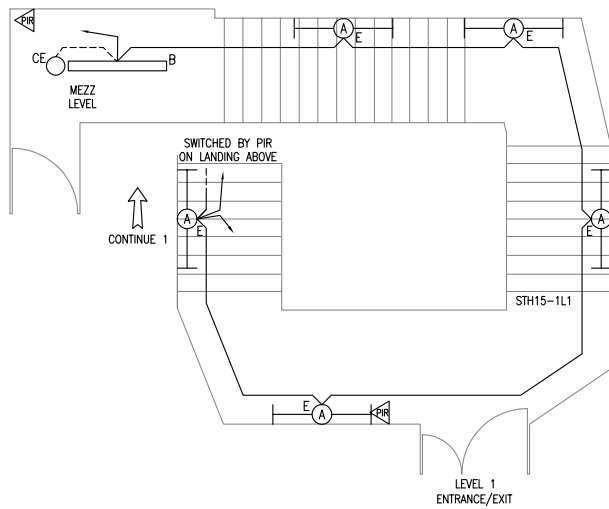


LEGEND:


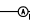


-  PIR motion sensor recessed in perimeter bulkhead
-  Trilux luminaire with prismatic Plexiglas diffuser recessed in perimeter bulkhead
-  Trilux surface mounted luminaire with prismatic Plexiglas diffuser
-  Emergency luminaire

**ROLFE JUDD**

Typical South Stair Core Diagrammatic Plans

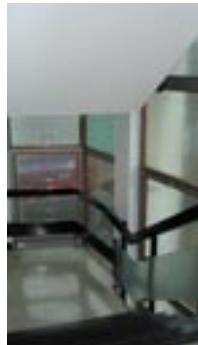
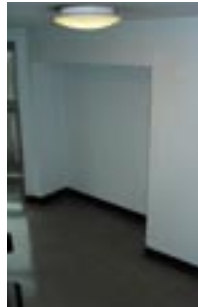


LEGEND:

-  PIR motion sensor recessed in perimeter bulkhead
-  Trilux luminaire with prismatic Plexiglas diffuser recessed in perimeter bulkhead
-  Trilux surface mounted luminaire with prismatic Plexiglas diffuser
-  Emergency luminaire

ROLFE JUDD

Existing Conditions



- ◆ Insufficient light levels
- ◆ Low floor to ceiling levels



## Product information 3451N/58 E TOC: 11 177 04

Surface-mounted luminaires with prismatic PLEXIGLAS diffuser

### Application

Offices, sales areas, showrooms, lounges and corridors.

### Optical system

Opal PLEXIGLAS diffuser, made in one piece, with solid corners. Safe retention of the diffuser by means of plastic lever locks.

### Luminaire body

Powder-coated sheet steel, white. .../36, .../58 suited for internal heat-resistant through-wiring with luminaire coupling.

### Production sites subject to fire hazards

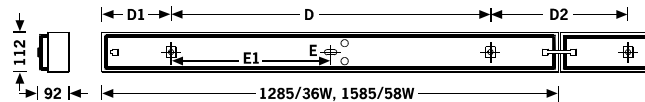
Due to limited surface temperatures and high IP rating, the versions ...E are suitable for production sites subject to fire hazards.

### Control gear option

With electronic control gear (E).

### Specification text

Surface-mounted luminaire with opal diffuser, for 1 fluorescent lamp 36W. Luminaire body in sheet steel, white. Degree of protection IP50. With electronic control gear (E).

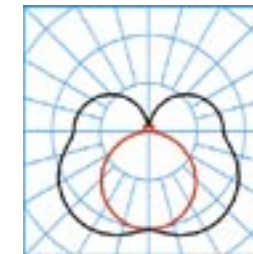


D (mm): 1200  
D1 (mm): 193  
D2 (mm): 390  
E1 (mm): 600

### available accessories

TOC:	article
12 381 00	676/1 emergency light lampholder
11 168 00	3450 luminaire coupling
11 170 00	3450/3LV/58 through wiring set
11 172 00	3450/5LV/58 through wiring set
21 890 00	07690/5LV/25 07910/5LV/25 Thr Wiring 25m
28 437 00	Diffuser 3451N/58 spare
29 268 00	078 Rod Suspension c/w 900mm Tube

## Proposed Light Specification



file TX5067  
UGR I = 16.7  
UGR q = 23.7  
LFEC = F5

— c0-c180  
— c90-c270



Degree of protection	<b>IP 50</b>
Safety class	<b>I</b>
Hot wire test	<b>650 ° C</b>
Shock resistance	<b>0,2 J</b>
LFEC	<b>F5</b>
Cibse	<b>BZ 6</b>
LOR	<b>0,74</b>

**Lighting Solution**



**Existing**

Refurbishment works as approved by extant listed building consents 2007/0762/L and 2008/3729/L to be implemented shortly.

**Proposed**



**Lighting Solution**

**Proposed**

Proposed slimline perimeter bulkhead to conceal cabling and house new linear recessed light fitting.



**ROLFE JUDD**