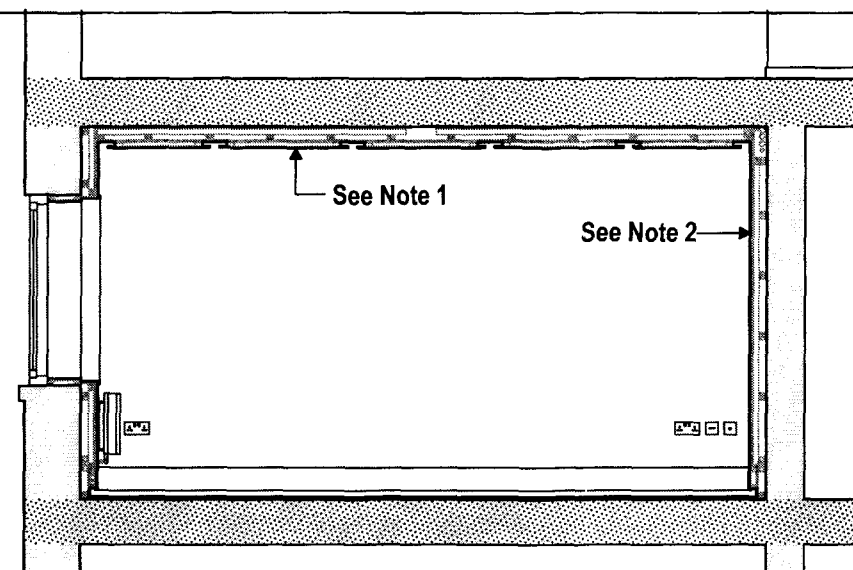


NOTE 1

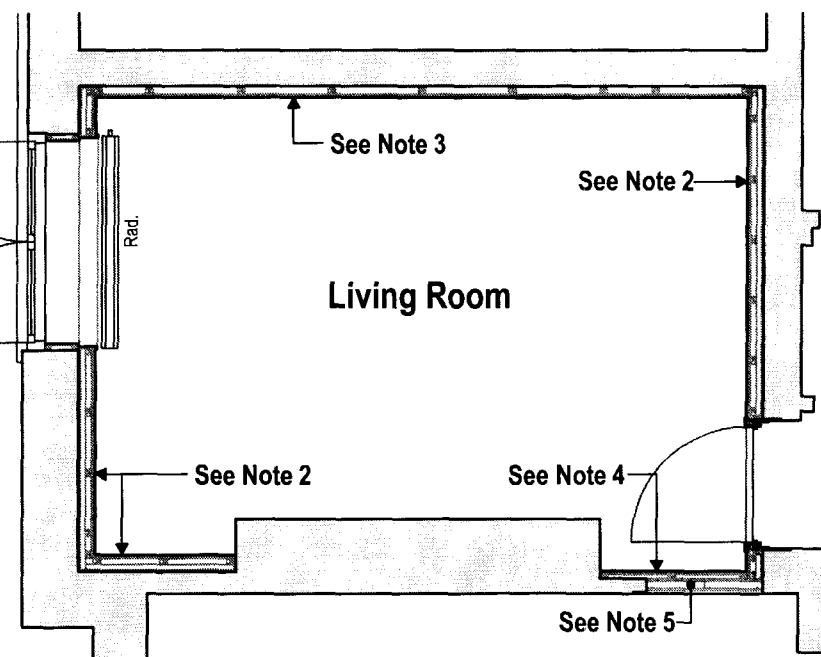
12.5 mm Veneered Plywood, on
25x50mm timber frame, screwed to
12.5 mm Plywood sheathing, on
500 gauge Polythene vapour barrier, on
47x38mm treated timber battens, on
47x38mm treated timber counter battens, on
12.5 mm Plywood spacers.
Counter battens anchored to ceiling, through spacer with Fischer
Nylon frame Fixings at 400mm c/c
Thermal insulation placed between battens &
counter battens.

NOTE 2

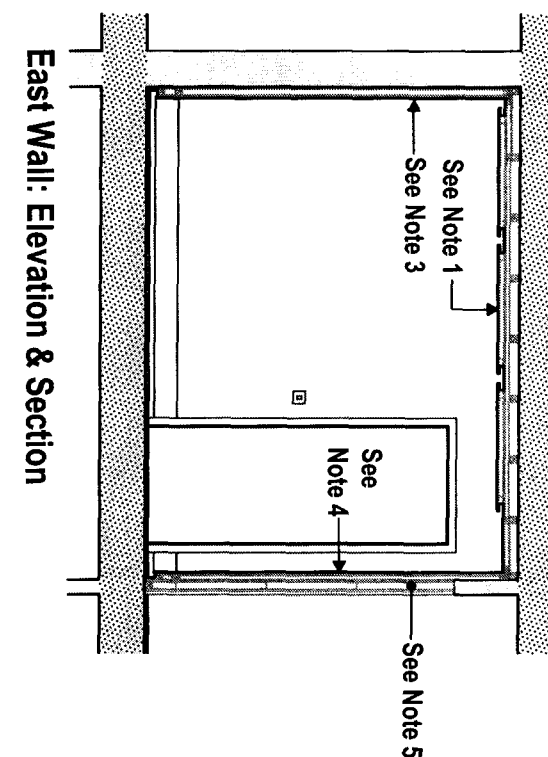
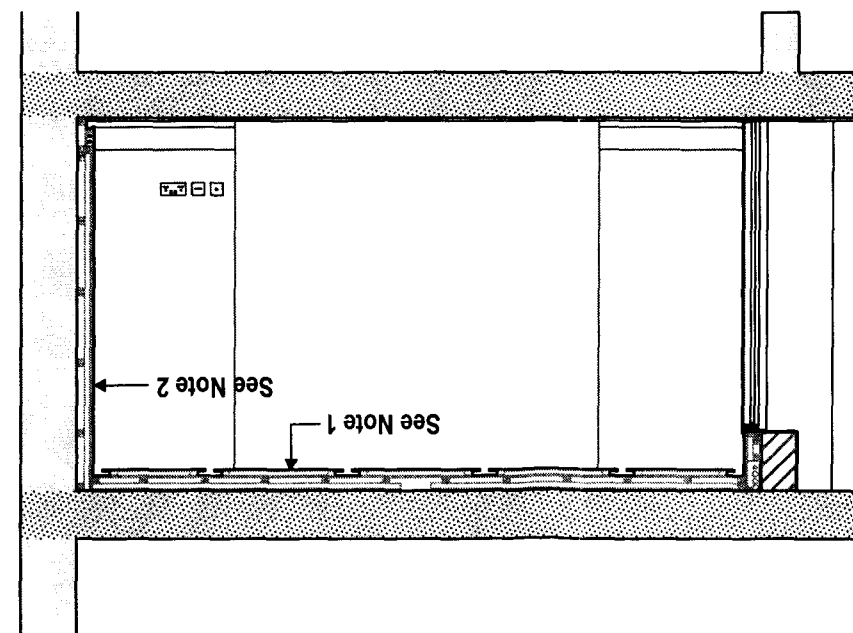
Plaster skim finish, on
12.5 mm Plaster Board, on
12.5 mm Plywood sheathing, on
500 gauge Polythene vapour barrier, on
47x38mm treated timber battens, on
47x38mm treated timber counter battens, on
12.5 mm Plywood spacers.
Counter battens anchored to wall, through spacer with Fischer Nylon
frame fixings at 400mm c/c
Thermal insulation placed between battens &
counter battens.



North Wall: Elevation & Section

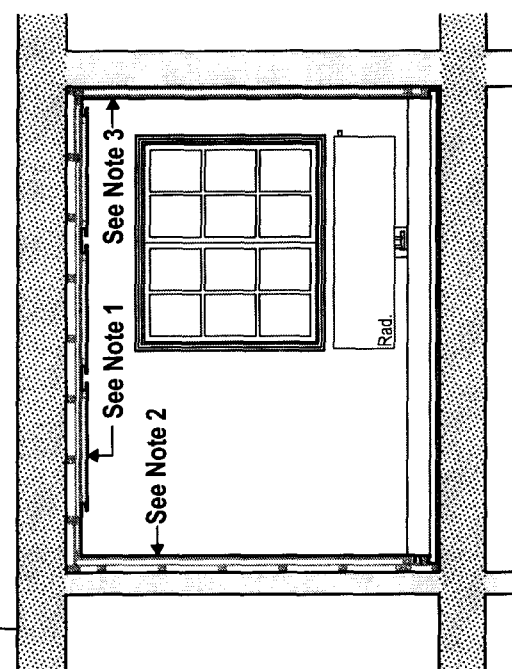


South Wall: Elevation & Section



East Wall: Elevation & Section

West Wall: Elevation & Section



NOTE 3

Plaster skim finish, on
12.5 mm Plaster Board, on
12.5 mm Plywood sheathing, on
500 gauge Polythene vapour barrier, on
47x38mm treated timber battens, on
12.5 mm Plywood spacers.
Battens anchored to wall, through spacer with Fischer Nylon
frame fixings at 400mm c/c
Acoustic nsulation placed between battens.

NOTE 4

Plaster skim finish, on
12.5 mm Plaster Board, on
12.5 mm Plywood sheathing, on
22x47 Treated timber battens

NOTE 5

1 layer of 15mm fire line board each side of
48mm gypframe metal "C" stud to give 1-hour fire
resistance. Acoustic quilt to be secured
between fire line boards.
Plaster finisn to bedroom side of wall

RECEIVED 23 APR 2000

| Date | Description of Revision | Revision |
|------|-------------------------|----------|
|------|-------------------------|----------|

Project Title
Alterations to:
29 Buckridge Building
Portpoll Lane
London EC1N 7UP

Drawing Title
Living Room
Floor Plan & Elevations

| | |
|----------|-------|
| Date | Scale |
| April 09 | 1:50 |



| | |
|------------|--|
| Drawing No | |
| 019 | |