


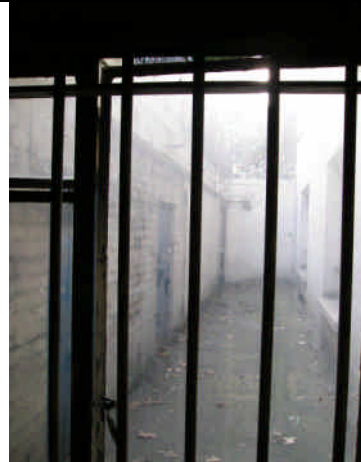


UCL TORRINGTON PLACE DEVELOPMENT PHASE 5. SHEDULE OF WORKS BASEMENT FLOOR

Room	Walls	Floor	Ceiling	Door/Ironmongery	Window	Fixtures/Fittings	Notes
B57& B58 Exist.	Masonry walls.	Concrete floor Concrete finish	Concrete (Under Foot-path)	Flush Fire door. Gloss paint finishes Ironmongery- old satin SS door handle of no historic value. Door closers	Crittall Windows and Metal Burglary proofing	Skirting – None	Redundant electrical services and discontinued metal trunking remain on walls.
B57& B58 Prop.	Strip M&E services Repair cracks and stop in holes. Make good walls, Render walls as spec M20 Decorate as spec M60 .	Damp treatment if required. Damp proof Paint as spec M50 .	Strip M&E Services Skim finish M20 Prepare and decorate as spec M60 .	Retain doorframe, lining architrave. Provide new 4- panelled door spec L20 complete with Ironmongery P21 .	Prepare and redecorate cills Decorate existing Crittall windows and secondary glazing as spec M60		Strip out plant and mechanical services. Strip out electrical services and install new M&E Services. Refer to M&E spec.

ROOM B57 & 58 IMAGES

				
Fig. B57/58.1– View 1	Fig. B57/58.1– View 2	Fig. B57/58.1– View 3	Fig. B57/58.1– View 4	

UCL TORRINGTON PLACE DEVELOPMENT PHASE 5. SHEDULE OF WORKS BASEMENT FLOOR

UCL TORRINGTON PLACE DEVELOPMENT PHASE 5. SHEDULE OF WORKS

GROUND FLOOR

Ground Floor - Survey of building carried out on 27 February 2009. To be read in conjunction with **WMP 4921- L (01) 03**

Room	Walls	Floor	Ceiling	Door/Ironmongery	Window	Fixtures/Fittings	Notes
G1 Exist.	Masonry/Lath & Plaster emulsion paint on Walls paper. W1 - large service trunking at high-level length of room. Heating pipes at low level.	Timber floor Carpet finish	Lath & plaster. Poor finish. Appear crumbling. Wall papered and painted in white emulsion. Decorative plaster coving	Old 4 panelled fire door Upper Georgian wire - glazed panes (longer). Several coats Gloss paint finishes. Ironmongery- old satin SS door handle of no historic importance.	Sash window. Georgian glazing bars. Architrave Timber window cills in poor condition.	Skirting – 230mm High Ogee painted in white gloss. 100mm pencil round on W4 white. Stone Fireplace boarded up and air vent above. Wall shelving.	Redundant power sockets and discontinued metal trunking remain on walls. Floor Standing Cast Iron Radiator. Stone Fire place.
G1 Prop.	Strip out M&E services. Strip walls of wallpaper. Repair cracks and Make good walls, Skim M20 Decorate as spec M60 .	Remove exist. Carpet, Rid the floor of glue, staples etc Prepare floor and install new carpet flooring as spec M50 .	Strip ceiling of wallpaper. Allow for the installation of new services. Skim finish M20 Prepare and decorate as spec M60 .	Retain doorframe, lining architrave. Provide new matching 4-panelled fire door spec L20 complete with Ironmongery P21 .	. And decorate existing window and cill as spec M60 .	Remove shelving and noggin. Repair cracks and Make good walls. Retain Ogee skirting on W1 , W2 & W3 . Replace skirting on W4 with matching Ogee skirting. Decorate as spec. M60	Allow for dado trunking. Provide new steel radiator at new location away from the window. Refer to M&E spec.

Room G1 - Images



UCL TORRINGTON PLACE DEVELOPMENT PHASE 5. SHEDULE OF WORKS GROUND FLOOR

Room	Walls	Floor	Ceiling	Door/Ironmongery	Window	Fixtures/Fittings	Notes
G2 Exist.	Masonry / Lath & plaster. White emulsion paint on Walls paper.	Timber floor Carpet finish	Lath & plaster. White emulsion.	Glazed flush fire door Georgian wire. Gloss paint finishes several coats. Ironmongery- old satin SS door handle of no historic importance. Door closer	Casement window secondary glazing on W3 . Crittall window	W1 - IT cupboard, Air con Pipe works at low level. Skirting – 100mm High painted pencil round skirting in white gloss. W4 - Air vent at high level.	Plastic trunking on top of skirting. Floor Standing Cast Iron Radiator. Stone Fire place on W4 boarded over.
G2 Prop.	Strip walls of wallpaper and M&E services. Repair cracks and stop in holes. Make good walls, Skim walls Decorate as spec M60 .	Remove exist. Carpet, Rid the floor of glue, staples etc Prepare floor and install new carpet flooring as spec M50 .	Skim finish M20 Install new M&E services. Prepare and decorate as spec M60 .	Retain doorframe, lining architrave. Supply and fit new 4-panelled fire doors to spec L20 complete with Ironmongery as spec. P21 . Refer to door/Ironmongery schedule	Prepare and redecorate existing cills Decorate existing Crittall windows as spec M60 .	Retain A/C and IT cabinet and re-route cabling. New M&E Services (Refer to M&E spec) Strip out existing skirting and install Ogee skirting and decorate as spec M60 .	Install new steel radiator. Refer to M&E spec. Allow for dado trunking.

Room G2 - Images



Fig. G2.1 – View of Wall 1

Fig. G2.2 – View of Wall 1/2

Fig. G2.3 – View of Wall 2/3

Fig. G2.4 – View of Wall 3

Fig. G2.5 – View of Wall 4

UCL TORRINGTON PLACE DEVELOPMENT PHASE 5. SHEDULE OF WORKS GROUND FLOOR

Room	Walls	Floor	Ceiling	Door/Ironmongery	Window	Fixtures/Fittings	Notes
G3 Exist.	Masonry, Lath & plaster. Emulsion paint on Wallpaper.	Timber floor Carpet finish	Lath & plaster. White emulsion.	Non- glazed Fire door. Gloss paint finishes several coats. Ironmongery- old satin SS door handle of no historic importance. Door closer	Casement window secondary glazing on W3 . Crittall window frames	W1 - Wall mounted Air con Unit Skirting – 100mm High painted pencil round in white gloss. W2 - Air vent at high level. Shelving for the length of wall.	Plastic trunking on top of skirting. Floor Standing Cast Iron Radiator. Stone Fire place on W4 boarded over.
G3 Prop.	Strip walls of wallpaper and M&E services. Repair cracks and stop in holes. Make good walls, Skim walls Decorate as spec M60 .	Remove exist. Carpet, Rid the floor of glue, staples etc Prepare floor and install new carpet flooring as spec M50 .	New M&E service installations refer to M&E spec. Skim finish M20 Prepare and decorate as spec M60 .	Retain doorframe, lining architrave. Supply and fit new 4-pannelled fire doors to spec L20 complete with Ironmongery as spec. P21	Refurbish existing windows as spec. L10 . Decorate frame and Architrave.	Strip out shelving noggins. Strip out existing skirting and install Ogee skirting and decorate as spec M60 .	Install new steel radiator. Refer to M&E spec. Allow for dado trunking.

Room G3 - Images

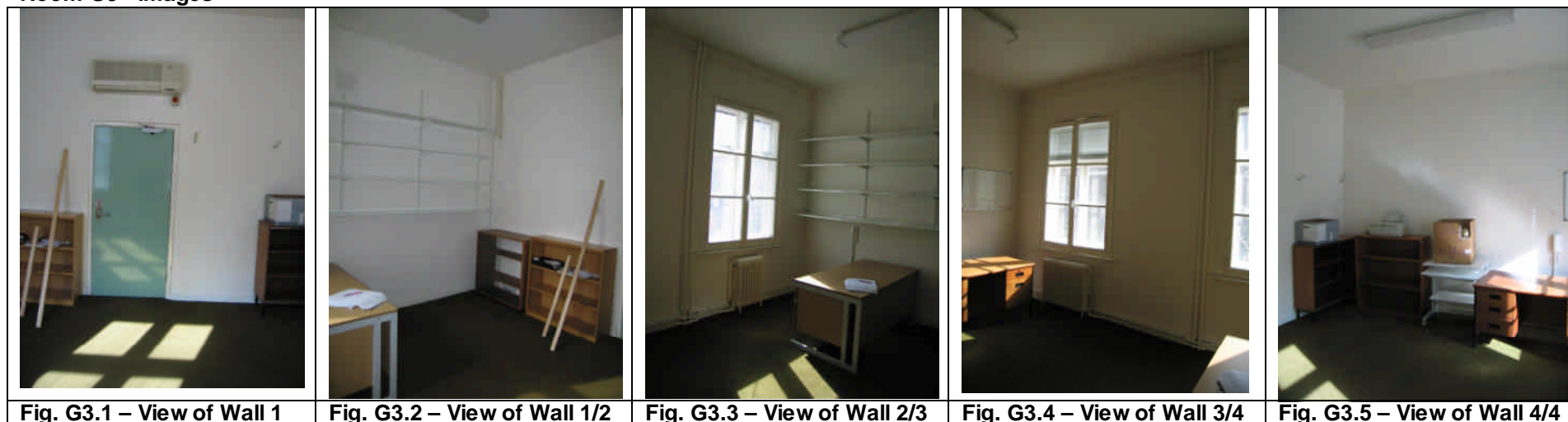


Fig. G3.1 – View of Wall 1

Fig. G3.2 – View of Wall 1/2

Fig. G3.3 – View of Wall 2/3

Fig. G3.4 – View of Wall 3/4

Fig. G3.5 – View of Wall 4/4

UCL TORRINGTON PLACE DEVELOPMENT PHASE 5. SHEDULE OF WORKS

GROUND FLOOR

Room	Walls	Floor	Ceiling	Door/Ironmongery	Window	Fixtures/Fittings	Notes
G4 Exist.	Lath & plaster. White emulsion paint on Walls paper.	Timber floor Carpet finish	Lath & plaster. Wall papered and painted in white emulsion. Decorative plaster coving	Fire door Upper. Single pane Georgian wire. Gloss paint finishes several coats. Ironmongery- old satin SS door handle of no historic significance.	Sash window on W3 . Timber panelled reveal. Cills in poor condition. Timber Panelling on reveals	W1 - Retain and redecorate service pipes at high-level length of room. Skirting – 230mm High Ogee painted in white gloss. W4 - Marble fire surround. Fireplace boarded up and air vent above.	Redundant power sockets and discontinued metal trunking remain on walls. Floor Standing Cast Iron Radiator. Stone Fire place.
G4 Prop.	Strip walls of wallpaper and M&E services. Repair cracks and stop in holes. Make good walls, Skim walls Decorate as spec M60 .	Remove exist. Carpet, Rid the floor of glue, staples etc Prepare floor and install new carpet flooring as spec M50 .	Strip ceiling of wallpaper. New service installations refer to M&E spec. Skim finish M20 Prepare and decorate as spec M60 .	Retain doorframe, lining architrave. Provide new 4-panelled door spec L20 complete with Ironmongery P21 .	Refurbish windows. Prepare and decorate timber reveal panelling, under window panel and window cills as spec M60 .	Supply and fix Ogee skirting to match and decorate as specified. Form opening for lift door on W1 at the corner with W4 .	Strip out existing radiator and Install new steel radiator. Refer to M&E spec. Allow for dado trunking. <i>Form opening on floor, ceiling and wall W4 at door height for disabled lift. Store floor joists and materials for future restoration</i>

ROOM 4 - IMAGES

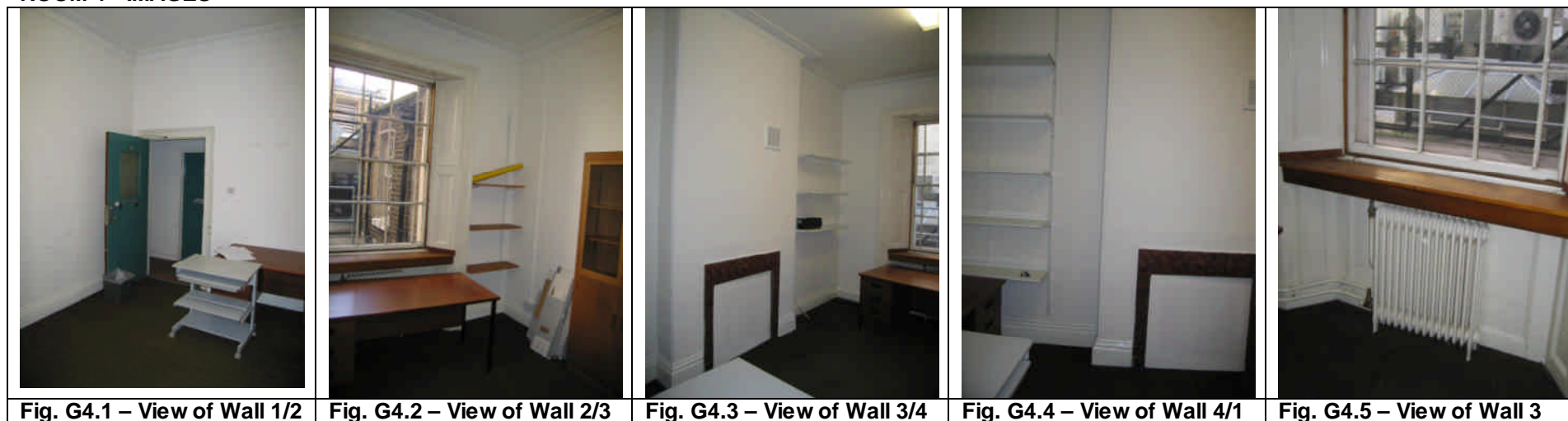


Fig. G4.1 – View of Wall 1/2

Fig. G4.2 – View of Wall 2/3

Fig. G4.3 – View of Wall 3/4

Fig. G4.4 – View of Wall 4/1

Fig. G4.5 – View of Wall 3

UCL TORRINGTON PLACE DEVELOPMENT PHASE 5. SHEDULE OF WORKS GROUND FLOOR

Room	Walls	Floor	Ceiling	Door/Ironmongery	Window	Fixtures/Fittings	Notes
G51 Exist.	Masonry wall. Emulsion painted and Tiled finishes.	Timber floor Vinyl finish	Concrete slab. Emulsion paint finish.	Solid core Flush door Gloss paint finishes several coats. Ironmongery- old satin SS door handle of no historic significance.	Single glazed timber framed window on W4 . Architrave to all sides of opening.	Wall & Floor mounted Sanitary ware. Wall mounted soap dispenser, paper towel dispenser, Radiator etc.	New layout to form a disabled toilet.
G51 Prop.	Strip out M&E services. Strip out wall tiles. Repair cracks and stop in holes. Make good walls, Skim walls as Spec M20 Decorate as spec M60	Strip out vinyl flooring coving etc. Rid the floor of glue, staples etc prepare floor as specified and install new vinyl flooring.	New false ceiling as spec K40 New extract fan on ceiling and duct out thro' void and hole in wall at H/L. Refer to M&E spec.	Retain doorframe, lining architrave. Provide new 4-panelled door complete with Ironmongery as P21	Refurbish existing windows as spec. L10 . Decorate frame and Architrave.	New Sanitary appliances as spec. N13 . New PTD, SD and hand dryer.	Demolish internal walls. Construct new walls (new layout) to form two WC cubicles. Refer to M&E spec. for new M&E services.

ROOM 51 IMAGES

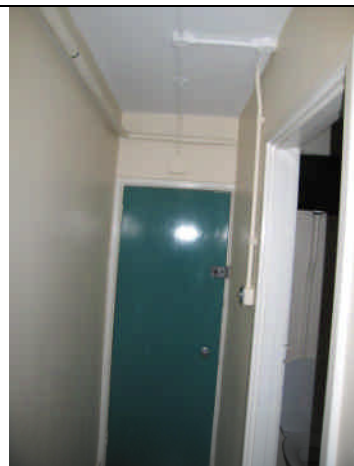


Fig. G51.1 – View of Wall 1/2



Fig. G51.2 – View of Wall 2/3



Fig. G51.3 – View of Wall 3/4



Fig. G51.4 – View of Wall 4/1

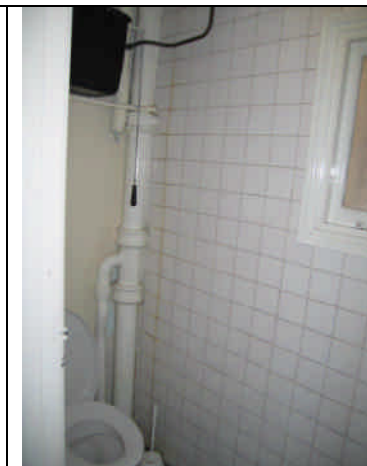


Fig. 51.5 – View of Wall 3

UCL TORRINGTON PLACE DEVELOPMENT PHASE 5. SHEDULE OF WORKS

GROUND FLOOR

Room	Walls	Floor	Ceiling	Door/Ironmongery	Window	Fixtures/Fittings	Notes
G52 Exist.	All walls white emulsion paint on Walls paper.	Timber floor Vinyl finish	Lath & plaster. Wall papered and painted in white emulsion. Decorative plaster coving	Timber framed glazed Entrance door with side panel. Gloss finish. Internal Flush doors to basement and WC. Ironmongery- old satin SS door handle of no significant historic value.	None	Skirting – 230mm Ogee in green gloss finish.	Plastic trunking on top of skirting. Floor Standing Cast Iron Radiator supported on W2 .
G52 Prop.	Strip out services. Strip wallpaper. Repair cracks and stop in holes. Make good walls, Skim walls as Spec M20 Decorate as spec M60	Remove exist. Vinyl, did the floor of glue, adhesive etc prepare floor and install new entrance matting Carpeting as spec. M50	<u>In hall way and landing</u> , Strip ceiling of wallpaper. New service installations refer to M&E spec. Skim finish M20 Prepare and decorate as spec M60 .	Retain doorframe, lining architrave. Supply and fix new entrance door and side panel as Spec L20 . New 4-panelled Internal door to WC & basement. Ironmongery as spec P21 .		Decorate existing skirting as spec M60 . <i>New service cupboard to house services and panels</i>	Strip out M&E services and trunking. New M&E services. Refer to M&E spec for new services. <i>In corridor area- New false ceiling with plasterboard margin and coving on all sides and lay-in metal planks in the middle of corridor as spec K10 & K40 (Typical details)</i>

ROOM 52 IMAGES



Fig. G52.1– View of Wall 1/2



Fig. G52.2 – View of Wall 2/3



Fig. G52.3 – View of Wall 3/4

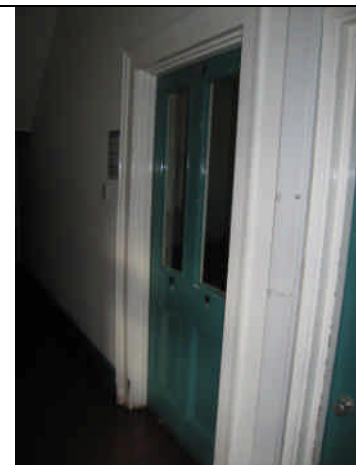


Fig. G52.4 – View of Wall 4/1

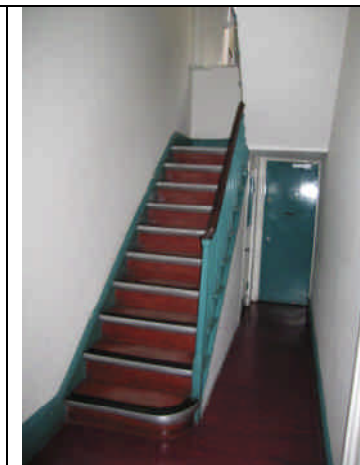


Fig. G52.5 – View of Wall 1&4

UCL TORRINGTON PLACE DEVELOPMENT PHASE 5. SHEDULE OF WORKS GROUND FLOOR

Room	Walls	Floor	Ceiling	Door/Ironmongery	Window	Fixtures/Fittings	Notes
G53 Exist.	Masonry/ lath & plaster. Emulsion painted and Tiled finishes.	Timber floor Vinyl finish	Concrete slab. Emulsion paint finish.	Solid core Flush door Gloss paint finishes several coats. Ironmongery- old satin SS door handle of no historic significance.	Single glazed timber framed window with air vent on W4 . Architrave to all sides of opening.	Wall & Floor mounted Sanitary ware. Wall mounted soap dispenser, paper towel dispenser, Radiator etc.	Wall mounted cast iron radiator. Supply and waste pipes.
G53 Prop.	Strip out M&E services. Strip out wall tiles. Repair cracks and stop in holes. Make good walls, Skim walls as Spec M20 Decorate as spec M60	Strip out vinyl flooring coving etc. Rid the floor of glue, staples etc prepare floor and install new vinyl flooring as spec. M50	Repair cracks and stop in holes. Make good walls, Skim Skim finish Prepare and decorate as Spec M20	Retain doorframe, lining architrave. Provide new 4-panelled door complete with Ironmongery as P21	Refurbish existing windows and redecorate as spec L10 .	Supply and fix coved skirting as spec M50 . New Sanitary appliances as spec. N13 . New PTD, SD and hand dryer.	Refer to M&E spec. For new M&E services.

ROOM 53 IMAGES



Fig. G53.1 – View of Wall 1/2

Fig. G53.2 – View of Wall 2/3

Fig. G53.3 – View of Wall 3/4

Fig. G53.4 – View of Wall 4/1

Fig. 53.5 – View of Wall 3

UCL TORRINGTON PLACE DEVELOPMENT PHASE 5. SHEDULE OF WORKS

GROUND FLOOR

Room	Walls	Floor	Ceiling	Door/Ironmongery	Window	Fixtures/Fittings	Notes
G54 Exist.	Masonry, white emulsion paint finish. Wall papers	Timber floor Vinyl finish.	Lath & plaster. White emulsion.	Timber framed glazed Entrance door with side panel. Green colour gloss paint finishes Several coats. Ironmongery- old satin SS door handle of no significant historic value.	High-level glazing.	Skirting – 230mm Ogee in green gloss finish. Staircase	Plastic trunking on top of skirting. Floor Standing Cast Iron Radiator supported on W2 .
G54 Prop.	Strip out services repair cracks and stop in holes. Make good walls, Skim walls M20 Decorate as spec M60	Remove exist. Vinyl, did the floor of glue, adhesive etc prepare floor and install new carpet flooring as spec. M50	<u>In hall way and landing</u> , Strip ceiling of wallpaper. New service installations refer to M&E spec. Skim finish M20 Prepare and decorate as spec M60 .	Retain existing door, frame, lining & architrave. Decorate as M60 . Retain existing Ironmongery. New 4-panel internal doors (L20)	Prepare and redecorate High-level Glazing as spec M60 .	Supply and fix Ogee skirting to match existing and decorate as spec M60 . Refurbish and redecorate staircase.	Strip out existing radiator and Install new steel radiator. Refer to M&E spec. Allow for dado trunking. Redecorate

ROOM 54 - IMAGES

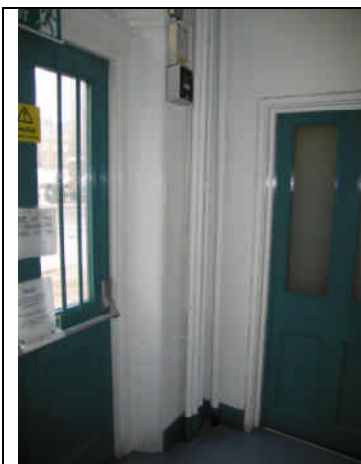


Fig. G54.1– View of Wall 1/2



Fig. G54.2 – View of Wall 2/3

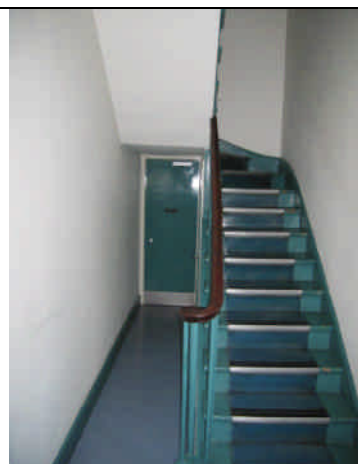


Fig. G54.3 – View of Wall 3/4



Fig. G54.4 – View of Wall 4/1



Fig. G54.5 – View of Wall 1&4

UCL TORRINGTON PLACE DEVELOPMENT PHASE 5. SHEDULE OF WORKS GROUND FLOOR

Room	Walls	Floor	Ceiling	Door/Ironmongery	Window	Fixtures/Fittings	Notes
G55 Exist.	Lath & Plaster with emulsion paint finish. Service trunking at high level.	Timber floor Vinyl finish	Lath & plaster. White emulsion.	Timber flush fire door with Georgian wired glass pane and 4-panel fire door with Georgian wired glazing on top. Ironmongery- old satin SS door handle of no significant historic value.	None	Skirting – 100mm pencil round in white gloss finish. Wall mounted fire extinguishers, fire trays notice board.	New false ceiling incorporated to hide the M&E services
G55 Prop.	Strip out all M&E services repair cracks and stop in holes. Make good walls, Skim walls M20 Decorate as spec M60 <i>Service penetration thro' corridor wall at H/L above false ceiling level.</i>	Remove exist. Vinyl, rid the floor of glue, adhesive etc prepare floor and install new Carpet flooring as spec. M50	<u>In hall way and landing</u> , Strip ceiling of wallpaper. New service installations refer to M&E spec. Skim finish M20 Prepare and decorate as spec M60 .	Supply and fix new 4 panel internal doors, doorframe, lining architrave. Provide new Front door and side panel spec. (L20) complete with Ironmongery (P21).	<i>End of corridor on all floor:- Form opening in floor and ceiling at and construct new full height service encasement. Decorate to match adjacent wall.Allow access to services.</i>	Strip out fixtures and fittings. Hand Fire extinguishers to CA to be reused on completion of project. Supply and fix 230mm high Ogee skirting to match and decorate as specified (M60).	Strip out M&E services and trunking. New M&E services. Refer to M&E spec for new services. <i>In corridor area, New false ceiling with plasterboard margin and coving on all sides and lay-in metal planks in the middle of corridor as spec K10 & K40 (Typical details)</i>

ROOM 55 - IMAGES



Fig. G55.1– View 1

Fig. G55.2 – View 2

Fig. G55.3 – View 3

Fig. G55.4 – View 4

Fig. G55.5 – View 5

UCL TORRINGTON PLACE DEVELOPMENT PHASE 5. SHEDULE OF WORKS GROUND FLOOR

UCL TORRINGTON PLACE DEVELOPMENT PHASE 5. SHEDULE OF WORKS

FIRST FLOOR

First Floor - Survey of building carried out on 27 February 2009. To be read in conjunction with **WMP 4921- L (01) 05**

Room	Walls	Floor	Ceiling	Door/Ironmongery	Window	Fixtures/Fittings	Notes
1.1 Exist.	Lath & Plaster emulsion paint on Wallpaper. Heating pipes at low level.	Timber floor Carpet finish	Lath & plaster. Poor finish. Appear crumbling. Wall papered and painted in white emulsion. Decorative plaster coving	Old 4 panelled fire door Upper Georgian wire - glazed panes (longer). Several coats Gloss paint finishes. Ironmongery- old satin SS door handle of no historic importance.	Sash window on W4 . Georgian glazing bars. Timber window cills in poor condition. Timber Panelling on reveals	Skirting – 230mm High Ogee painted in white gloss. 100mm pencil round on W4 white. Stone Fireplace boarded up and air vent above. Wall shelving.	Redundant power sockets and discontinued metal trunking remain on walls. Floor Standing Cast Iron Radiator. Stone Fire place.
1.1 Prop	Strip out M&E services. Strip walls of wallpaper. Repair cracks and Make good walls, Skim M20 Decorate as spec M60 .	Remove exist. Carpet, Rid the floor of glue, staples etc Prepare floor and install new carpet flooring as spec M50 .	Strip ceiling of wallpaper. Allow for the installation of new services. Skim finish M20 Prepare and decorate as spec M60 .	Retain doorframe, lining architrave. Provide new matching 4-panelled fire door spec L20 complete with Ironmongery P21 .	Refurbish Sash window. Restore timber frame and surround. Prepare and redecorate existing window and secondary glazing and cills as spec M60 .	Remove shelving and noggin. Repair cracks and Make good walls. Retain Ogee skirting on W1 , W2 & W3 . Replace skirting on W4 with matching Ogee skirting. Decorate fireplace and walls as spec. M60	Allow for dado trunking. Provide new steel radiator at new location away from the window. Refer to M&E spec. Radiator.

Room 1.1 - Images



Fig. 1.1.1 – View of Wall 1

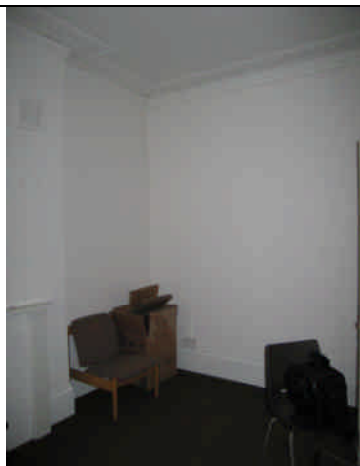


Fig. 1.1.2 – View of Wall 1/2



Fig.1.1. 3 – View of Wall 2/3



Fig. 1.1.4 – View of Wall 3



Fig. 1.1.5 – View of Wall 4