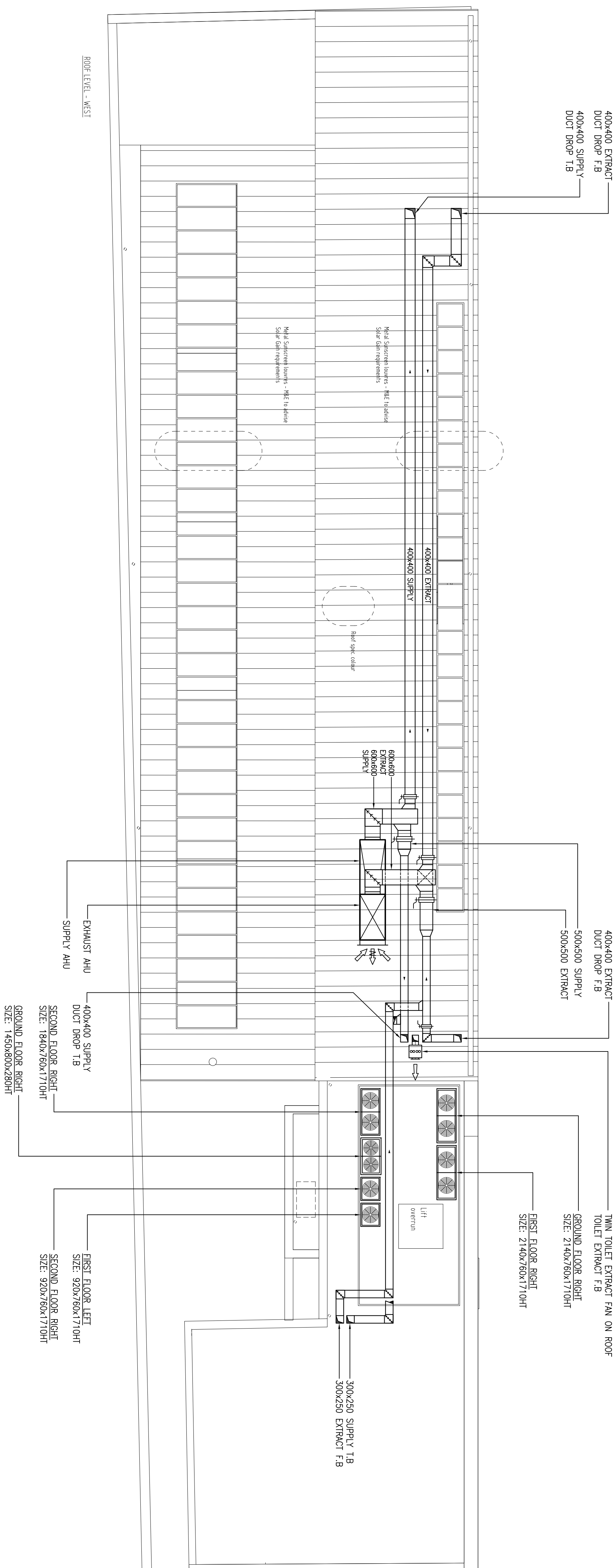



NOTES

1. THE COPYRIGHT OF THIS DRAWING REMAINS THE PROPERTY OF PVE CONSULTING. NO UNAUTHORISED REPRODUCTION IN ANY FORM IS PERMITTED WITHOUT PRIOR CONSENT FROM THE OWNER.
2. ANY FURNITURE LAYOUT INDICATED ON THESE DRAWINGS IS FOR ILLUSTRATE PURPOSES ONLY. REFER TO THE ARCHITECTS DRAWINGS FOR CORRECT DETAILING.

3. DO NOT DERIVE DIMENSIONS FROM DIGITAL MEDIA



		HERON COURT 3 Hiron Street Hampdon TW12 2SQ Tel: 020 8941 1111 Fax: 020 8979 6796 Email: design@pyeinternational.com	
CLIENT RAZAMA LIMITED	PROJECT GLoucester Avenue NEW BUILD PROJECT MIXED USE REDEVELOPMENT		TITLE MECHANICAL SERVICES WORKSPACE WEST ROOF LEVEL
			ARCHITECT RAMSDEN AND PARTNERS
SCALE 1:1'00	DRAWN BY AJB	DWG No. 3300/M008	REV A
DATE SEP 08	CHECKED BY		