

Plotted 24/07/2008  
Filename: L:\Projects\2000\_etc\2047\CAD\plot\21\21-600.plt.dgn



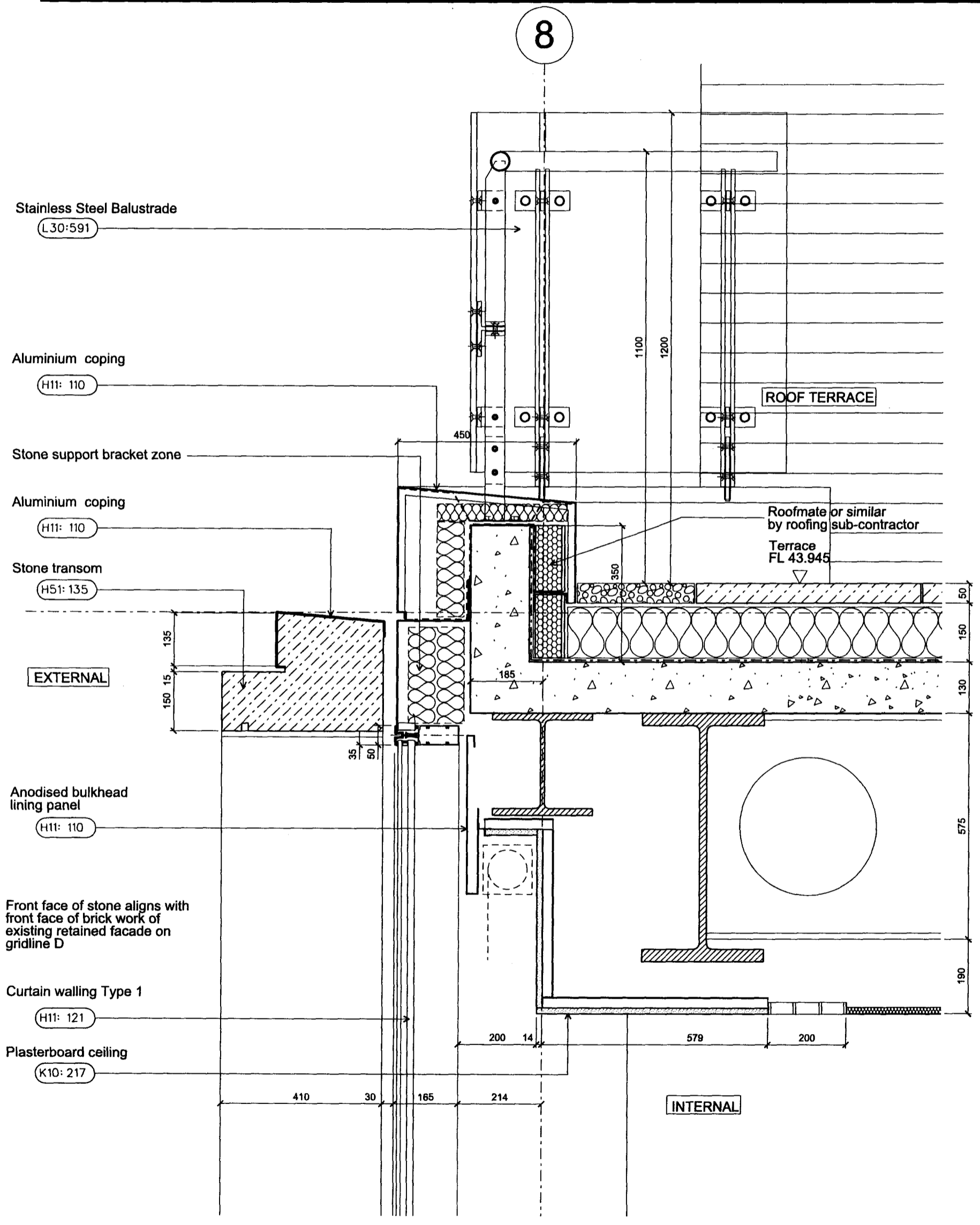
LOCATION 77 PARKWAY . CAMDEN TOWN  
LONDON . NW1 7PU  
PHONE +44 0 20 7504 1700  
FAX +44 0 20 7504 1701  
WEBSITE www.sheppardrobson.com  
E-MAIL sr.mail@sheppardrobson.com

One Southampton Row  
London

ARCHITECTURE URBAN DESIGN PLANNING INTERIORS

DRAWING NO. 2047 -21 -600 REV. H

DRAWING	CLADDING DETAIL: SOUTHAMPTON ROW Section Detail 01 - Top Spandrel / Parapet	SCALE @ A3	1:10
AMENDMENTS	F 21/09/07 H 24/07/08	DATE	30.08.2006
	Issued for construction: balustrade changed to stainless steel, stone spandrel modified, window modified Glass balustrade added, coping detail and epdm revised	ORIGINATED BY	TJP
		CHECKED BY	BK
		AUTHORISED BY	BK
		STATUS	CONSTRUCTION



01 SOUTHAMPTON ROW - SECTION DETAIL 01  
TOP SPANDREL / PARAPET

Plotted 22/12/2006

Filename: L:\Projects\2000...etc\2047\CAD\export\2006-12-06\222-Stage D-pending\DWG\No Cloud DWG\21-600-Rev C.dgn



**SHEPPARD ROBSON**

ARCHITECTURE URBAN DESIGN PLANNING INTERIORS

LOCATION 77 PARKWAY, CAMDEN TOWN  
LONDON, NW1 7PU

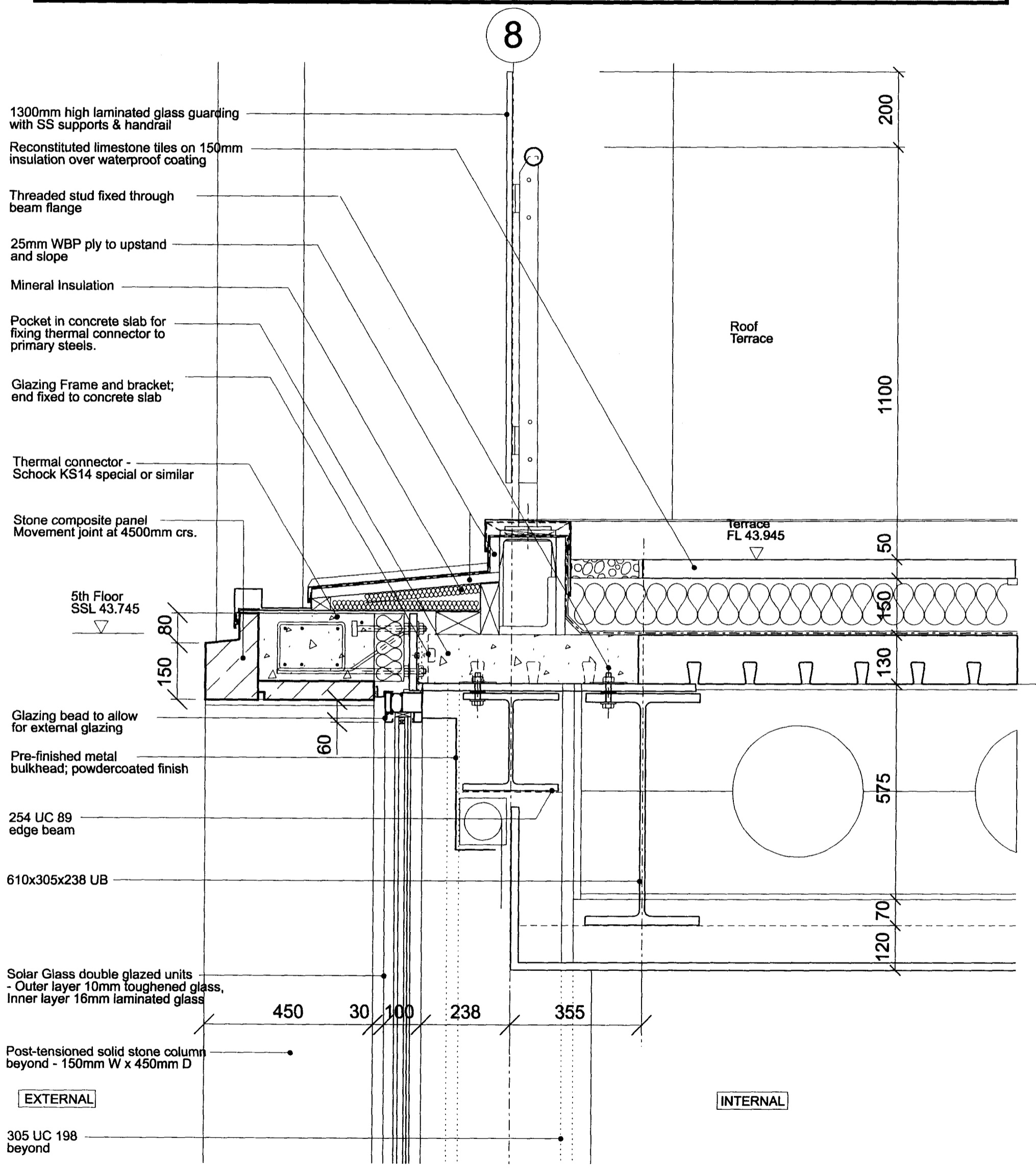
PHONE +44 0 20 7504 1700  
FAX +44 0 20 7504 1701

WEBSITE www.sheppardrobson.com  
E-MAIL sr.mail@sheppardrobson.com

One Southampton Row  
London

DRAWING NO. 2047-21-600 REV. C

DRAWING	CLADDING DETAIL: SOUTHAMPTON ROW Section Detail 01 - Top Spandrel / Parapet	SCALE @ A3	1:10
AMENDMENTS	A 14.09.2006 Notes Amendments to structure B 31.10.2006 Issued for Stage D comment C 08.12.2006 Issued for Stage D	DATE	30.08.2006
		ORIGINATED BY	DP
		CHECKED BY	EJ
		AUTHORISED BY	BK
		STATUS	FOR INFORMATION



01 SOUTHAMPTON ROW - SECTION DETAIL 01  
TOP SPANDREL / PARAPET