

40 Queens Grove drawings as approved and proposed based on planning permission "granted subject to conditions and a section 106 legal agreement" on 07.08.08.
Reference: 2008/0679/P

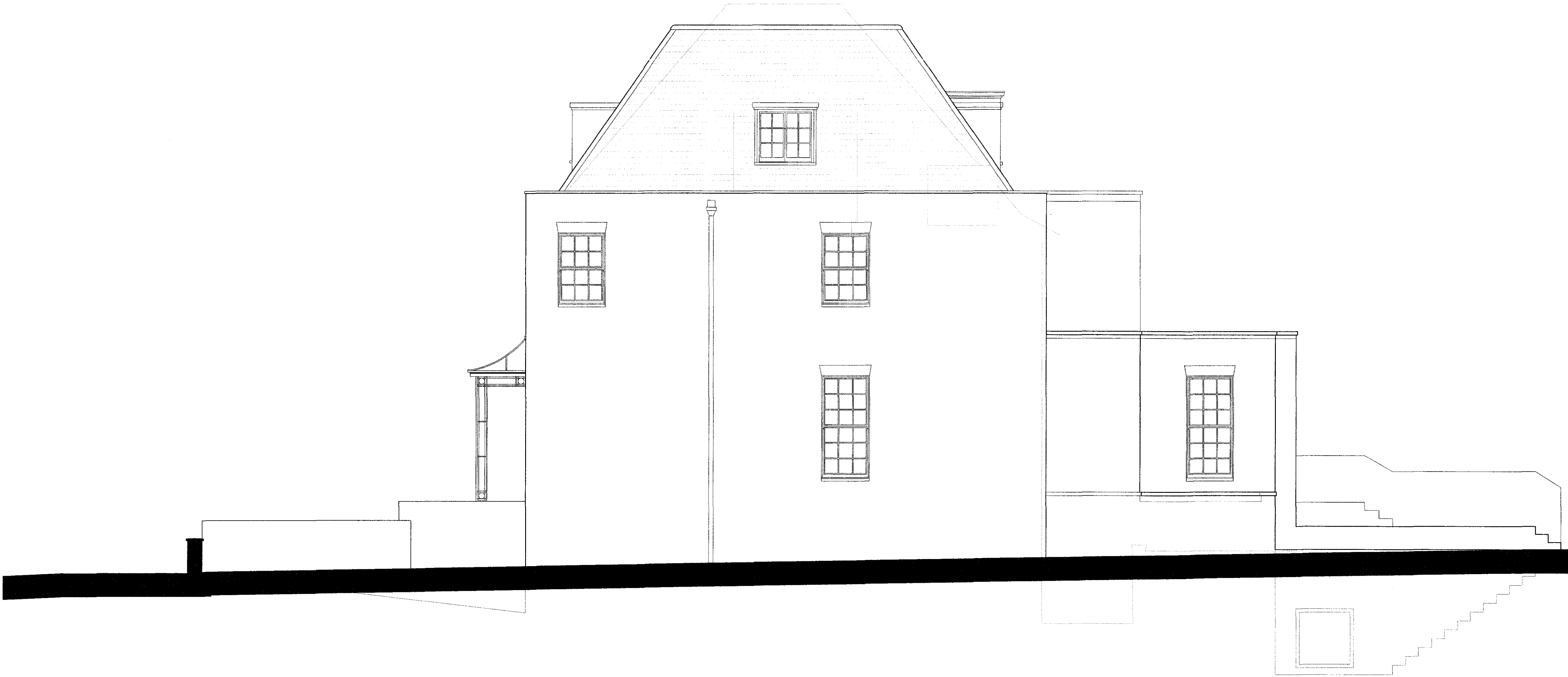
40 Queens Grove rear extension also indicated as per planning permission granted on 26.08.05
Reference: 2005/2482/P

41 Queens Grove drawings as approved based on planning permission granted on 22.11.07
Reference: 2007/3397/P

42 Queens Grove drawings as existing based on planning permission granted on 30.05.07
Reference: 2007/1850/P

Approved structure as per 2008/1365/P
(work has commenced on site)

Demolition lines of original building



APPROVED ELEVATION TO 40 QUEEN'S GROVE

SCALE: 1:50 @A1