

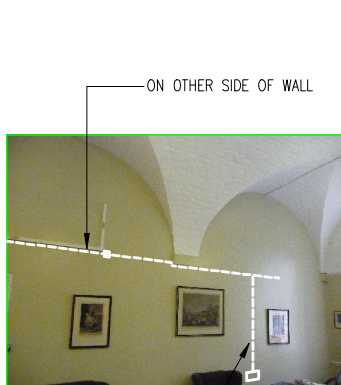
100x100mm CABLE TRUNKING TRAVERSES ROOM AT HIGH LEVEL
20mm CONDUIT



100x100mm CABLE TRUNKING RISES FROM BASEMENT TO HIGH LEVEL GROUND

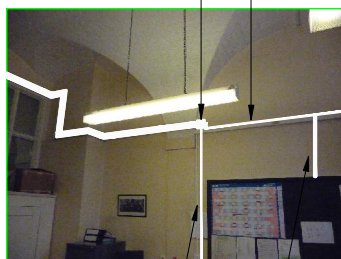


HIGH LEVEL CABLE TRUNKING FROM ROOM BEHIND

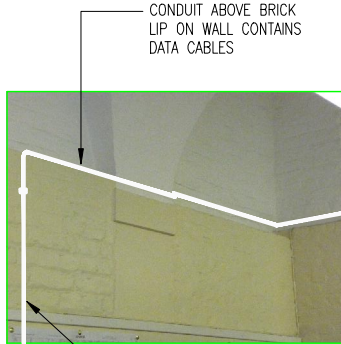


CONDUIT DROP TO DATA OUTLET POINT & ENTERS THIS OFFICE AT LOW LEVEL

100x100mm CABLE TRUNKING AT HIGH LEVEL WITH REAR EXIT TO NEXT ROOM
50x50mm TRUNKING

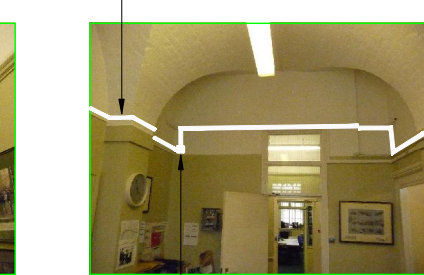


DROP TO DATA POINTS (004 & 005)
DROP TO DATA POINTS (007 & 008)

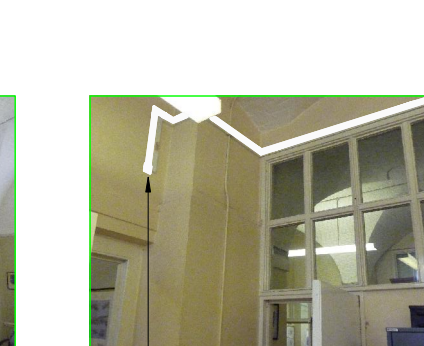


DROP TO DATA OUTLET (016) IN CORNER OF ROOM

CONDUIT ROUTES AT HIGH LEVEL & DROPS TO LOW LEVEL BEFORE EXITING ROOM TO FEED DATA ON OTHER SIDE OF WALL

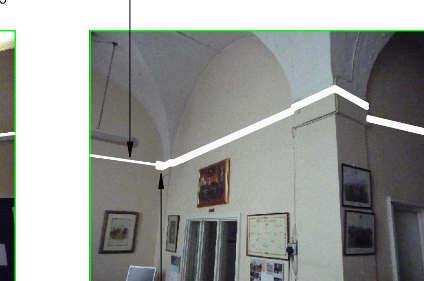


TRUNKING ENTERS AT HIGH LEVEL AND ROUTES ALONG WALL FOLLOWING LINE OF EXISTING TRUNKING



100x100mm TRUNKING ENTERS ROOM AND RISES TO HIGH LEVEL AND CLOSELY FOLLOWS ROUTE OF EXISTING TRUNKING

20mm CONDUIT TO TAP ADJACENT WINDOW



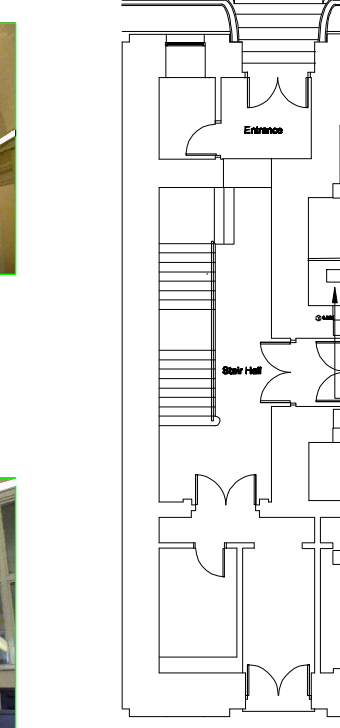
100x100 CABLE TRUNKING AT HIGH LEVEL WITH REAR EXIT TO NEXT ROOM

CABLE TRUNKING EXITS ROOM AT HIGH LEVEL INTO STORE
HIGH LEVEL CONDUIT ON SECONDARY SIDE OF WALL - CONTAINS DATA CABLES



DROP TO DATA OUTLETS (014 & 015)

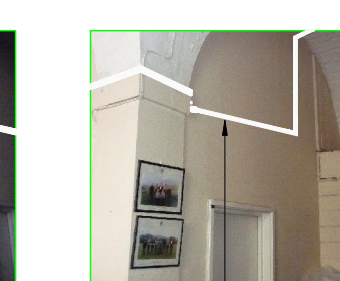
20mm CONDUIT DROP TO L.L.



Ground Floor Plan

20mm CONDUIT DROP TO L.L.

100x100 TRUNKING FROM BASEMENT TO HIGH LEVEL



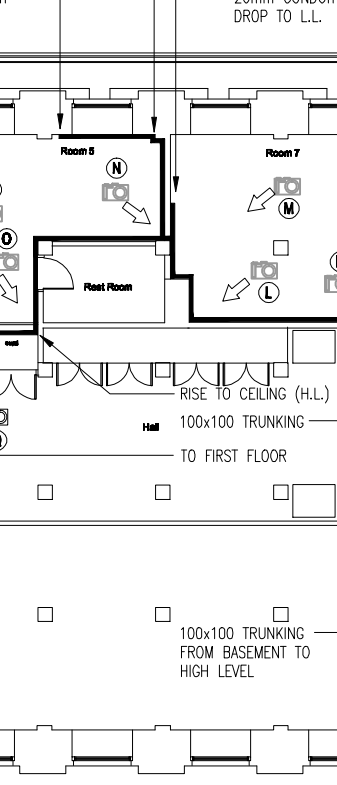
100x100mm HIGH LEVEL TRUNKING ABOVE COLUMN HEAD & STATIONARY CUPBOARD

CABLE TRUNKING EXITS ROOM AT HIGH LEVEL INTO STORE



DROP TO L.L.

20mm CONDUIT DROP TO L.L.



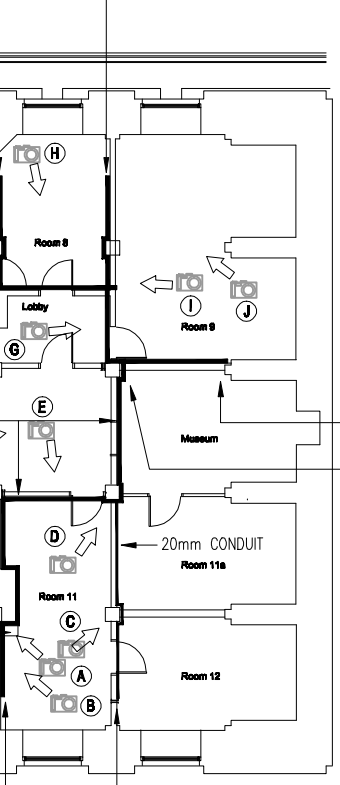
TRUNKING EXITS TO FIRST FLOOR DOCTORS OFFICE

100x100mm CABLE TRUNKING ON OTHER SIDE OF WALL FROM ORNATE SIDE AND ROUTES AT HIGH LEVEL



DROP TO L.L.

20mm CONDUIT DROP TO L.L.



NO EFFECT OF WORKS

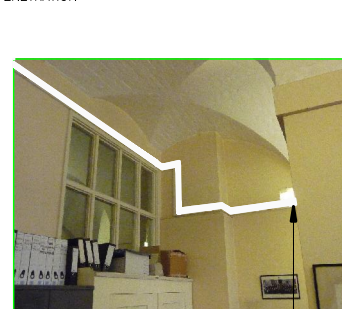


100x100mm CABLE TRUNKING TO ROUTE BEHIND WALL IN STORE AREA

100x100mm TRUNKING ENTERS & EXITS PSAO OFFICE




CONDUIT STEP DOWN BELOW COLUMN HEAD ON OTHER SIDE OF WALL
DROP TO DATA POINTS (012 & 013)



100x100 TRUNKING ENTERS ROOM AND CLOSELY FOLLOWS ROUTE OF EXISTING TRUNKING

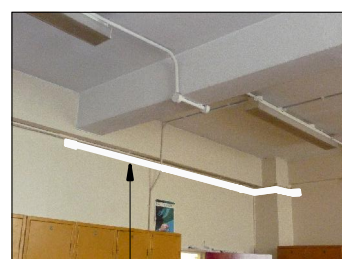
NOTES:

1. THIS DRAWING IS THE PROPERTY OF HITEK CONSULTANTS LIMITED AND IS PROTECTED UNDER THE COPYRIGHTS DESIGNS AND PATENTS ACT 1988. ALL RIGHTS RESERVED. THIS DRAWING IS ISSUED ON CONDITION THAT IT IS NOT COPIED, REPRINTED OR REPRODUCED, WHOLLY OR IN PART, WITHOUT THE CONSENT OF HITEK CONSULTANTS LIMITED.
2. DO NOT SCALE FROM THIS DRAWING.
3. THIS DRAWING SHALL BE READ IN CONJUNCTION WITH THE ARCHITECTS, AND ALL OTHER SERVICES DRAWINGS.
4. THIS DRAWING INDICATES THE DESIGN INTENT ONLY AND SHALL BE DEVELOPED TO A FULLY DESIGNED, CO-ORDINATED AND WORKING DRAWING. REFER TO ARCHITECTS & STRUCTURAL DRAWINGS FOR CO-ORDINATION OF SERVICES WITH STRUCTURE FABRIC AND ALL EQUIPMENT
5. EXISTING CONTAINMENT ROUTES TO BE RE-USED WHERE POSSIBLE AND OLD CONTAINMENT REMOVED WITH TEMPORARY CABLE SUPPORTS WHILST NEW INSTALLATION OF CONTAINMENT PROGRESSES. ROUTING TO BE AS INCONSPICUOUS AS POSSIBLE (ESPECIALLY GROUND & FIRST)
6. THIS DRAWING TO ALSO BE READ IN CONJUNCTION WITH HITEK DRG. No.s
4733.33/E100
4733.33/E101
4733.33/E102
4733.33/E103

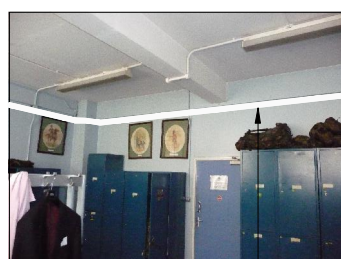
B	DEC 08	MINOR AMENDMENTS	CAM	GCE
A	NOV 08	ROUTING ALTERED	CAM	GCE
Rev	Date	Details	By	Chd
<div><div></div><div>Hitek Consultants Ltd Chartered Building Services Consulting Engineers Barn A, The Stables Parsonage Farm Hollow Hill Lane Iwer, Bucks SL0 0JW T 0870 481 0011 F 0870 481 0012 E info@hitekconsultants.co.uk enq@hitekconsultants.co.uk www.hitekconsultants.co.uk</div></div>				
Project LINCOLNS INN (STONE BUILDINGS) DII GFA & ATLAS WORKS				
Client M.O.D. WHITEHALL				
Architect				
Title GROUND FLOOR PROPOSED ROUTING OF DATA & SERVICES TRUNKING				
Scale	N.T.S. @ A3		Drawing no.	4733.33/A101
Date	SEPT 2008		Revision	B
Designed	GCE		Cost ref	4733.33 A101B
Drawn	CAM		Checked	GCE
<div>COPYRIGHT NOTICE THIS DRAWING REMAINS THE PROPERTY OF HITEK CONSULTANTS LIMITED. COPIES OF THIS DRAWING OR PARTS THEREOF ARE PROHIBITED WITHOUT EXPRESS PERMISSION</div>				

NOTES:

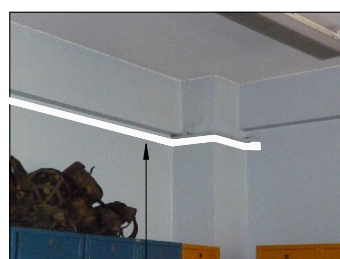
1. THIS DRAWING IS THE PROPERTY OF HITEK CONSULTANTS LIMITED AND IS PROTECTED UNDER THE COPYRIGHTS DESIGNS AND PATENTS ACT 1988. ALL RIGHTS RESERVED. THIS DRAWING IS ISSUED ON CONDITION THAT IT IS NOT COPIED, REPRINTED OR REPRODUCED, WHOLLY OR IN PART, WITHOUT THE CONSENT OF HITEK CONSULTANTS LIMITED.
2. DO NOT SCALE FROM THIS DRAWING.
3. THIS DRAWING SHALL BE READ IN CONJUNCTION WITH THE ARCHITECTS, AND ALL OTHER SERVICES DRAWINGS.
4. THIS DRAWING INDICATES THE DESIGN INTENT ONLY AND SHALL BE DEVELOPED TO A FULLY DESIGNED, CO-ORDINATED AND WORKING DRAWING. REFER TO ARCHITECTS & STRUCTURAL DRAWINGS FOR CO-ORDINATION OF SERVICES WITH STRUCTURE FABRIC AND ALL EQUIPMENT
5. EXISTING CONTAINMENT ROUTES TO BE RE-USED WHERE POSSIBLE AND OLD CONTAINMENT REMOVED WITH TEMPORARY CABLE SUPPORTS WHILST NEW INSTALLATION OF CONTAINMENT PROGRESSES. ROUTING TO BE AS INCONSPICUOUS AS POSSIBLE (ESPECIALLY GROUND & FIRST)
6. THIS DRAWING TO ALSO BE READ IN CONJUNCTION WITH HITEK DRG. No.s
4733.33/E100
4733.33/E101
4733.33/E102
4733.33/E103



④ HIGH LEVEL TRUNKING UNDER BEAM



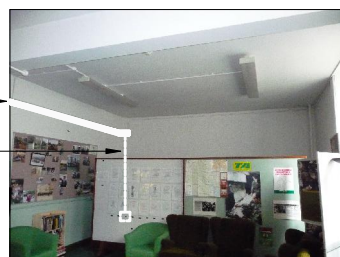
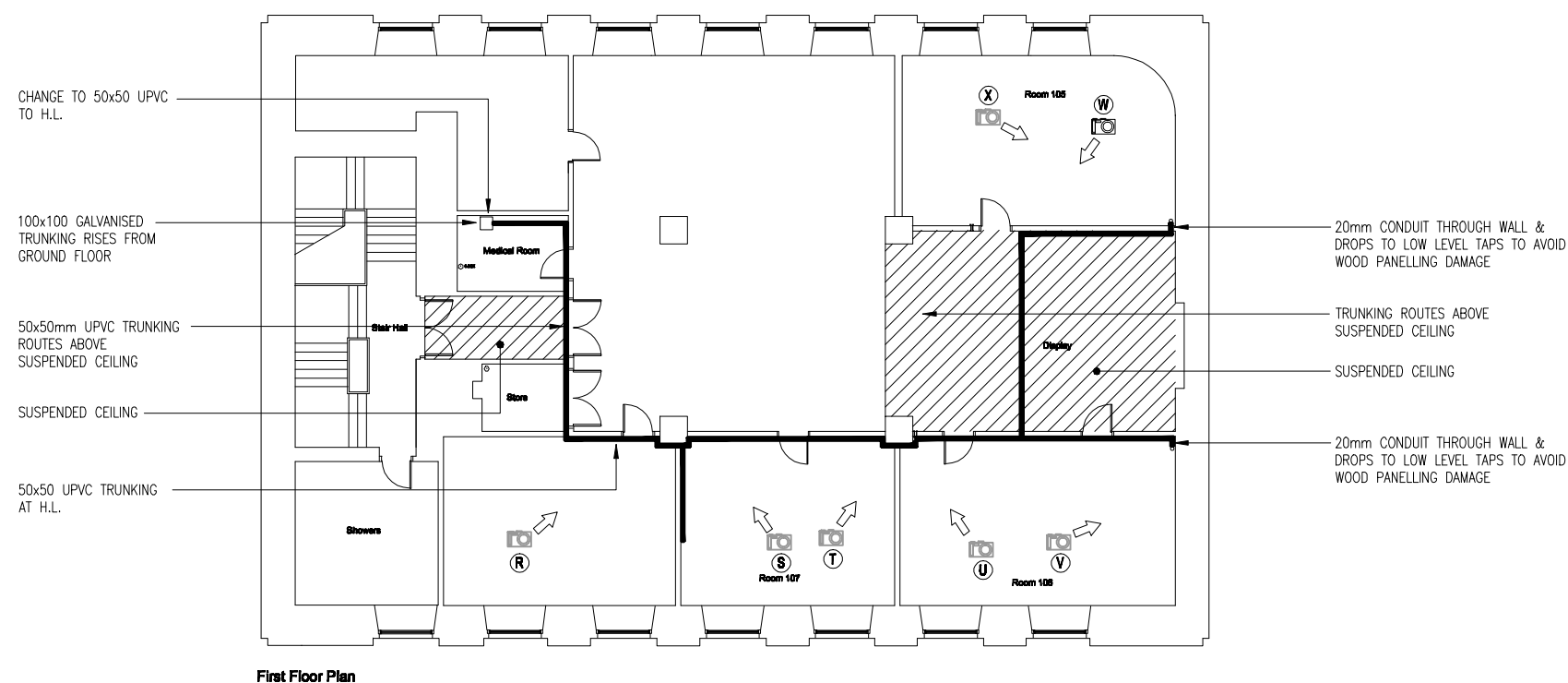
S HIGH LEVEL TRUNKING
UNDER BEAM



① HIGH LEVEL TRUNKING
UNDER BEAM



U HIGH LEVEL TRUNKING UNDER BEAM



HIGH LEVEL TRUNKING —————>
UNDER BEAM

COMBINED DROP TO —————
DATA POINTS (019 TO
022) IN CORNER TO
AVOID WOODEN
PANELLING DAMAGE



☐ NO ACTION



(X)

B	DEC 08	MINOR AMENDMENTS	CAM	GCB
A	NOV 08	ROUTING ALTERED	CAM	GCB
Rev	Date	Details	By	Ch



Hitek Consultants Ltd
Chartered Building Services Consulting Engineers
Barn A, The Stables
Parsonage Farm
Hollow Hill Lane
Iwer, Bucks
SL0 0JW

T 0870 481 0011
F 0870 481 0012
E info@hitekconsultants.co.uk
caso@hitekconsultants.co.uk
www.hitekconsultants.co.uk

Project
LINCOLNS INN (STONE BUILDINGS)
DII GFA & ATLAS WORKS

Client
M.O.D. WHITEHALL

Title
**FIRST FLOOR
PROPOSED ROUTING OF DATA
& SERVICES TRUNKING**

Scale	N.T.S. @ A3	Drawing no.	4733.33/A102
Date	SEPT 2008	Revision	B
Designed	GCE	Code ref	4733.33 A102B
Drawn	CAM	Checked	GCE

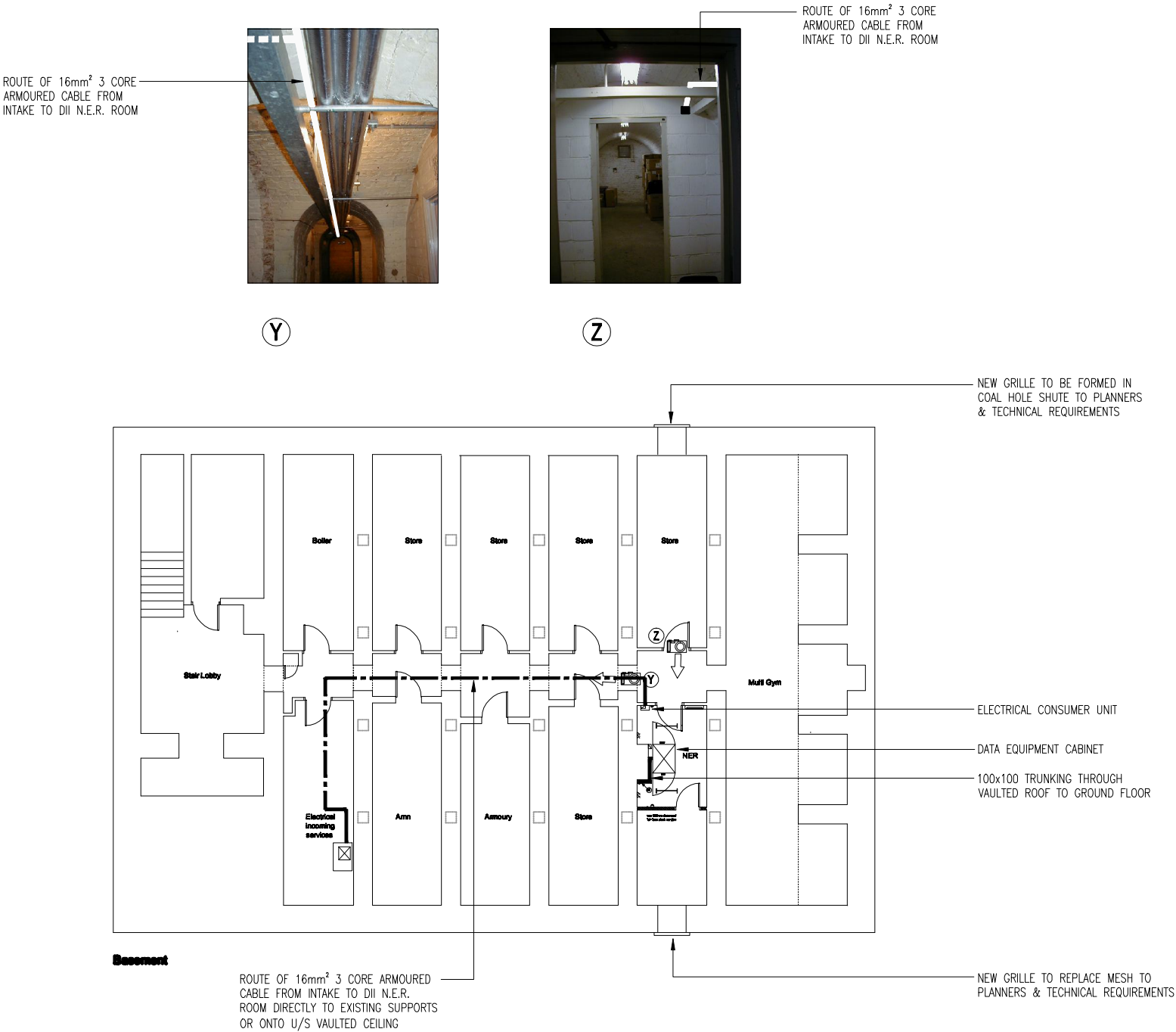
COPYRIGHT NOTICE


THIS DRAWING REMAINS THE PROPERTY OF HITEK CONSULTANTS LIMITED. COPIES OF THIS DRAWING OR PARTS THEREOF ARE PROHIBITED WITHOUT EXPRESS PERMISSION.

THIS DRAWING REMAINS THE PROPERTY OF HITEK CONSULTANTS LIMITED. COPIES OF THIS DRAWING OR PARTS THEREOF ARE FORWARDED WITHOUT EXPRESS PERMISSION

NOTES:

1. THIS DRAWING IS THE PROPERTY OF HITEK CONSULTANTS LIMITED AND IS PROTECTED UNDER THE COPYRIGHTS DESIGNS AND PATENTS ACT 1988. ALL RIGHTS RESERVED. THIS DRAWING IS ISSUED ON CONDITION THAT IT IS NOT COPIED, REPRINTED OR REPRODUCED, WHOLLY OR IN PART, WITHOUT THE CONSENT OF HITEK CONSULTANTS LIMITED.
2. DO NOT SCALE FROM THIS DRAWING.
3. THIS DRAWING SHALL BE READ IN CONJUNCTION WITH THE ARCHITECTS, AND ALL OTHER SERVICES DRAWINGS.
4. THIS DRAWING INDICATES THE DESIGN INTENT ONLY AND SHALL BE DEVELOPED TO A FULLY DESIGNED, CO-ORDINATED AND WORKING DRAWING. REFER TO ARCHITECTS & STRUCTURAL DRAWINGS FOR CO-ORDINATION OF SERVICES WITH STRUCTURE FABRIC AND ALL EQUIPMENT
5. EXISTING CONTAINMENT ROUTES TO BE RE-USED WHERE POSSIBLE AND OLD CONTAINMENT REMOVED WITH TEMPORARY CABLE SUPPORTS WHILST NEW INSTALLATION OF CONTAINMENT PROGRESSES. ROUTING TO BE AS INCONSPICUOUS AS POSSIBLE (ESPECIALLY GROUND & FIRST)
6. THIS DRAWING TO ALSO BE READ IN CONJUNCTION WITH HITEK DRG. No.s
4733.33/E100
4733.33/E101
4733.33/E102
4733.33/E103



B	DEC 08	MINOR AMENDMENTS	CAM	GCE
A	NOV 08	ROUTING ALTERED	CAM	GCE
Rev	Date	Details	By	Chd
<div><div></div><div>Hitek Consultants Ltd Chartered Building Services Consulting Engineers Barn A, The Stables Parsonage Farm Hollow Hill Lane Iver, Bucks SL0 0JW</div><div><div>T 0870 481 0011 F 0870 481 0012 E info@hitekconsultants.co.uk enq@hitekconsultants.co.uk www.hitekconsultants.co.uk</div></div></div>				
Project LINCOLNS INN (STONE BUILDINGS) DII GFA & ATLAS WORKS				
Client M.O.D. WHITEHALL				
Architect				
Title BASEMENT PROPOSED ROUTING OF DATA & SERVICES TRUNKING				
Scale N.T.S. @ A3	Drawing no. 4733.33/A100			
Date SEPT 2008	Revision B			
Designed GCE	Cod ref 4733.33 A100B			
Drawn CAM	Checked GCE			
COPYRIGHT NOTICE THIS DRAWING REMAINS THE PROPERTY OF HITEK CONSULTANTS LIMITED. COPIES OF THIS DRAWING OR PARTS THEREOF ARE PROHIBITED WITHOUT EXPRESS PERMISSION				