

328c Kilburn road

Scale:1/100

1
23 AUG 2008

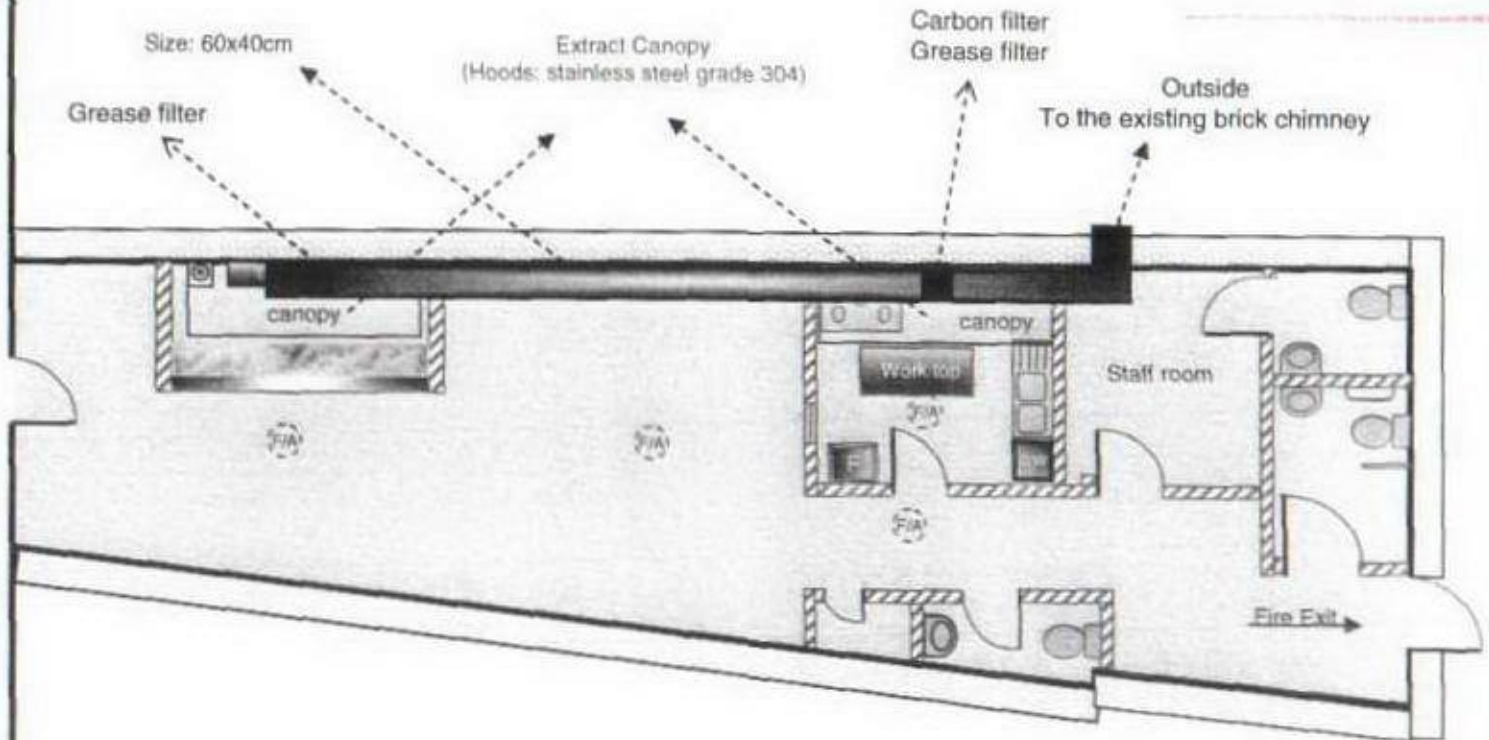
Notes:

Extract Canopy made from 304 Stainless Steel brush finish.
Incorporating grease Filters and Bulkhead lights.
Ventilation System S12ED to give 85 A/C/Hour in kitchen.
Ventilation Plant comprises Ducting from Canopy to Fan.
Fan pre filter activated Carbon Filter, Duct attenuator.
Duct to high level with "Bird Beak" outlet.
Fresh air to kitchen via Weather Louver, Panel Filter & Discharge GE grive
Gas Interlock System to comply with BS.6173.2001 Catering Area shall Be ventilated to provide air for combustion and removal of combustion products, to H.V.C.A Dw/171 Standard for kitchen ventilation Systems.

*FAN DUTY : 2.79 m³/sec @ 100pa
Motor Size : 1450 W
FLC : 6.1 AMPS
RC : 15.1 AMPS
dBa @ 3m : 60

dBa with duct Attenuator 47dBa

Kilburn high road



Proposed Ducting system

Equipments:

- Grill
- Cooker (gas)
- Refrigerator
- Small cold room
- Double sink
- Dish washer
- Fire Alarm (BS 5839)

328c Kilburn High Road London NW6 2QN

Ducting System

Scale: 1/100

Section through the existing chimney

Notes:

Extract Canopy made from 304 Stainless Steel brush finish.
Incorporating grease Filters and Bulkhead lights.

Ventilation System S12ED to give 85 A/C/Hour in cooking area.

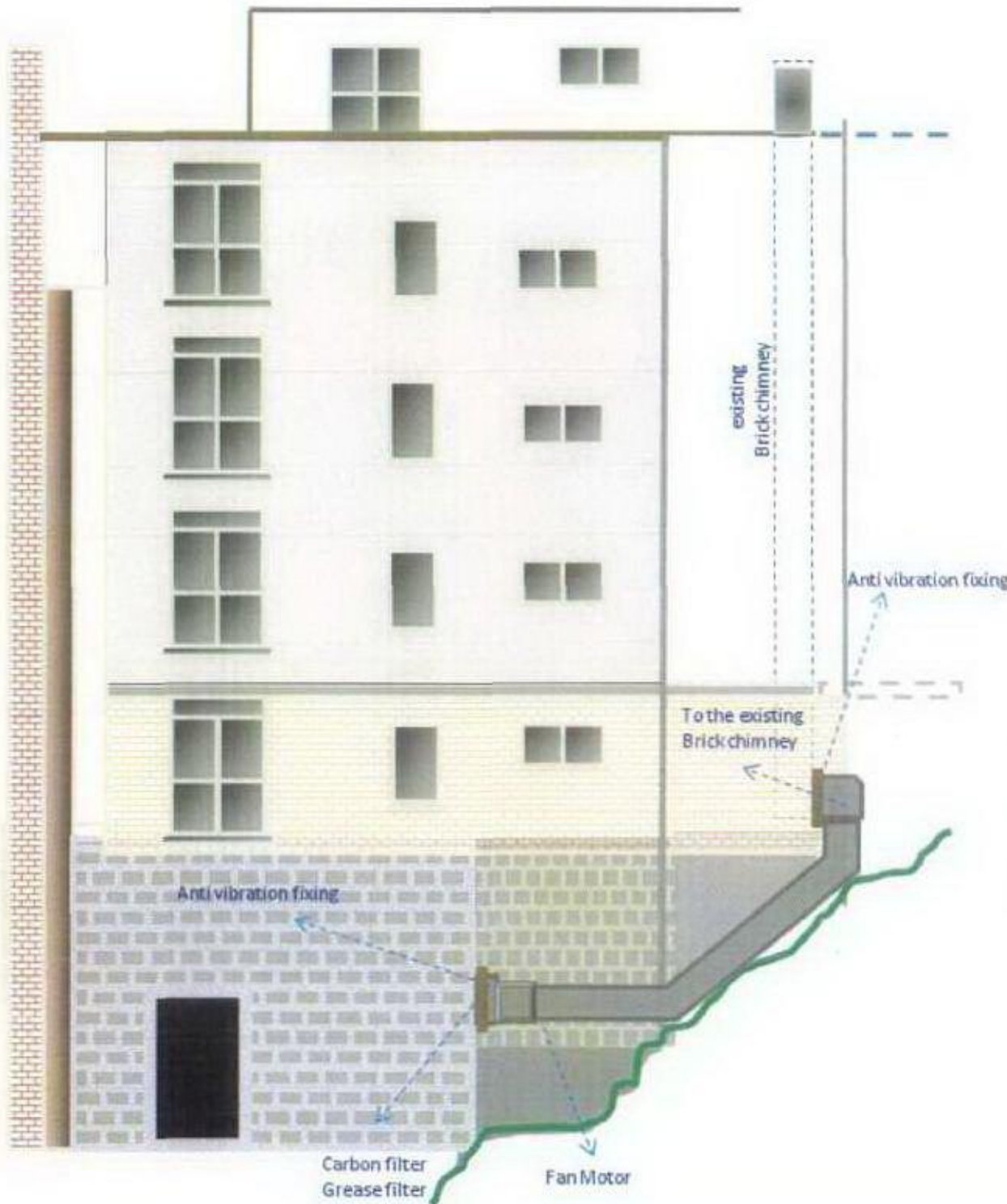
Ventilation Plant comprises Ducting from Canopy to Fan.
Fan pre filter activated Carbon Filter, Duct attenuator.

Gas Interlock System to comply with BS.6173.2001
Catering Area will be ventilated to provide air for combustion and removal of combustion products, to H.V.C.A Dw/171 Standard for cooking area ventilation Systems.

***FAN DUTY** : 1.21m³/sec@100pa
Motor Size : 520 W
FLC : 2.2 AMPS
RC : 5.5 AMPS
dBa@3m : 55

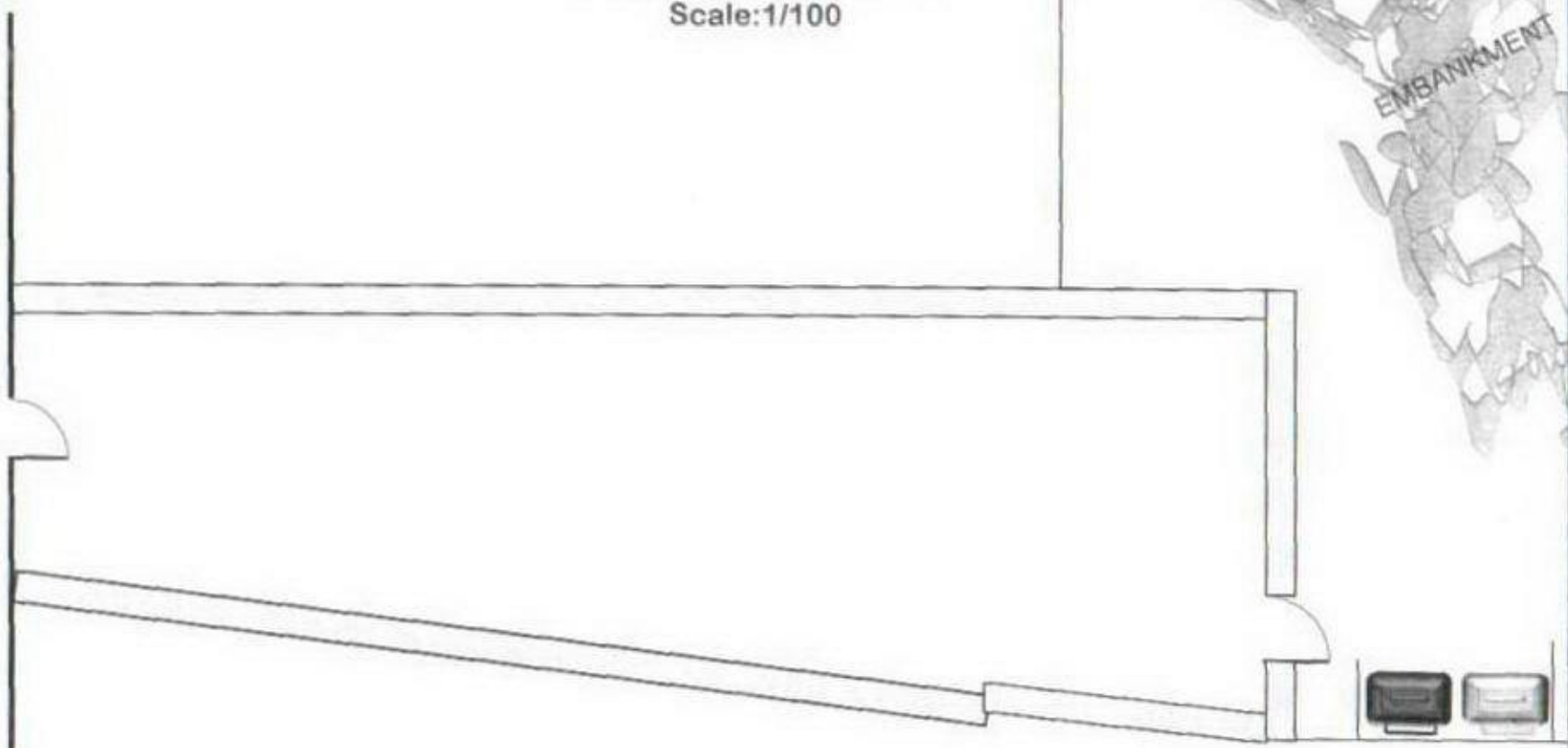
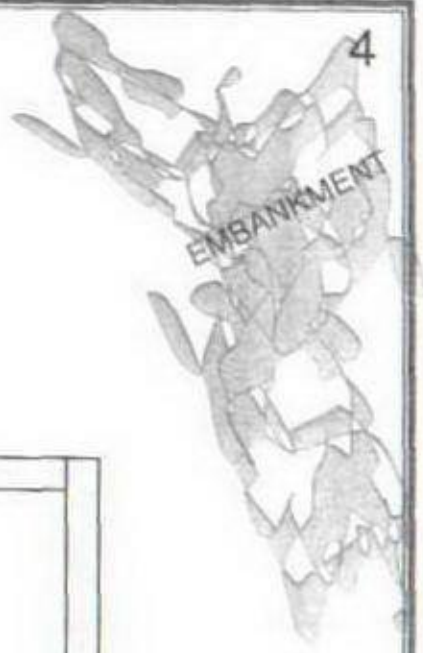
dBa with duct Attenuator 47dBa

*Based on normal Duty.



328c Kilburn road
Scale:1/100

4

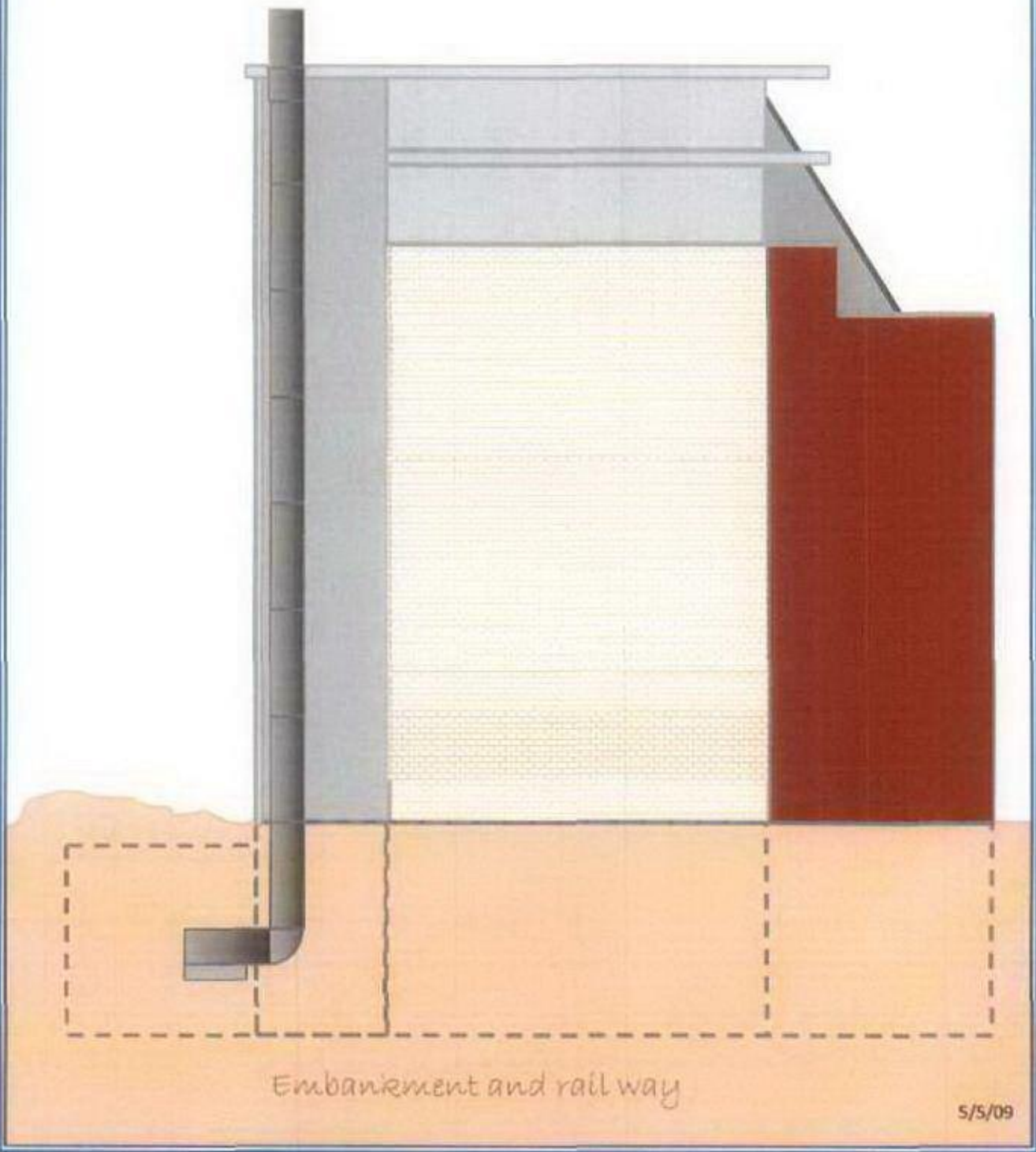


Kilburn High road

Positioning, Size and design of the refuse storage.

328c Kilburn High Road
London NW6 2QN
Side elevation
1/100

3



Embankment and rail way

5/5/09

UNIT SPECIFICATIONS

Cases

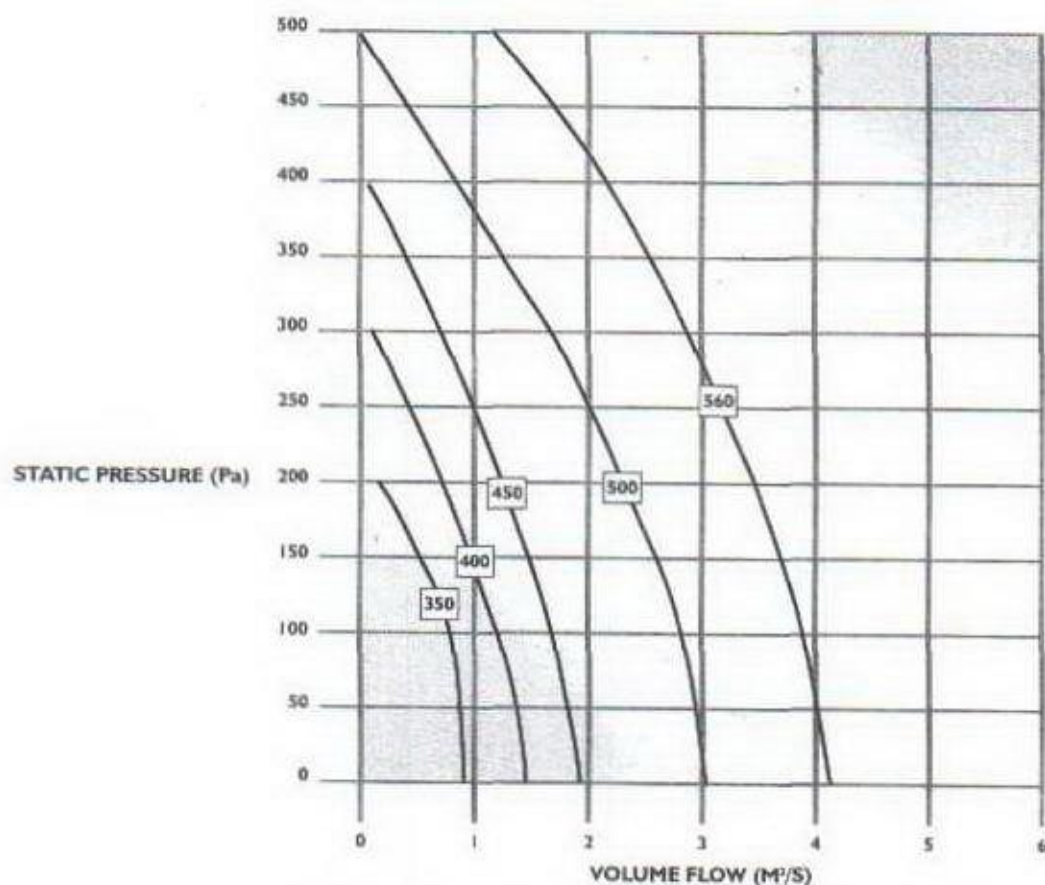
The all-new Square Mixed Flow fan is designed and built in Britain to suit the exacting requirements of the UK market. The range covers volumes up to $4.1 \text{ m}^3/\text{s}$ and pressures up to 650Pa.

The casing is constructed from 1.0mm thick galvanised sheet steel to create an extremely rigid fan unit.

All models come complete with motors that are protected to IP 44 and incorporate THERMAL motor protection to prevent the motor from overheating. These units also utilise external rotor motors, which have been chosen for their proven reliability, quality and performance.

A unique integral terminal box allows for electrical connections on two sides of the casework to ensure the unit is flexible during installation.

Performance



Model	Motor (W)	Supply	FLC (A)	SC (A)	dB(A) @3m (Inlet)	Air flow volume (m³/s) against static pressure (Pa)																
						0	50	100	150	200	250	300	350	400	450	500						
QMF350/4/1	310	230V 1 Ph	1.35	3.7	52	0.97	0.91	0.77	0.53	0.17												
QMF400/4/1	520	230V 1 Ph	2.2	5.5	55	1.44	1.37	1.21	0.98	0.68	0.39	0.12										
QMF450/4/1	960	230V 1 Ph	4.3	9.6	37	1.94	1.85	1.7	1.48	1.26	1	0.66	0.37	0.1								
QMF500/4/1	1450	230V 1 Ph	6.1	15.1	60	3.03	2.92	2.79	2.57	2.31	2	1.65	1.23	0.84	0.5	0.18						
QMF560/4/3	2400	415V 3Ph	4.3	22.0	68	4.12	4.03	3.85	3.65	3.4	3.19	2.88	2.58	2.15	1.67	1.26						

328c Kilburn High Road
London NW6 2QN

Roof plan

