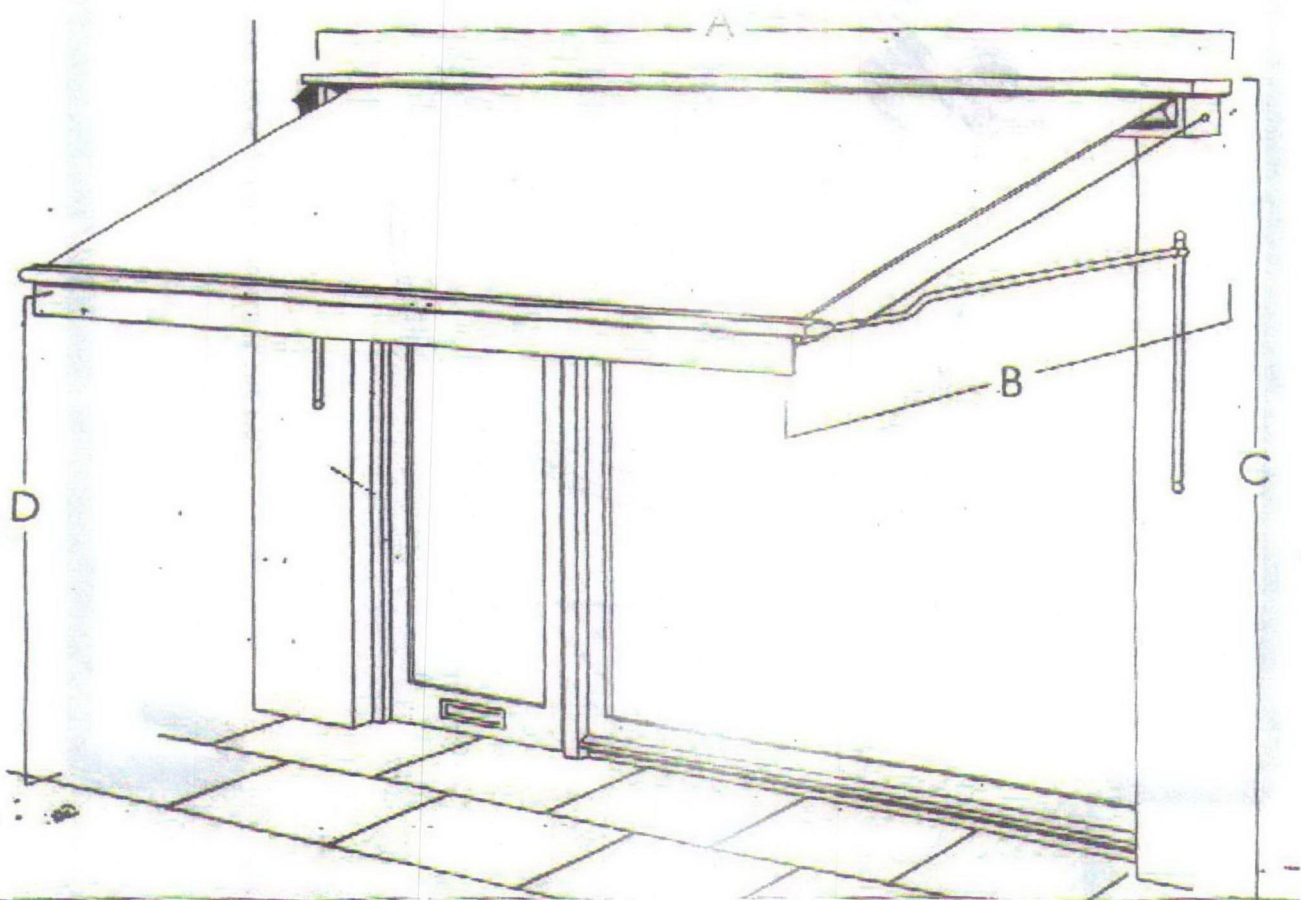


- A) WIDTH of BLIND BOX..... 3940  
B) PROJECTION from WALL to FRONT WALL..... 1200 mm  
C) TOP of BOX..... 3300 mm  
D) HEADWAY..... 2100 mm



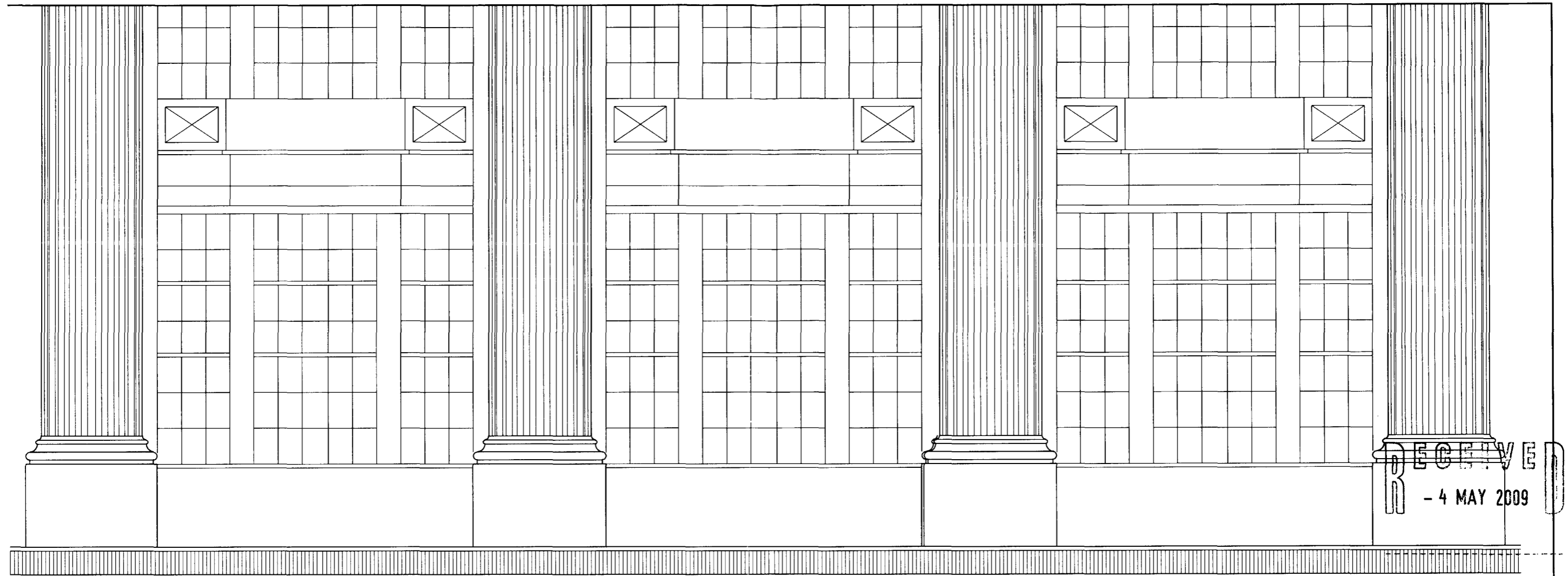
**SPECIFICATION FOR TRADITIONAL BLINDS**

Box constructed from 14 gauge aluminium, etched, primed and finished in the colour of your choice. End checks to be 2" thick hardwood front lath from best quality selected softwood.

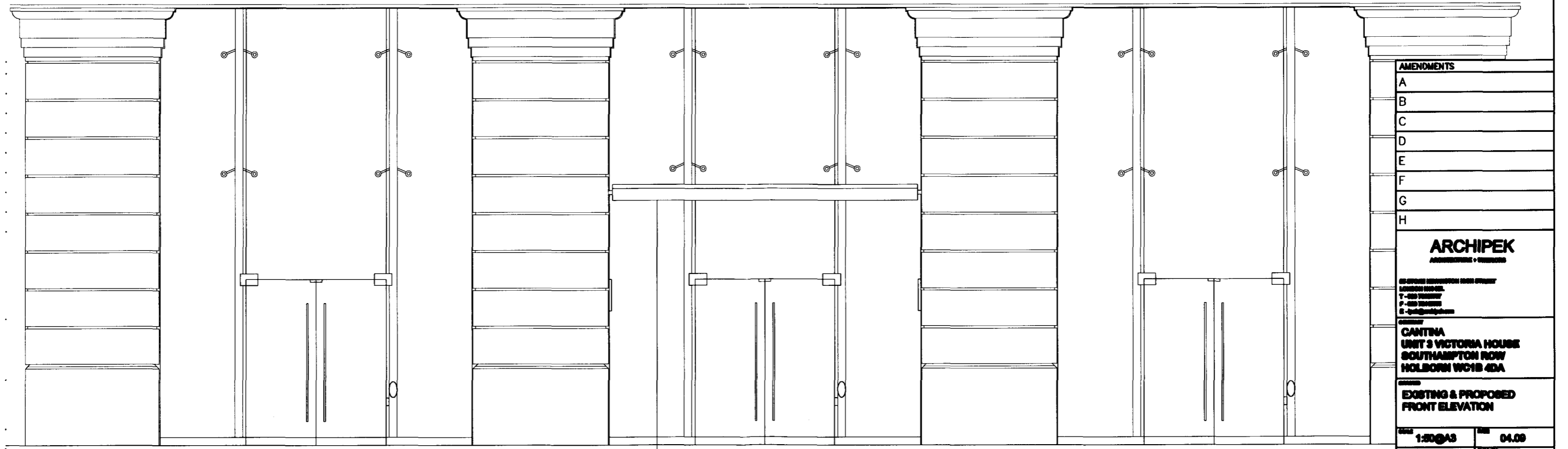
Cover securely handsewn to English galvanised steel roller housing spiral spring wound on the 5/8" diameter steel rod. Complete with 7/8" round mild steel arms with slide bars if necessary.

Safety chains and pole for operating are provided.

RECEIVED  
- 4 MAY 2009



RECEIVED  
- 4 MAY 2009



FABRIC CANOPY

FRONT ELEVATION

AMENDMENTS	
A	
B	
C	
D	
E	
F	
G	
H	

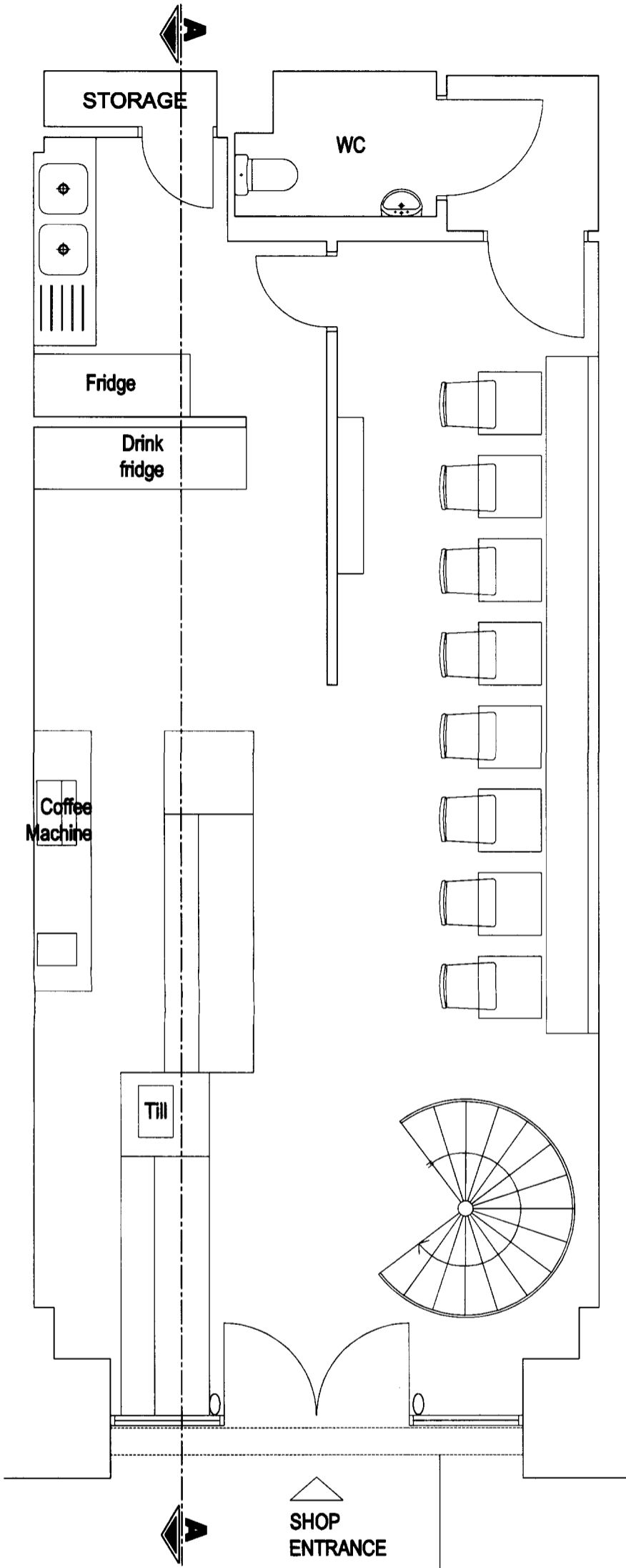
**ARCHIPEK**  
ARCHITECTURE + INTERIORS  
100 GREAT RUSSELL STREET  
LONDON WC1B 4JL  
T: +44 (0)20 7325 4300  
F: +44 (0)20 7325 4301  
E: info@archipek.com

**CANTINA**  
UNIT 3 VICTORIA HOUSE  
SOUTHAMPTON ROW  
HOLBORN WC1B 4DA

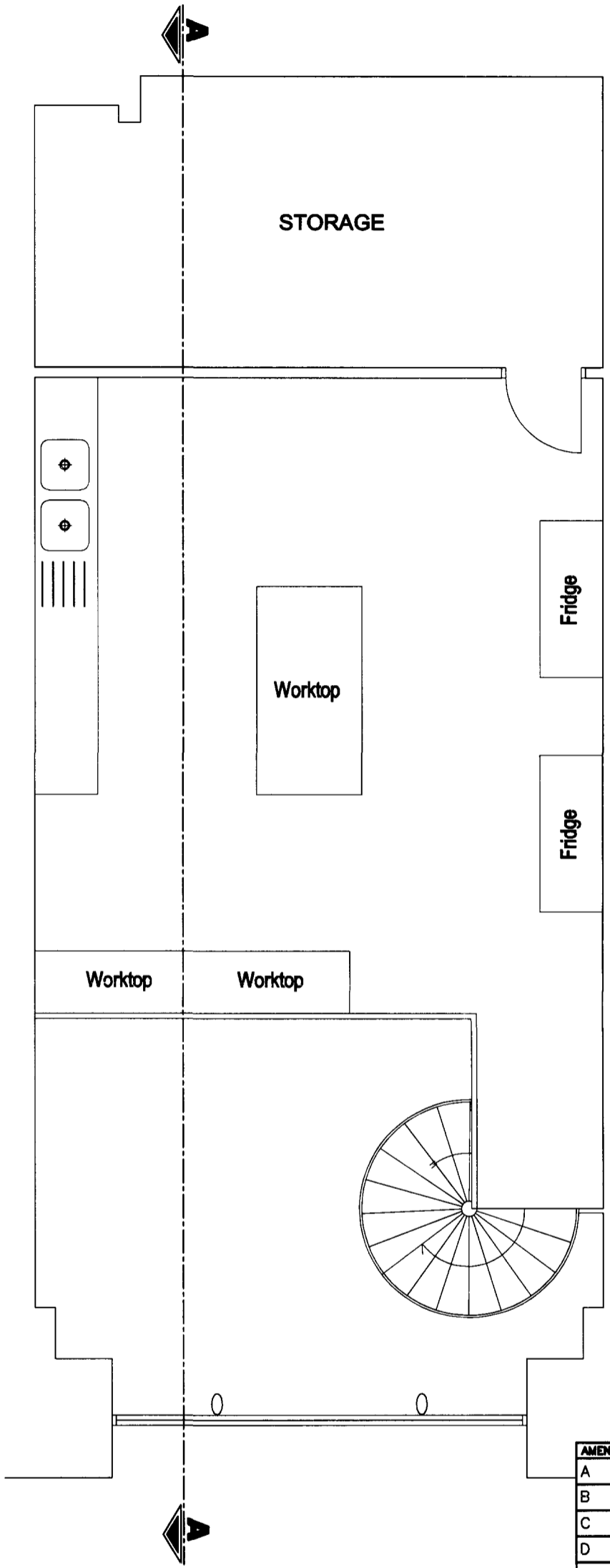
EXISTING & PROPOSED  
FRONT ELEVATION

DATE	1:30/03	REV	04.09
BY	MS	CHECKED BY	CI

0941a | S | 3



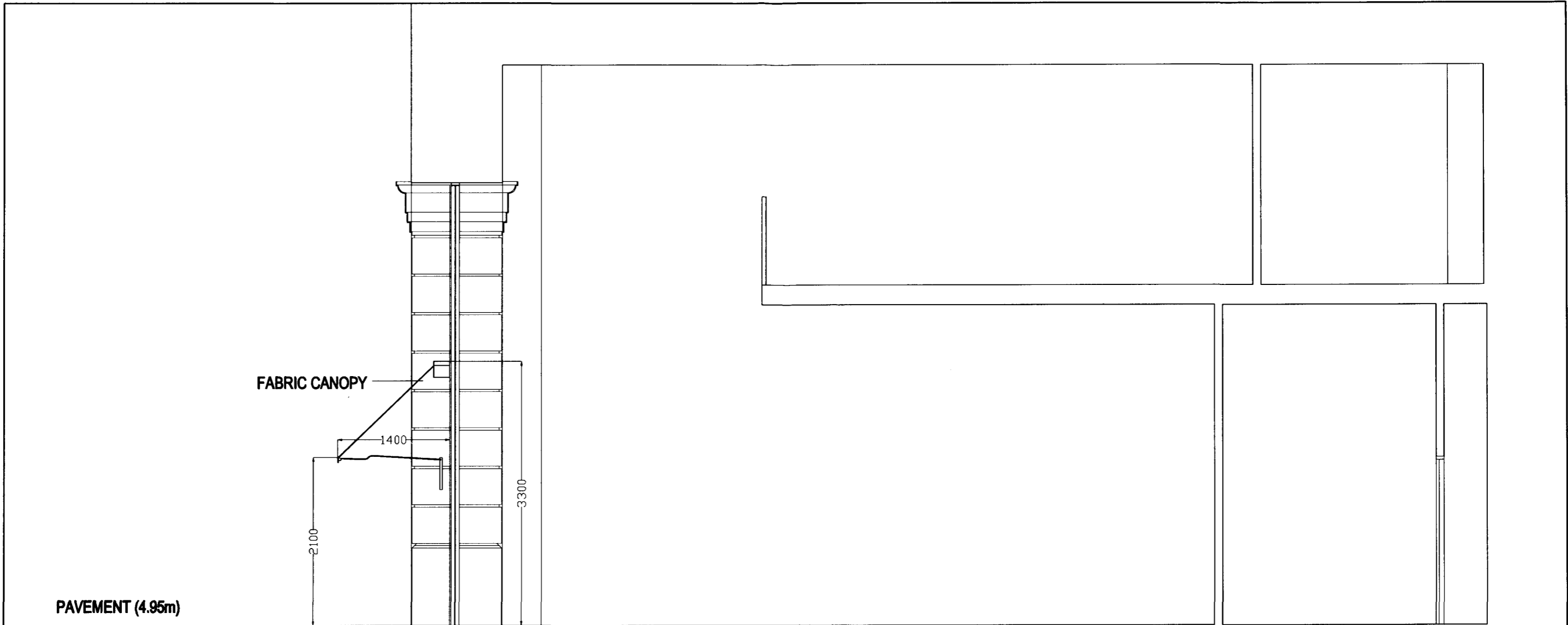
GROUND FLOOR PLAN



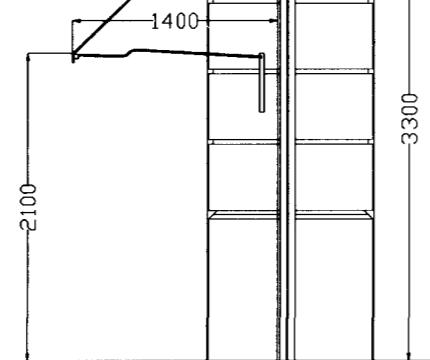
FIRST FLOOR PLAN

AMENDMENTS	
A	
B	
C	
D	
E	
F	
G	
H	
<b>ARCHIPEK</b> ARCHITECTS + INTERIORS	
<small>100 GERRARD STREET WEST, SUITE 200, TORONTO, ONT. M5H 2C4          T: 416 593 9277          F: 416 593 9278          E: info@archipek.com</small>	
<b>PROJECT</b> CANTINA UNIT 3 VICTORIA HOUSE SOUTHAMPTON ROW HOLBORN WC1B 4DA	
<b>SCOPE</b> EXISTING & PROPOSED FLOOR PLANS	
SCALE	DATE
1:50 @ A3	04.09
REVISION	STATUS
MS	CI
<b>0941a   S   1</b>	

**RECEIVED**  
 - 4 MAY 2009



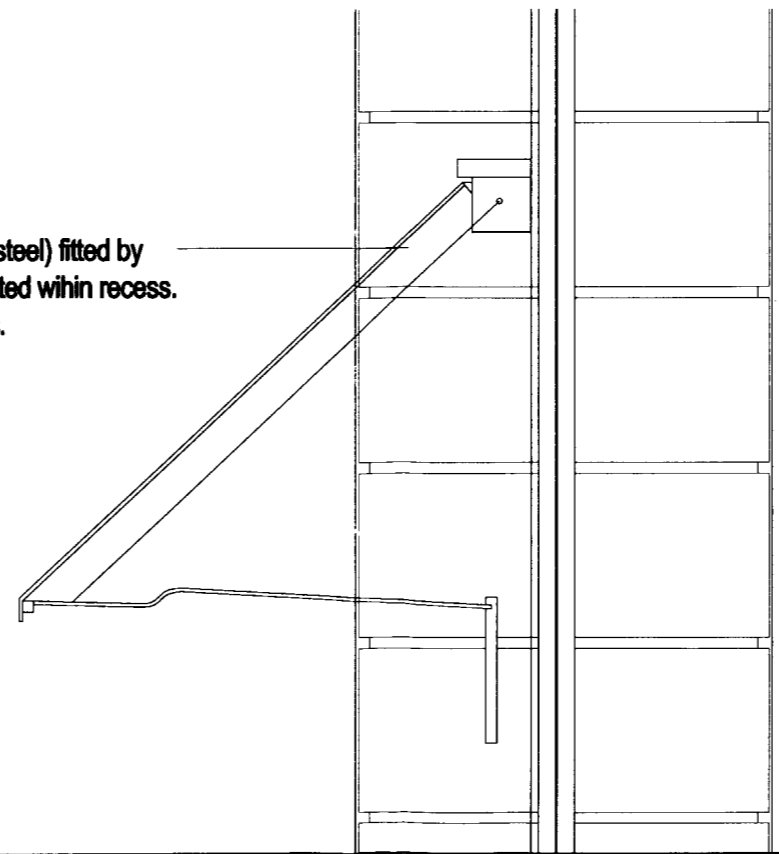
FABRIC CANOPY



PAVEMENT (4.95m)

A-A SECTION

FABRIC CANOPY  
 Box and side plates for arms (plated mild steel) fitted by  
 plated coach screws. Box and arms are fitted within recess.  
 Cover and front valance in a woven acrylic.



RECEIVED  
 - 4 MAY 2009

CANOPY SECTION  
 SCALE: 1/20

AMENDMENTS	
A	
B	
C	
D	
E	
F	
G	
H	
<b>ARCHIPEK</b> ARCHITECTS • INTERIORS	
<small>15 GERRARD STREET EAST TORONTO        T-416 593-9337        F-416 593-9338        E-arch@archipek.com</small>	
<b>CANTINA</b> UNIT 3 VICTORIA HOUSE SOUTHAMPTON ROW HOLBORN WC1B 4DA	
EXISTING & PROPOSED A-A SECTION	
DATE: 1.20.08	REV: 04.09
DRAWN: MS	CHECKED: CI
<b>0941a   S   2</b>	