

BLOCK 1
FIRST FLOOR EXISTING LAYOUT
 Scale 1:50 (A3)



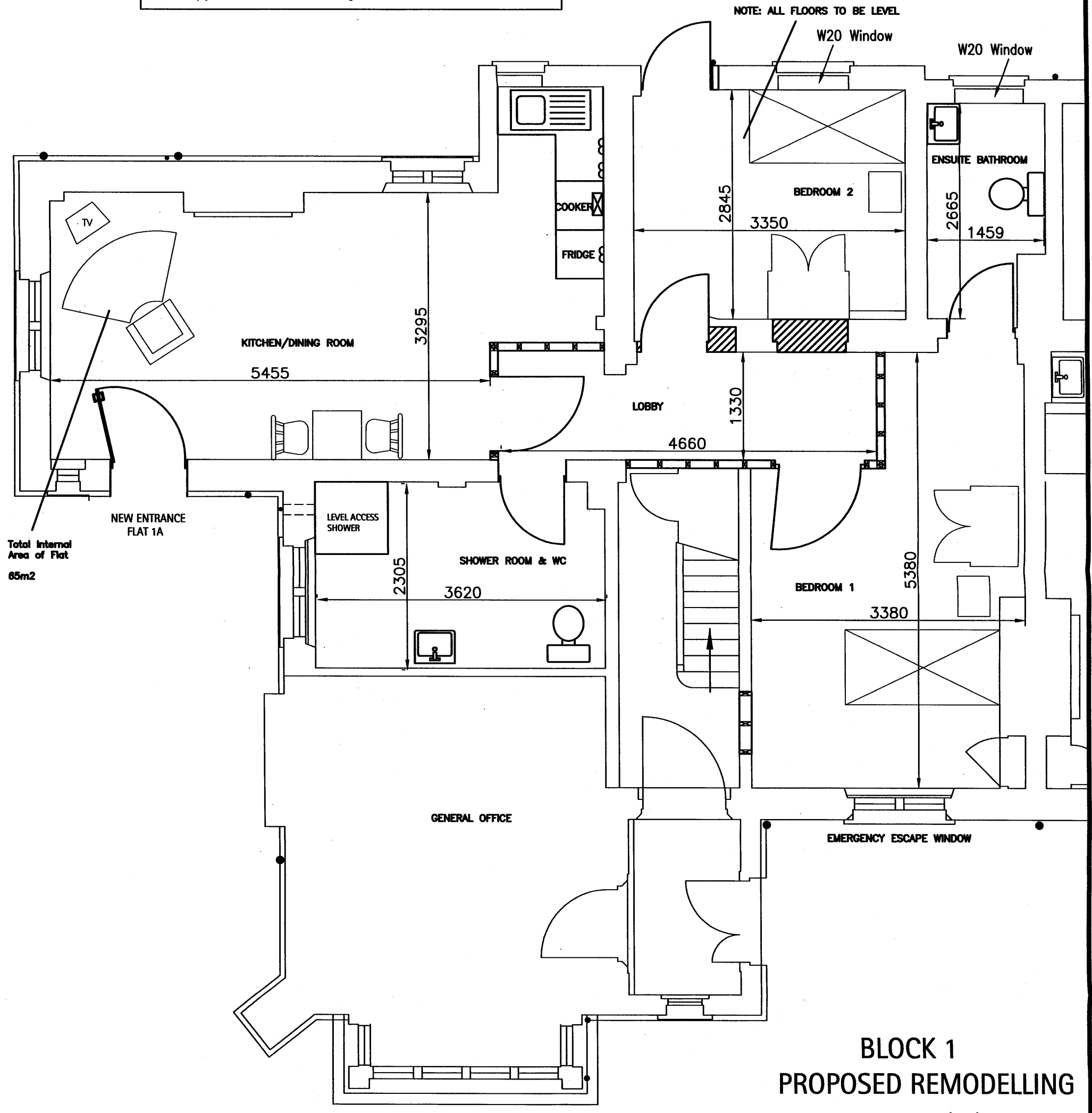
CONSTRUCTION CONSULTANTS

1 Athenaeum Road
 Whetstone
 London N20 8AA

t. 020 8445 7721
 f. 020 8446 2199
 e. office@halsteads.co.uk
 w. www.halsteads.co.uk

Project:	St. Pancras Almshouses	Drawn by:	RCB	Scale:	1:50
Title:	BLOCK 1 - FIRST FLOOR EXISTING LAYOUT	Checked by:		Drawing No:	13842/13
Client:		Date:	SEPT 2008		7/T1
Architect:					

- NOTES**
1. 1hr fire resistance to stud partitions between compartments
 2. Front doors to flats to have 1hr fire resistance and be self closing
 3. Internal doors to flats to have 20mins fire resistance and be self closing
 4. Communal staircases to have plasterboard fixed to both sides for 1hr fire resistance
 5. Studwork partitions to bathrooms to be Part E compliant for sound insulation
 6. Waste pipes to have 1:40 fall to existing double sealed manholes



Total Internal Area of Flat 65m²

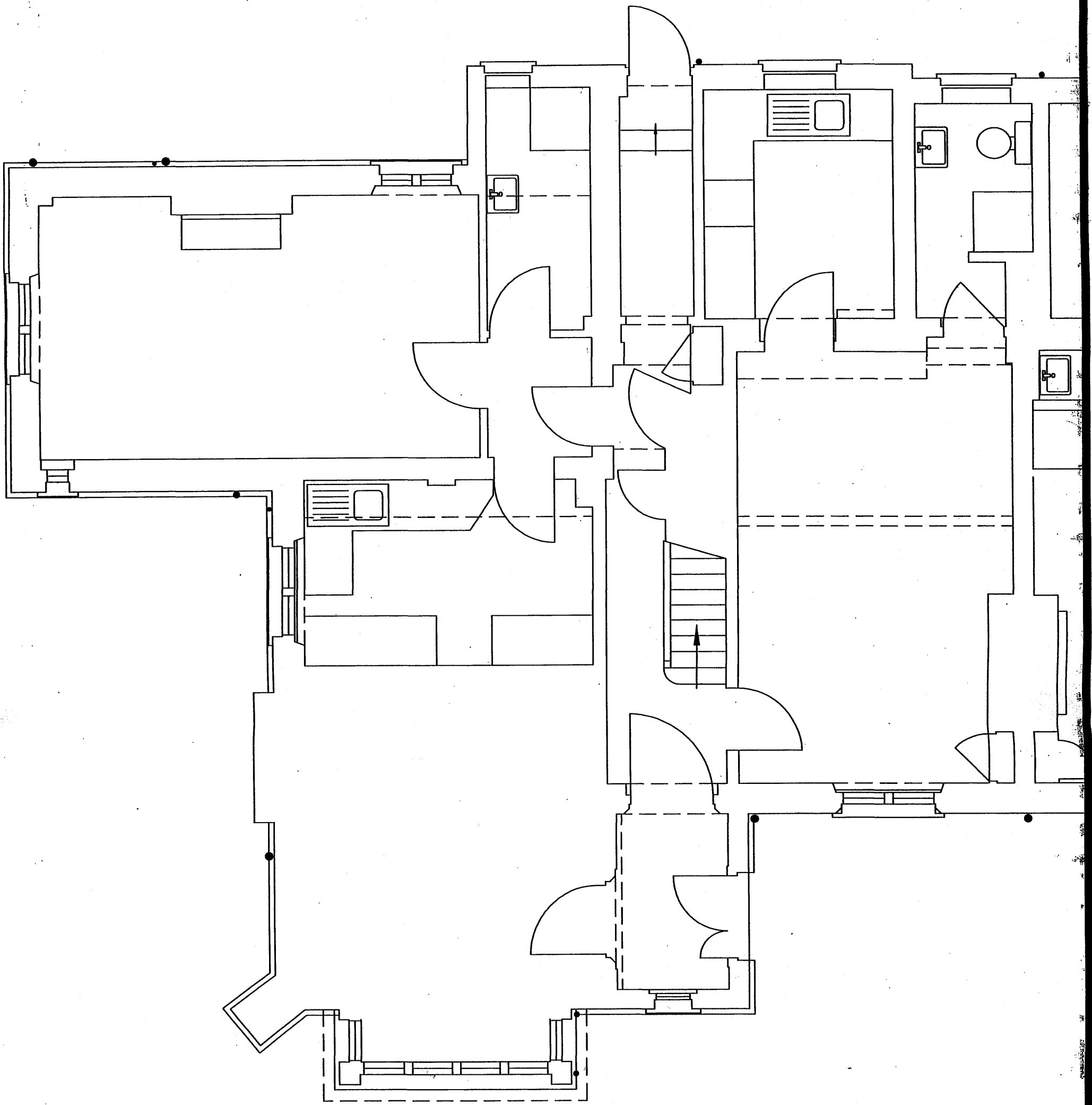
**BLOCK 1
PROPOSED REMODELLING**
Scale 1:50 (A3)

halstead ASSOCIATES CONSTRUCTION CONSULTANTS

1 Athenaeum Road
Whetstone
London N20 9AA

t. 020 8445 7721
f. 020 8446 2199
e. office@halsteads.co.uk
w. www.halsteads.co.uk

Project:	St. Pancras Almshouses	Drawn by:	RCB	Scale:	1:50
Title:	BLOCK 1 - GROUND FLOOR PROPOSED REMODELLING	Checked by:		Drawing No:	13842/12
Client:		Date:	SEPT 2008		T1
Architect:					



BLOCK 1
GROUND FLOOR EXISTING LAYOUT
 Scale 1:50 (A3)

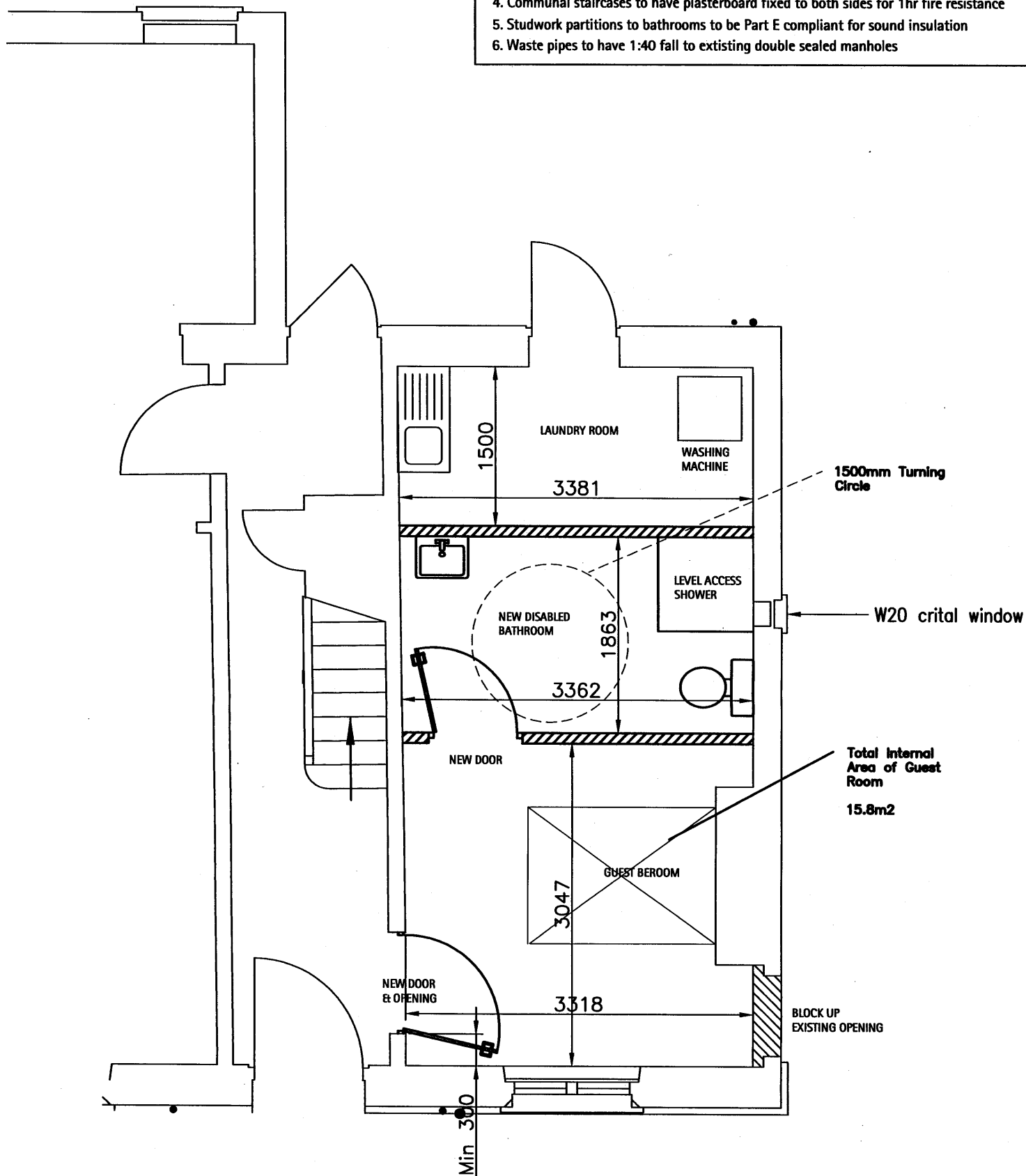
halstead ASSOCIATES CONSTRUCTION CONSULTANTS

1 Athenaeum Road
 Whetstone
 London N20 9AA

t. 020 8445 7721
 f. 020 8446 2199
 e. office@halsteads.co.uk
 w. www.halsteads.co.uk

Project:	St. Pancras Almshouses	Drawn by:	RCB	Scale:	1:50
Title:	BLOCK 1 - GROUND FLOOR EXISTING LAYOUT	Checked by:		Drawing No:	13842/11
Client:		Date:	SEPT 2008	T	
Architect:					

- NOTES**
1. 1hr fire resistance to stud partitions between compartments
 2. Front doors to flats to have 1hr fire resistance and be self closing
 3. Internal doors to flats to have 20mins fire resistance and be self closing
 4. Communal staircases to have plasterboard fixed to both sides for 1hr fire resistance
 5. Studwork partitions to bathrooms to be Part E compliant for sound insulation
 6. Waste pipes to have 1:40 fall to existing double sealed manholes



**GUEST / LAUNDRY ROOM BLOCK 8 FLAT B
PROPOSED REMODELLING
Scale 1:50 (A3)**

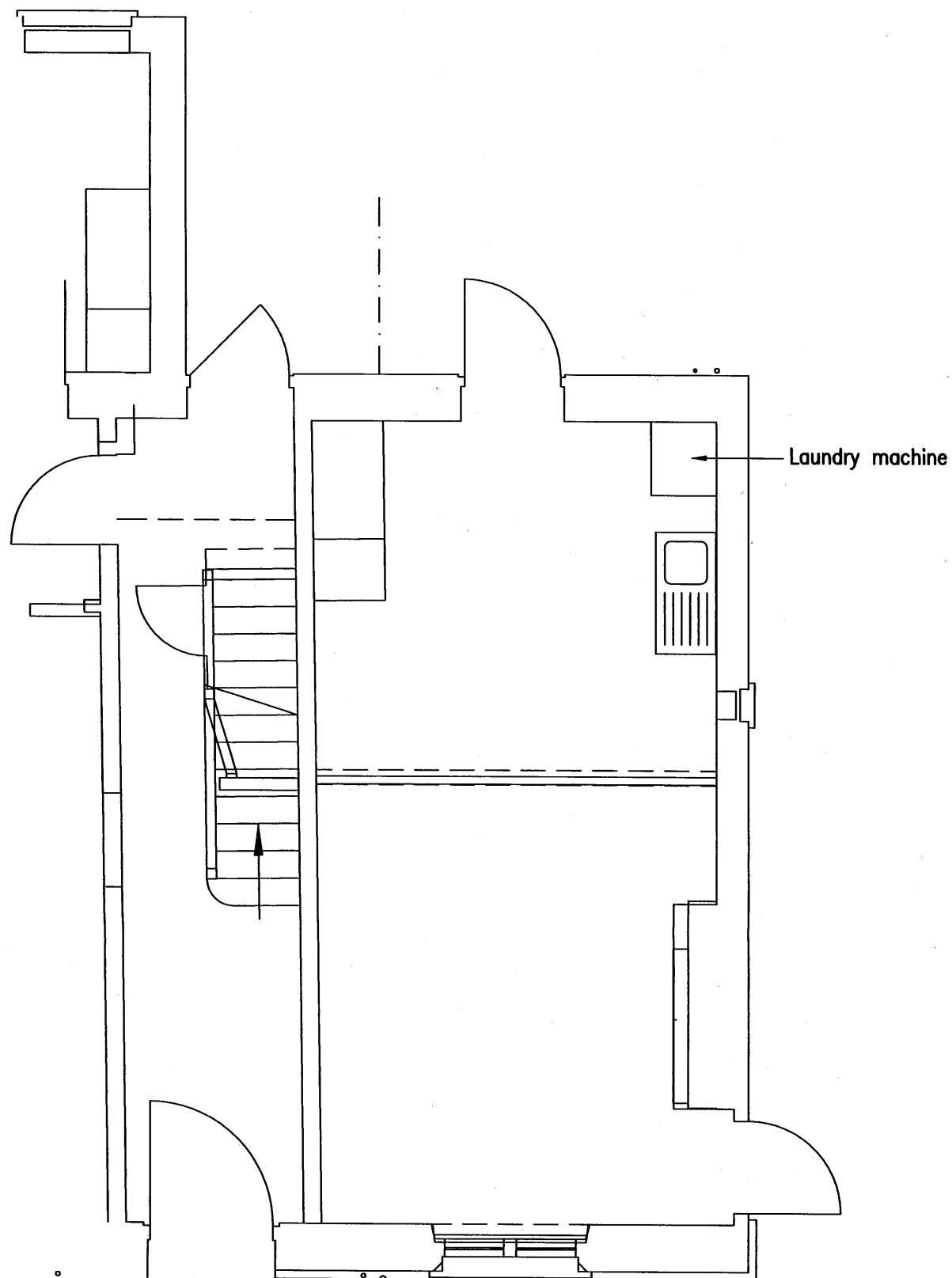


CONSTRUCTION CONSULTANTS

1 Athenaeum Road
Whetstone
London N20 9AA

t. 020 8445 7721
f. 020 8446 2199
e. office@halsteads.co.uk
w. www.halsteads.co.uk

Project:	St. Pancras Almshouses	Drawn by:	RCB	Scale:	1:50
Title:	GUEST / LAUNDRY ROOM BLOCK 8 FLAT B - PROPOSED REMODELLING	Checked by:		Drawing No:	13842/10
Client:		Date:	JULY 2008		7/T1
Architect:					



GUEST / LAUNDRY ROOM
 EXISTING LAYOUT
 Scale 1:50 (A3)

halstead ASSOCIATES CONSTRUCTION CONSULTANTS

1 Athenaeum Road
 Whetstone
 London N20 9AA

t. 020 8445 7721
 f. 020 8446 2199
 e. office@halsteads.co.uk
 w. www.halsteads.co.uk

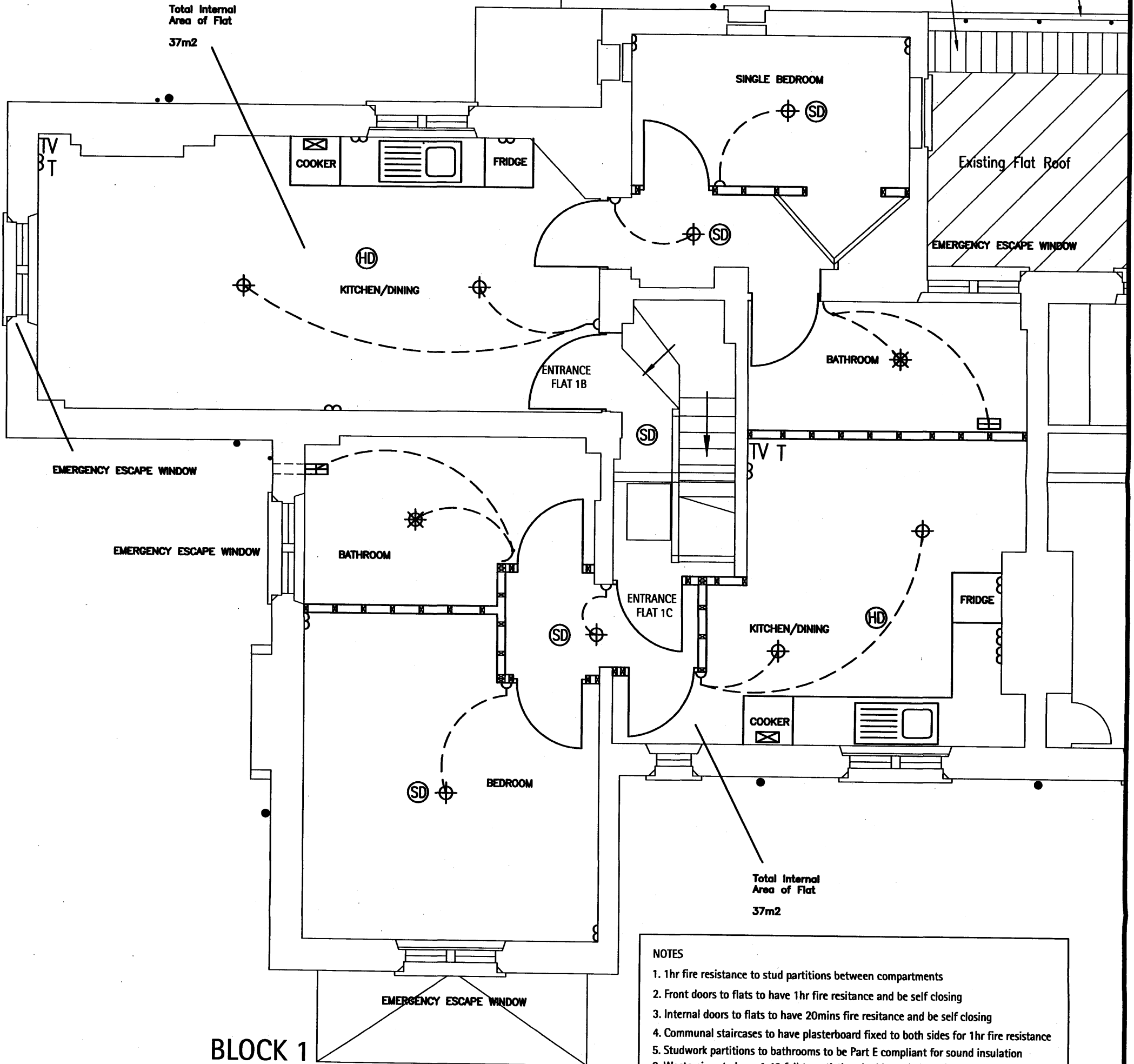
Project:	St. Pancras Almshouses	Drawn by:	RCB	Scale:	1:50
Title:	GUEST / LAUNDRY ROOM - EXISTING LAYOUT	Checked by:		Drawing No:	13842/09
Client:		Date:	JULY 2008		7/T1
Architect:					

☒	Manual Extractor	C	Cooker Point	⌋	Pull Cord Light
T	Telephone	▨	Storage Heater	⌋	Pull Cord Panic Alarm
TV	Ariel Point	⊕	Pendant Light	S	Shower Point
}	Double Socket	■	Electric Heater	⊞	Automatic Extractor With 15min Over Run
⌋	Single Light Switch	⊙	Heat Detector	⊛	Steamproof Light Fitting
⌋	Double Light Switch	⊙	Smoke Detector		

Proposed railings see photos

Proposed walkway see photos

Total Internal Area of Flat
37m²



Total Internal Area of Flat
37m²

NOTES

- 1hr fire resistance to stud partitions between compartments
- Front doors to flats to have 1hr fire resistance and be self closing
- Internal doors to flats to have 20mins fire resistance and be self closing
- Communal staircases to have plasterboard fixed to both sides for 1hr fire resistance
- Studwork partitions to bathrooms to be Part E compliant for sound insulation
- Waste pipes to have 1:40 fall to existing double sealed manholes

BLOCK 1
FIRST FLOOR ELECTRICAL POSITIONS
Scale 1:50 (A3)



CONSTRUCTION CONSULTANTS

1 Athenaeum Road
Whetstone
London N20 9AA

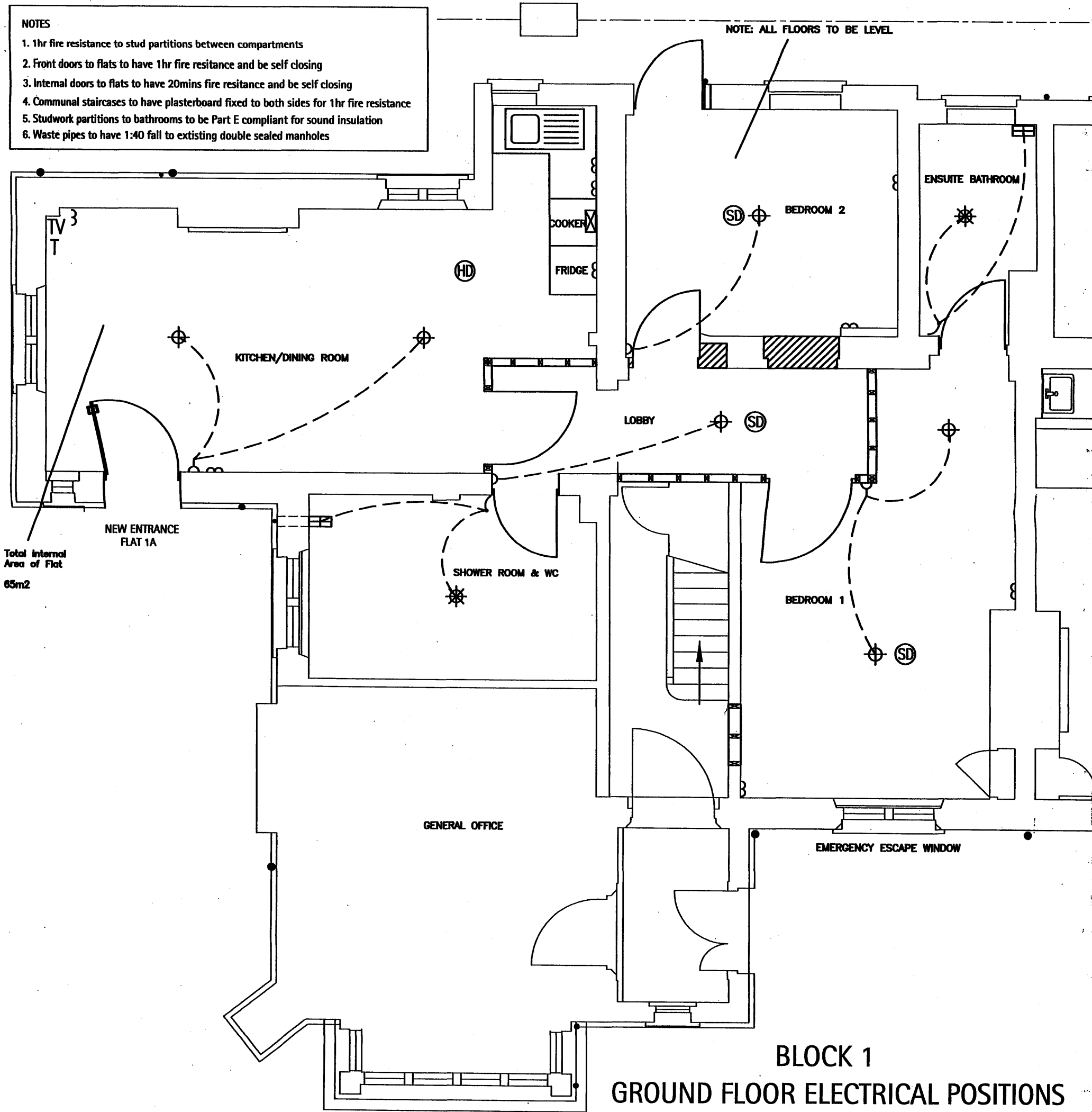
t. 020 8445 7721
f. 020 8446 2199
e. office@halsteads.co.uk
w. www.halsteads.co.uk

Project:	St. Pancras Almshouses	Drawn by:	RCB	Scale:	1:50
Title:	BLOCK 1 - FIRST FLOOR ELECTRICAL LAYOUT	Checked by:		Drawing No:	13842/114
Client:		Date:	JULY 2008		T1
Architect:					

☒	Manual Extractor	C	Cooker Point	⌋	Pull Cord Light
T	Telephone	▨	Storage Heater	⌋	Pull Cord Panic Alarm
TV	Ariel Point	⊕	Pendant Light	S	Shower Point
3	Double Socket	■	Electric Heater	☒	Automatic Extractor With 15min Over Run
⌋	Single Light Switch	⊕	Heat Detector	☼	Steamproof Light Fitting
⌋	Double Light Switch	⊕	Smoke Detector		

- NOTES**
- 1hr fire resistance to stud partitions between compartments
 - Front doors to flats to have 1hr fire resistance and be self closing
 - Internal doors to flats to have 20mins fire resistance and be self closing
 - Communal staircases to have plasterboard fixed to both sides for 1hr fire resistance
 - Studwork partitions to bathrooms to be Part E compliant for sound insulation
 - Waste pipes to have 1:40 fall to existing double sealed manholes

NOTE: ALL FLOORS TO BE LEVEL



Total Internal Area of Flat
65m²

BLOCK 1
GROUND FLOOR ELECTRICAL POSITIONS
Scale 1:50 (A3)



CONSTRUCTION CONSULTANTS

1 Athenaeum Road
Whetstone
London N20 9AA

t. 020 8445 7721
f. 020 8446 2199
e. office@halsteads.co.uk
w. www.halsteads.co.uk

Project: **St. Pancras Almshouses**

Drawn by: **RCB**

Scale: **1:50**

Title: **BLOCK 1 - GROUND FLOOR ELECTRICAL LAYOUT**

Checked by:

Drawing No:
13842/112

Client:
Architect:

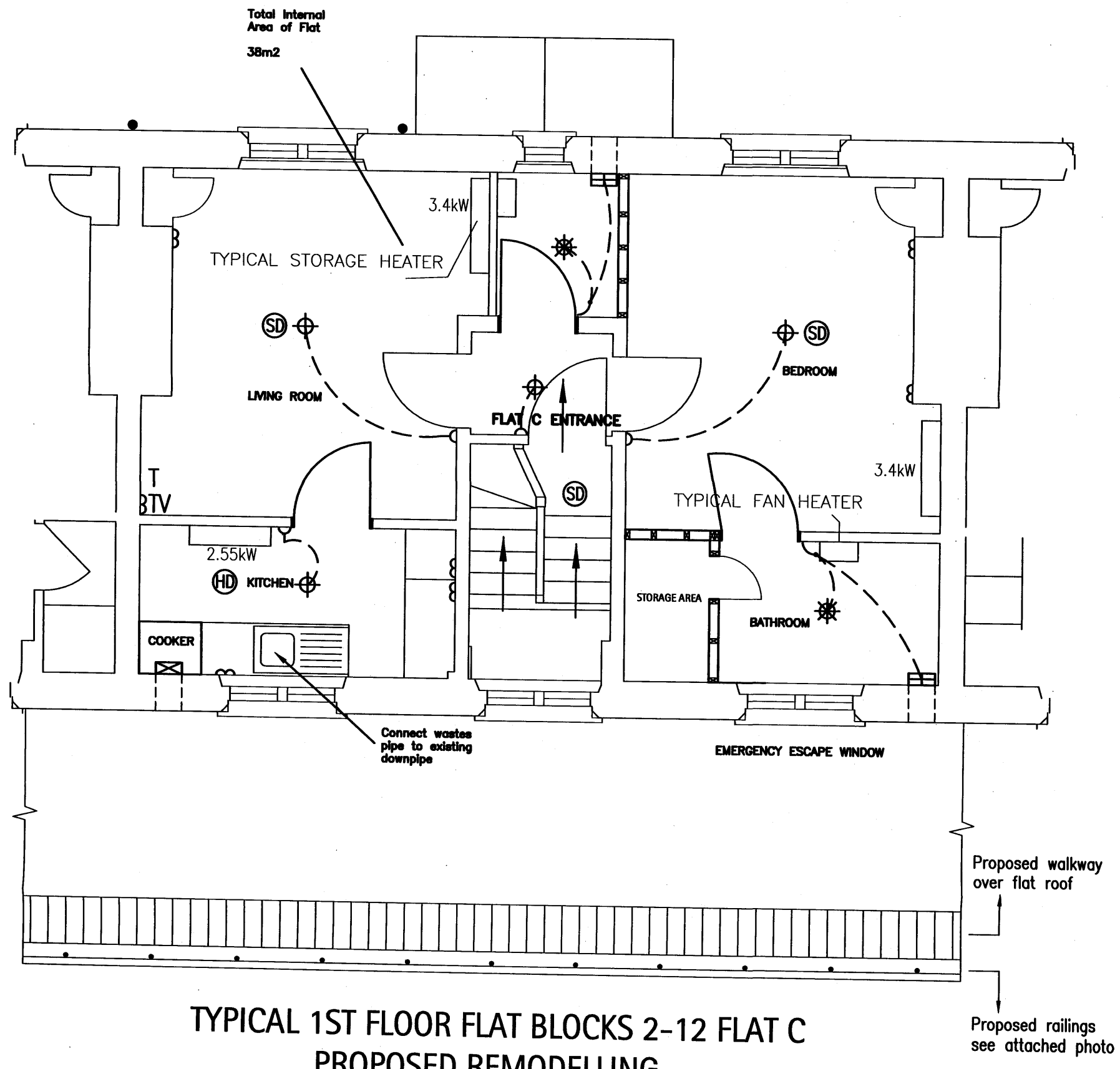
Date:
SEPT 2008

T

NOTES

1. 1hr fire resistance to stud partitions between compartments
2. Front doors to flats to have 1hr fire resistance and be self closing
3. Internal doors to flats to have 20mins fire resistance and be self closing
4. Communal staircases to have plasterboard fixed to both sides for 1hr fire resistance
5. Studwork partitions to bathrooms to be Part E compliant for sound insulation
6. Waste pipes to have 1:40 fall to existing double sealed manholes

☒	Manual Extractor	C	Cooker Point	⌋	Pull Cord Light
T	Telephone	▨	Storage Heater	⌋	Pull Cord Panic Alarm
TV	Ariel Point	⊕	Pendant Light	S	Shower Point
}	Double Socket	■	Electric Heater	☒	Automatic Extractor With 15min Over Run
⌋	Single Light Switch	⊕	Heat Detector	☒	Steamproof Light Fitting
⌋	Double Light Switch	⊕	Smoke Detector		

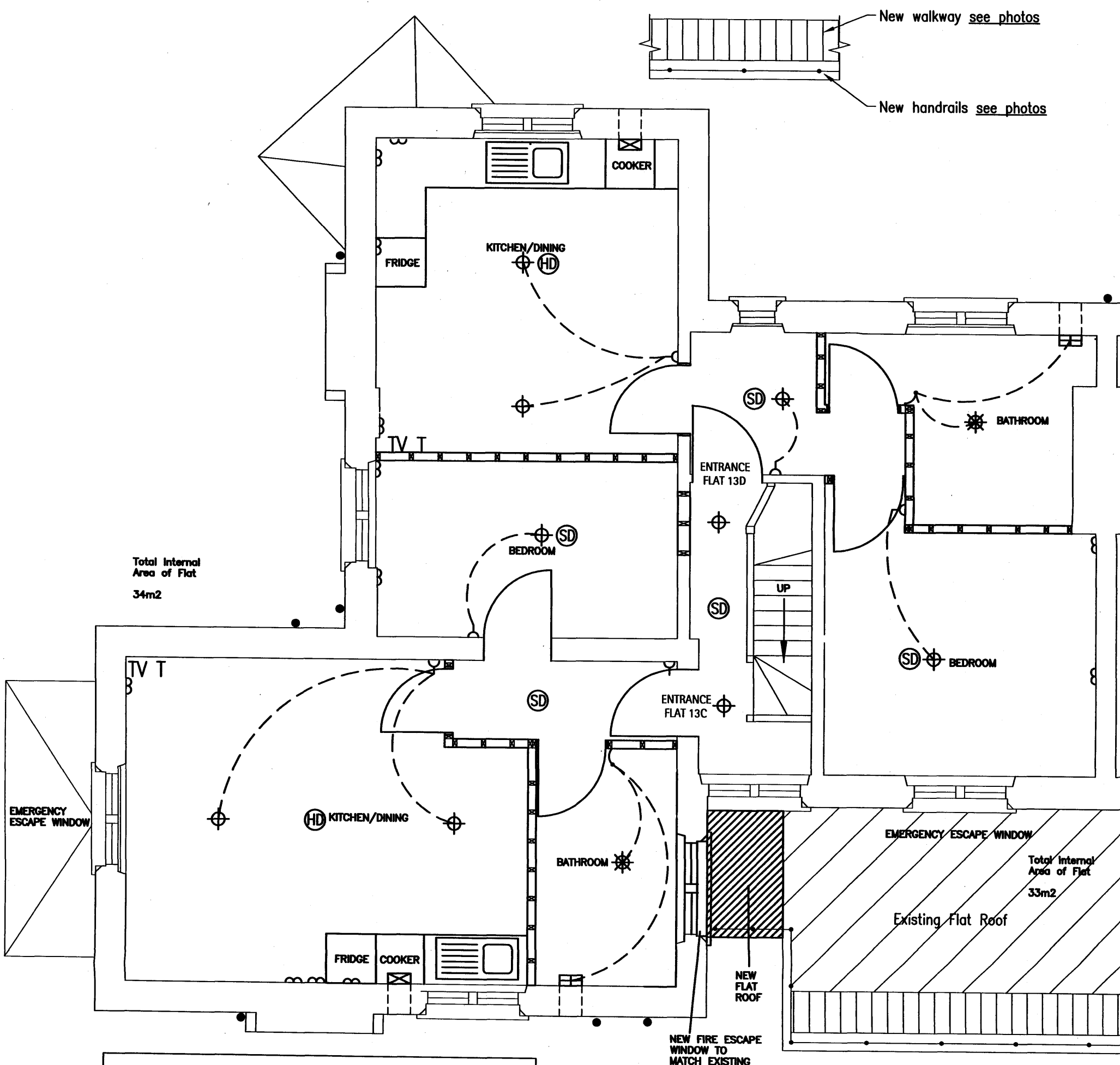


**TYPICAL 1ST FLOOR FLAT BLOCKS 2-12 FLAT C
PROPOSED REMODELLING**
Scale 1:50 (A3)

halstead ASSOCIATES CONSTRUCTION CONSULTANTS
 1 Athenaeum Road
 Whetstone
 London N20 9AA
 t. 020 8445 7721
 f. 020 8446 2199
 e. office@halsteads.co.uk
 w. www.halsteads.co.uk

Project:	St. Pancras Almshouses	Drawn by:	RCB	Scale:	1:50
Title:	TYPICAL FIRST FLOOR FLATS BLOCKS 2-12 ELECTRICAL LAYOUT	Checked by:		Drawing No:	13842/108
Client:		Date:	JULY 2008		
Architect:					

☒	Manual Extractor	C	Cooker Point	⌋	Pull Cord Light
T	Telephone	▨	Storage Heater	⌋	Pull Cord Panic Alarm
TV	Ariel Point	⊕	Pendant Light	S	Shower Point
3	Double Socket	■	Electric Heater	☒	Automatic Extractor With 15min Over Run
⌋	Single Light Switch	⊕	Heat Detector	☼	Steamproof Light Fitting
⌋	Double Light Switch	⊕	Smoke Detector		



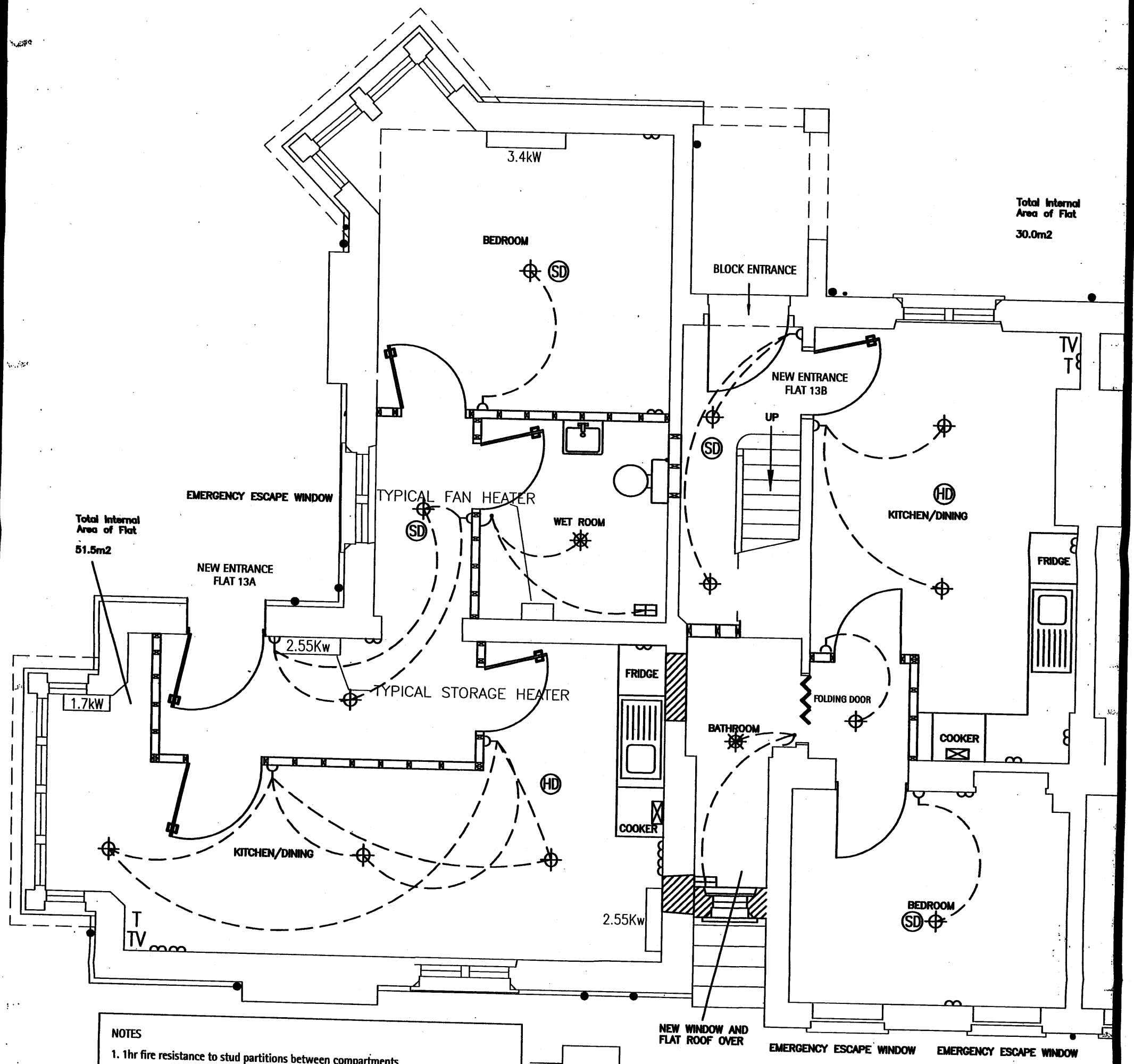
- NOTES**
- 1hr fire resistance to stud partitions between compartments
 - Front doors to flats to have 1hr fire resistance and be self closing
 - Internal doors to flats to have 20mins fire resistance and be self closing
 - Communal staircases to have plasterboard fixed to both sides for 1hr fire resistance
 - Studwork partitions to bathrooms to be Part E compliant for sound insulation
 - Waste pipes to have 1:40 fall to existing double sealed manholes

BLOCK 13
FIRST FLOOR ELECTRICAL POSITIONS
 Scale 1:50 (A3)

halstead ASSOCIATES CONSTRUCTION CONSULTANTS
 1 Athenaeum Road
 Whetstone
 London N20 9AA
 t. 020 8445 7721
 f. 020 8446 2199
 e. office@halsteads.co.uk
 w. www.halsteads.co.uk

Project:	St. Pancras Almshouses	Drawn by:	RCB	Scale:	1:50
Title:	BLOCK 13 - 1ST FLOOR ELECTRICAL LAYOUT	Checked by:		Drawing No:	13842/106
Client:		Date:			
Architect:					

⊠	Manual Extractor	C	Cooker Point	⌋	Pull Cord Light
T	Telephone	▨	Storage Heater	⌋	Pull Cord Panic Alarm
TV	Ariel Point	⊕	Pendant Light	S	Shower Point
⌋	Double Socket	■	Electric Heater	⊠	Automatic Extractor With 15min Over Run
⌋	Single Light Switch	⊕	Heat Detector	⊗	Steamproof Light Fitting
⌋	Double Light Switch	⊕	Smoke Detector		



- NOTES**
- 1hr fire resistance to stud partitions between compartments
 - Front doors to flats to have 1hr fire resistance and be self closing
 - Internal doors to flats to have 20mins fire resistance and be self closing
 - Communal staircases to have plasterboard fixed to both sides for 1hr fire resistance
 - Studwork partitions to bathrooms to be Part E compliant for sound insulation
 - Waste pipes to have 1:40 fall to existing double sealed manholes

BLOCK 13
GROUND FLOOR PROPOSED ELECTRICAL POSITION
 Scale 1:50 (A3)

halstead ASSOCIATES CONSTRUCTION CONSULTANTS
 1 Athenaeum Road
 Whetstone
 London N20 9AA
 t. 020 8445 7721
 f. 020 8446 2199
 e. office@halsteads.co.uk
 w. www.halsteads.co.uk

Project:	St. Pancras Almshouses	Drawn by:	RCB	Scale:	1:50
Title:	BLOCK 13 - GROUND FLOOR ELECTRICAL LAYOUT	Checked by:		Drawing No:	13842/104
Client:		Date:	JULY 2008	T	
Architect:					