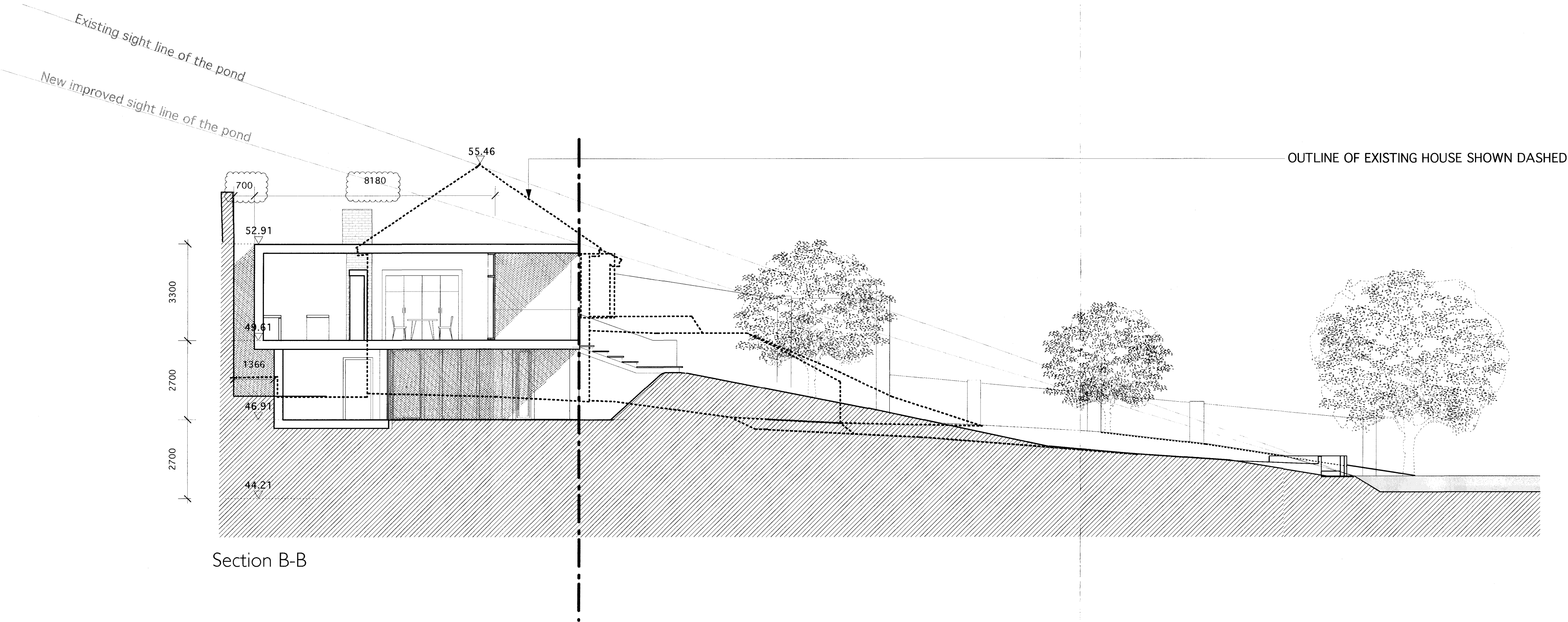
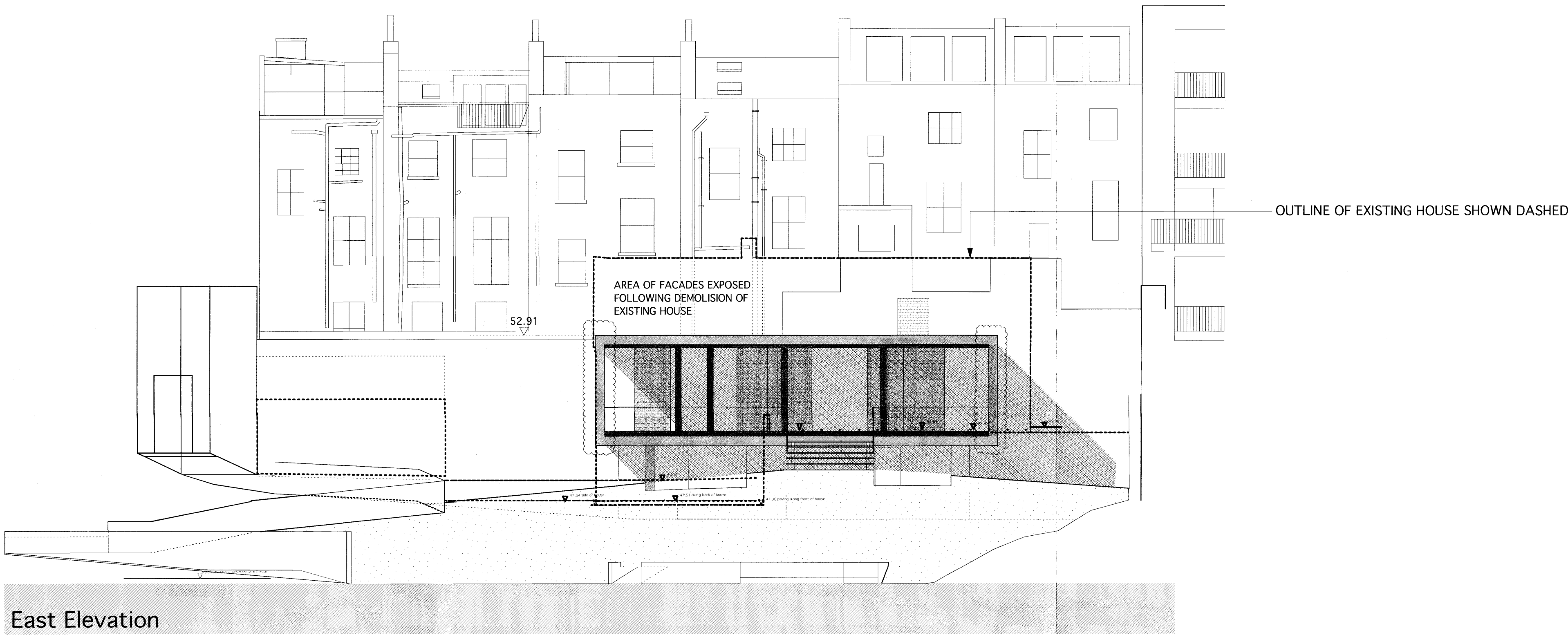


COMPARATIVE STUDIES PAGE 2



COMPARATIVE AREAS AND VOLUME

Proposed Areas:

Ground Floor: 92 m2/

First floor: 106 m2/

Total 198 m2

Comparative Areas:

Existing 1 1/2 storey house + shed:
Total: 180 m2

Proposal for 2 storey 4 bedroom house:
Total : 198m2 (gr floor 92 m2, 1st floor 106 m2)

Equal to 10 % increase in area (m2)

Comparative Volumes Of Built Forms above
ground Level:

Existing 1 1/2 storey house:
Total: 638 m3

Proposal for 2 storey 4 bedroom house:
Total : 602 m3

Equal to 6% reduction in volume (m3)

REVISIONS:

A 29.05.09: width of house reduced, area of house reduced, width of stair from terrace to garden reduced, number of steps reduced and risers opened, bund raised to meet stair. Ash, Mulberry, Elder, Berberry, Willow tree and magnolia tree retained. See Proposed Inadscape drawing P/108/A

B 22.06.09:
House brought back in line with 8 ft covenant line

PROJECT:
THE GARDEN HOUSE

STATUS:
PLANNING

DRAWING TITLE:
EAST ELEVATION AND
LONG SECTIONS

NOTE:
Do not scale from the drawing. Any discrepancies to be reported to the architect.
All dimensions will be taken on site prior to ordering and construction.
Copyright remains with the architect.
This drawing is to be read in conjunction with the specification and all other relevant drawings.

JAMES GORST
ARCHITECTS Ltd

The House of Detention
Clerkenwell Close
London EC1R 0AS

t 020 7336 7140
f 020 7336 7150
e info@jamesgorstarchitects.com

DRAWING SCALE:

1:100 @A1
1:200 @A3

DRAWING NUMBER:

P/107

REVISION:

B

