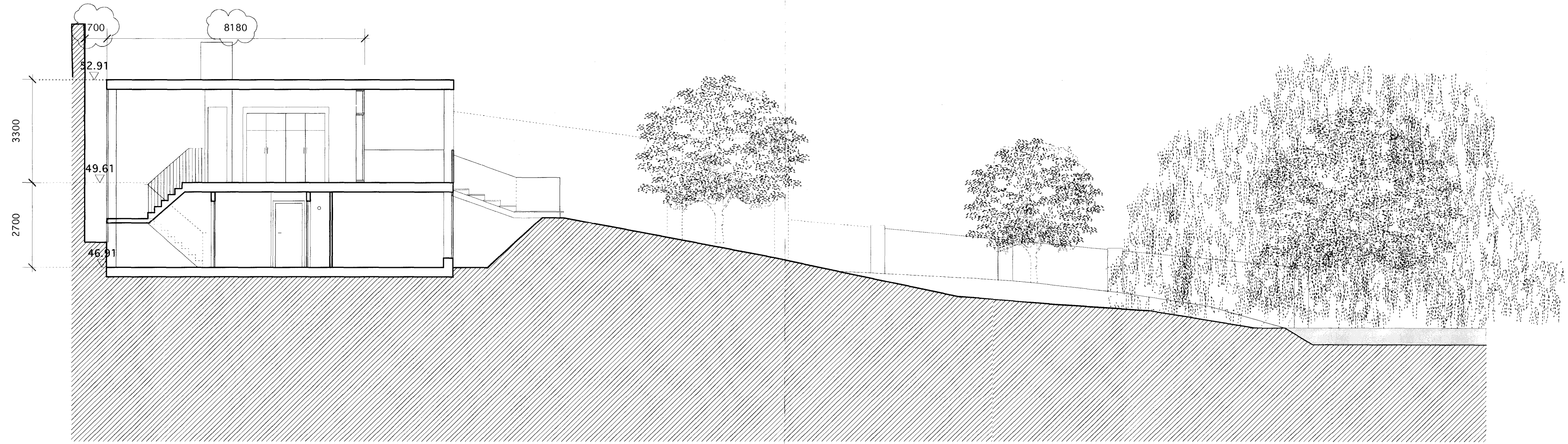


Section C-C



Section A-A

REVISIONS:

A 29.05.09: width of house reduced, area of house reduced, width of stair from terrace to garden reduced, number of steps reduced and risers opened, bund raised to meet stair. Ash, Mulberry, Elder, Berberry, Willow tree and magnolia tree retained. See Proposed Inadscape drawing P/108/A

B 22.06.09: House brought back in line with 8 ft covenant line

PROJECT:  
THE GARDEN HOUSE

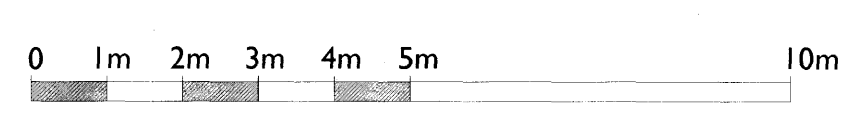
STATUS:  
PLANNING

DRAWING TITLE:  
SECTION A-A AND C-C

NOTE:  
Do not scale from the drawing. Any discrepancies to be reported to the architect.  
All dimensions will be taken on site prior to ordering and construction.  
Copyright remains with the architect.  
This drawing is to be read in conjunction with the specification and all other relevant drawings.

JAMES GORST  
ARCHITECTS Ltd

The House of Detention  
Clerkenwell Close  
London EC1R 0AS  
t 020 7336 7140  
f 020 7336 7150  
e info@jamesgorstarchitects.com



DRAWING SCALE:	DRAWING NUMBER:	REVISION:
1:100 @A1 1:200 @A3	P/104	B