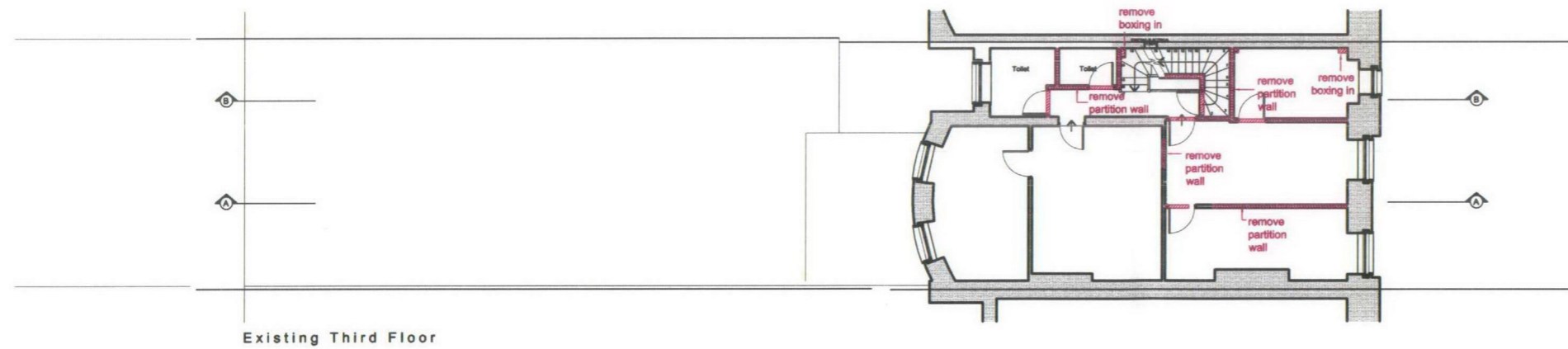


USE FIGURED DIMENSIONS ONLY
DO NOT SCALE FROM THIS DRAWING.

ALL DIMENSIONS MUST BE CHECKED ON SITE ANY
INCONSISTENCIES MUST BE REPORTED BACK TO THE ARCHITECT.

THIS DRAWING AND ANY DESIGNS INDICATED THEREON ARE THE
COPYRIGHT OF BROOKS / MURRAY ARCHITECTS.
ALL RIGHTS ARE RESERVED.
NO PART OF THIS WORK MAY BE PRODUCED WITHOUT PRIOR
PERMISSION IN WRITING FROM BROOKS / MURRAY ARCHITECTS.

RECEIVED
30 JUN 2009



Existing Third Floor

BROOKS / MURRAY

ARCHITECTS

8-10 NEW NORTH PLACE
LONDON EC2A 4JA

TEL 020 7739 9955
FAX 020 7739 9944

architects@brooksmurray.com

CLIENT: Rosedale Ltd.
JOB: 7 Fitzroy Square
DATE: Sept. '08 SCALE: 1:200
DRAWING TITLE: Proposed Demolition plans Third floor plan
DRAWING NUMBER: 732- P014