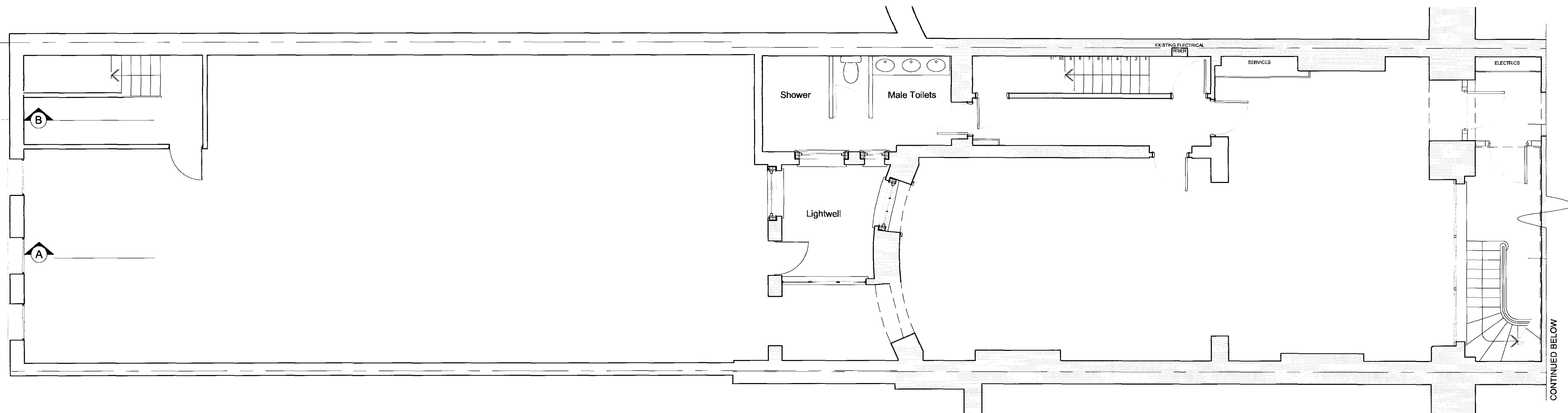
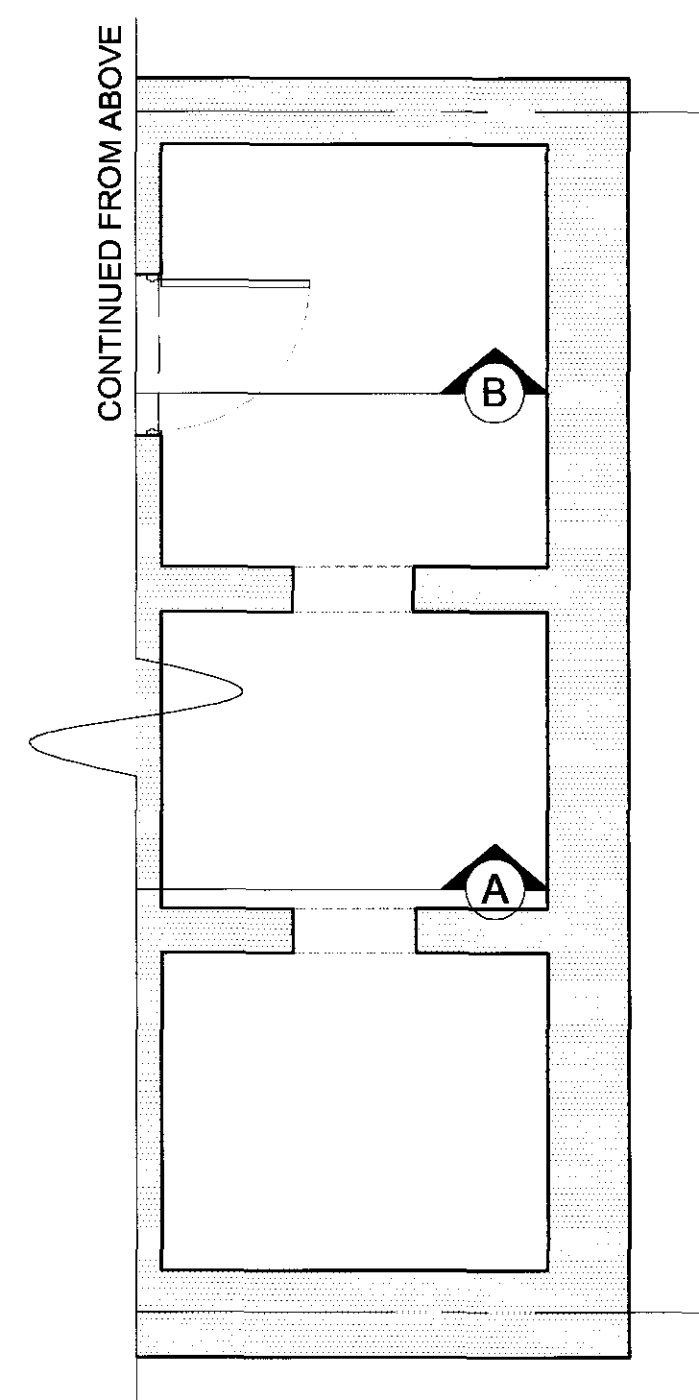


USE FIGURED DIMENSIONS ONLY
DO NOT SCALE FROM THIS DRAWING
ALL DIMENSIONS MUST BE CHECKED ON SITE ANY
INCONSISTENCIES MUST BE REPORTED BACK TO THE ARCHITECT
THIS DRAWING AND ANY DESIGNS INDICATED THEREON ARE THE
COPYRIGHT OF BROOKS / MURRAY ARCHITECTS
ALL RIGHTS ARE RESERVED
NO PART OF THIS WORK MAY BE PRODUCED WITHOUT PRIOR
PERMISSION IN WRITING FROM BROOKS / MURRAY ARCHITECTS



Existing Lower Ground Floor



A Revised width of mews building
Rev Amendments

06/05/09
Date

BROOKS / MURRAY
ARCHITECTS
8-10 NEW NORTH PLACE
LONDON EC2A 4JA
TEL 020 7739 9955
FAX 020 7739 9944
architects@brooks-murray.com

CLIENT: Rosedale Ltd
JOB: 7 Fitzroy Square
DATE: Sept. '08 SCALE: 1:50
DRAWING TITLE: Existing Lower Ground Floor
DRAWING NUMBER: 732-E001 Rev A