



NEW BLACK ALUMINIUM FRAMED WINDOW TO REPLACE EXISTING TIMBER FRAMED WINDOW

NEW ENTRANCE LOBBY

NEW BLACK ALUMINIUM FRAMED WINDOW TO REPLACE EXISTING TIMBER FRAMED DOOR

NEW BLACK ALUMINIUM FRAMED WINDOW TO REPLACE EXISTING TIMBER FRAMED DOOR

NEW BLACK ALUMINIUM FRAMED SLIDING DOORS TO REPLACE EXISTING TIMBER FRAMED WINDOWS

EXTENT OF BALCONY TO REMAIN

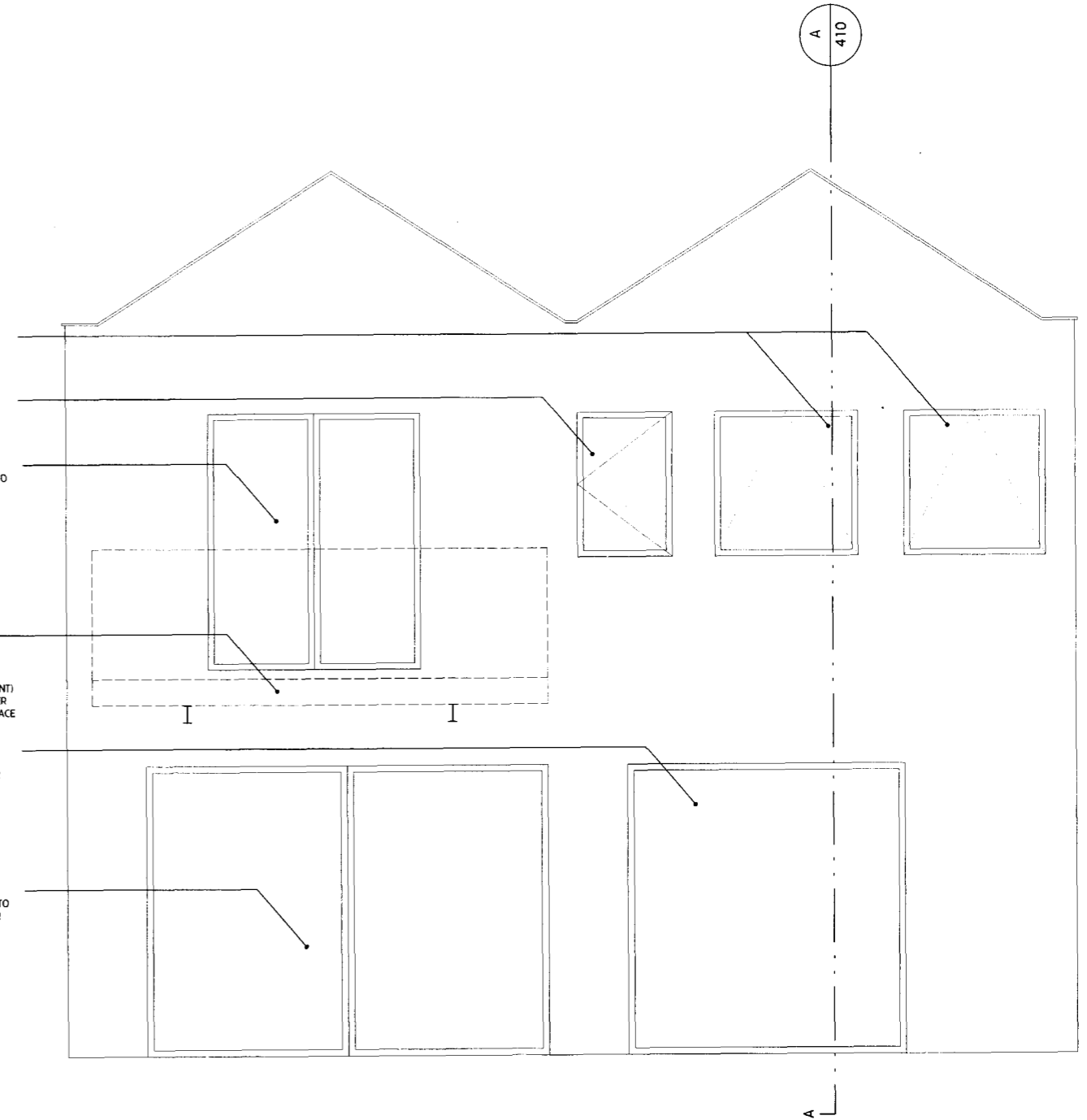
CHARCOAL GREY (MID PAINT) STEEL CLADDING TO LOWER HALF OF FACADE TO REPLACE EXISTING TIMBER

NEW BLACK ALUMINIUM FRAMED WINDOW TO REPLACE EXISTING TIMBER FRAMED WINDOW

NEW BLACK ALUMINIUM FRAMED WINDOW

NEW BLACK ALUMINIUM FRAMED SLIDING DOORS TO REPLACE EXISTING TIMBER FRAMED WINDOWS

NEW BLACK ALUMINIUM FRAMED SLIDING DOORS



01 PROPOSED FRONT ELEVATION (MINUS BOUNDARY)

02 PROPOSED REAR ELEVATION

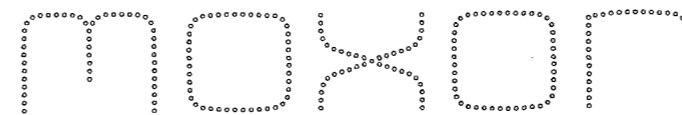
A ISSUED FOR PLANNING

TJB 10.07.09

NOTES

Moxon Architects Limited

This drawing is copyright. All rights reserved.
Do not scale from this drawing: work from figured dimensions only.



LONDON

Chepstow Studios, 102 Chepstow Road, London W2 5QS t. 0207 034 0088 mail@moxonarchitects.com
f. 0207 034 0099 www.moxonarchitects.com

PROJECT TITLE		47 MURRAY MEWS				
DRAWING TITLE		PROPOSED ELEVATIONS				
DWG STATUS		PLANNING				
DRAWN	TJB	FILE	257/111	DATE	23.04.09	
CHECKED	BMA	JOB NO.	257	SCALE	1:50	
					REVISION	A
					DWG NO.	257_311