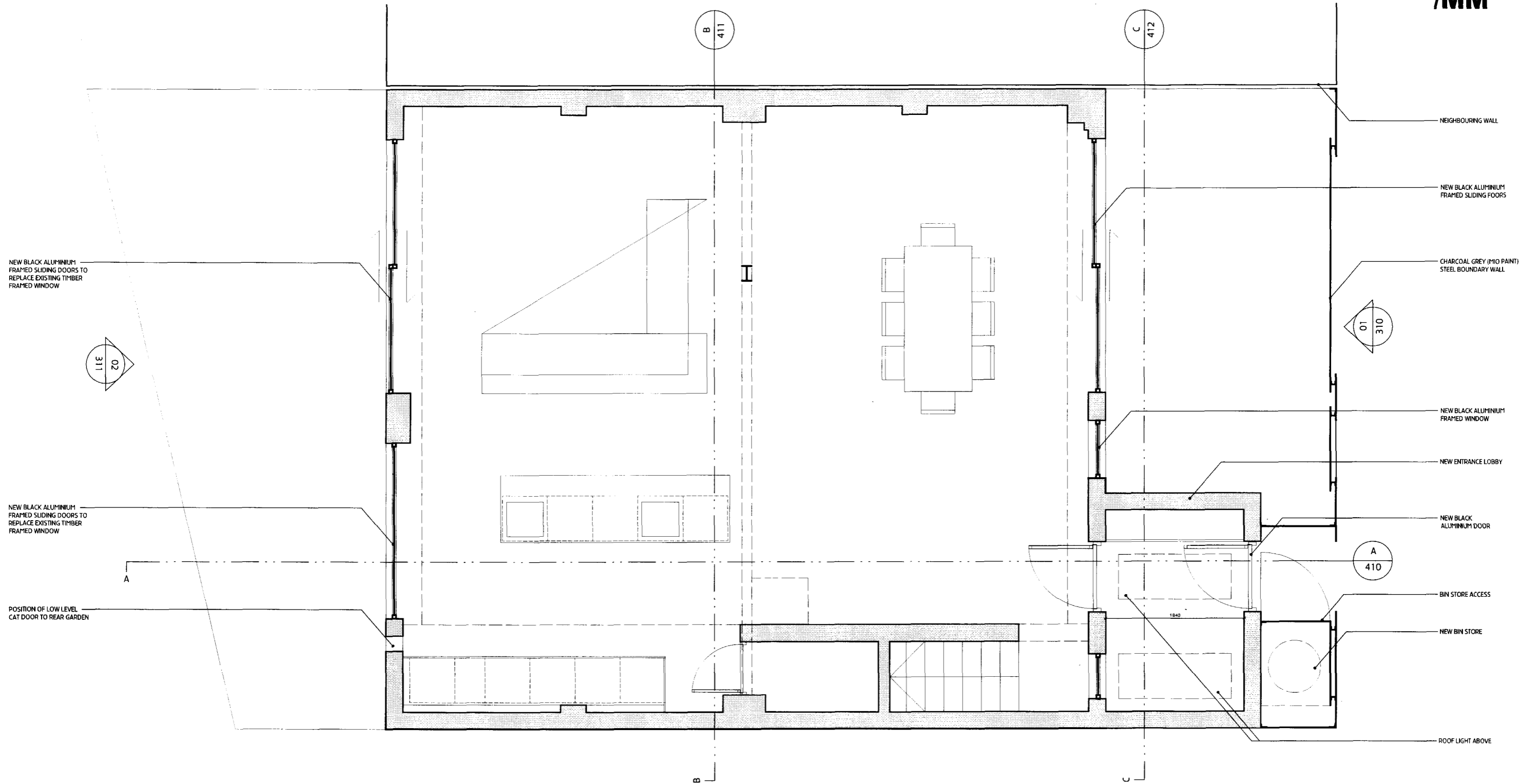
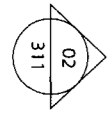


**257
/MM**



NEW BLACK ALUMINIUM
FRAMED SLIDING DOORS TO
REPLACE EXISTING TIMBER
FRAMED WINDOW



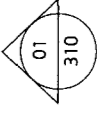
NEW BLACK ALUMINIUM
FRAMED SLIDING DOORS TO
REPLACE EXISTING TIMBER
FRAMED WINDOW

POSITION OF LOW LEVEL
CAT DOOR TO REAR GARDEN

NEIGHBOURING WALL

NEW BLACK ALUMINIUM
FRAMED SLIDING DOORS

CHARCOAL GREY (P10 PAINT)
STEEL BOUNDARY WALL



NEW BLACK ALUMINIUM
FRAMED WINDOW

NEW ENTRANCE LOBBY

NEW BLACK
ALUMINIUM DOOR



BIN STORE ACCESS

NEW BIN STORE

ROOF LIGHT ABOVE

01 GROUND FLOOR PLAN

A ISSUED FOR PLANNING

TJB 10.07.09

NOTES

Moxon Architects Limited

This drawing is copyright. All rights reserved.
Do not scale from this drawing: work from figured dimensions only.



LONDON

Chepstow Studios, 102 Chepstow Road, London W2 5QS t: 0207 034 0088 mail@moxonarchitects.com
f: 0207 034 0099 www.moxonarchitects.com

PROJECT TITLE		47 MURRAY MEWS			
DRAWING TITLE		PROPOSED GROUND FLOOR PLAN			
DWG STATUS		PLANNING			
DRAWN	TJB	FILE	257/MM	DATE	15.04.09
CHECKED	BMA	JOB NO.	257	SCALE	1:100
		REVISION	A		DWG NO.
				257_210	