

# PART FRONT ELEVATION

CUSTOMER ENTRANCE

## FASCIA SIGN - 6030 long x 630 high x 180 deep

**INTERNALLY ILLUMINATED "FLEX-FACE" FASCIA SIGN:** -  
Comprising an aluminium box with a tough, flexible vinyl face incorporating a nylon mesh fused inside in corporate colours as detailed below. Vinyl graphics are adhered to the face as indicated. The aluminium box projects 180mm from the face of the building, and has a 50mm clearance to all sides to allow for tightening of the vinyl skin.

ILLUMINATION IS BY INTERNAL FLUORESCENT TUBES.

The main display reads "DOMINO'S" in WHITE on a BLUE background.  
The Domino's logo is in RED/WHITE/BLUE.  
The band along the bottom edge is YELLOW.

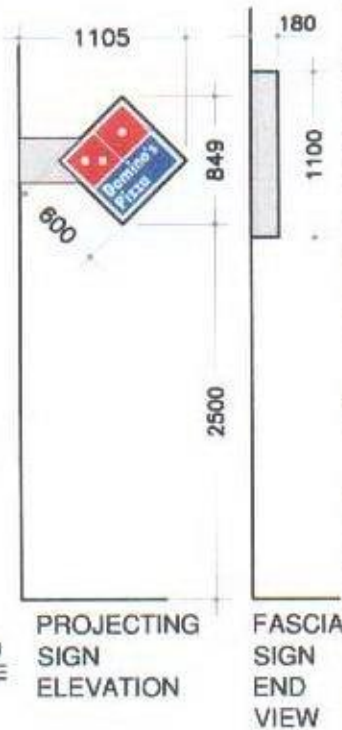
## PROJECTING SIGN - Double Sided

**INTERNALLY ILLUMINATED SIGN:** -  
Rigid acrylic panels in corporate colours as detailed below, in an aluminium frame

ILLUMINATION IS BY INTERNAL FLUORESCENT TUBES.  
Logo - RED/WHITE/BLUE

## INTERNAL WINDOW SIGN

500mm Ø sign hung on chains behind shopfront glass, consisting of a blue circular acrylic box with "OPEN" in high intensity WHITE LED lights projecting slightly from the face.



## LUMINANCE

Maximum luminance of all signs is 200 candelas/m².

## STANDARD SIGN COLOURS

- Blue - RAL 5002 Blue
- Vinyl Blue - Ultramark (Spandex) 5750T - Cobalt Blue
- Acrylic Blue - Perspex 750
- Silver Vinyl - Fasson Fascal 990QM (Silver Metallic)
- Silver Paint - to match vinyl above
- Red - RAL 3020 Traffic Red
- Acrylic Red - Perspex 431 or Plexiglass Rot 2757
- Vinyl Red - Ultramark (Spandex) 5730T
- Yellow - to match Pantone C37Y61/877

## STANDARD TYPEFACES

"Domino's" - Futura Extra Bold Condensed

## WINDOW FILM

Applied internally for security/privacy. Etched vinyl film to Drivers' Door to provide partial obscurity, with Domino's logo fully weeded out to give clear vision through. Silver opaque film elsewhere as indicated.

## MANIFESTATION

Where required, manifestation to glazing to be in accordance with Building Regulations Pt. N2. Manifestation to be in the form of 150mm high miniature vinyl domino's applied to inside face of glass @ 250mm centres, in bands at two levels above FFL/GL - 850mm to underside of lower band and 1600mm to top of upper band.

A Ramp omitted from entrance.

27.1.09

**HATTRELL DS One Architects LLP**  
CHARTERED ARCHITECTS

**COVENTRY** 1 COPTHALL HOUSE STATION SQUARE  
TELEPHONE: 024 7632 6446  
e-mail: ds@hdtrell.co.uk www.hdtrell.co.uk

**MANCHESTER** COVENTRY CV1 2PQ  
FACSIMILE: 024 7652 8446  
MANCHESTER M1 3JQ  
FACSIMILE 0161 239 7881

CLIENT	DOMINO'S PIZZA GROUP LTD	
PROJECT	166 High Holborn London. WC1V 6TT	
TITLE	PROPOSED SIGNAGE	
DRAWING No	4446-SF03	REVISION
		A

SCALE @ A4	DATE
1:50	17.12.08

DRAWN BY  
VJames

**NOTES:**  
CONTRACTORS MUST VERIFY ALL DIMENSIONS ON SITE BEFORE COMMENCEMENT OF ANY WORK OR FABRICATING MANUFACTURING DRAWINGS  
DO NOT SCALE FROM THE DRAWING  
ANY DISCREPANCIES ON THE DRAWING ARE TO BE NOTIFIED TO THE ARCHITECT IMMEDIATELY  
HATTRELL DS One Architects LLP COPYRIGHT