

This drawing is copyrighted and owned by Capita Symonds Ltd and is for use on this site only

Do not scale this drawing (printed or electronic versions). Contractors must check all dimensions from site

All other design team elements, where indicated, have been imported from the consultant's drawings and reference should be made to the individual consultant's drawings for further setting out, size and type of component.

Discrepancies and/or ambiguities within this drawing, between it and information given elsewhere, must be reported immediately to the architect for clarification before proceeding.

All works are to be carried out in accordance with the latest British Standards and Codes of practice unless specifically directed otherwise in the specification.

Responsibility for the reproduction of this drawing in paper form, or if issued in electronic format, lies with the recipient to check that all information has been transferred correctly and that any components for the original paper or electronic image. Graphical representations of equipment on this drawing have been re-contrasted, but are approximations only. Please refer to Specifications and / or details for actual size, and for specific contractor construction information.

A Trading Division of Capita Symonds Ltd
Registered in England No. 1018542; 71 Victoria Street, Westminster, London SW1H 0XA

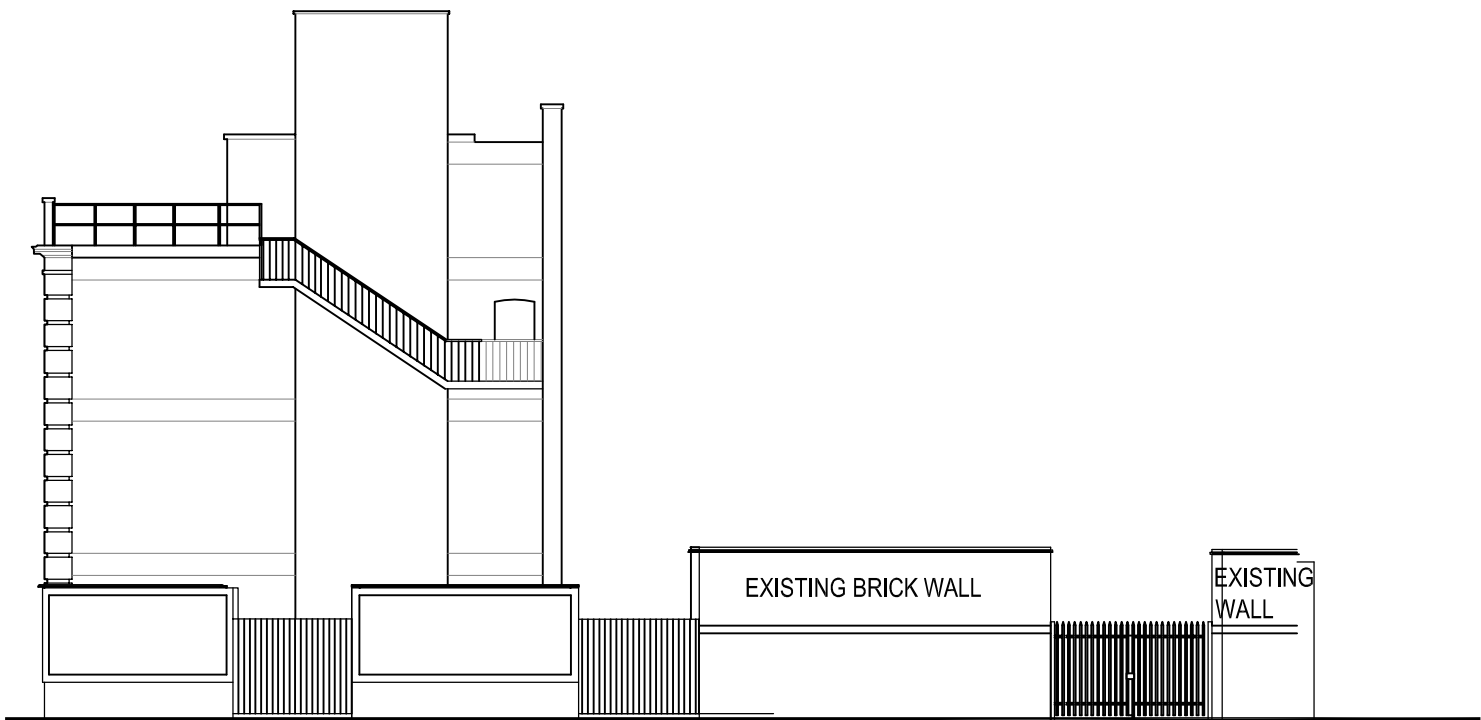
SAFETY, HEALTH AND ENVIRONMENTAL INFORMATION

For Construction Design Management (CDM) risk assessment please refer to document number: 00-X0-06-X00-XXX-00-000000

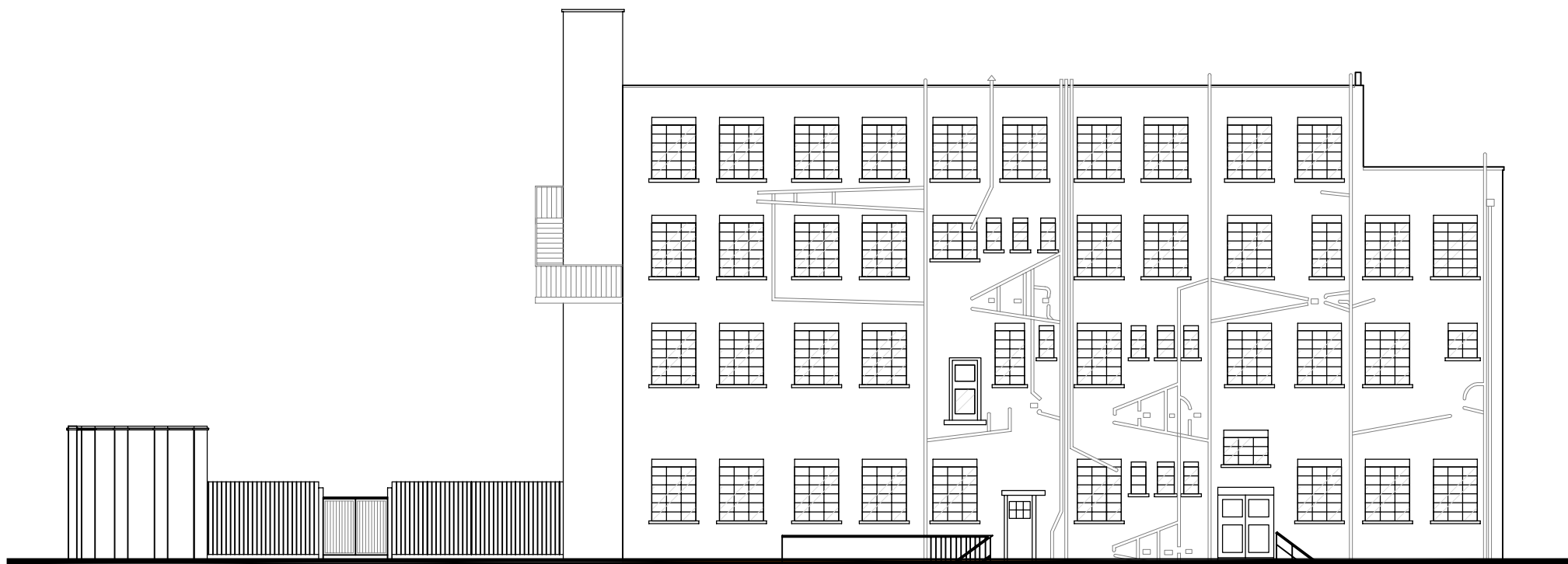
It is assumed that all works on this drawing will be carried out by a competent contractor, working where appropriate to an approved method statement.

[illegible][illegible]

EXISTING PRATT ST (SOUTH) ELEVATION
SCALE 1:200



EXISTING ROYAL COLLEGE ST (EAST) ELEVATION
SCALE 1:200



EXISTING NORTH ELEVATION
SCALE 1:200

