

TYPE-QUANTITY: 38 off

Revisions

Not To Scale

BCM

GRC Limited

www.bcmgrc.com

Great Northern Hotel

GRC Column Encasement
Lower Casing
GRC REF:

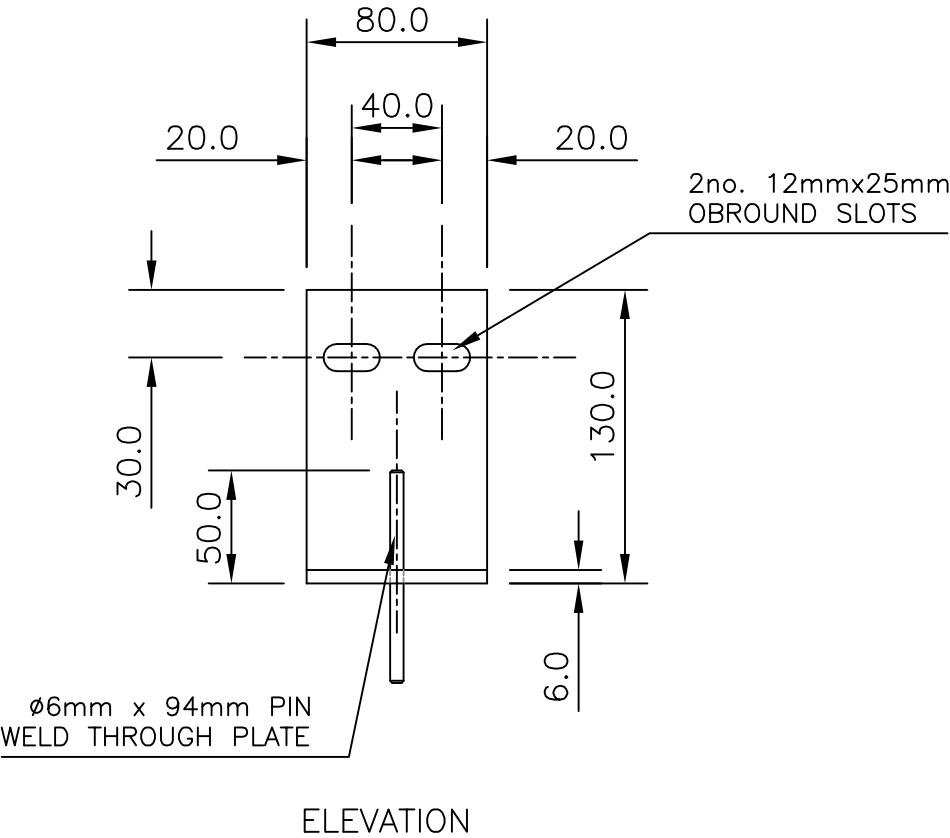
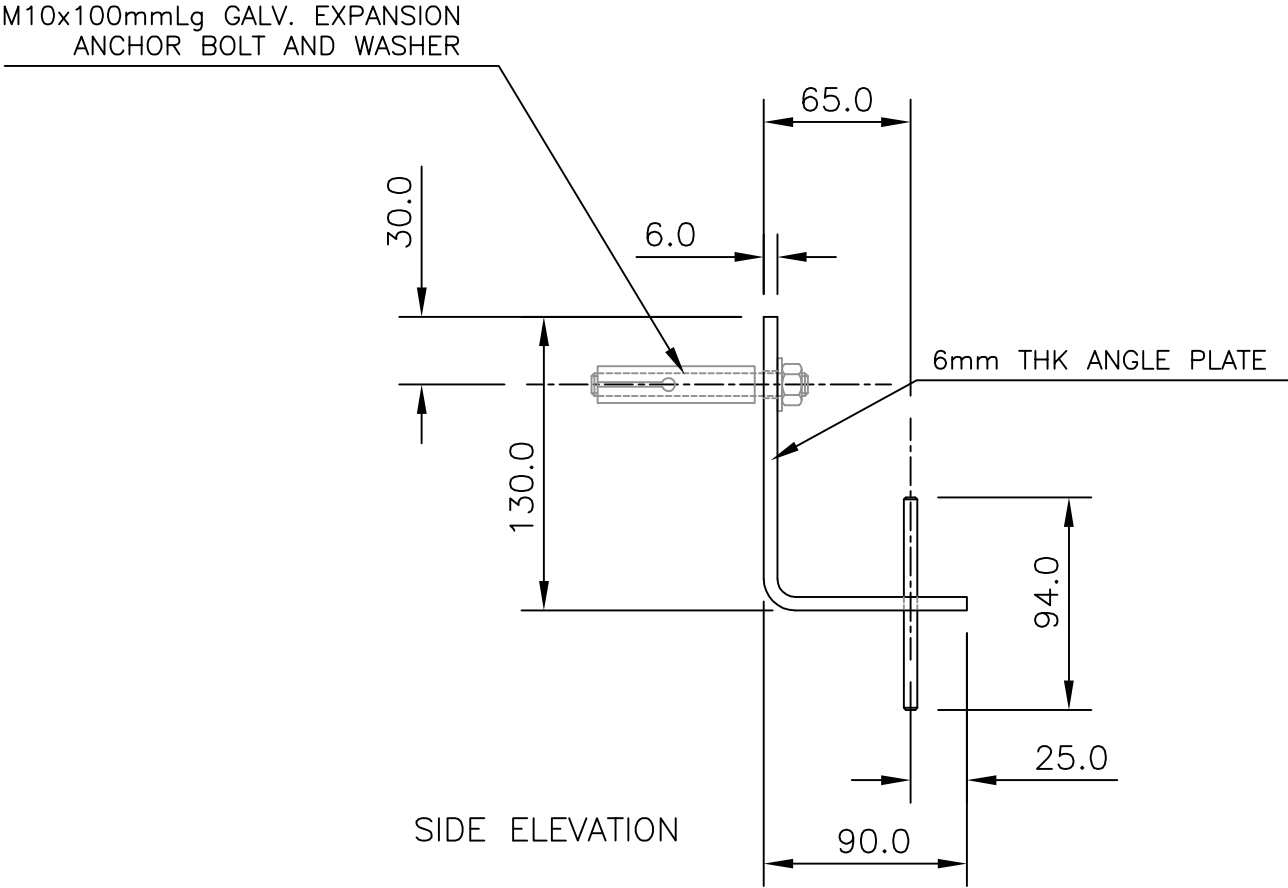
Dwg No: 20506/BCM/01

Rev: 00

Drwn By: TAG/TED

Date: 05.05.09

BRACKETS FROM 6mm MILD STEEL PLATE (HOT DIP GALV. FINISH)

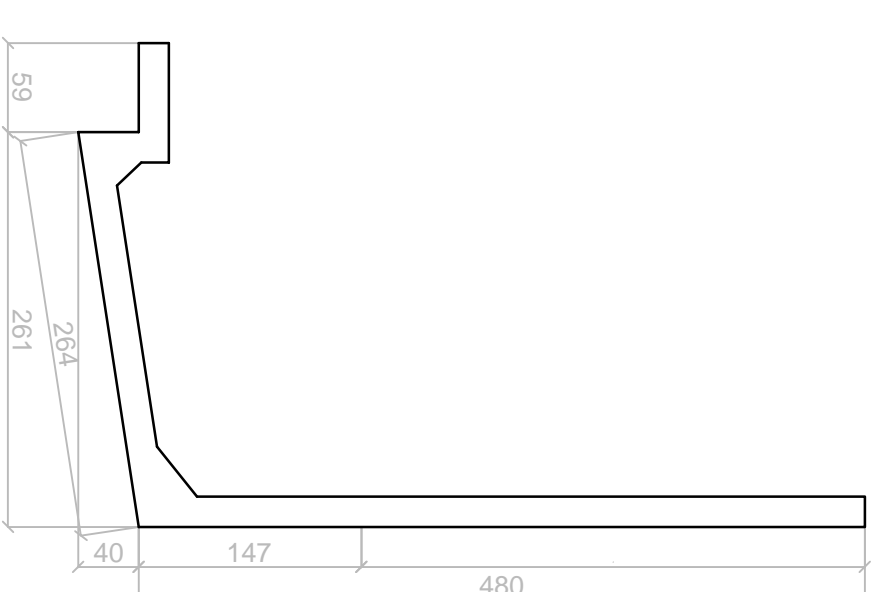
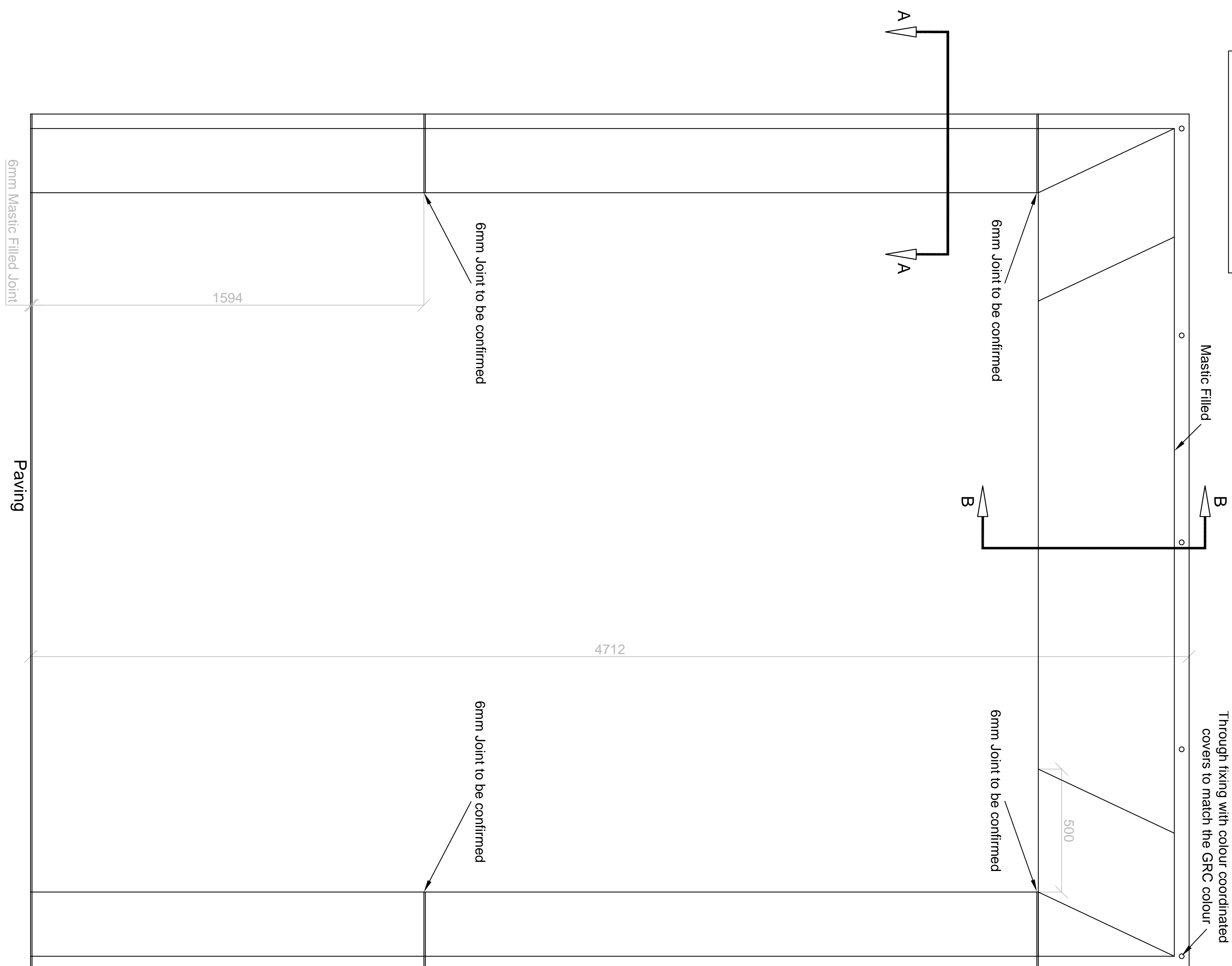


TYPE—QUANTITY: 76 off

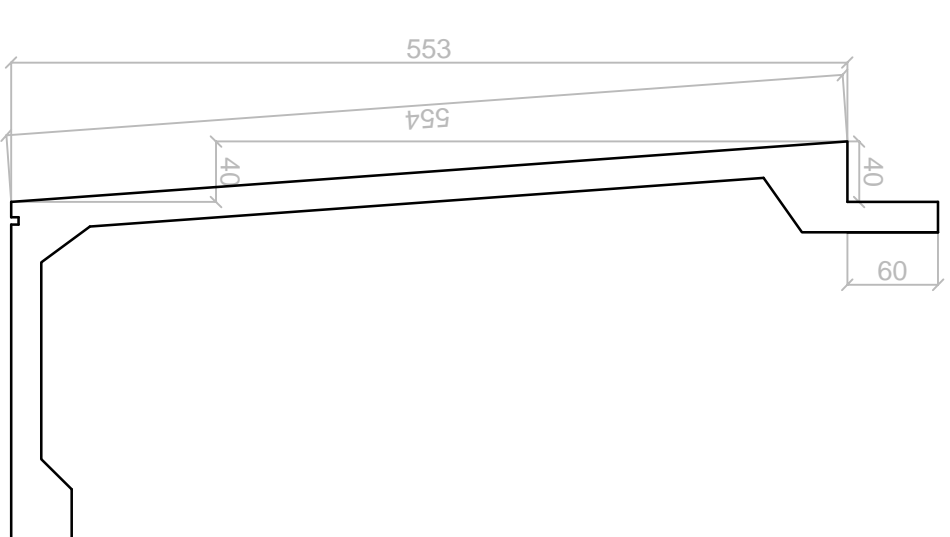
Revisions	
Not To Scale	
BCM	
GRC Limited	
www.bcmgrc.com	
Great Northern Hotel	
GRC Column Encasement Intermediate Fixing GRC REF:	
Dwg No:	20506/BCM/05
Rev:	00
Drwn By:	TAG/TED
Date:	05.05.09

A1

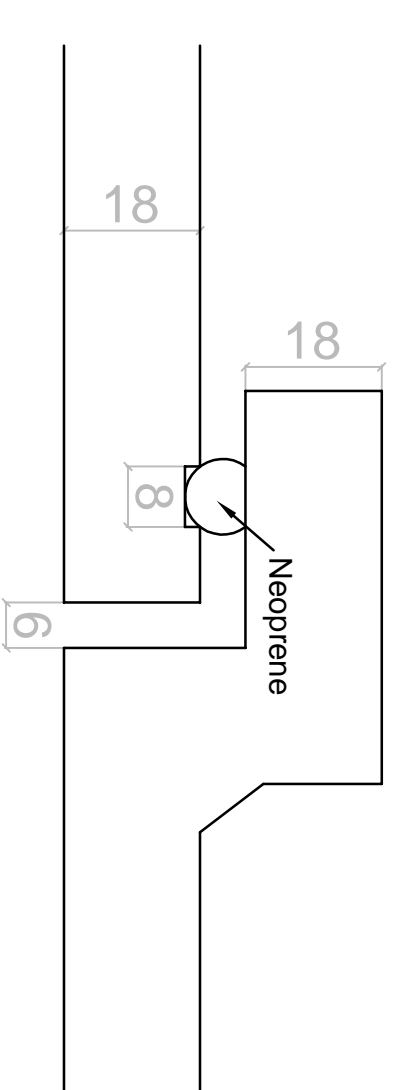
Portal Elevation : Typical
Opening Surround @ 1:10



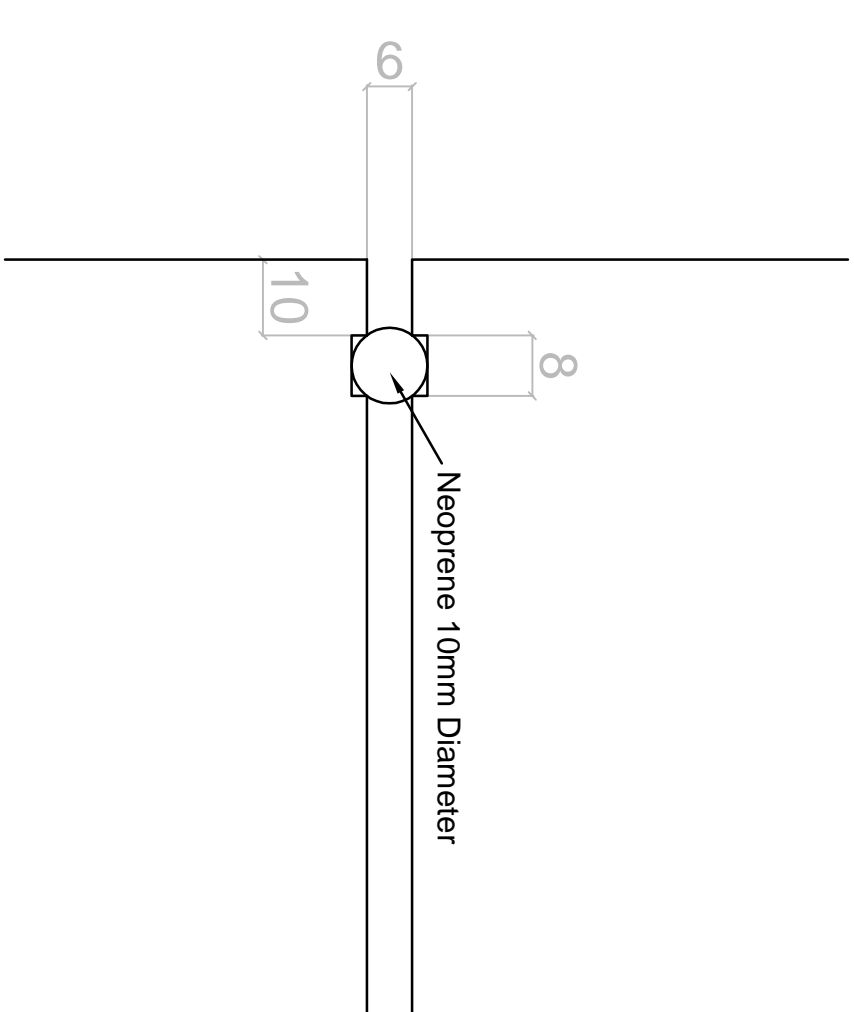
Jamb Detail : Profile at A-A
@ 1:5



Head Detail : Profile at B-B
@ 1:5



Joint Detail to Head @ 1:1



Joint Detail to Jamb @ 1:1

Rev A - Extra Details added & dummy joint removed 11/05/09 (TED)

Troika Contracting Limited.
TROIKA HOUSE, 850 HERRIES ROAD, SHEFFIELD, S6 1QW
TELEPHONE: (0114 232 7000)
FAX: (0114 234 4885)

Client
WallisProject
Great North Hotel

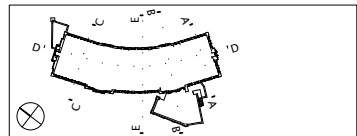
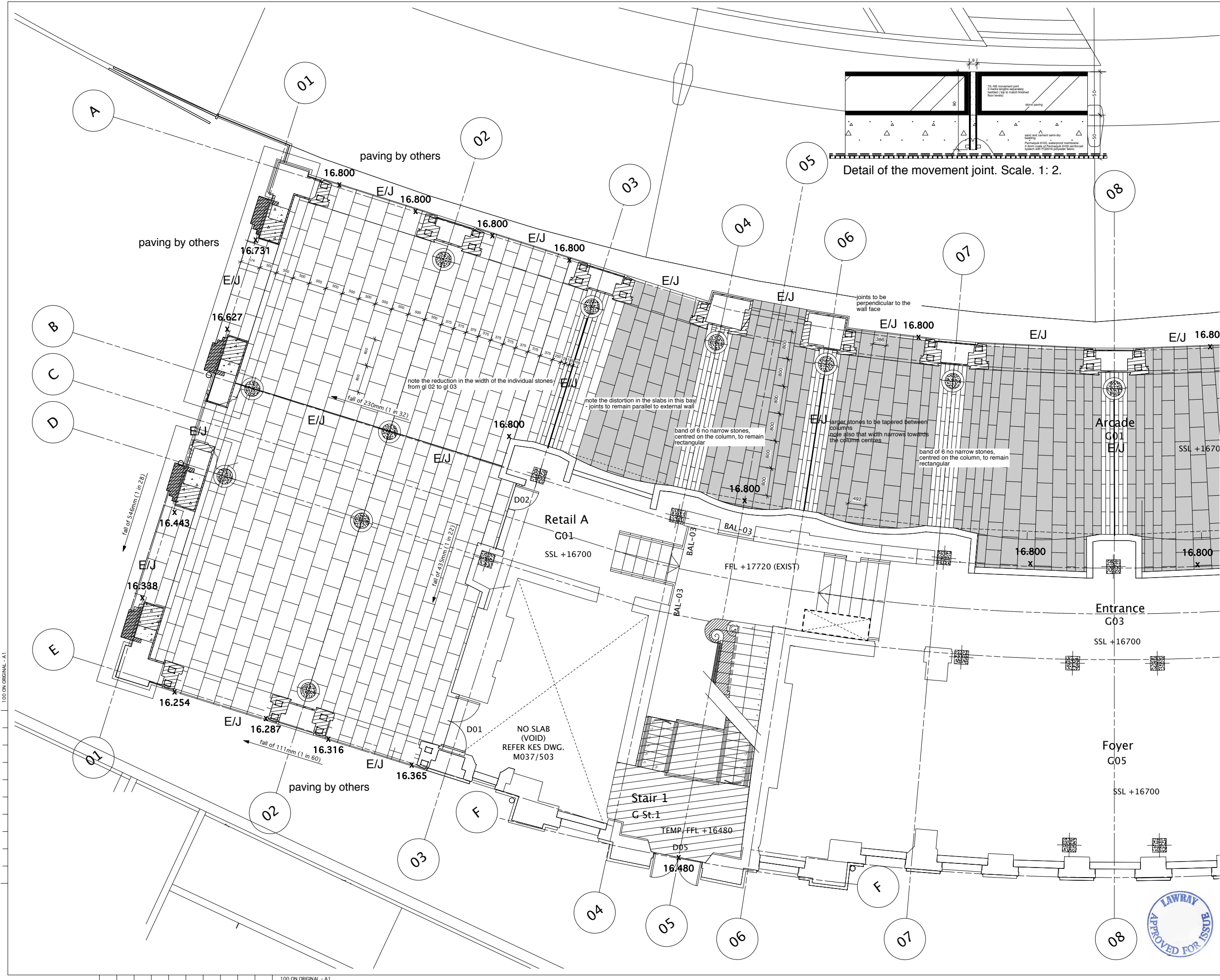
Title
GRC Portal Cladding Details

Date	April 09
Drawn	TED

PROJECT No 20506

DRAWING NO	20506/01
SCALE	As Shown

Rev Num	1st	A			
------------	-----	---	--	--	--



Do not scale from this drawing. Use figured dimensions only.
Figured dimensions are in millimetres.

All dimensions and levels shall be verified on site before proceeding with works. Detailed site survey to be carried out to verify positions and level relationships with site features and ordnance survey. The architect must be notified of any discrepancy.

Where building components are described in the specification as contractor designed, "construction" information relating to those components on this drawing represents design intent only

NOTES

Stone paving to be 50mm thick west pennine gritstone max size on plan to be 500x900mm, cut to special sizes to suit the site layout with 8mm joints. Total area of paving is approx 444 sq.m., of which the irregular shaped paving (shown shaded) is approx. 140 sq.m.

Stones to be laid to fall to achieve the indicated spot levels (at a maximum fall of 1 in 20. Falls to be achieved without additional joints. Stones to be shaped to allow for falls in two directions where required.

Paving to extend under column and portal casings

Movement joints to be Ti-Lock or similar, type TIL-NS bedded in mortar prior to laying stone bedding. To be installed around the perimeter of the stone paving, at junctions with wall faces and at max 10 metre centres

Materials and workmanship to be in accordance with GNHA/NBS section Q25

spot levels shown thus : 16.800
x

FOR CONSTRUCTION

C	Construction issue	RM	NM	10.12.08
B	Contractor's Proposal issue	NM	NM	04.02.08
A	FFL's altered to suit paving to Pancras Rd	MF	NM	12.01.08
-	FIRST ISSUE	MF	NM	20.12.07
Rev	Description	By	Chkd	Date



WALLIS

GREAT NORTHERN HOTEL
ARCADE

Ground Floor
Stone Paving

G.A. Showing Part-Plan
of Proposed (01-08)

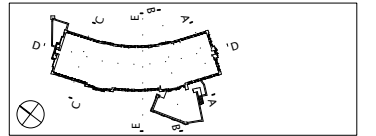
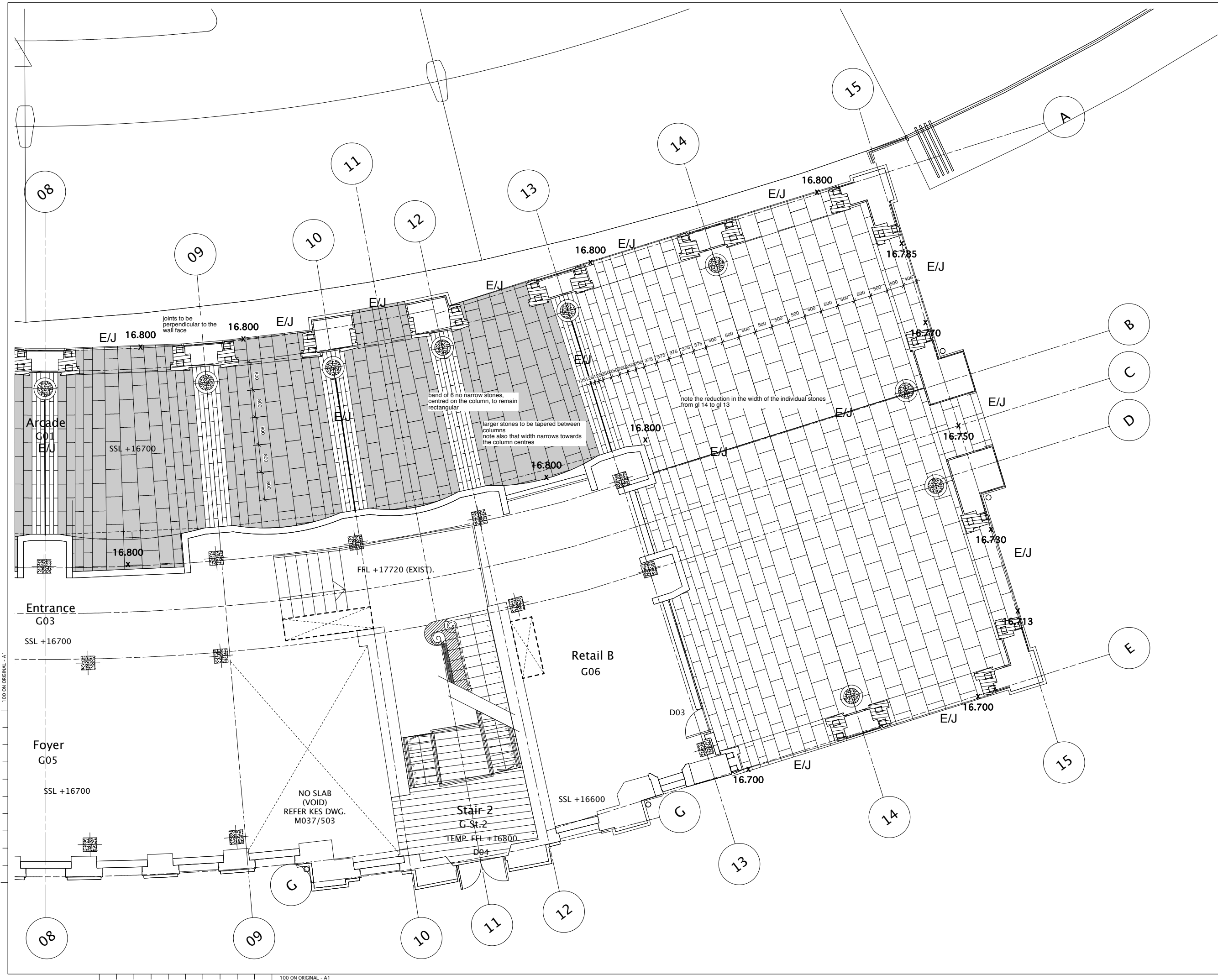
Drawn	FR	Checked	MF	Date	17.12.07	Scale	1:50 @ A1
-------	----	---------	----	------	----------	-------	-----------

Drawing No.	212_04_150/1	Sheet	1 of 2	Rev.	C
-------------	--------------	-------	--------	------	---


lawray architects

Southbank House Black Prince Road London SE1 7SJ
tel 020 7138 3560 fax 020 7138 3567 mail@lawray.com

File reference: TITLE BLOCK.dwg



Do not scale from this drawing. Use figured dimensions only.
Figured dimensions are in millimetres.

All dimensions and levels shall be verified on site before proceeding with works. Detailed site survey to be carried out to verify positions and level relationships with site features and ordnance survey. The architect must be notified of any discrepancy.

Where building components are described in the specification as contractor designed, "construction" information relating to those components on this drawing represents design intent only

NOTES

Stone paving to be 50mm thick west pennine gritstone max size on plan to be 500x900mm, cut to special sizes to suit the site layout with 8mm joints. Total area of paving is approx 444 sq.m., of which the irregular shaped paving (shown shaded) is approx. 140 sq.m.

Stones to be laid to fall to achieve the indicated spot levels at a maximum fall of 1 in 20. Falls to be achieved without additional joints. Stones to be shaped to allow for falls in two directions where required.

Paving to extend under column and portal casings.

Movement joints to be Ti-Lock or similar, type TIL-NS bedded in mortar prior to laying stone bedding. To be installed around the perimeter of the stone paving, at junctions with wall faces and at max 10 metre centres - see drawing 212-04-150/1 for detail

Materials and workmanship to be in accordance with GNHA/NBS section Q25

spot levels shown thus : 16.800 or x
x 16.800

FOR CONSTRUCTION

C	Construction issue	RM	NM	10.12.08
B	Contractor's Proposal issue	NM	NM	04.02.08
A	FFL's altered to suit paving to Pancras Rd	MF	NM	12.01.08
-	FIRST ISSUE	MF	NM	20.12.07
Rev	Description	By	Chkd	Date



GREAT NORTHERN HOTEL
ARCADE

Ground Floor
Stone Paving

G.A. Showing Part-Plan
of Proposed (08-15)

Drawn FR	Checked MF	Date 17.12.07	Scale 1:50 @ A1
Drawing No. 212_04_150/2	Sheet 2 of 2	Rev. C	

lawray architects

Southbank House Black Prince Road London SE1 7SJ
tel 020 7138 3560 fax 020 7138 3567 mail@lawray.com

File reference: TITLE BLOCK.dwg

Stainless Steel Components.

KEY:

- | | |
|--------------|----------------------|
| 1. BLK-03a | 3. REN-01c |
| blockwork | lime render |
| REN-01a | PT-08 |
| lime render | paint finish |
| PT-08 | 4. AM-07 |
| paint finish | ss angle |
| 2. BLK-03 | 5. TRM-02 |
| blockwork | ss skirting |
| REN-01a | 6. AM-06 |
| render | ss column protection |
| PT-08 | 7. REN-01b |
| paint finish | lime render |
| | PT-08 |
| | paint finish |

NOTES :

- ELEVATIONS ARE DRAWN FLATTENED

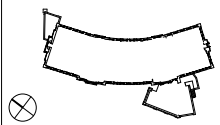
MJ

LIGHTING:

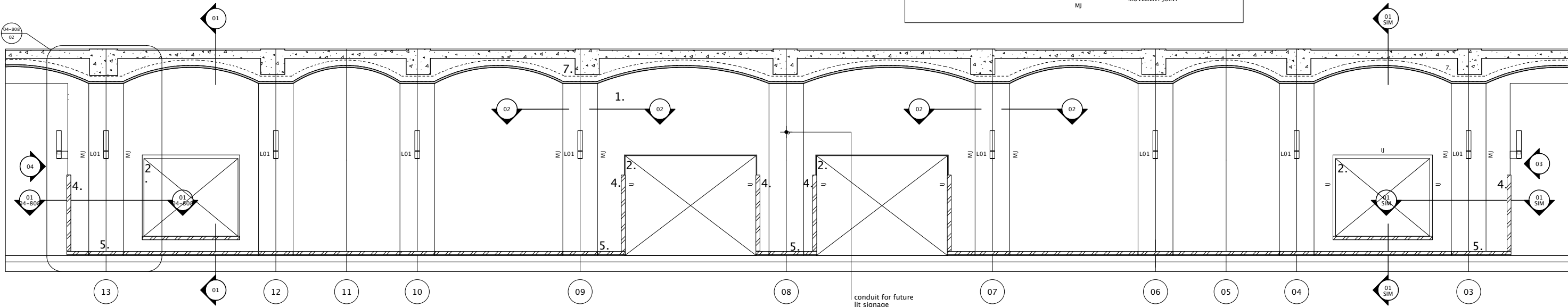
LO1 wall mounted light fitting
refer lighting drawings

EXTERNAL JOINERY:

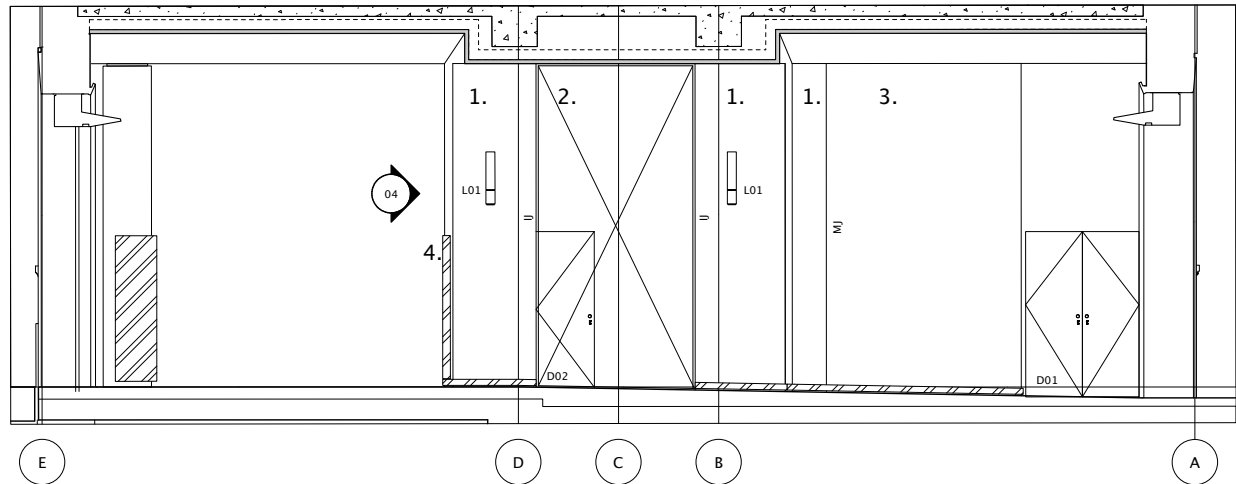
D01 DRT-01b
timber door
PT-09
paint finish
D02 DRT-01
temporary door
PT-09
paint finish
D08 DRT-01
temporary door
PT-09
paint finish



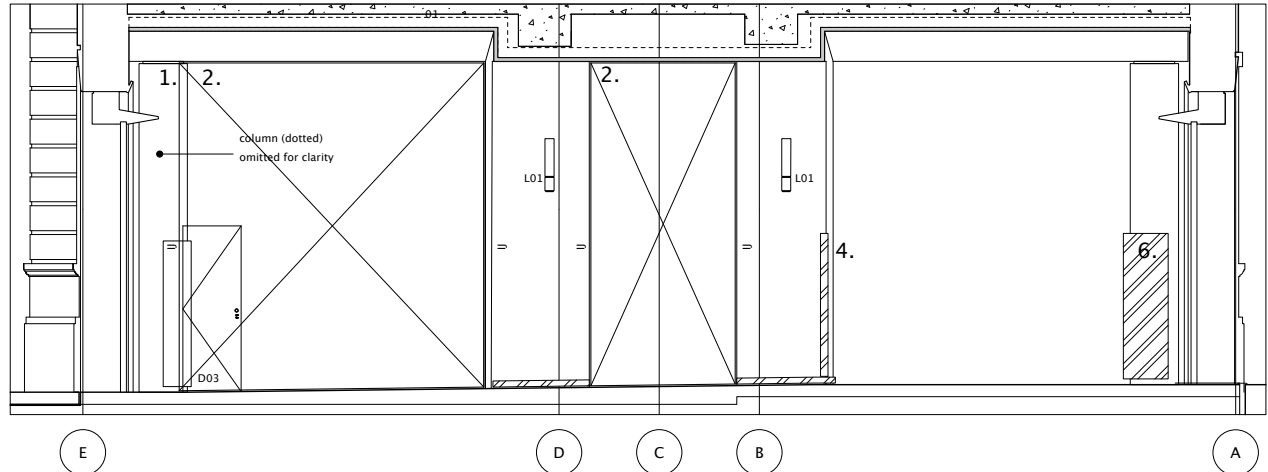
Do not scale from this drawing. Use figured dimensions only.
Figured dimensions are in millimetres.
All levels are in millimetres.
All dimensions and levels shall be verified on site before
proceeding with works. Detailed site survey to be carried out to
verify positions and level relationships with site features and
ordnance survey. The architect must be notified of any
discrepancy.
Where building components are described in the specification as
contractor designed, "construction" information relating to those
components on this drawing represents design intent only



01 NORTHEAST ARCADE ELEVATION

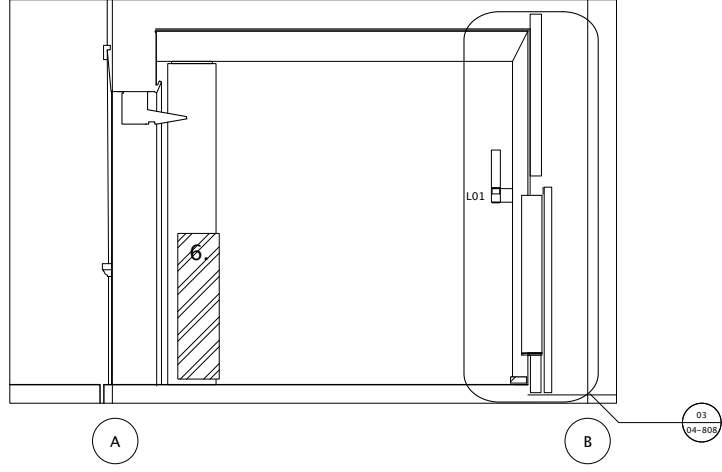


02 NORTHWEST ARCADE ELEVATION



03 SOUTHEAST ARCADE ELEVATION

04 SECTION GG



FOR CONSTRUCTION

B	Construction issue	RM	NM	10.12.08
A	Contractor's Proposal issue	RM	NM	08.02.08
-	FIRST ISSUE.	JR	MF	12.12.07
Rev	Description	By	Chkd	Date



WALLIS

GREAT NORTHERN HOTEL
ARCADE

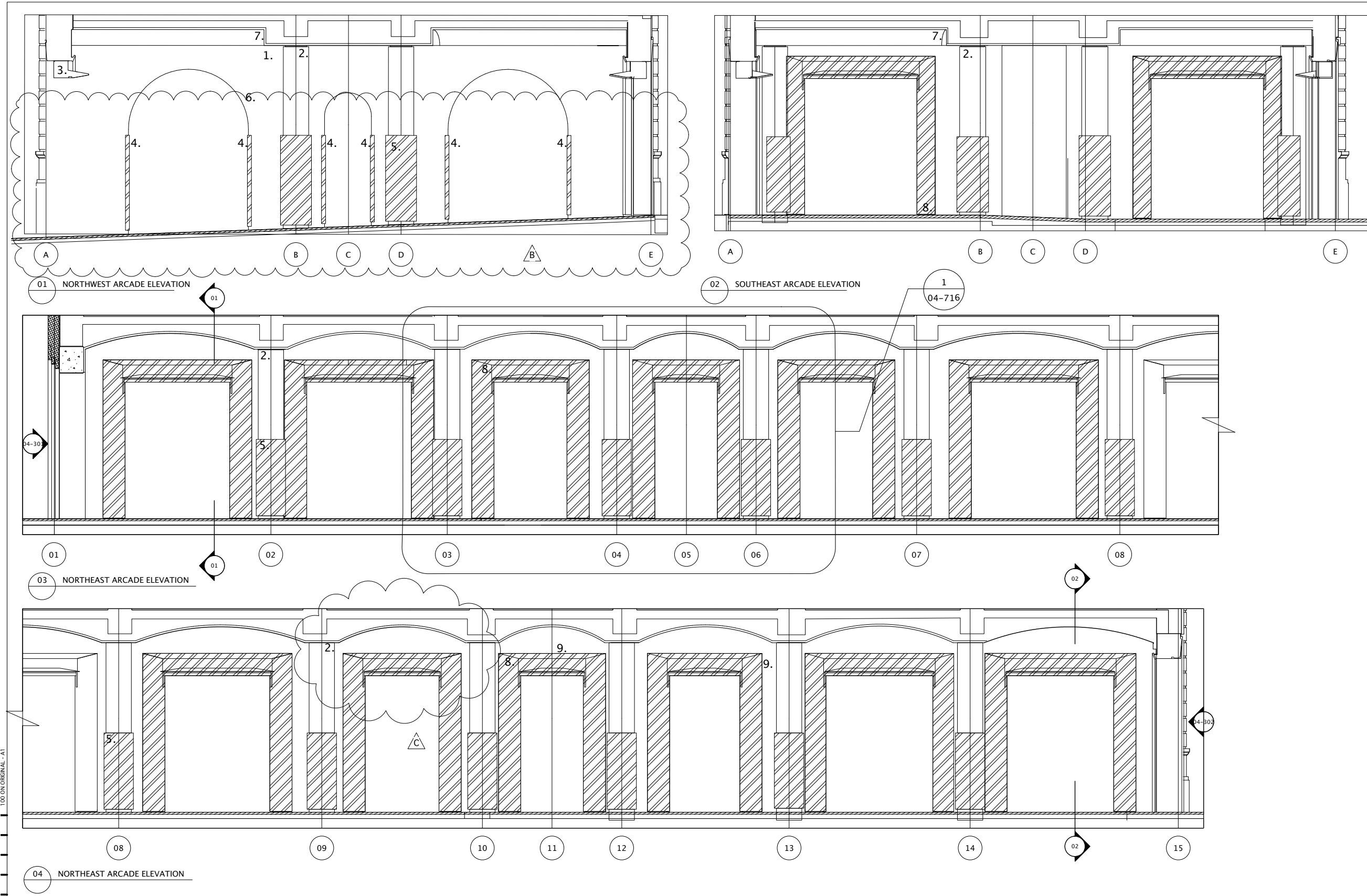
Internal Arcade Elevations

G.A. SHOWING PROPOSED

Drawn	RM	Checked	MF	Date	12.07	Scale	1:50 @ A1
Drawing No.	212_04_708				Rev.	B	



Southbank House Black Prince Road London SE1 7SJ
tel 020 7138 3560 fax 020 7138 3567 mail@lawray.com
File reference: TITLE BLOCK.dwg



Do not scale from this drawing. Use figured dimensions only. Figured dimensions are in millimetres. All levels are in millimetres. All dimensions and levels shall be verified on site before proceeding with works. Detailed site survey to be carried out to verify positions and level relationships with site features and ordnance survey. The architect must be notified of any discrepancy. Where building components are described in the specification as contractor designed, "construction" information relating to those components on this drawing represents design intent only

- NOTES
- KEY:
- | | |
|--|---|
| 1. REN-01
lime render
PT-08
paint finish | 5. AM-06
ss column protection
6. BAC-01
precast arch with brick facing
7. REN-01b
lime render
PT-08
paint finish |
| 2. EWS-34a
GRC column casing
PT-08
paint finish | 8. AM-02
ss portal casing
9. REN-01c
lime render
PT-08
paint finish |
| 3. AM-05
shutter housing
4. AM-07
ss angle | 10. AM-09
ss handrail |
- NOTES :
- ELEVATIONS ARE DRAWN FLATTENED

Stainless Steel Components.

FOR CONSTRUCTION

C	Drafting alteration - steel box frame omitted	NM	NM	26.02.09
B	Construction issue	RM	NM	10.12.08
A	Contractor's Proposal issue	NM	NM	05.02.08
-	FIRST ISSUE.	JR	MF	12.07
Rev	Description	By	Chkd	Date



WALLIS

GREAT NORTHERN HOTEL
ARCADE

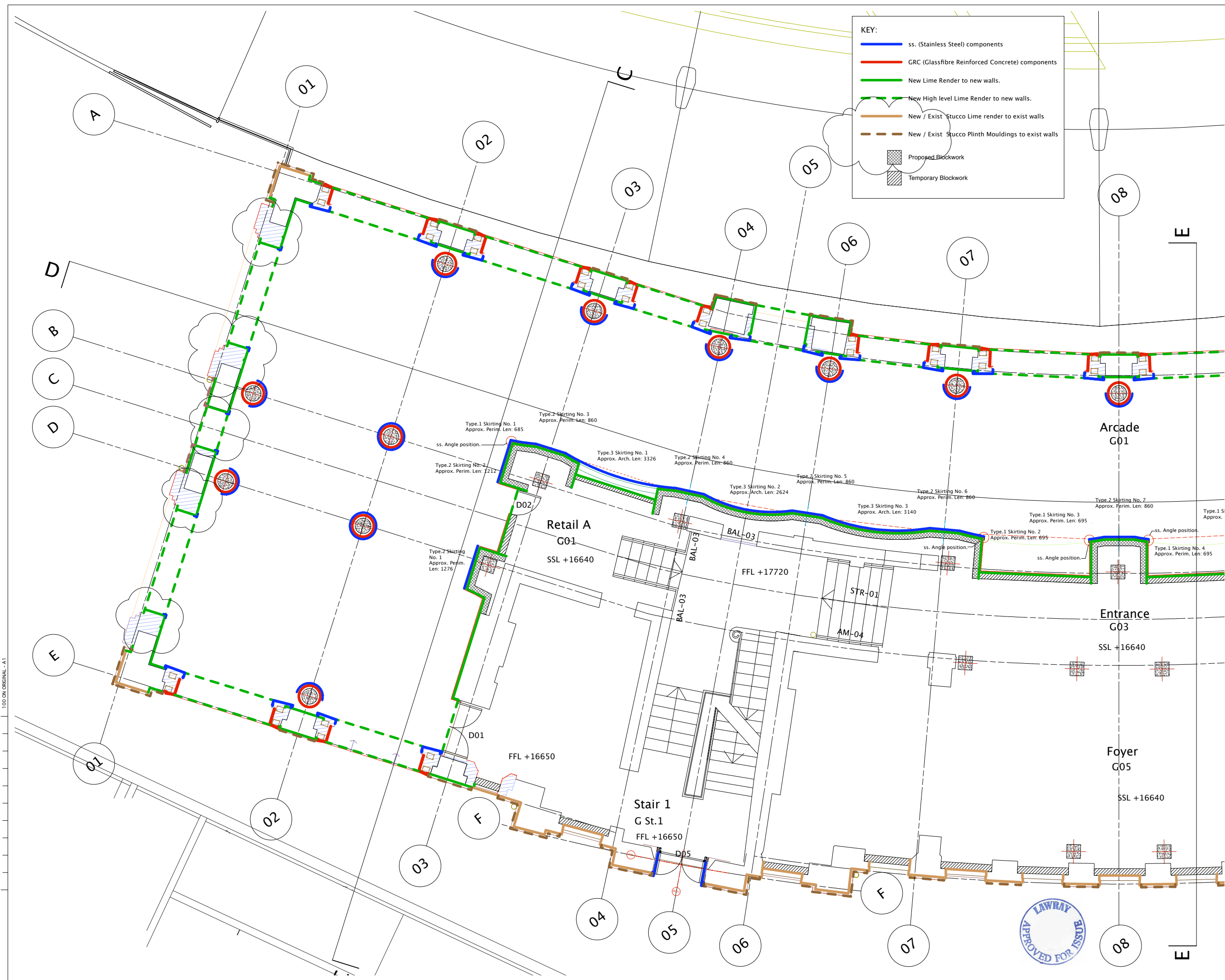
Arcade Elevations 02

G.A. SHOWING PROPOSED

Drawn RM	Checked MF	Date 12.07	Scale 1:50 @ A1
Drawing No. 212_04_711	Rev. C		

lawray architects
Southbank House Black Prince Road London SE1 7SJ
tel 020 7138 3560 fax 020 7138 3567 mail@lawray.com
File reference: TITLE BLOCK.dwg





KEY:

- ss. (Stainless Steel) components
- GRC (Glassfibre Reinforced Concrete) components
- New Lime Render to new walls.
- New High level Lime Render to new walls.
- New / Exist Stucco Lime render to exist walls
- New / Exist Stucco Plinth Mouldings to exist walls
- Proposed Blockwork
- Temporary Blockwork

Do not scale from this drawing. Use figured dimensions only. Figured dimensions are in millimetres. All levels are in millimetres. All dimensions and levels shall be verified on site before proceeding with works. Detailed site survey to be carried out to verify positions and level relationships with site features and ordnance survey. The architect must be notified of any discrepancy. Where building components are described in the specification as contractor designed, "construction" information relating to those components on this drawing represents design intent only

NOTES

THIS DRAWING TO BE USED FOR MATERIAL KEY ONLY IF PRINTED IN COLOUR.

FOR CONSTRUCTION

E	Construction Issue	RM	NM	11.12.08
D	General Amendments	NM	NM	23.04.08
C	Contractor's Proposal issue	NM	NM	05.02.08
B	Internal Finishes added	JR	NM	21.12.07
A	Preliminary Contractor's Proposal issue	RM	MF	20.12.07
-	FIRST ISSUE.	RM	MF	12.12.07
Rev	Description	By	Chkd	Date



GREAT NORTHERN HOTEL
ARCADE

Arcade Wall Finishes
Scope

G.A. Showing Part-Plan
of Proposed

Drawn RM	Checked MF	Date 20.11.07	Scale 1:50 @ A1
-------------	---------------	------------------	--------------------

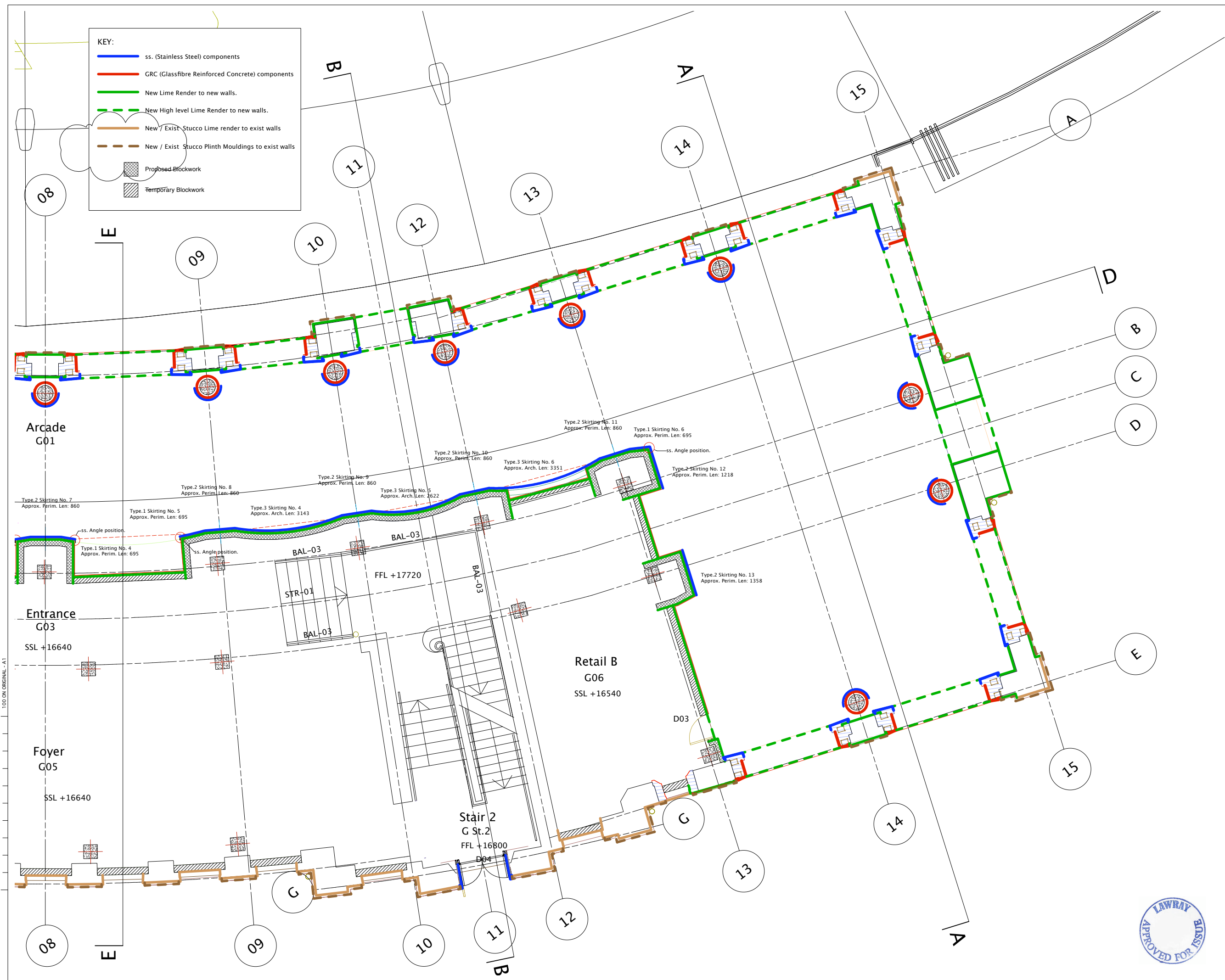
Drawing No. 212_04_812/1	Sheet 1 of 2	Rev. E
-----------------------------	--------------	-----------

lawray architects

Southbank House Black Prince Road London SE1 7SJ
tel 020 7138 3560 fax 020 7138 3567 mail@lawray.com

File reference: TITLE BLOCK.dwg





Do not scale from this drawing. Use figured dimensions only.
Figured dimensions are in millimetres.
All levels are in millimetres.
All dimensions and levels shall be verified on site before proceeding with works. Detailed site survey to be carried out to verify positions and level relationships with site features and ordnance survey. The architect must be notified of any discrepancy.
Where building components are described in the specification as contractor designed, "construction" information relating to those components on this drawing represents design intent only

THIS DRAWING TO BE USED FOR MATERIAL KEY ONLY IF PRINTED IN COLOUR.

FOR CONSTRUCTION

E	Construction Issue	RM	NM	11.12.08
D	General Amendments	NM	NM	23.04.08
C	Contractor's Proposal issue	NM	NM	05.02.08
B	Internal Finishes added	JR	NM	21.12.07
A	Preliminary Contractor's Proposal issue	RM	MF	20.12.07
-	FIRST ISSUE.	RM	MF	12.12.07
Rev	Description	By	Chkd	Date



GREAT NORTHERN HOTEL
ARCADE

Arcade Wall Finishes
Scope

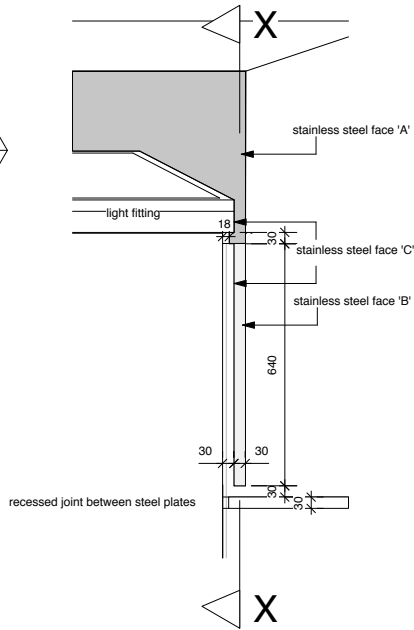
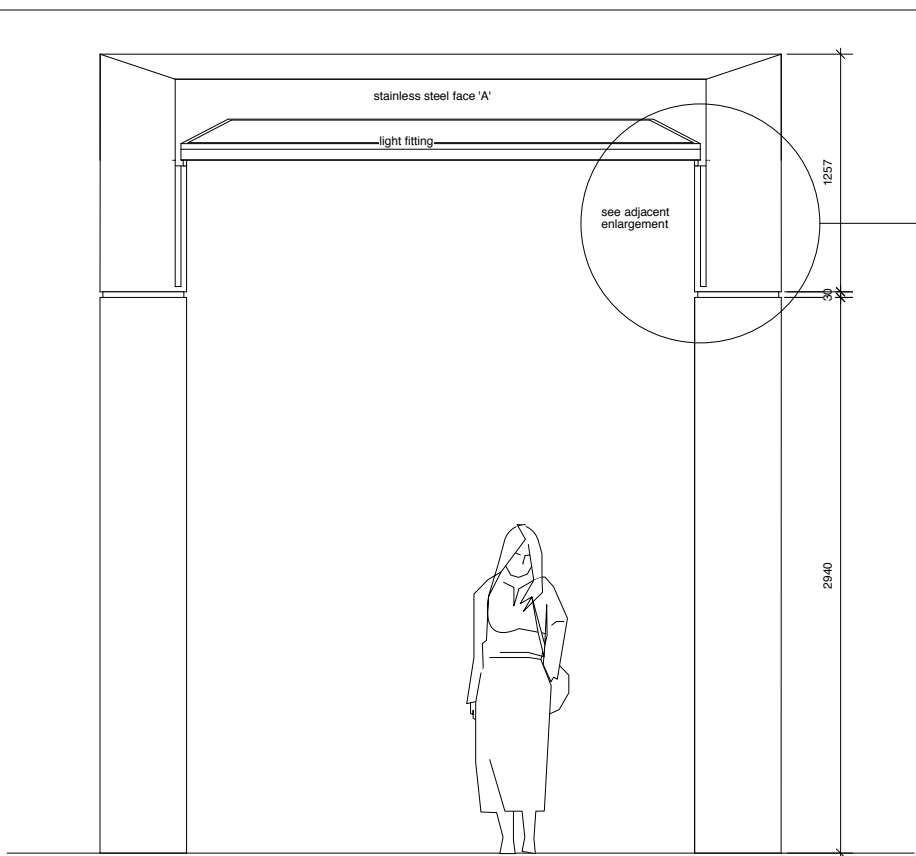
G.A. Showing Part-Plan
of Proposed

Drawn RM	Checked MF	Date 20.11.07	Scale 1:50 @ A1
Drawing No. 212_04_812/2 Sheet 2 of 2			Rev. E

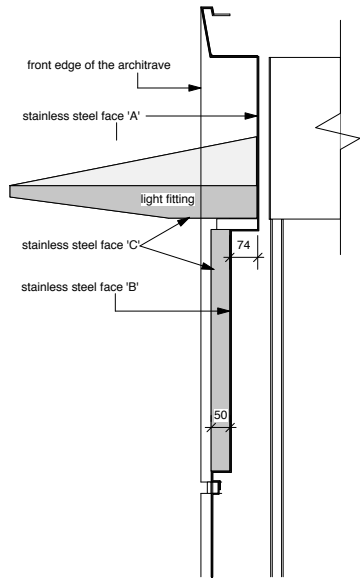


Southbank House Black Prince Road London SE1 7SJ
tel 020 7138 3560 fax 020 7138 3567 mail@lawray.com

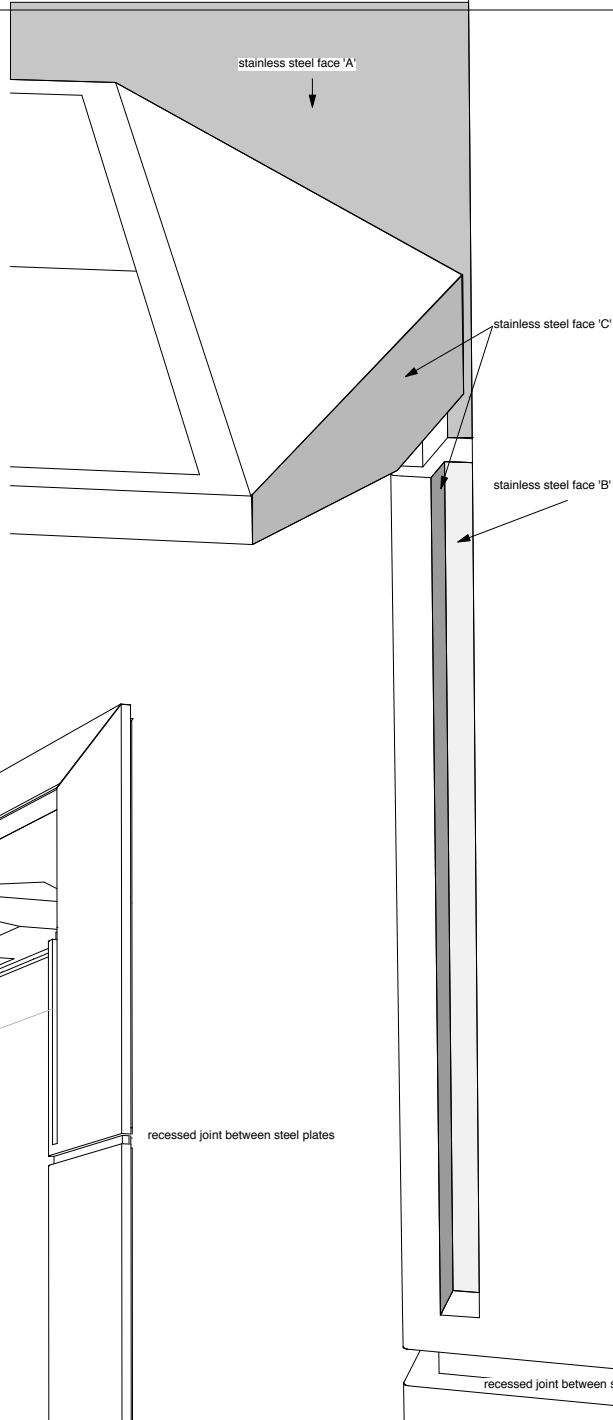
File reference: TITLE BLOCK.dwg



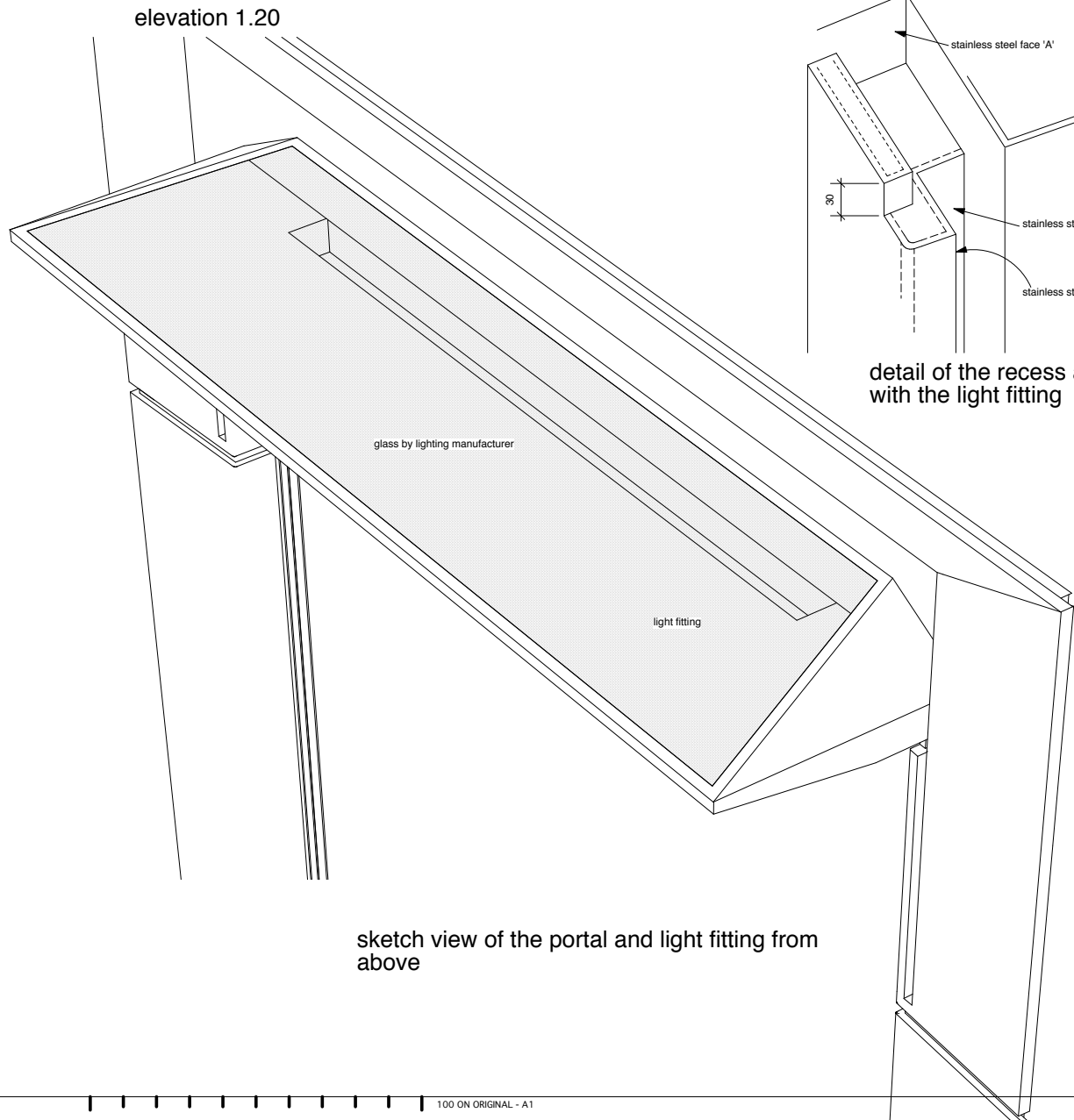
corner detail showing relationship with the light fitting



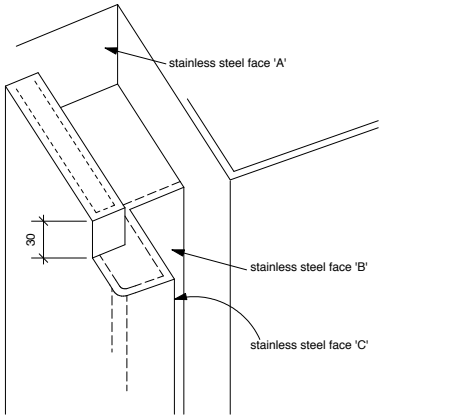
section X-X through the recess next to the light fitting



sketch view of the end of the light fitting and the recess in the stainless steel



sketch view of the portal and light fitting from above



detail of the recess at the junction with the light fitting



sketch view of the portal and light fitting at normal eye level

Do not scale from this drawing. Use figured dimensions only. Figured dimensions are in millimetres. All levels are in millimetres. All dimensions and levels shall be verified on site before proceeding with works. Detailed site survey to be carried out to verify positions and level relationships with site features and ordnance survey. The architect must be notified of any discrepancy. Where building components are described in the specification as contractor designed, "construction" information relating to those components on this drawing represents design intent only.

- NOTES
- Shutter Manufactured by : A & S Group: Alsecure Anti-Ram, Anti-Cut roller Shutter.
- Box:** SBK 400 end plates / caps with sliding head plate mechanism - powder coated
Aluminium box cover - powder coated RAL 9010 (White)
Somfy tubular motor drive unit complete with manual over-ride facility in case of power failure fixed to sliding head plate.
- Curtain:** Twin skin aluminium powder coated RAL 7031 (Blue Grey)
- Stainless Steel:** Sheet metal to be 3mm AISI grade 304 stainless steel ref: Granex M1A by Rimex Metals (UK): 020 8804 0633 supplied to works as pre-finished sheets with bead blasted / shot peened finish.

FOR CONSTRUCTION

Rev	Description	By	Chkd	Date
B	Construction issue	MF	NM	01.05.09
A	First Issue	MF	NM	19.03.09



WALLIS

GREAT NORTHERN HOTEL
ARCADE

PORTAL FRAME

PROFILES FOR SHEET METAL
STAINLESS STEEL

Drawn RM	Checked MF	Date 30.11.07	Scale 1:2 @ A1
-------------	---------------	------------------	-------------------

Drawing No. 212_04_502	Rev. B
---------------------------	-----------



lawray architects

Southbank House Black Prince Road London SE1 7SJ
tel 020 7138 3560 fax 020 7138 3567 mail@lawray.com

File reference: TITLE BLOCK.dwg