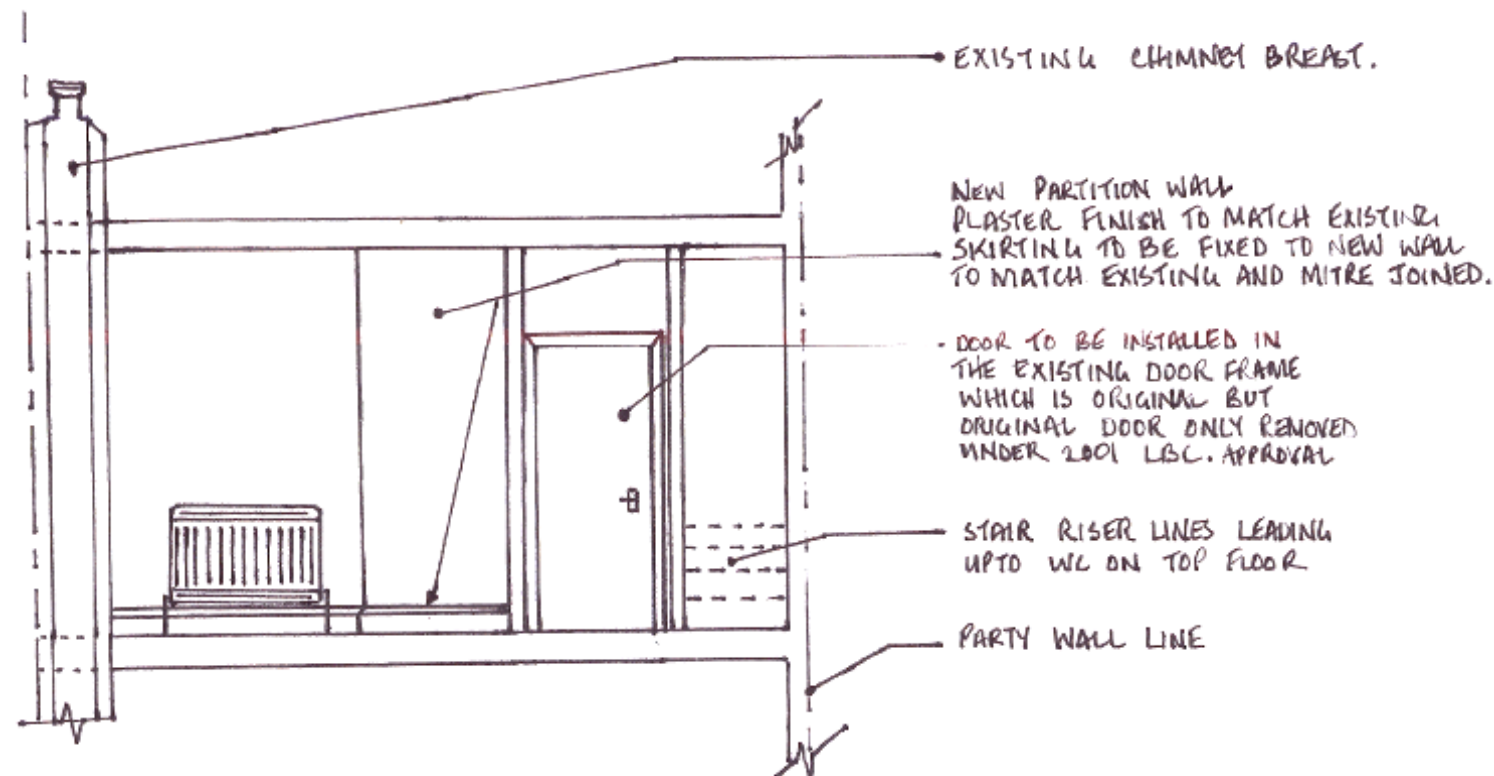
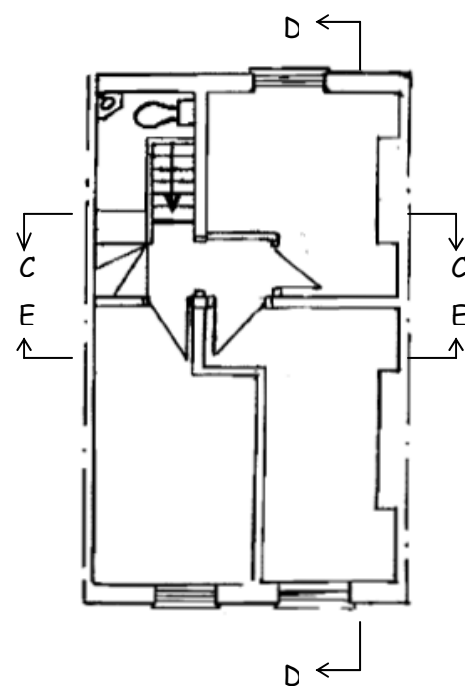


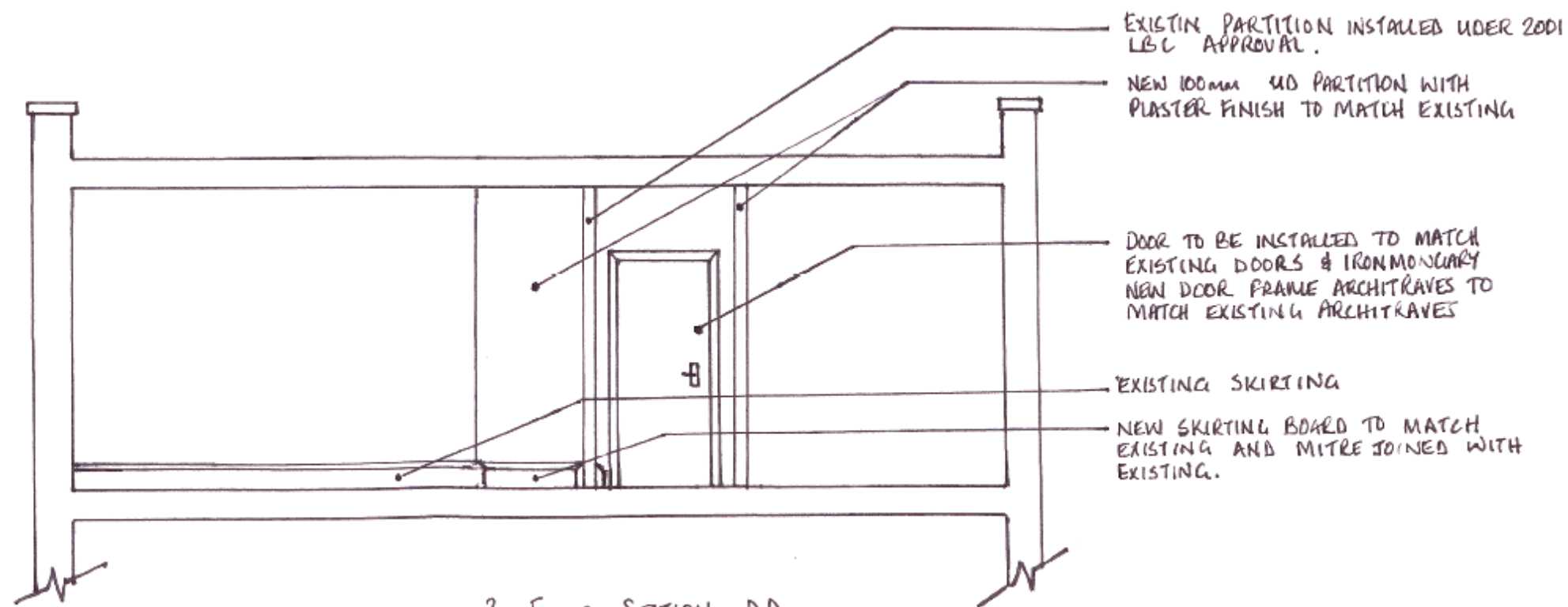
2ND FLOOR SECTION EE



2ND FLOOR SECTION CC



2ND FLOOR



2ND FLOOR SECTION DD

Notes:

- The only change proposed as can be seen is minor re-arrangement of partition on 2nd floor to bring the front left room up to a minimum HMO standard room size of 9m² as currently 0.8m² too small. This change will not involve any changes to the original features or finishes, as old door frame will remain in position and previously removed door will be re-instated. All finishes will match existing including skirting, architraves, doors and associated ironmongery.

Samshaan Project Management Ltd.
181 Hendon Way
Golders Green
London
NW2 1JJ
Tel: 020 8209 0781
Mobile: 07791 137 106

Project

64 ACTON STREET LONDON WC1X 9NB

Drawing Title

2nd Floor Only - Elevations & Sections

Scale

1:50 (A3 print)

Drawn By

Ash Hussain

Drg. No.

64/AC/PE/04

Rev.

Date:

July 2009