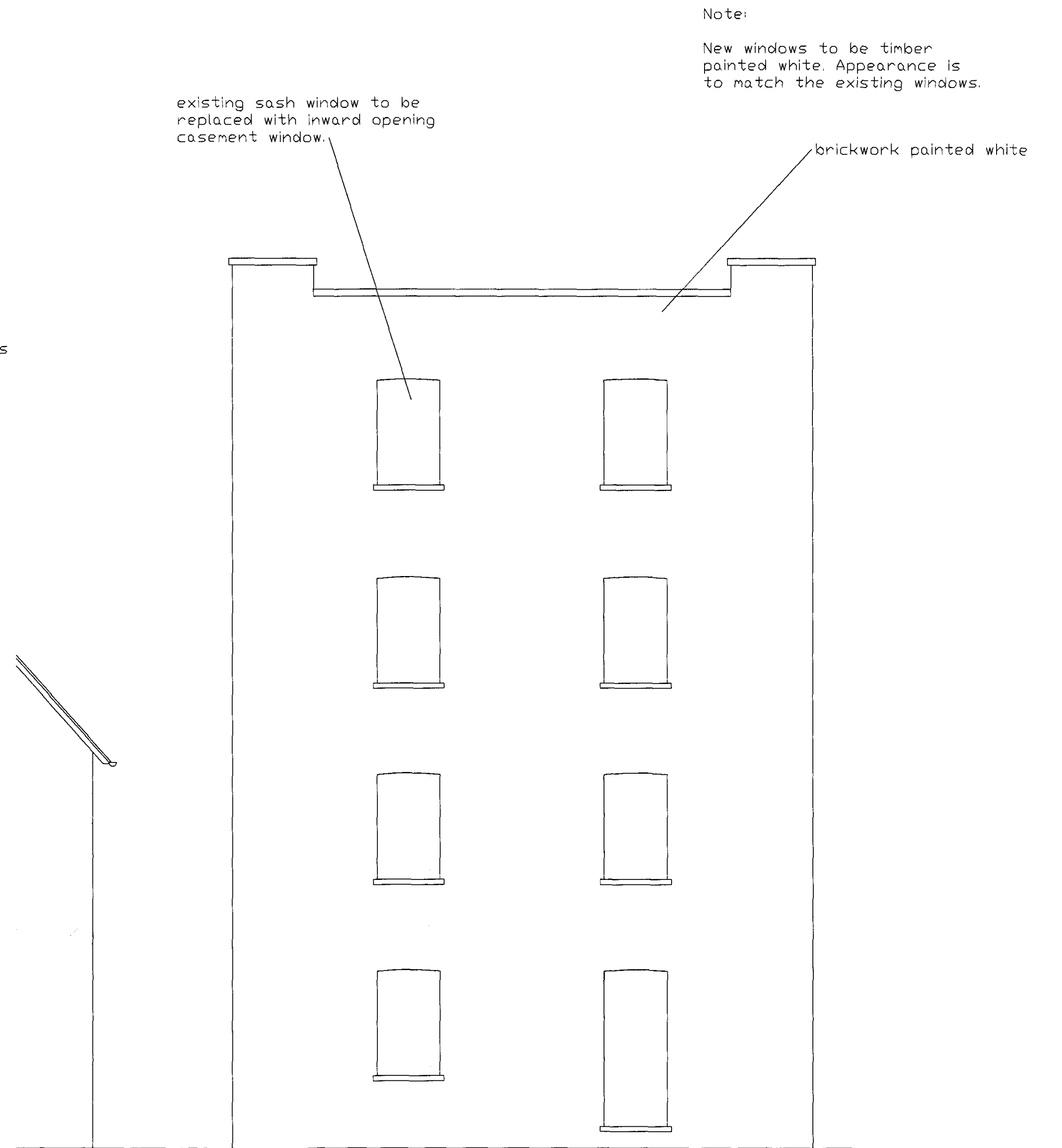


Proposed West Elev

Proposed Part South Elev



Proposed East Elev

Proposed Alterations to
88 Yale Court (3rd floor)
Honeybourne Road
NW6 1JH

Proposed Elevations

Date: June 2009
Scale: A1 @ 1:50

CAD Ref: 1638-04

Ross Laird

Ross Laird Limited
5 Lower King Street
Royston
Hertfordshire SG8 5AL

Telephone: 01763 249949
Facsimile: 01763 242912
email: rosslaird@btinternet.com
www.rosslaird.co.uk