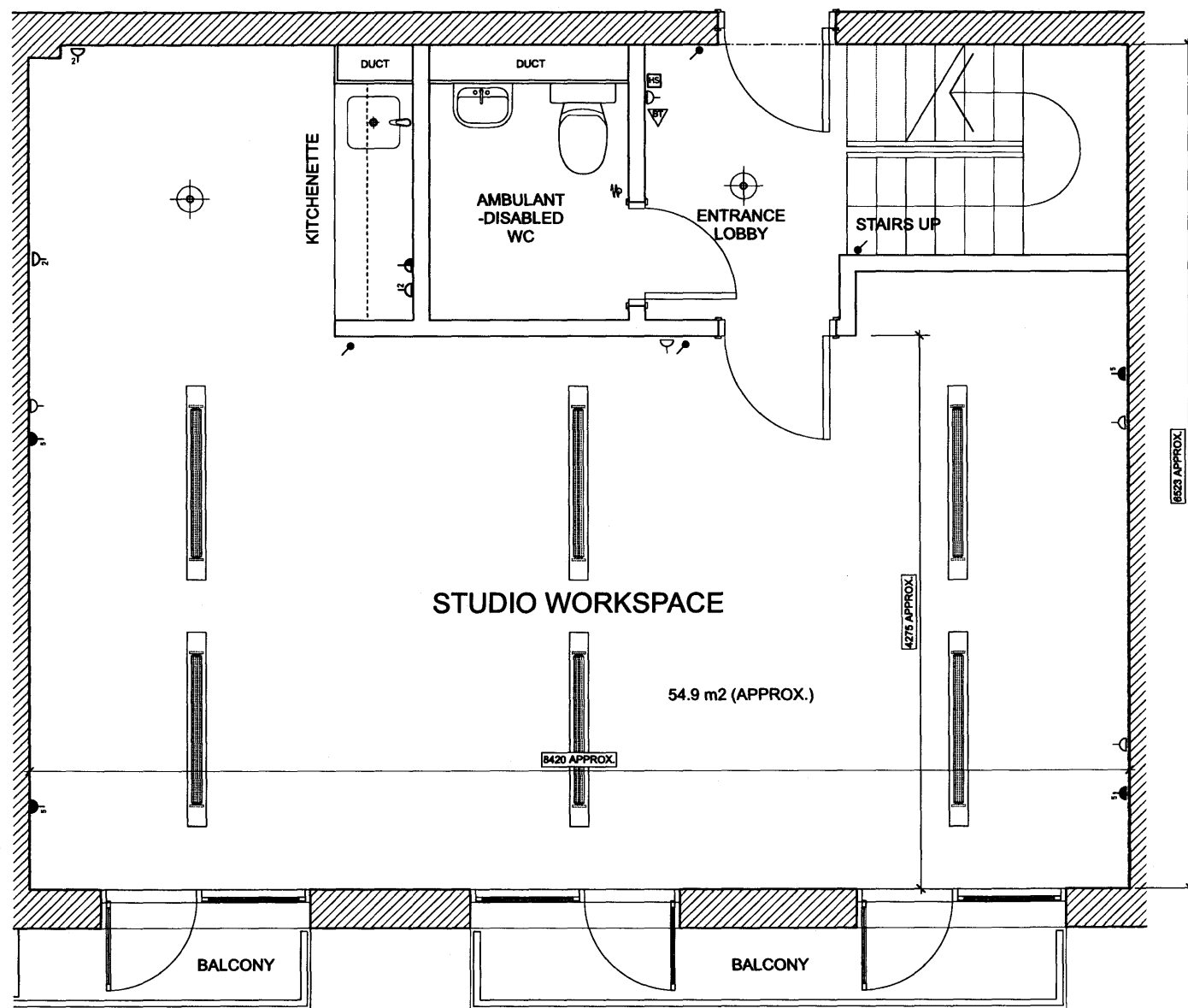


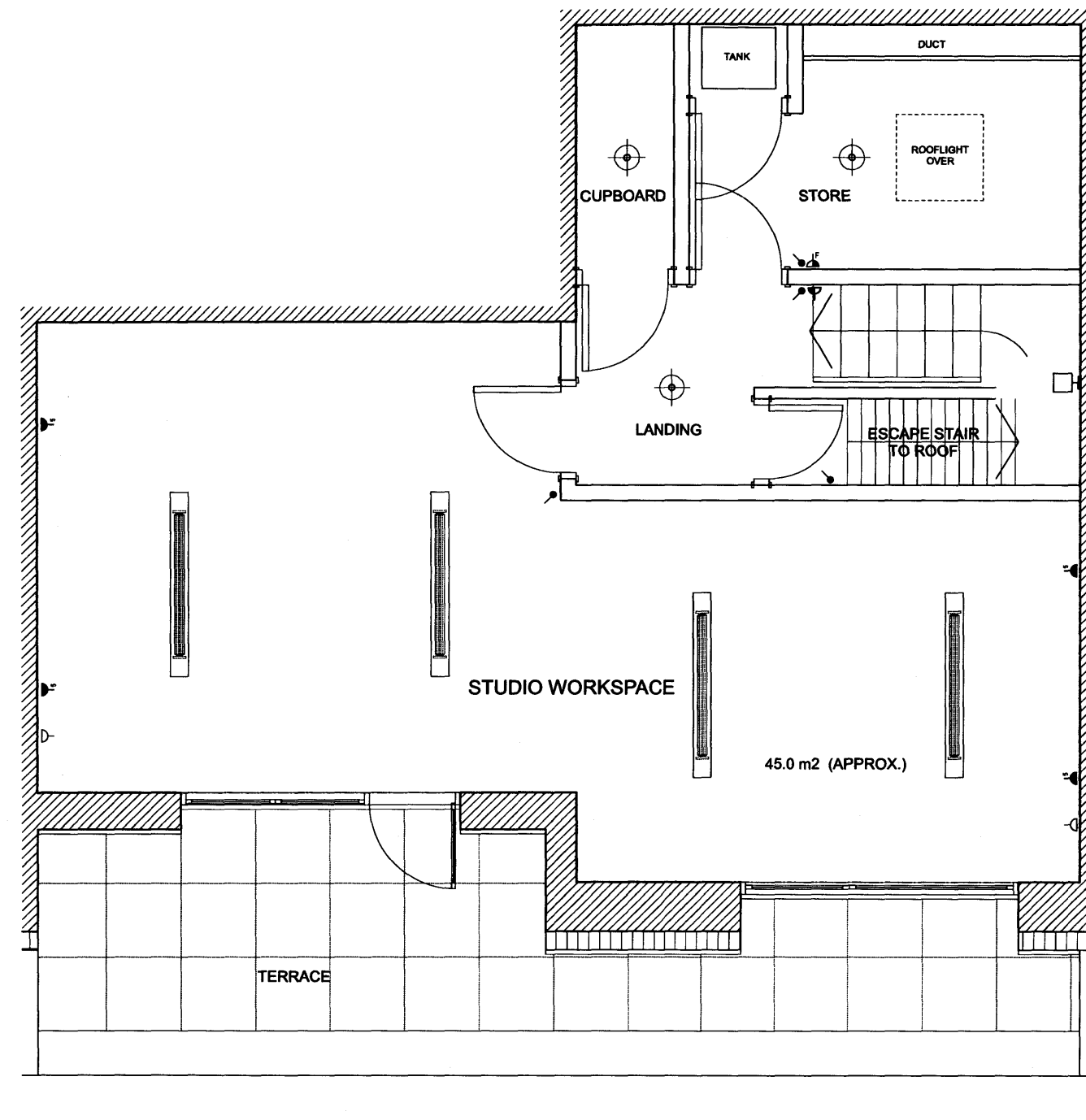
SCOPE OF WORKS (TYPICAL UNIT):

EXISTING SERVICED APARTMENT;
CONVERT TO WORKSPACE USE:

- STRIP OUT EXISTING BATHROOMS & KITCHENS;
- REMOVE EXISTING STORAGE HEATER AIR-SYSTEM;
- REMOVE ALL EXISTING FINISHES & FITTINGS;
- REMOVE REDUNDANT SERVICES
- REFURBISH / RENEW ENTRANCE DOOR;
- NEW AMBULANT-DISABLED WC AT ENTRANCE LEVEL;
- NEW KITCHENETTE ADJACENT TO SERVICE RISER;
- NEW ELECTRIC RADIATORS
- NEW FLUORESCENT LIGHTING
- NEW FLOOR FINISHES & DECORATIONS THROUGHOUT;
- REFURBISH EXISTING GLAZING
- REFURBISH FIRE EXIT ROUTE STRUCTURES



1 LOWER / ENTRANCE LEVEL PLAN
401 Scale: 1:25



2 UPPER LEVEL PLAN
401 Scale: 1:25

TOTAL INTERNAL AREA (APPROX.):
100 m2 / 1075 sq ft

15 JUN 2009

GENERAL NOTES:
Do not scale from this drawing.
Check drawing on receipt and immediately report any discrepancies to the Architect.
Verify all dimensions and levels on site prior to construction.
The contents of this drawing are Stiff + Trevillion Architects LLP copyright and shall not be re-used without their written permission.

No. Date Revision Notes



0 0.5 1.0 1.5 2.0 2.5 M

PLANNING

Stiff + Trevillion

Stiff + Trevillion Architects LLP
16 Woodfield Road
London W9 2BE
T +44(0)20 8940 5550
F +44(0)20 8949 8668
mail@stiffandtrevillion.com
www.stiffandtrevillion.com

| | | |
|--|----------------|------------|
| Project 1 UNIVERSITY STREET LONDON WC1E 6JQ | | |
| Drawing TYPICAL UNIT AS PROPOSED | | |
| Project No 2995 | Drawing No 411 | Revision - |
| Scale: 1:25 @ A1 | Date MAY 2009 | Revised - |