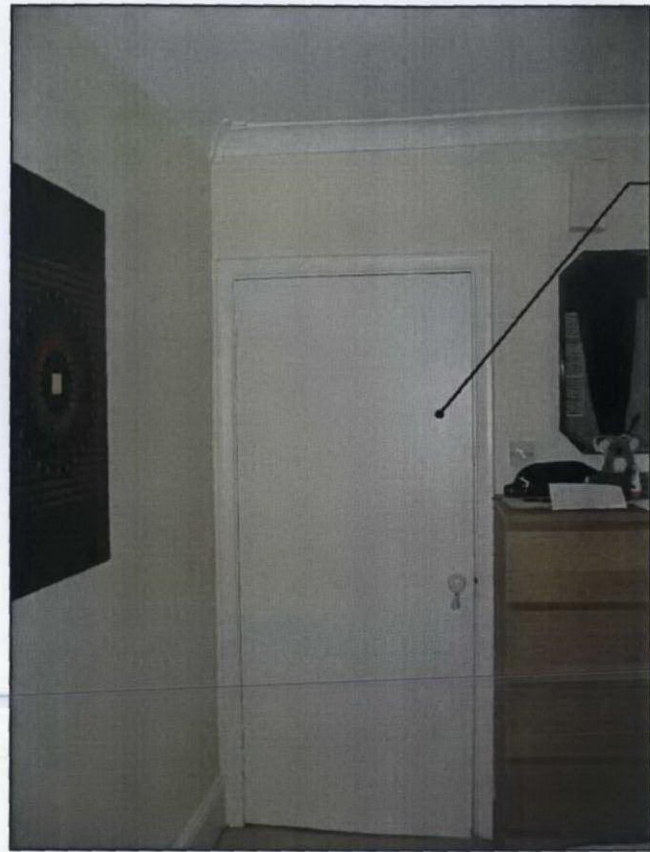


R20CONWAYSTREET.DWG



07 EXISTING INTERIOR DOORS



08 EXISTING CORRIDOR FINISHING



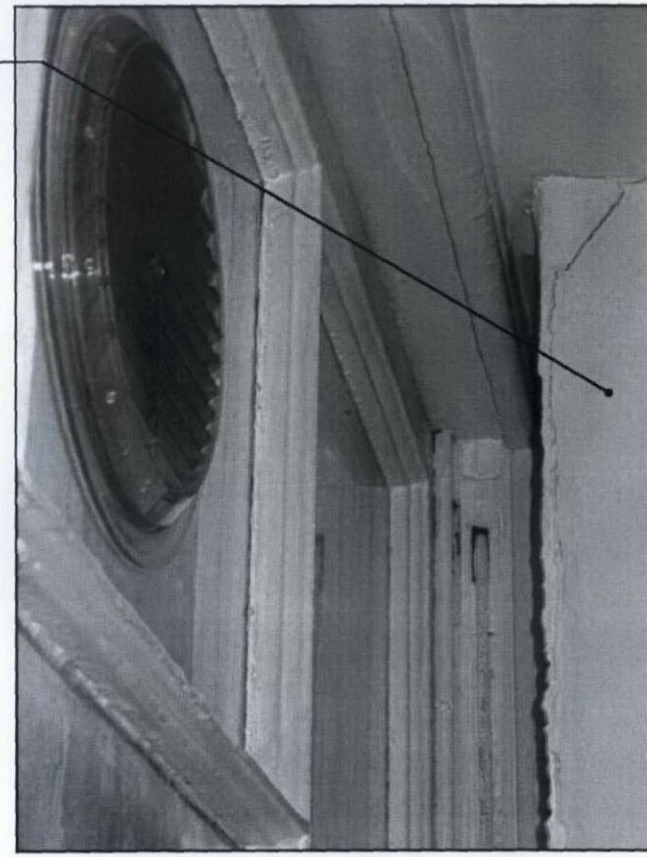
09 EXISTING HOT WATER HEATER



10 EXISTING BATHROOM



11 EXISTING KITCHEN



12 EXISTING WALL OVERLAP AT WINDOW

SECOND FLOOR FLAT
20 CONWAY STREET
LONDON W1T 6BE

REFERENCE
PHOTOS
INTERIOR
EXISTING-CONDITIONS
DRAWING TITLE

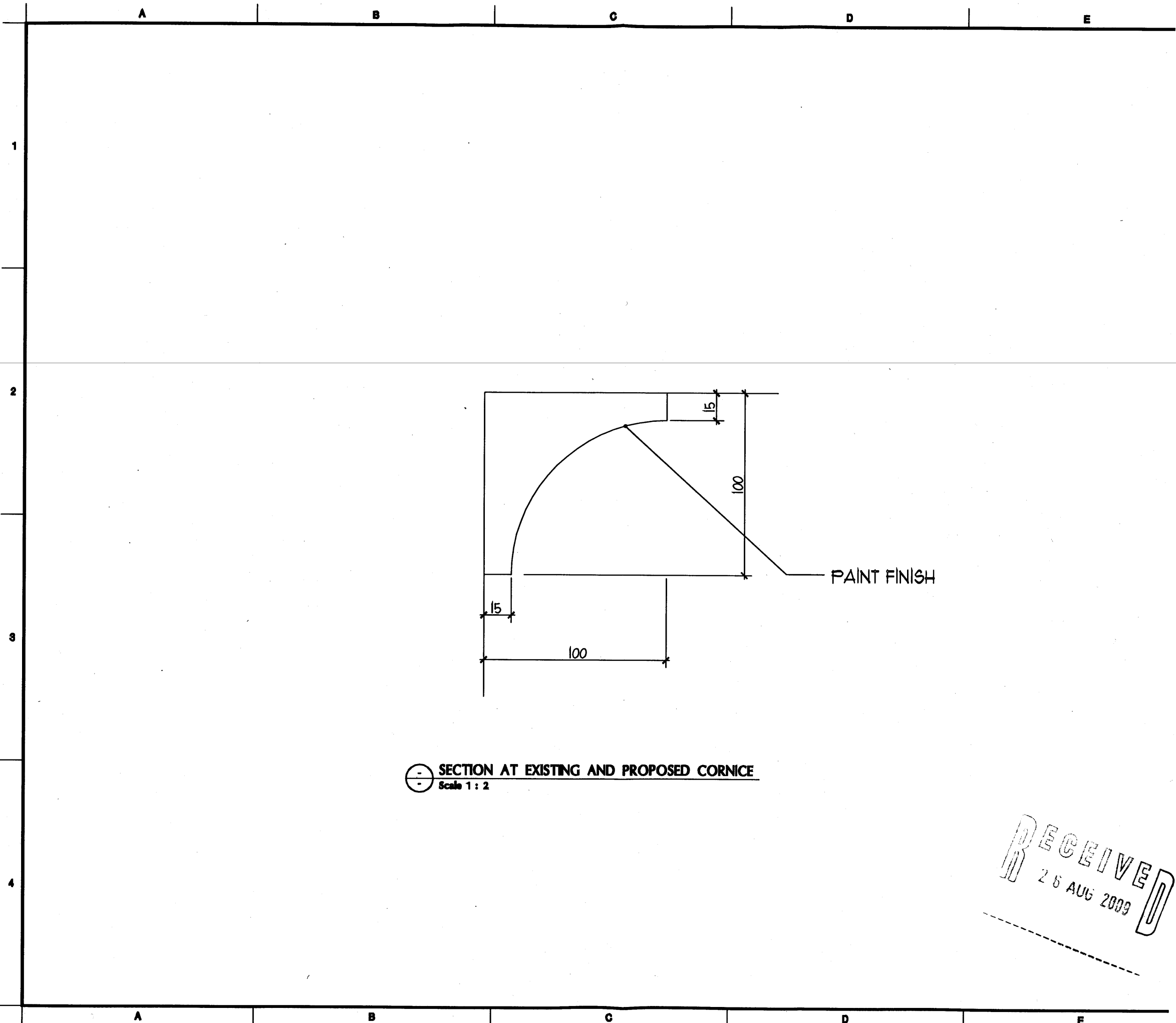
REVISIONS DATE

This drawing is for information only to be used by the contractors on a general arrangement of labor conditions. It has been made from available information, however measurements are to be verified on project site. This drawing must be verified and approved prior to final detailing and fabrication. It is only to be used for the project and after specifically identified herein and is not to be used on any other project. It is to be returned upon request.

APPROVED ADM-NRH
DRAWN BY NH
DATE 3 AUGUST 2009
SCALE N.T.S.

SHEET No.
**R
2**
PROJECT No.
W1T6BE

D20CONWAYSTREET.DWG



SECTION AT EXISTING AND PROPOSED CORNICE
 Scale 1 : 2

SECOND FLOOR FLAT
 20 CONWAY STREET
 LONDON W1T 6BE

CORNICE
 SECTION
 DETAIL

DRAWING TITLE

REVISIONS DATE

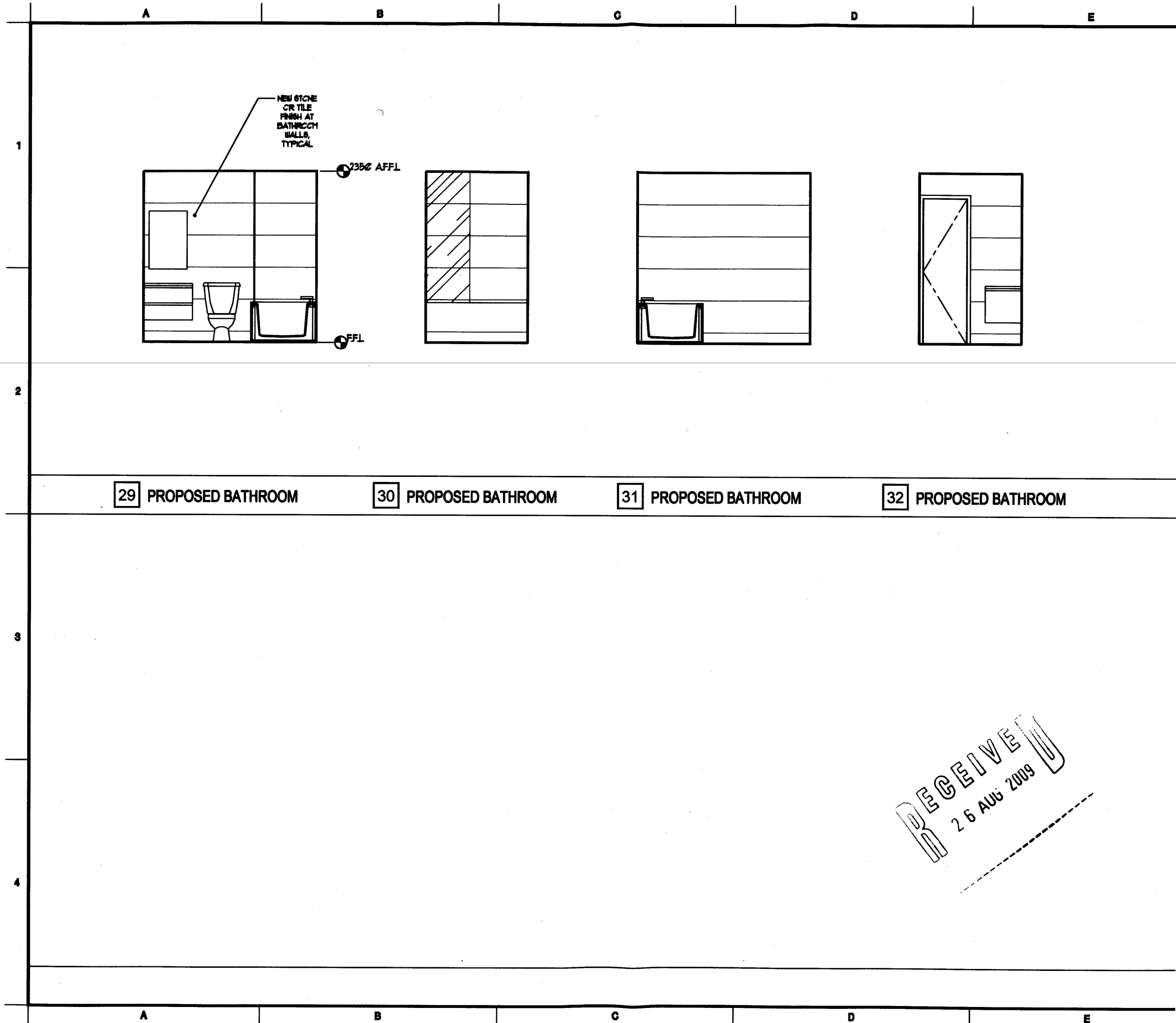
This drawing is for information only to be used by the contractor as a general overview of interior conditions. It has been made from available information, however measurements are to be verified on project site. This drawing must be verified and approved prior to that detailing and fabrication. It is only to be used for the project and site specifically identified herein and is not to be used on any other project. It is to be returned upon request.

RECEIVED
 26 AUG 2009

APPROVED ADM-NRH
 DRAWN BY NH
 DATE 26 AUGUST 2009
 SCALE 1:2

SHEET No.
D3
 PROJECT No.
 W1T6BE

IE20CONWAYSTREET.DWG



29 PROPOSED BATHROOM

30 PROPOSED BATHROOM

31 PROPOSED BATHROOM

32 PROPOSED BATHROOM

SECOND FLOOR FLAT
 20 CONWAY STREET
 LONDON W1T 6BE

INTERIOR
 BATHROOM
 ELEVATIONS
 PROPOSED

DRAWING TITLE

REVISIONS	DATE

This drawing is for information only to be used by the contractor as a general arrangement of interior conditions. It has been made from available information, however measurements are to be verified on project site. This drawing must be verified and approved prior to final detailing and fabrication. It is only to be used for the project and all specifically identified items and is not to be used on any other project. It is to be returned upon request.

APPROVED ADM-NRH

DRAWN BY NH

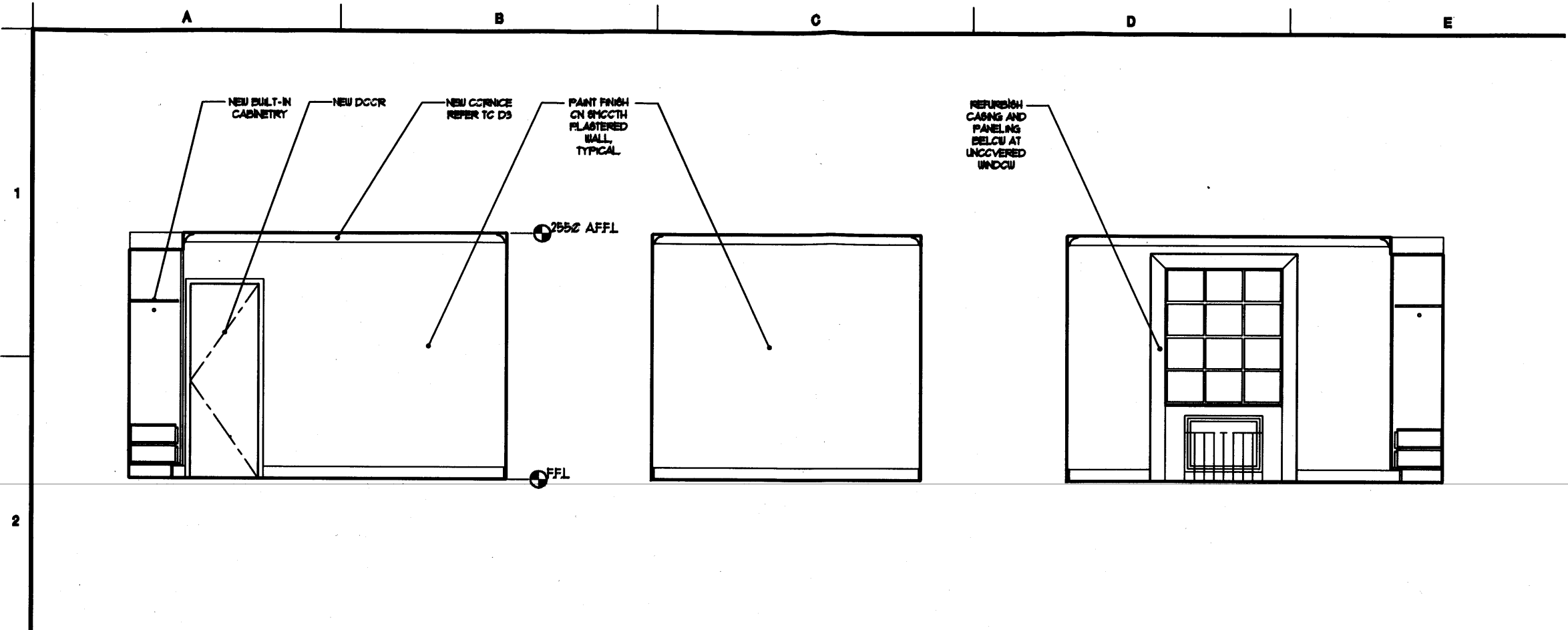
DATE 26 AUGUST 2009

SCALE 1:50

SHEET No.
IE
7
 PROJECT No.
W1T6BE

RECEIVED
 26 AUG 2009

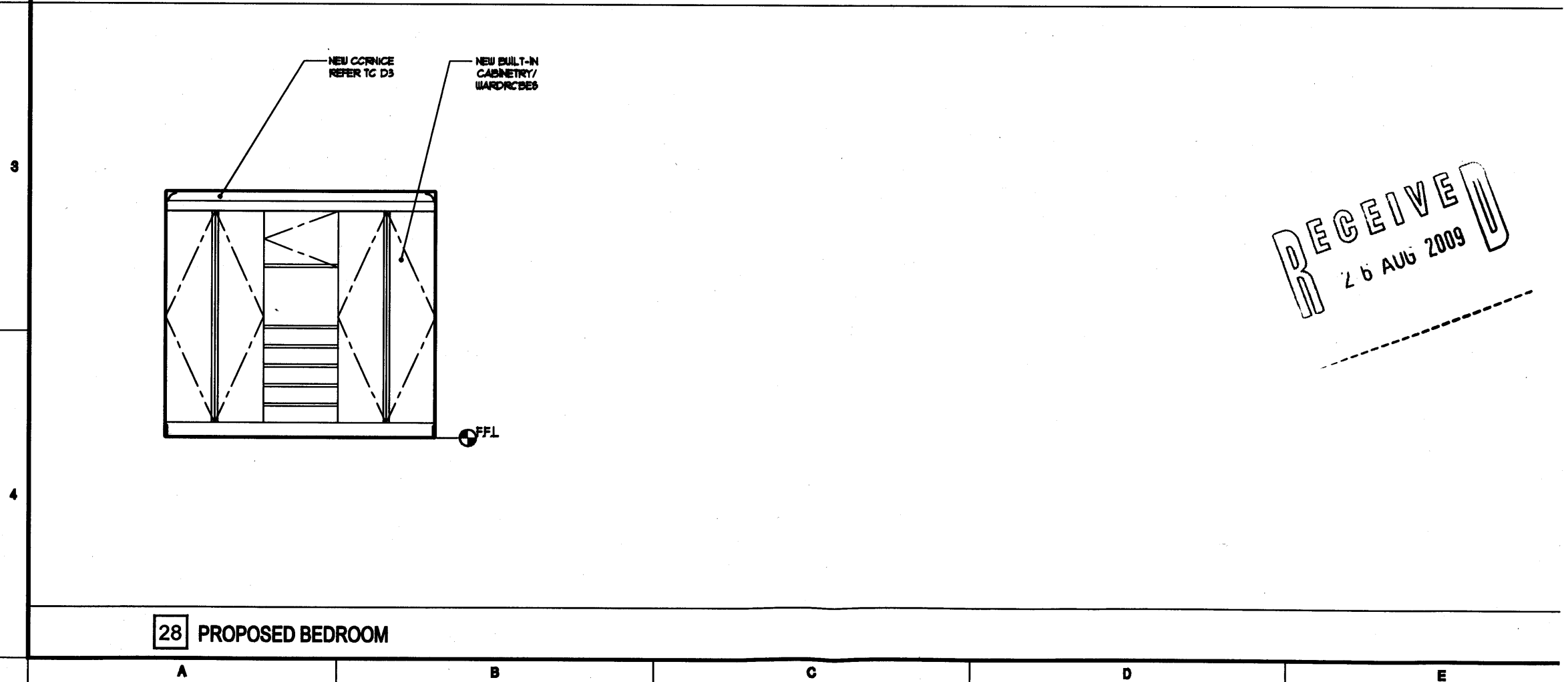
IE20CONWAYSTREET.DWG



25 PROPOSED BEDROOM

26 PROPOSED BEDROOM

27 PROPOSED BEDROOM



28 PROPOSED BEDROOM

SECOND FLOOR FLAT
 20 CONWAY STREET
 LONDON W1T 6BE

INTERIOR
 BEDROOM
 ELEVATIONS
 PROPOSED

DRAWING TITLE

RECEIVED
 26 AUG 2009

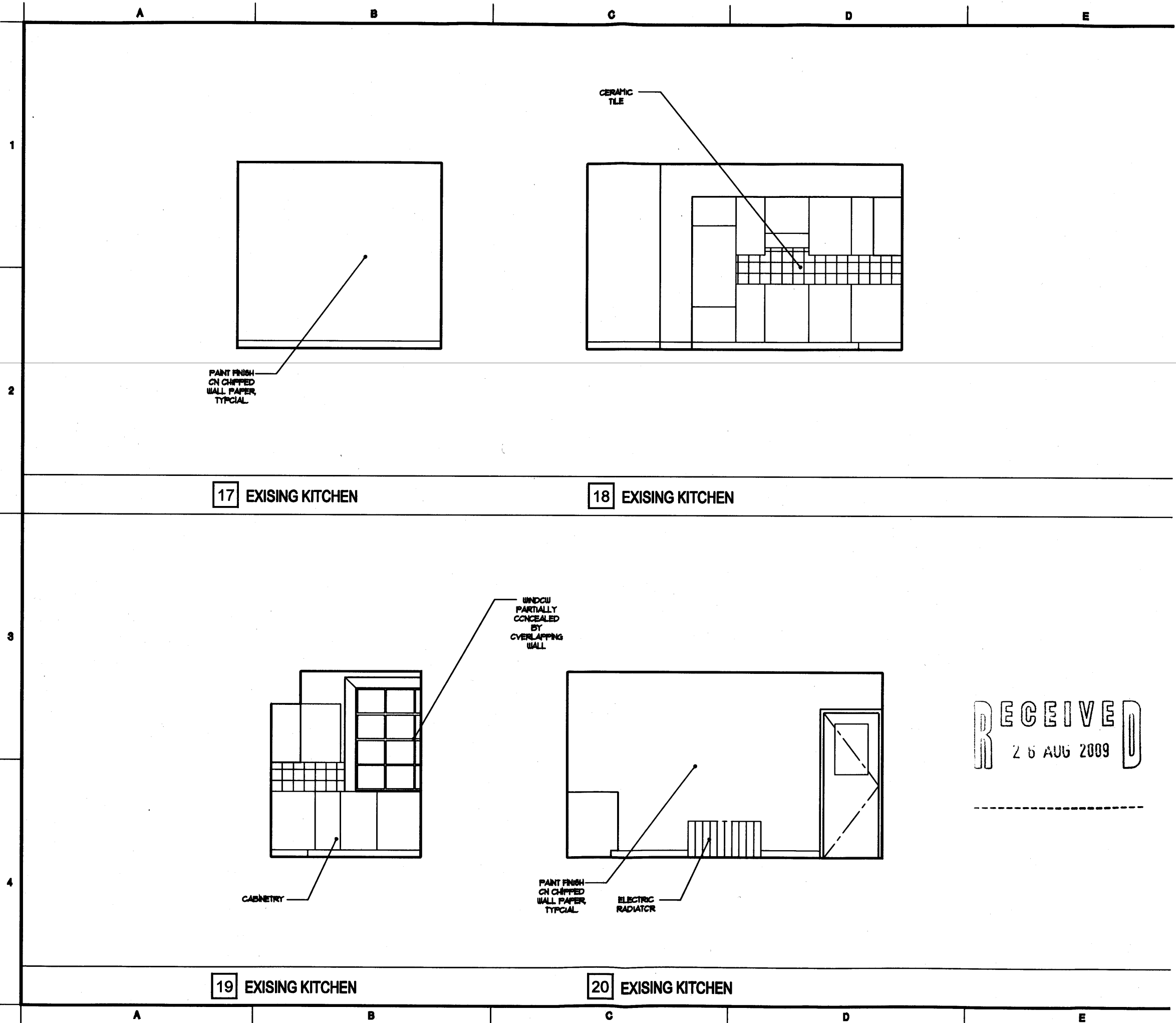
REVISIONS DATE

This drawing is for information only to be used by the contractor as a general arrangement of interior conditions. It has been made from available information, however measurements are to be verified on project site. This drawing must be verified and approved prior to final detailing and fabrication. It is only to be used for the project and its specifically identified parts and is not to be used on any other project. It is to be returned upon request.

APPROVED ADM-NRH
 DRAWN BY NH
 DATE 26 AUGUST 2009
 SCALE 1:50

SHEET No.
 IE
 6
 PROJECT No.
 W1T6BE

IE20CONWAYSTREET.DWG



17 EXISING KITCHEN

18 EXISING KITCHEN

19 EXISING KITCHEN

20 EXISING KITCHEN

SECOND FLOOR FLAT
 20 CONWAY STREET
 LONDON W1T 6BE

INTERIOR
 KITCHEN
 ELEVATIONS
 EXISTING

DRAWING TITLE

RECEIVED
 26 AUG 2009

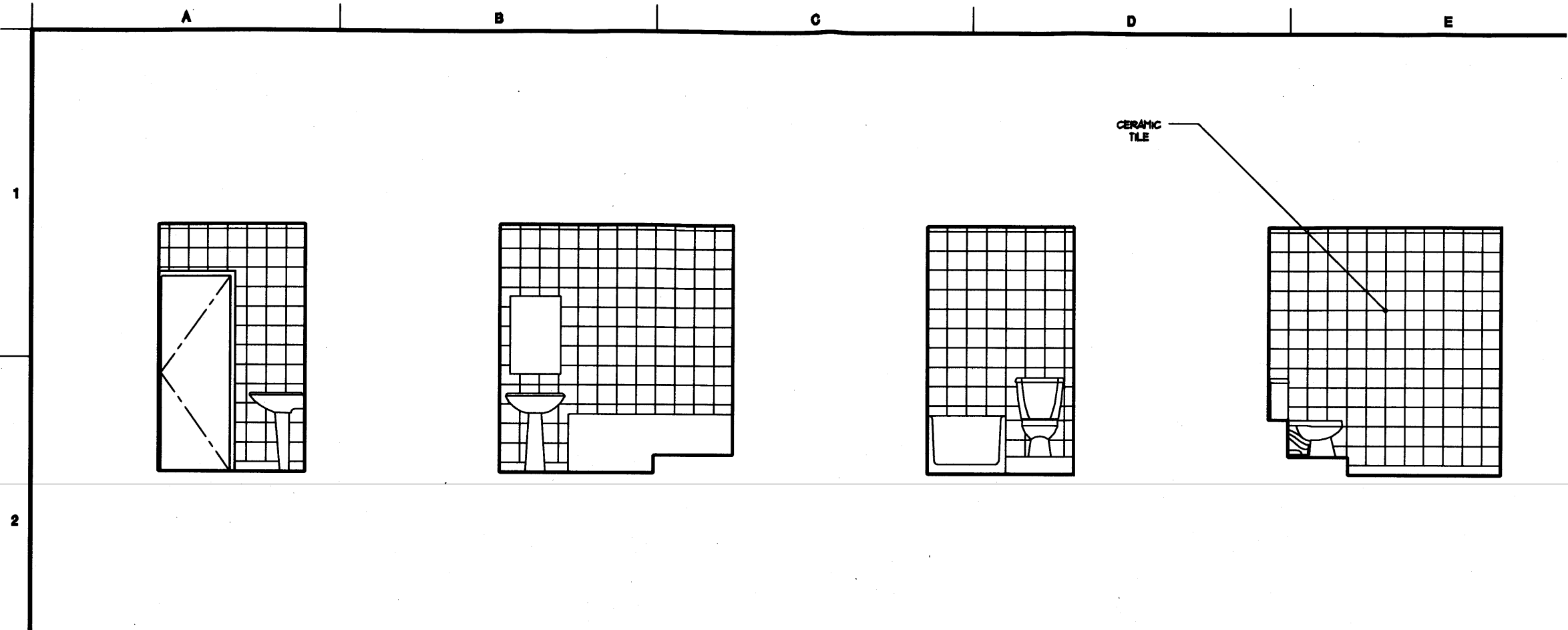
REVISIONS	DATE

This drawing is for information only to be used by the contractor as a general arrangement of labor conditions. It has been made from available information, however measurements are to be verified on project site. This drawing must be verified and approved prior to final detailing and fabrication. It is only to be used for the project and its specifically identified parts and is not to be used on any other project. It is to be returned upon request.

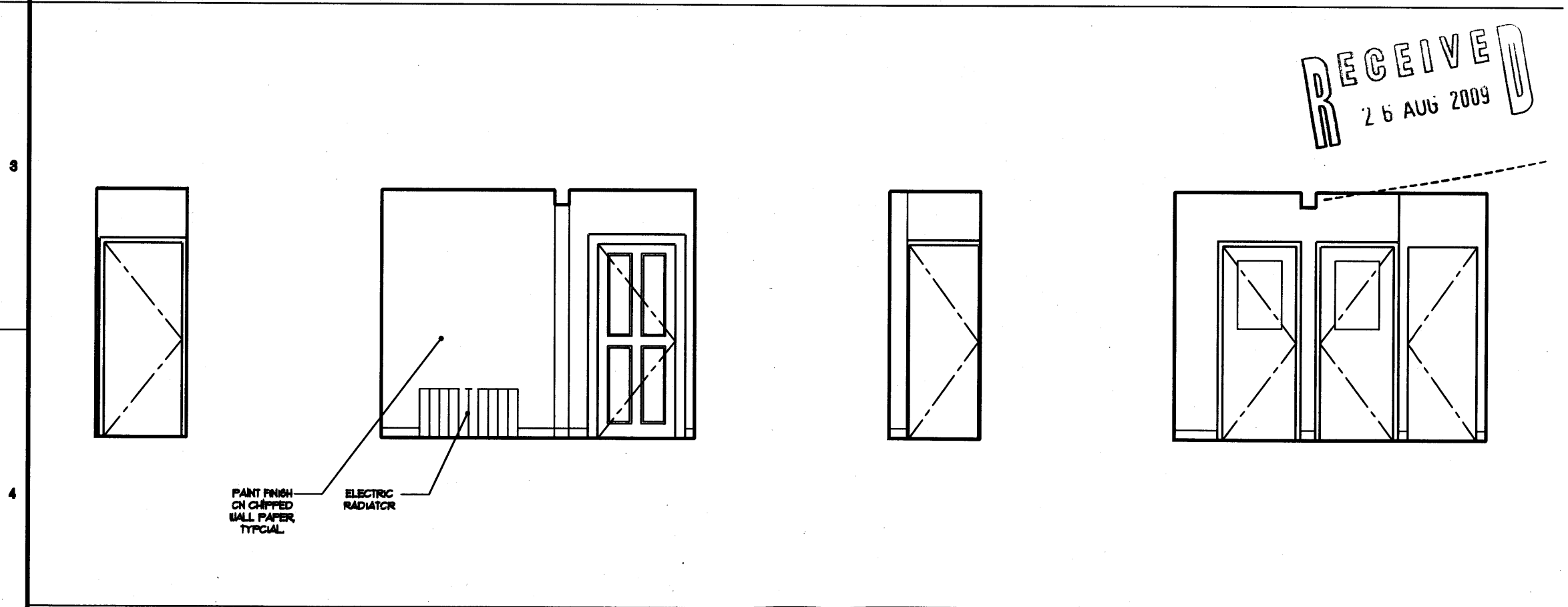
APPROVED ADM-NRH
 DRAWN BY NH
 DATE 26 AUGUST 2009
 SCALE 1:50

SHEET No.
IE 4
 PROJECT No.
W1T6BE

IE20CONWAYSTREET.DWG



09 EXISTING BATHROOM 10 EXISTING BATHROOM 11 EXISTING BATHROOM 12 EXISTING BATHROOM



13 EXISTING HALL 14 EXISTING HALL 15 EXISTING HALL 16 EXISTING HALL

SECOND FLOOR FLAT
20 CONWAY STREET
LONDON W1T 6BE

INTERIOR
HALL/BATHROOM
ELEVATIONS
EXISTING

DRAWING TITLE

REVISIONS DATE

This drawing is for information only to be used by the contractor as a general arrangement of labor conditions. It has been made from available information, however measurements are to be verified on project site. This drawing must be verified and approved prior to final detailing and fabrication. It is only to be used for the project and its specifically identified parts and is not to be used on any other project. It is to be returned upon request.

APPROVED ADM-NRH

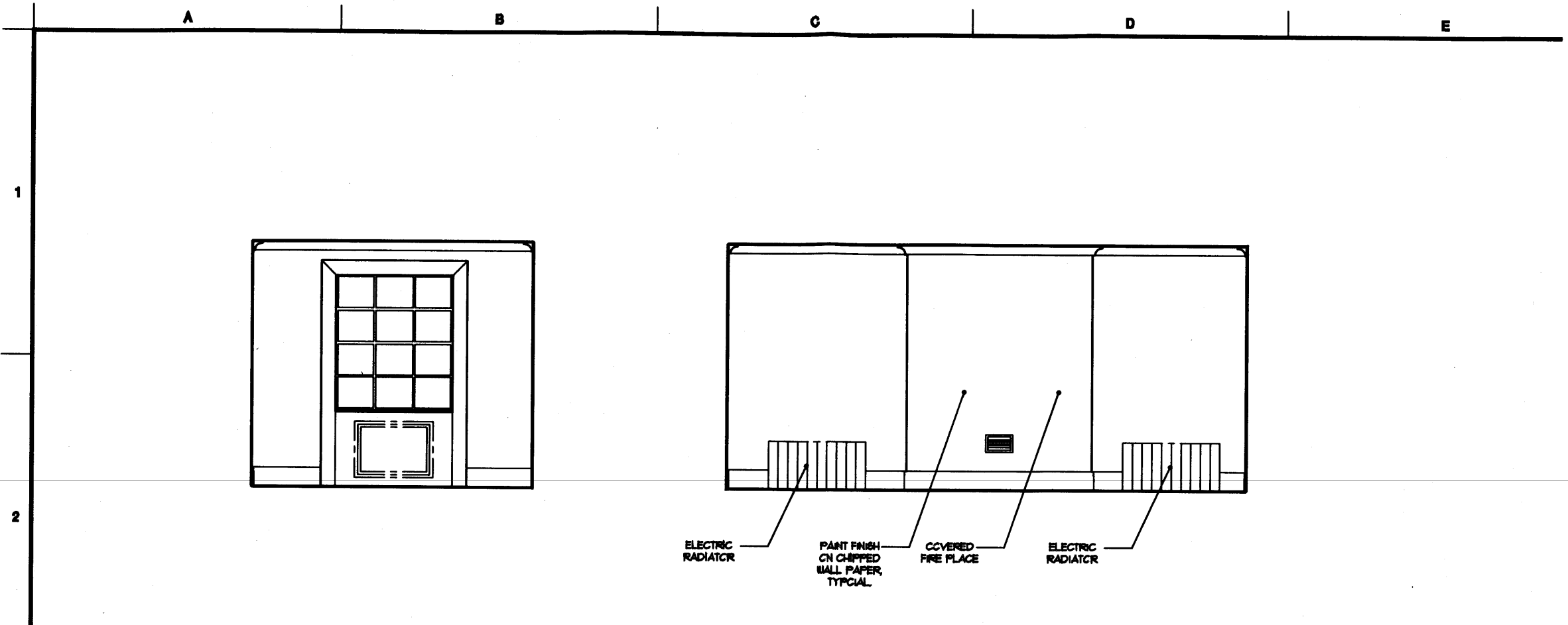
DRAWN BY NH

DATE 26 AUGUST 2009

SCALE 1:50

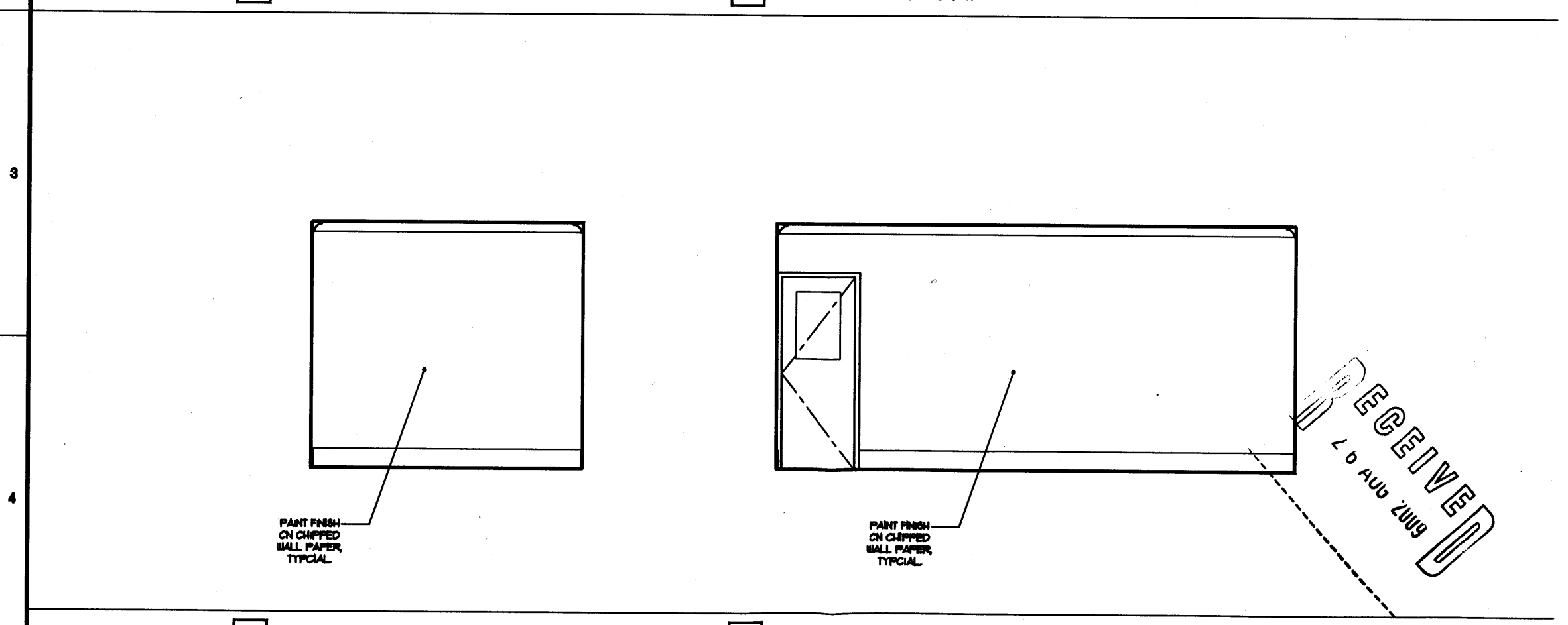
SHEET No.
IE
3
PROJECT No.
W1T6BE

IE20CONWAYSTREET.DWG



05 EXISTING LIVING ROOM

06 EXISTING LIVING ROOM



07 EXISTING LIVING ROOM

08 EXISTING LIVING ROOM

SECOND FLOOR FLAT
20 CONWAY STREET
LONDON W1T 6BE

INTERIOR
LIVING/DINING
ELEVATIONS
EXISTING

DRAWING TITLE

REVISIONS DATE

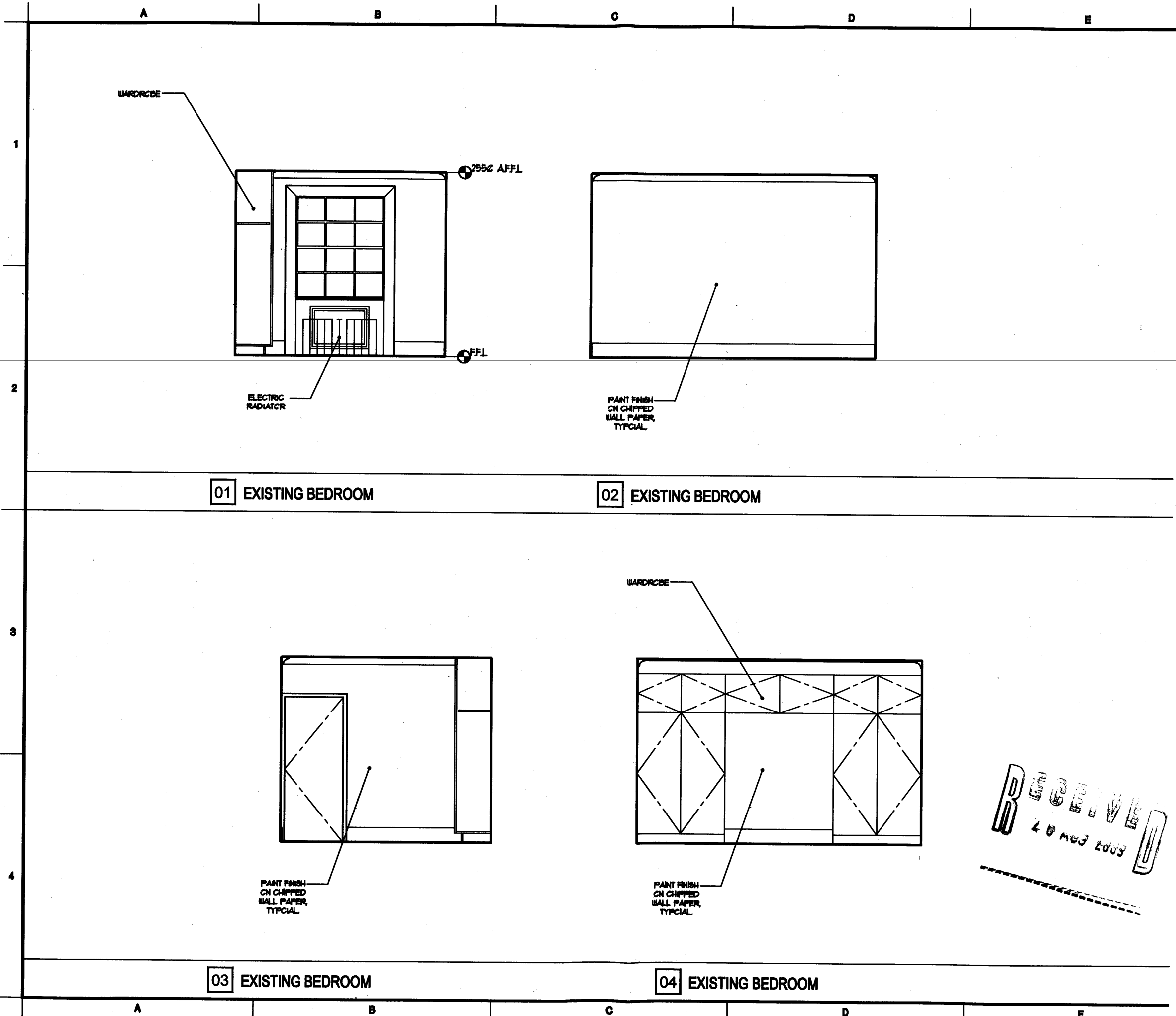
This drawing is for information only to be used by the contractor as a general arrangement of interior conditions. It has been made from available information, however measurements are to be verified on project site. This drawing must be verified and approved prior to final detailing and fabrication. It is only to be used for the project and its specifically identified items and is not to be used on any other project. It is to be returned upon request.

RECEIVED
607 09 07
7 0 AUG 2009

APPROVED ADM-NRH
DRAWN BY NH
DATE 26 AUGUST 2009
SCALE 1:50

SHEET No.
**IE
2**
PROJECT No.
W1T6BE

IE20CONWAYSTREET.DWG



SECOND FLOOR FLAT
 20 CONWAY STREET
 LONDON W1T 6BE

INTERIOR
 BEDROOM
 ELEVATIONS
 EXISTING

DRAWING TITLE

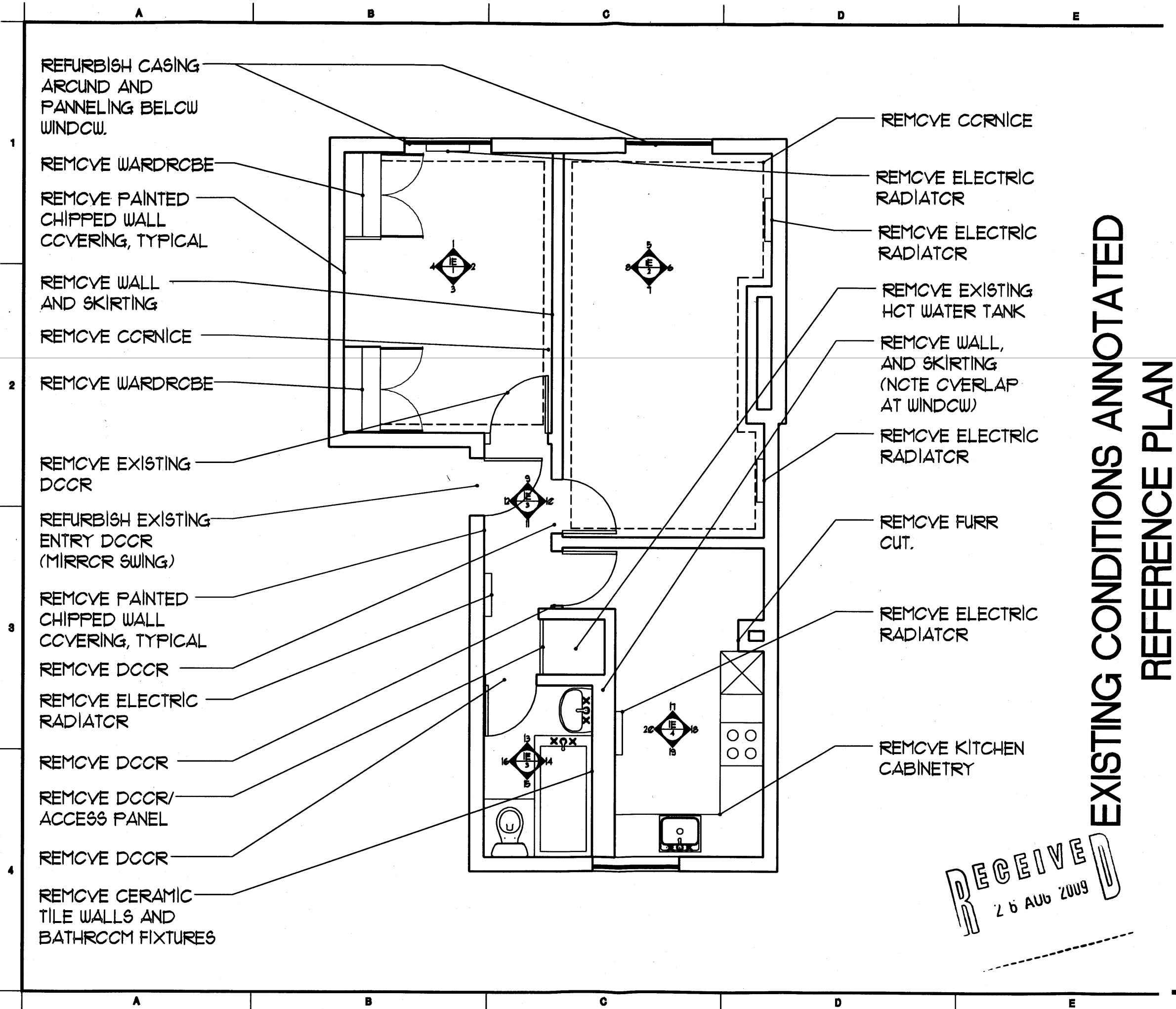
REVISIONS DATE
 This drawing is for information only to be used by the contractor as a general arrangement of interior conditions. It has been made from available information, however measurements are to be verified on project site. This drawing must be verified and approved prior to final detailing and construction.
 It is not to be used for the project and all quantities identified herein and is not to be used on any other project. It is to be returned upon request.

RECEIVED
 20 AUG 2009

APPROVED ADM-NRH
 DRAWN BY NH
 DATE 26 AUGUST 2009
 SCALE 1:50

SHEET No.
 IE
 1
 PROJECT No.
 W1T6BE

P20CONWAYSTREET.DWG



SECOND FLOOR FLAT
 20 CONWAY STREET
 LONDON W1T 6BE

**EXISTING CONDITIONS ANNOTATED
 REFERENCE PLAN**

EXISTING
 ANNOTATED REFERENCE
 PLAN
 DRAWING TITLE

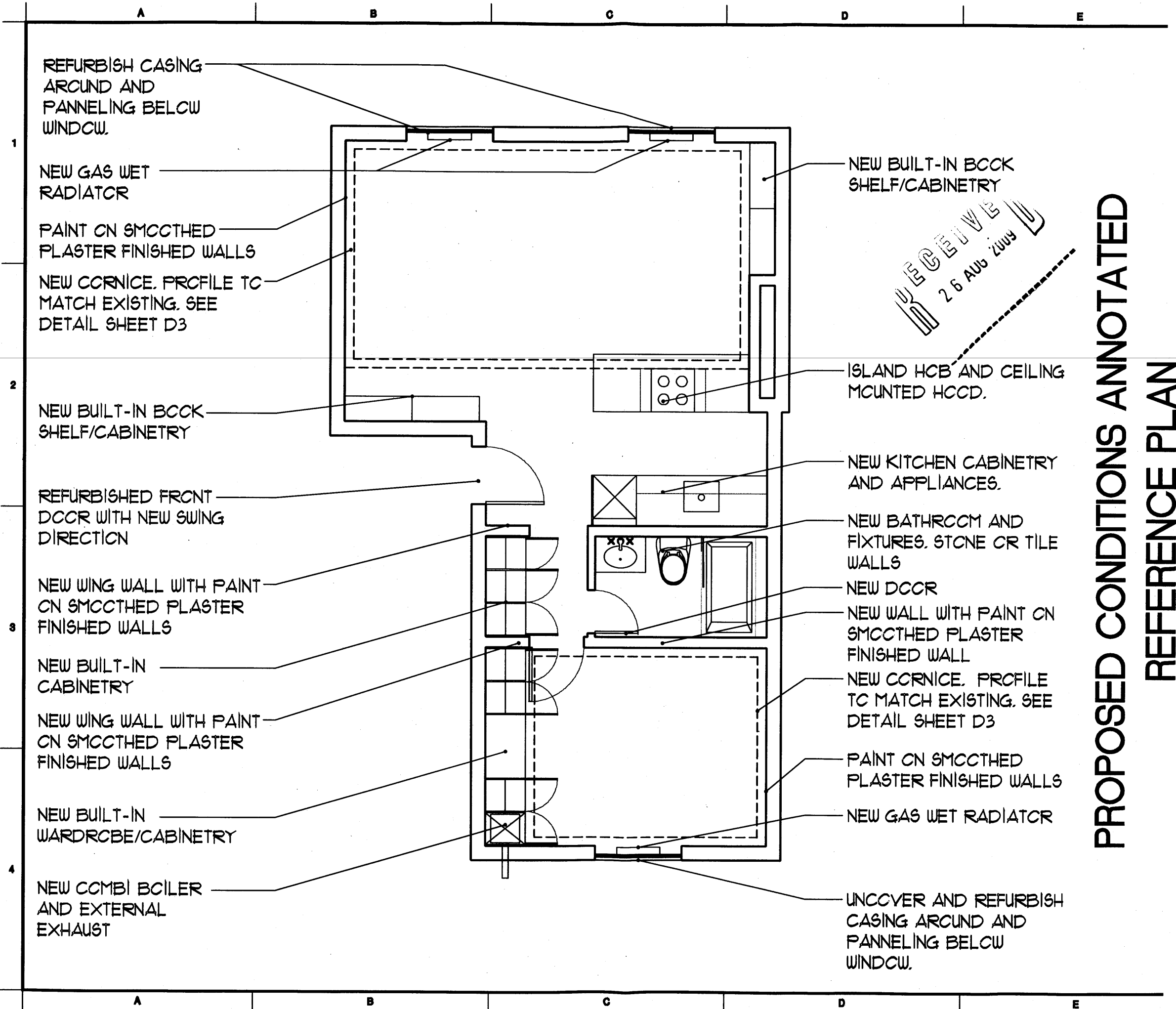
REVISIONS DATE
This drawing is for information only to be used by the architect on a general arrangement of interior conditions. It has been made from available information, however measurements are to be verified on project site. This drawing must be sealed and approved prior to final detailing and fabrication. It is only to be used for the project and its specifically identified parts and is not to be used on any other project. It is to be returned upon request.

APPROVED ADM-NRH
 DRAWN BY NH
 DATE 26 AUGUST 2009
 SCALE 1:50

SHEET No.
**P
 4**
 PROJECT No.
W1T6BE

RECEIVED
 26 AUG 2009

P20CONWAYSTREET.DWG



SECOND FLOOR FLAT
 20 CONWAY STREET
 LONDON W1T 6BE

**PROPOSED CONDITIONS ANNOTATED
 REFERENCE PLAN**

PROPOSED
 ANNOTATED REFERENCE
 PLAN

DRAWING TITLE

REVISIONS DATE

This drawing is for information only to be used by the contractor as a general arrangement of tender conditions. It has been made from available information, however measurements are to be verified on project site. This drawing must be verified and approved prior to final detailing and fabrication. It is only to be used for the project and not to be used on any other project. It is to be returned upon request.

APPROVED ADM-NRH

DRAWN BY NH

DATE 3 AUGUST 2009

SCALE 1:50

SHEET No.
**P
 5**
 PROJECT No.
 W1T6BE