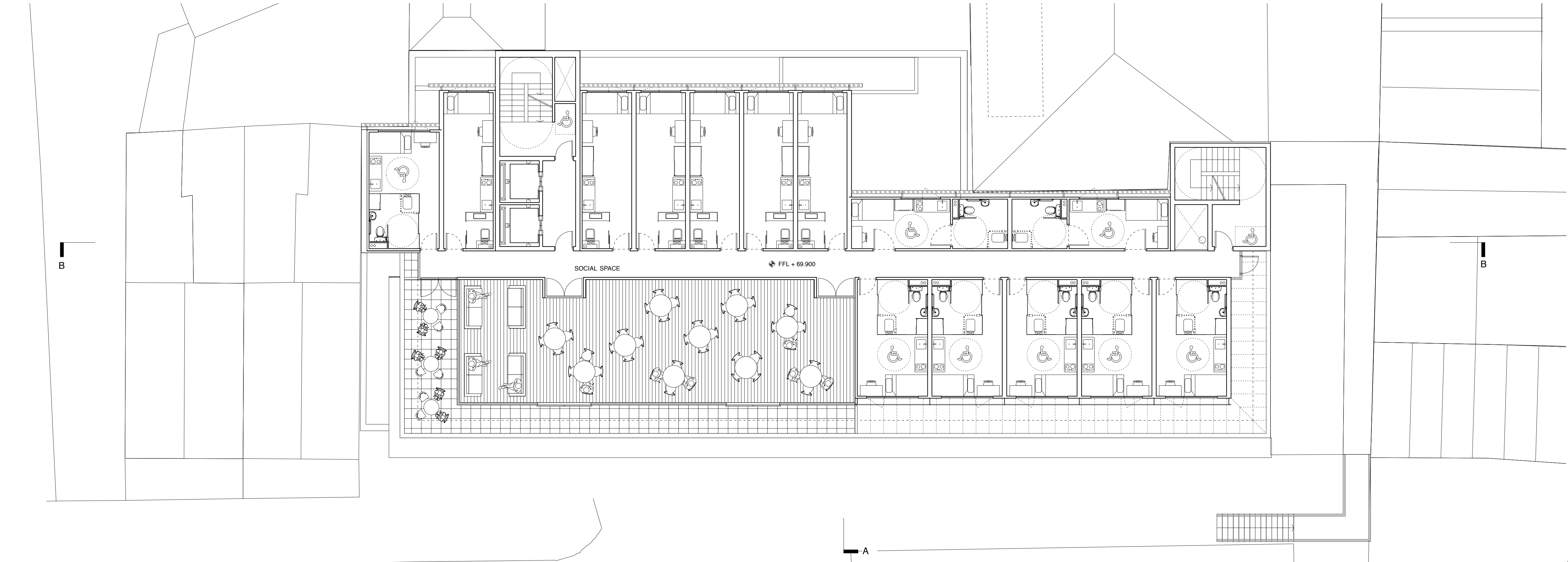


THIRD - SIXTH FLOOR PLAN



SEVENTH FLOOR PLAN

This drawing, the work of architecture to which it relates, and any notes relating to them are protected by copyright. To the extent that this is a design document it is, in addition, protected by design right. All rights in them are reserved. They are provided for your information about the application only. No part of them or any design to which they relate may be reproduced in any form or by any means without the prior written permission of Fairview New Homes Limited, except as expressly permitted by law. The doing of any unauthorised act in relation to them may result in both a civil claim and criminal prosecution.

© john pardey architects

cad file:

Notes

rev	date	initials	description
-----	------	----------	-------------

drawing:
THIRD-SIXTH FLOOR PLAN /
SEVENTH FLOOR PLAN PROPOSED

project:
0710-BELMONT STREET

drawing no:
710-253

status:

PLANNING

scale @ A1/A3:

1:100 / 1:200

date:

JUNE 09

JOHN PARDEY ARCHITECTS

beck farm studio
st leonards road
east end
lymington
hampshire
SO41 5SR

t 01590 626465
f 01590 626547

mail@johnpardeyarchitects.com
www.johnpardeyarchitects.com

JPA Support Ltd. reg in england 449 6655. vat 656 588 581.

PLANNING

