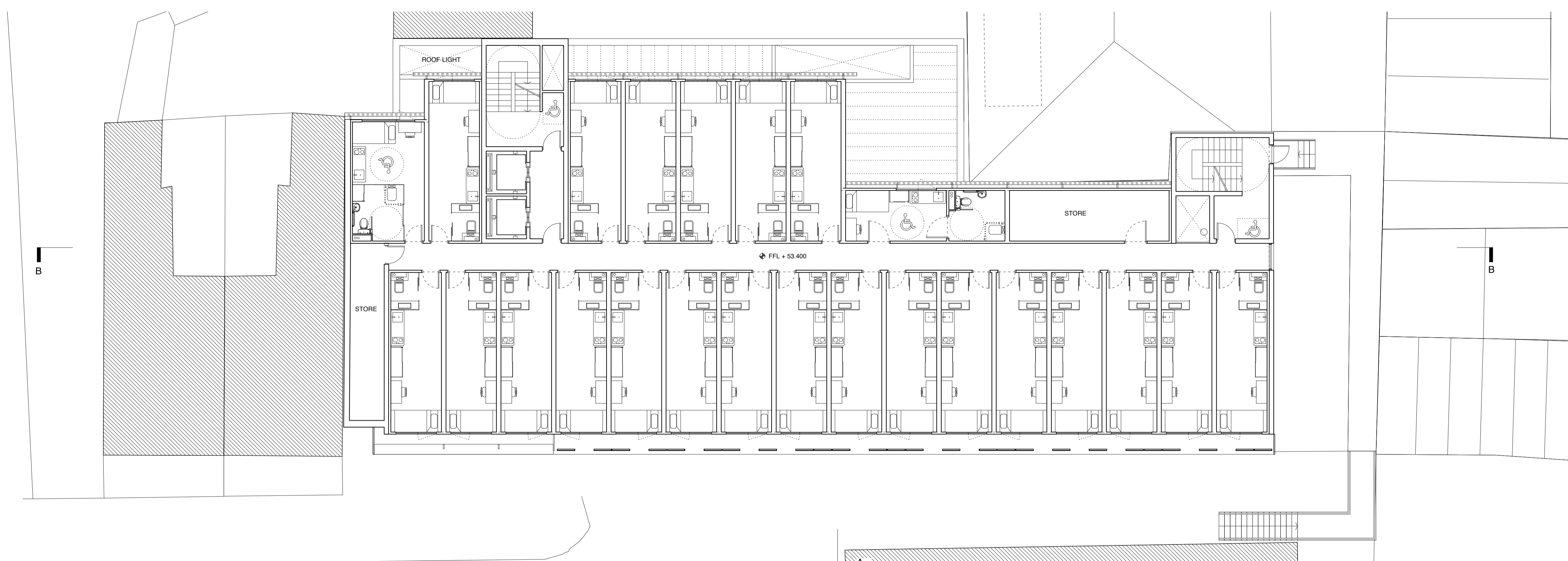


This drawing, the work of architecture to which it relates, and any notes relating to them are protected by copyright. To the extent that this is a design document it is, in addition, protected by design right. All rights in them are reserved. They are provided for your information about the application only. No part of them or any design to which they relate may be reproduced in any form or any means without the prior written permission of Farview New Homes Limited, except as expressly permitted by law. The doing of any unauthorised act in relation to them may result in both a civil claim and criminal prosecution.

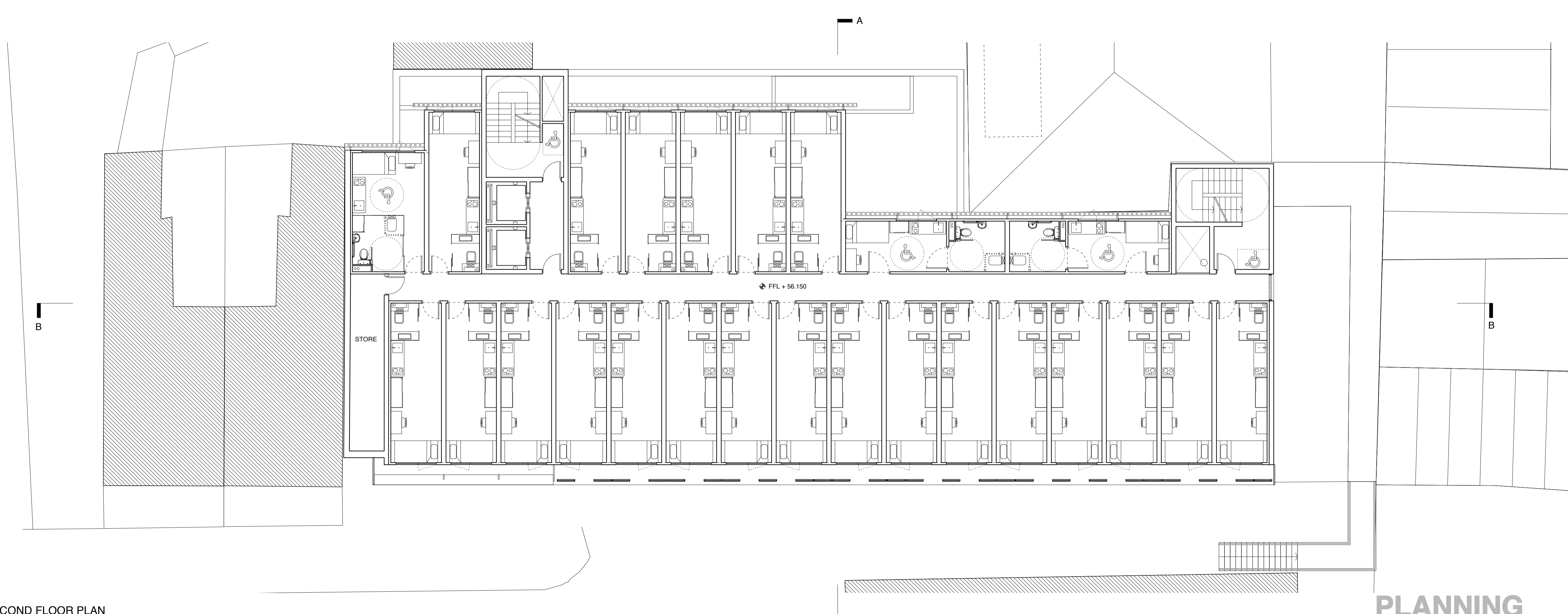
© John Pardey Architects

cad file:

Notes



FIRST FLOOR PLAN



SECOND FLOOR PLAN

rev	date	initials	description

drawing: FIRST FLOOR PLAN / SECOND FLOOR PLAN PROPOSED

project: 0710-BELMONT STREET

drawing no: 710-251 revision:

status: PLANNING

scale @ A1/A3: 1:100 / 1:200 date: JUNE 09

JOHN PARDEY ARCHITECTS

beck farm studio
st leonards road
east end
lymington
hampshire
SO41 6SR

t 01590 626465
f 01590 626547
mail@johnpardeyarchitects.com
www.johnpardeyarchitects.com
JPA Support Ltd. reg in england 449 6555. vat 656 586 581.

PLANNING

