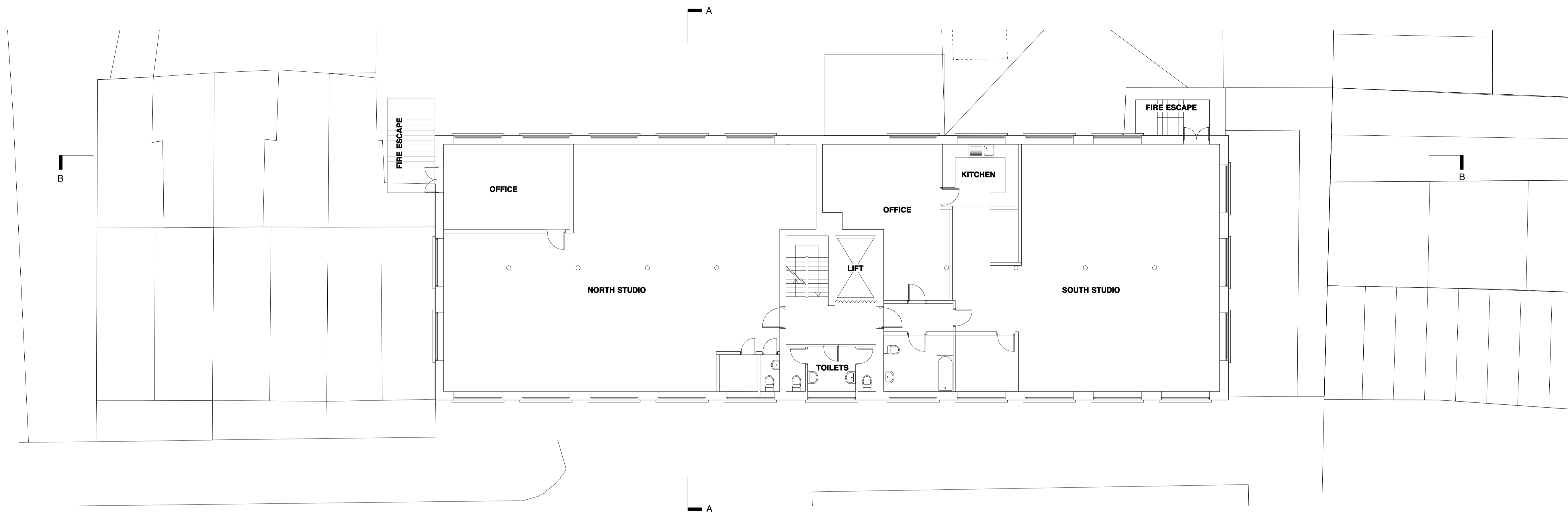


This drawing, the work of architecture to which it relates, and any notes relating to them are protected by copyright. To the extent that this is a design document it is, in addition, protected by design right. All rights in them are reserved. They are provided for your information about the application only. No part of them or any design to which they relate may be reproduced in any form or any means without the prior written permission of Fairview New Homes Limited, except as expressly permitted by law. The doing of any unauthorised act in relation to them may result in both a civil claim and criminal prosecution.

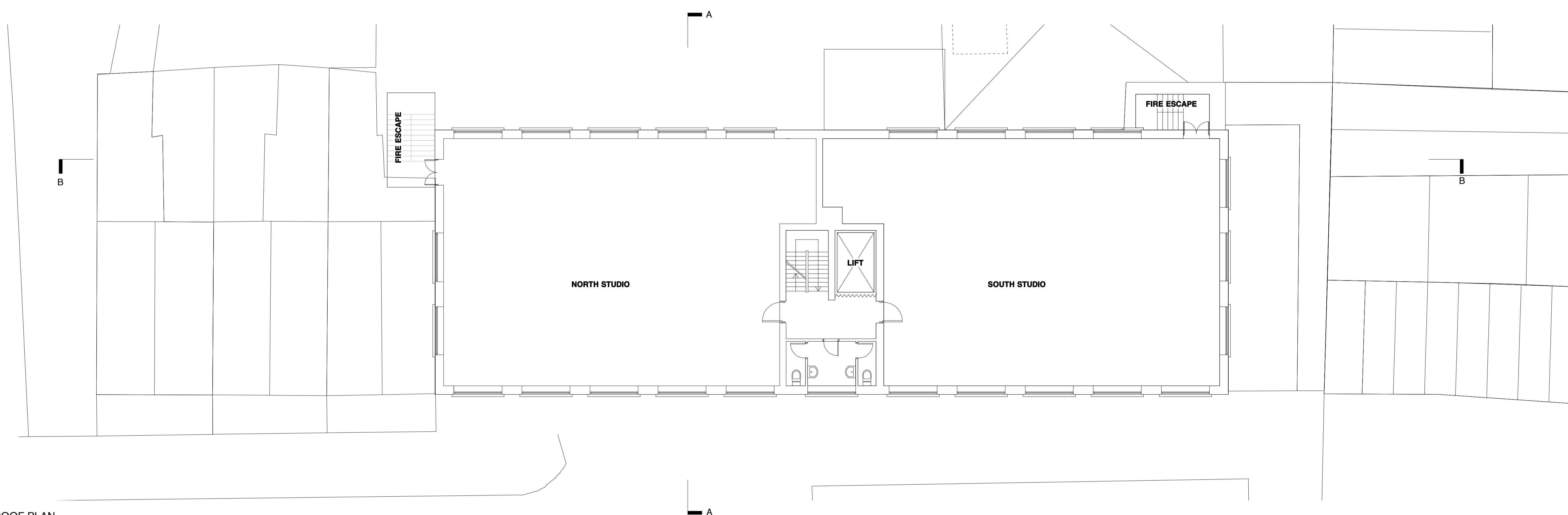
© john pardey architects

cad file

Notes



FORTH FLOOR PLAN



ROOF PLAN

rev	date	initials	description

drawing:
THIRD FLOOR PLAN / FORTH FLOOR PLAN EXISTING
 project:
0710-BELMONT STREET
 drawing no:
710-203
 revision:
 status:
PLANNING
 scale @ A1/A3:
1:100 / 1:200
 date:
JUNE 09

JOHN PARDEY ARCHITECTS

beck farm studio
 st leonards road
 east end
 lynton
 hamshire
 SO41 5BR
 t 01590 626465
 f 01590 626547
 mail@johnpardeyarchitects.com
 www.johnpardeyarchitects.com
 JPA Support Ltd. reg in england 449 6655. vat 656 588 581.

PLANNING

